

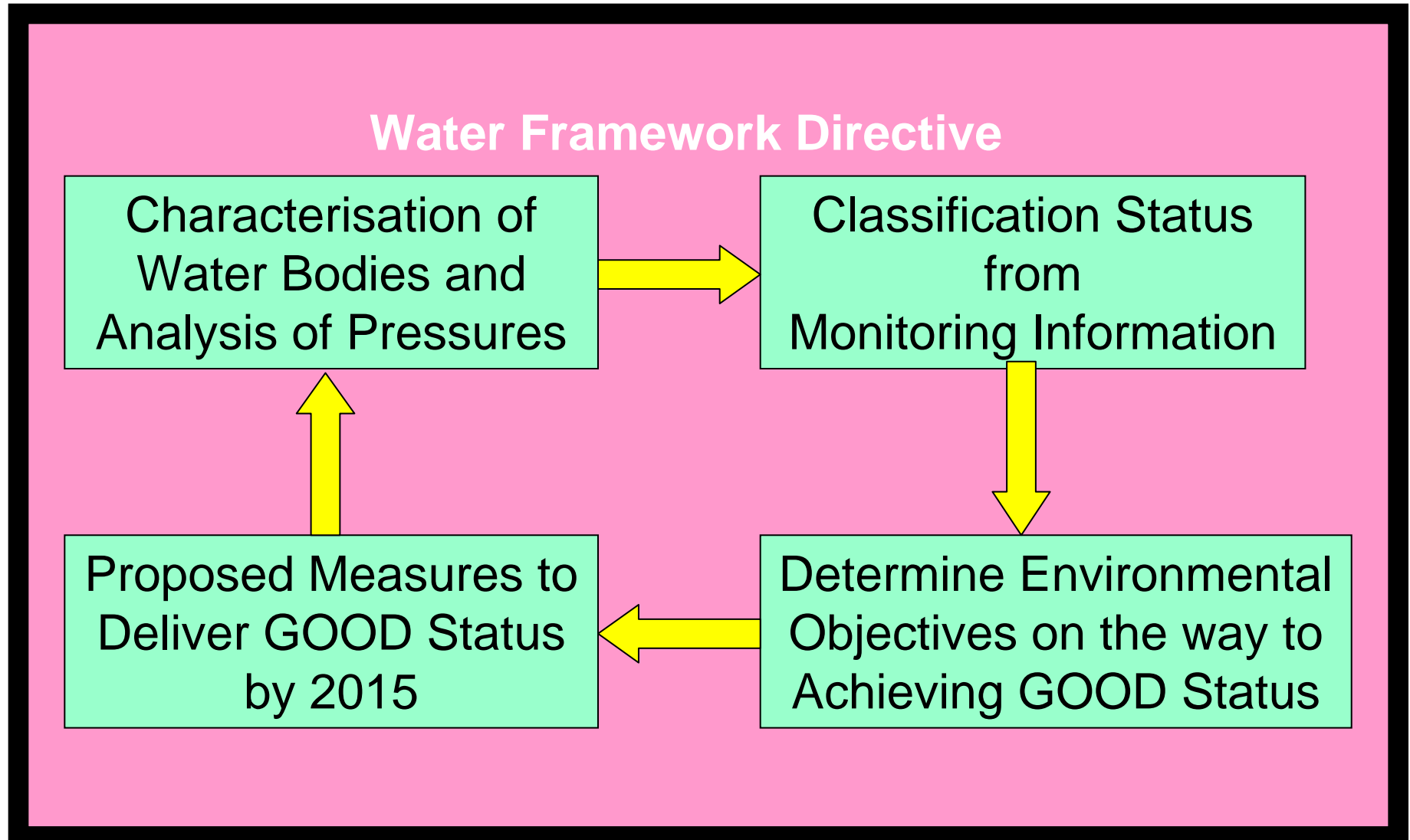
Draft River Basin Plans – Bush, Glens and Larne Lough

Gabriel Nelson – Northern Ireland
Environment Agency

Introduction

- Background of the overall process and how it fits into the logic of the Directive
- Classification Results for Bush and Glens and Larne Lough Area
- What is likely to appear in the draft plans
- What is the time line for the plans
- How people should become involved
- What will happen between the draft and final plans

Water Framework Directive Steps



What is a RBMP?

The plans cover:

groundwater

wetlands

rivers

lochs/lakes/loughs

transitional waters (eg estuaries)

coastal waters

Set out the objectives to be achieved
and the actions required.



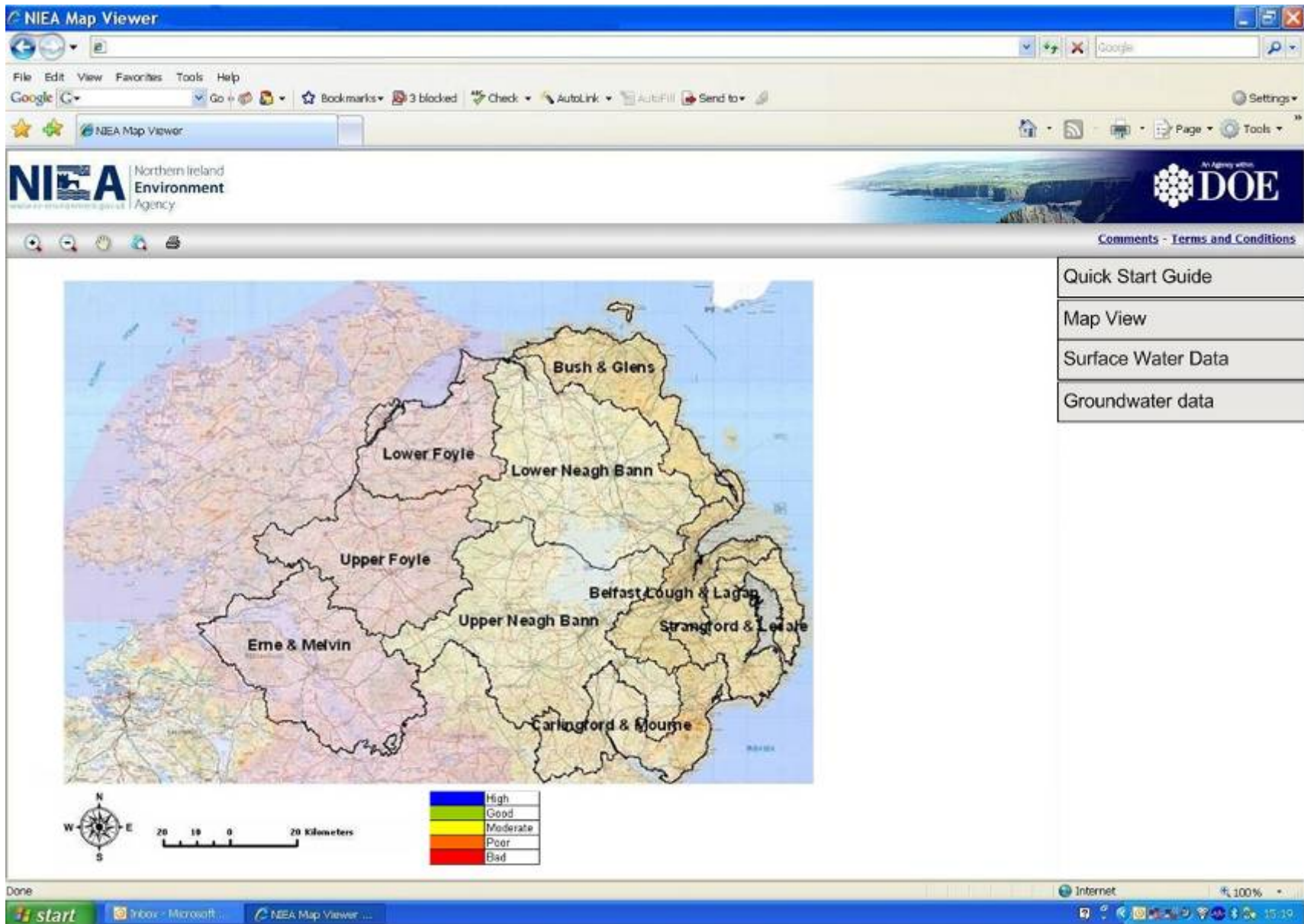
River Basin Districts

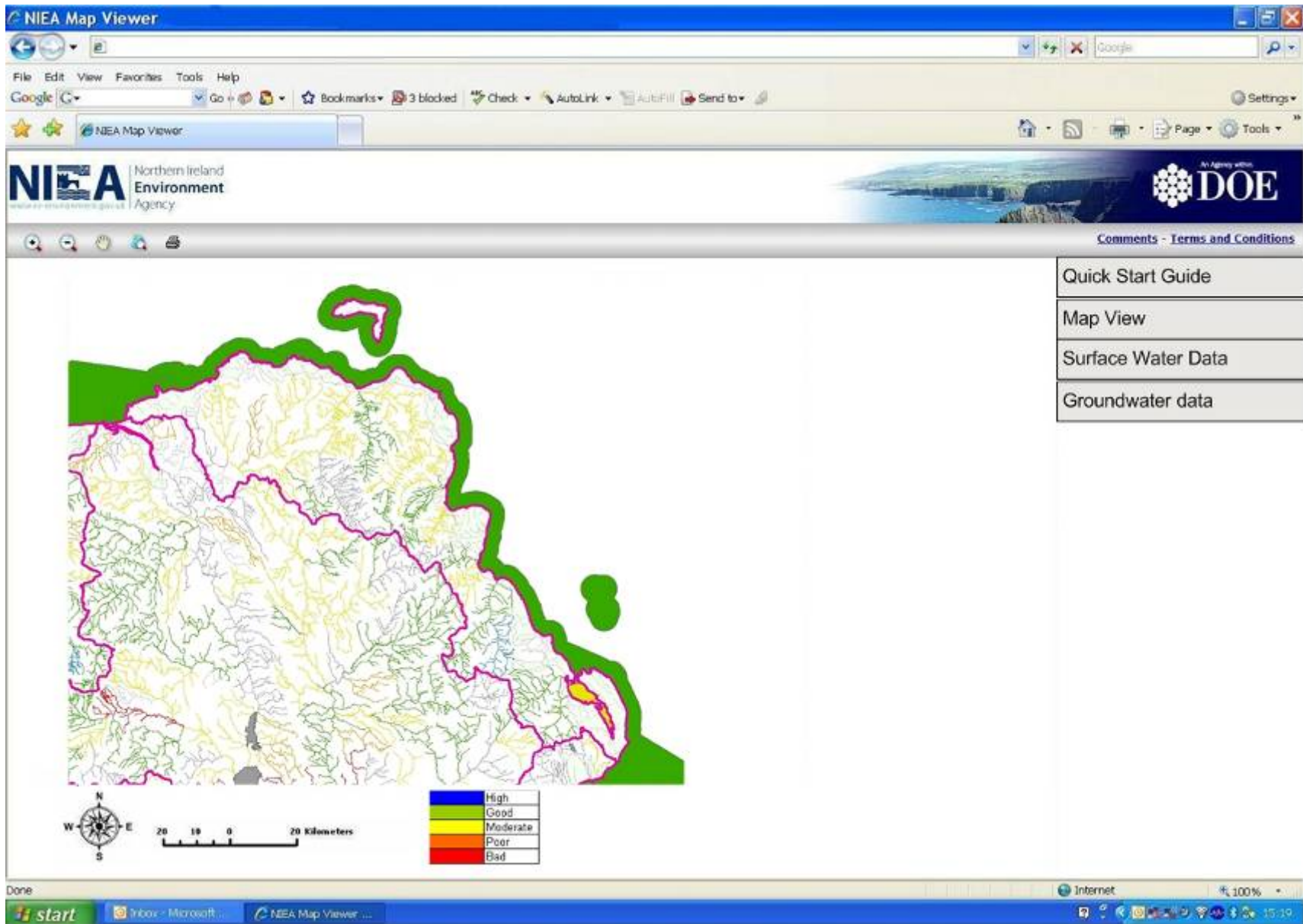
Draft River Basin Management Plans

- 1 Northern Ireland only draft plan
- 3 shared plans with NI & RoI – North Western Neagh Bann and Shannon IRBDs
- Tiered approach – combination of published summary document and technical appendices available on-line
- Will include information on classification status results, objectives and measures

Draft River Basin Management Plans

- Tier 1- NI/RoI Coordination/Summary Statistics for IRBD
- Tier 2 – Summary of draft River Basin Management Plans
- Tier 3- interactive web mapping tool
- Tier 4 – background documents





NIEA Map Viewer

File Edit View Favorites Tools Help

Google Go Bookmarks 3 blocked Check AutoLink AutoFill Send to Settings

NIEA Northern Ireland Environment Agency

An Agency within DOE

Comments - Terms and Conditions

Quick Start Guide

Map View

Surface Water Data

Waterbody name:
Lame River

Classification:
Good

2015 target classification: Good
2021 target classification: Good
2027 target classification: Good
Risk: 1a

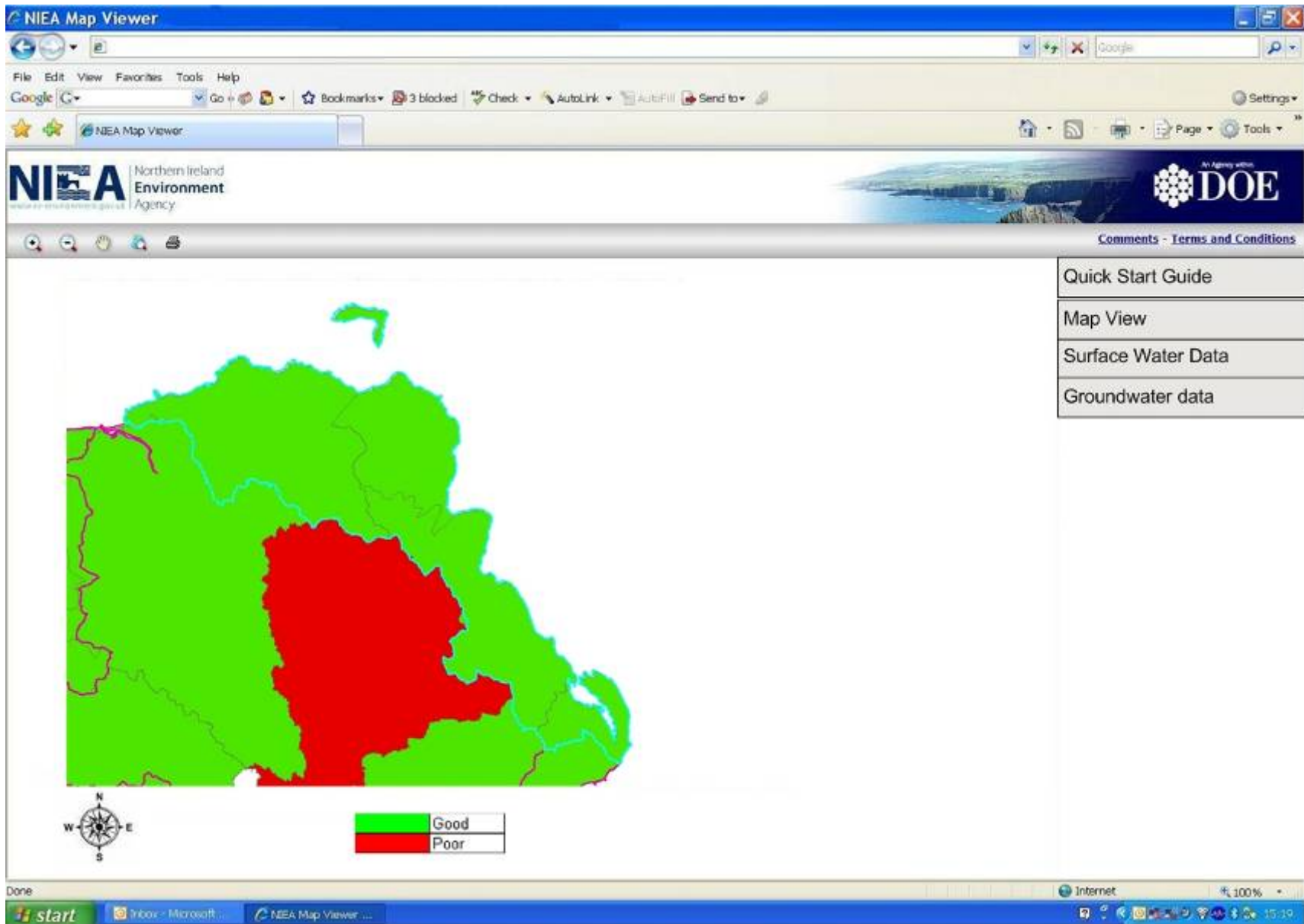
Groundwater data

High
Good
Moderate
Poor
Bad

Done

start | Yahoo - Microsoft | NIEA Map Viewer ...

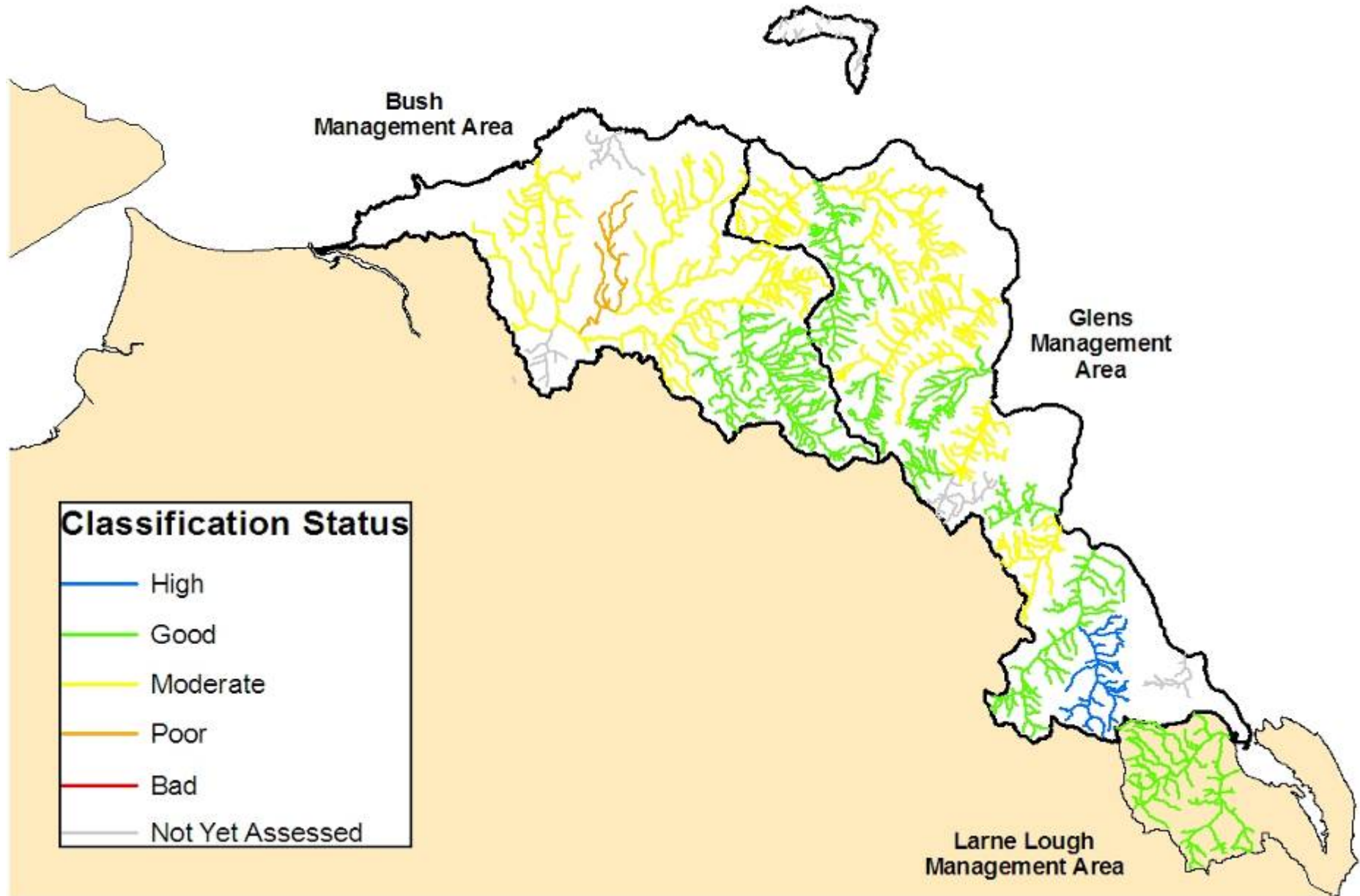
Internet 100% 15:39



Status Classification for Bush and Glens Area

- Rivers
- Coastal waters
- Groundwaters

Summary of River Water Status

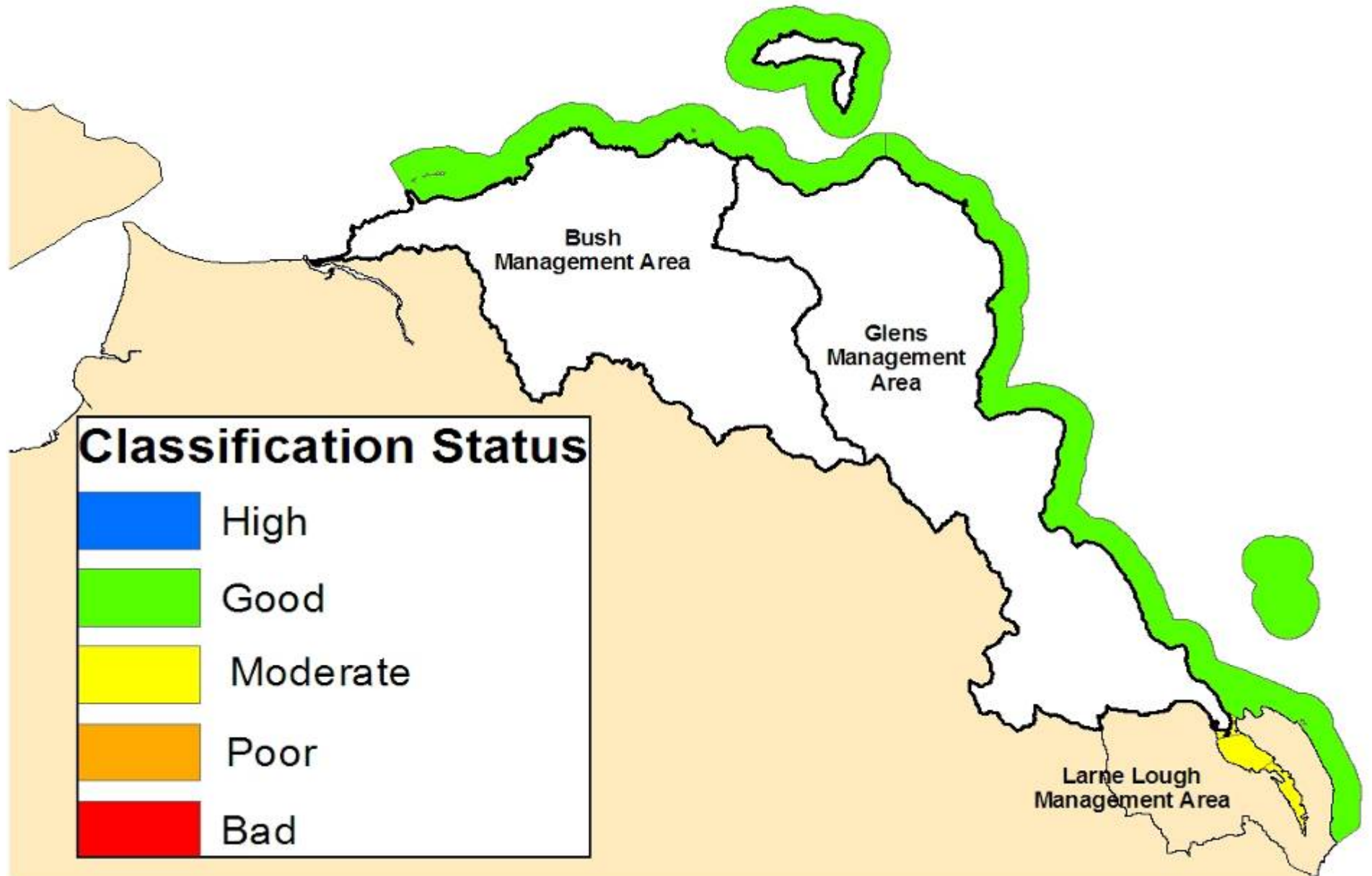


Summary of River Water Body Status

River Status as % of Total River Length for 40 water bodies

Management Area	High	Good	Moderate	Poor	Bad	Not Yet Assessed	% Total
Bush	0	31	56	7	-	6	100
Glens	7	42	45			6	100
Larne Lough		100					100

Summary of Coastal Water Status

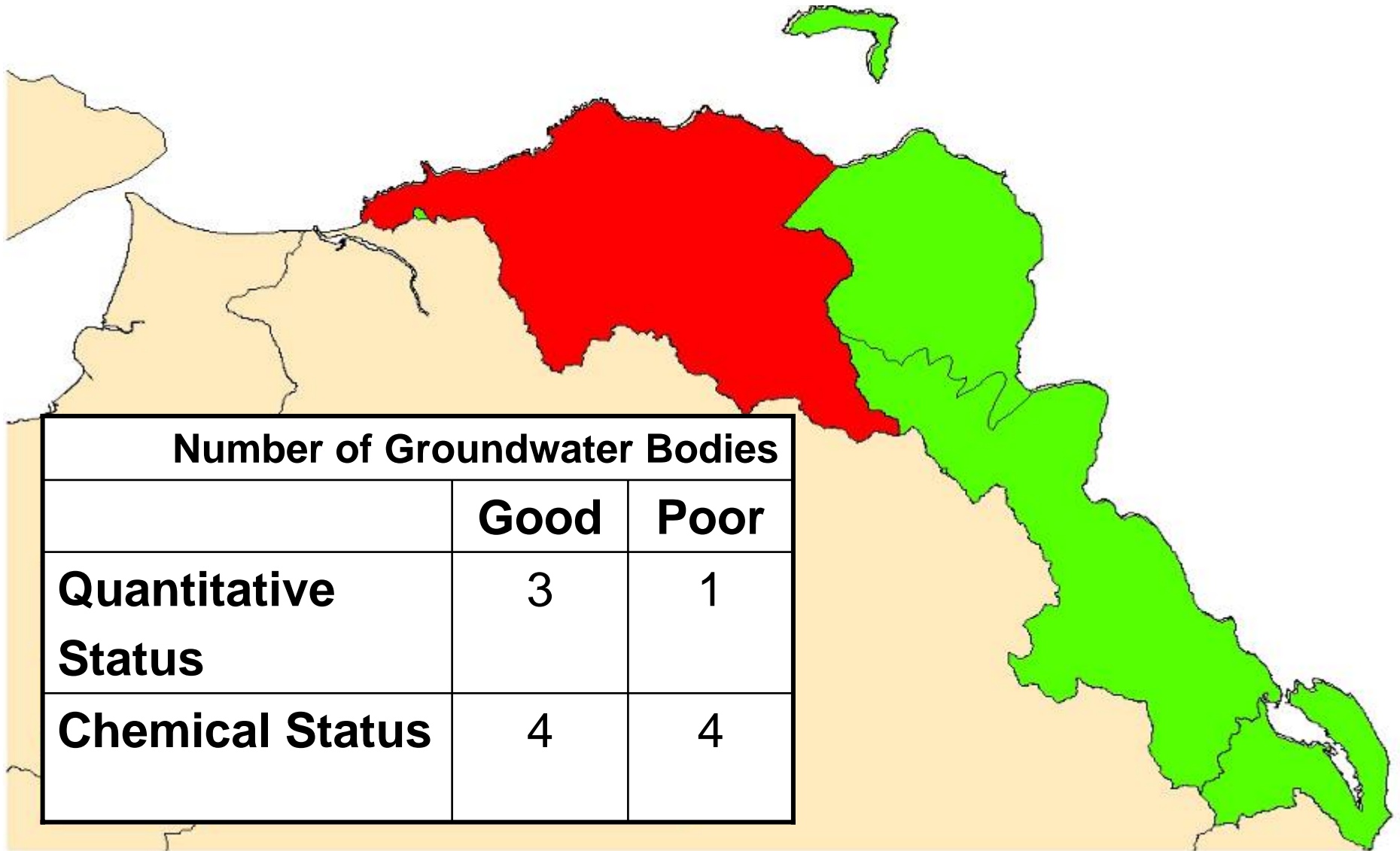


Summary of Coastal Water Status

Coastal Water Status as % of Total Area for 7 water bodies

	High	Good	Moderate	Poor	Bad
North Coast		27.0			
Rathlin		17.1			
North Channel		43.2			
Maiden Islands		9.1			
Larne Lough North			0.4		
Larne Lough Mid			2.0		
Larne Lough South			1.2		

Groundwater Status



Number of Groundwater Bodies		
	Good	Poor
Quantitative Status	3	1
Chemical Status	4	4

Overall status classification for as a % of Total Number of Water Bodies (51)

- 43% good or better**
- 47% not good**
- 10% not yet assessed**

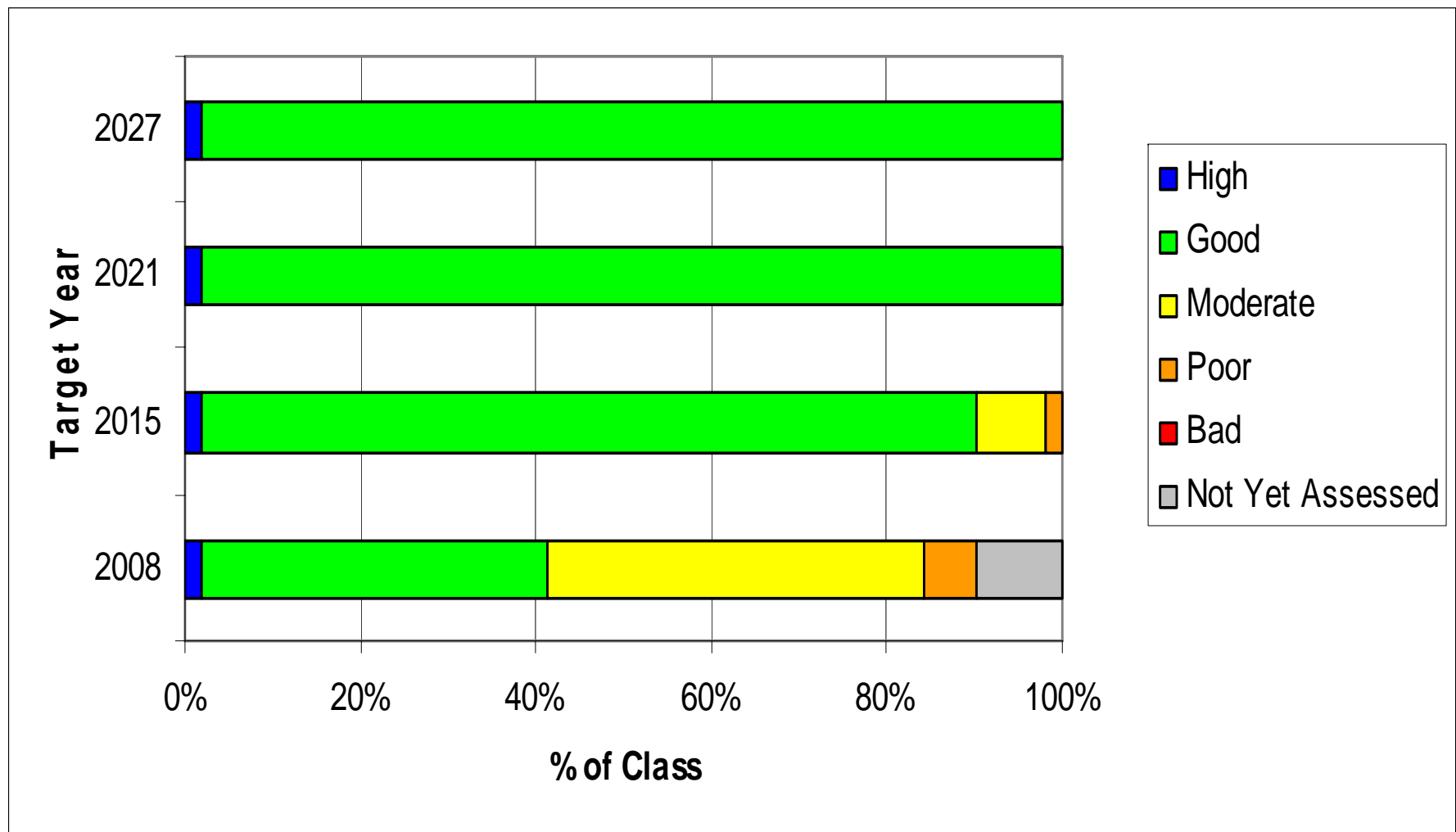
Rules for Objective Setting

- Rule 1: Where a water body is at **moderate** status in **2008** the objective for **2015** is **good** status.
- Rule 2: Where a water body is at **poor** status in **2008** the objective for **2015** is **moderate** status and the objective for **2021** is **good** status.
- Rule 3: Where a water body is at **bad** status in **2008**, the objective for **2015** is moderate status and the objective for **2021** is **good** status

SUMMARY OF OBJECTIVES FOR BUSH, GLENS and LARNE LOUGH AS % OF ALL WBs

STATUS	2008	2015	2021	2027
High	2	2	2	2
Good	39	88	98	98
Moderate	43	8	0	0
Poor	6	2	0	0
Bad	0	0	0	0
Not yet assessed	10	0	0	0
Totals	100%	100%	100%	100%

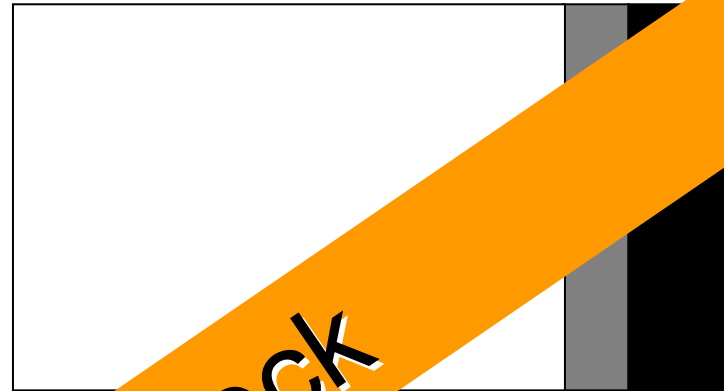
Objectives for Bush, Glens and Larne Lough



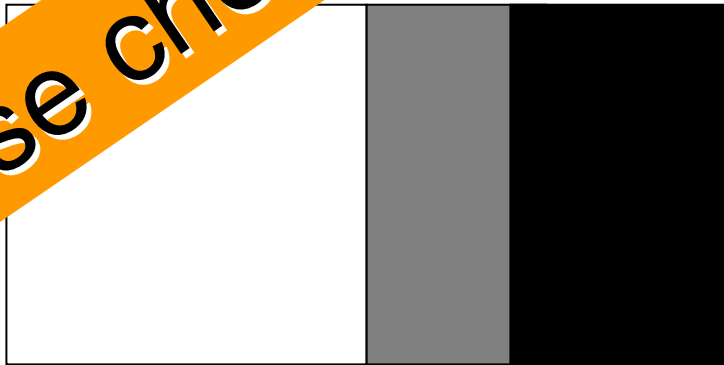
Programme of Measures

Break down the problem

Water quality



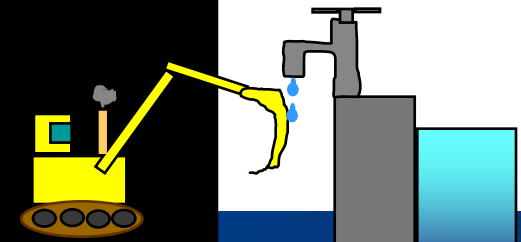
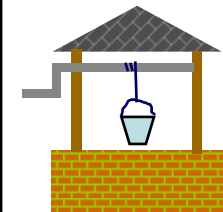
Water resources



Biological



Sense check



Work out what improvements will be delivered by existing measures – before spending time on exemptions

Process of filling the gap between current status and target status for each pressure/status component

- Target Status

Measures that may happen as a result of the River Basin District Planning process

Measures and trends that will happen

- Current Status

**Pre-WFD national and EU
measures**

**UWWTD; Habitats Directive;
CAP; etc**

Existing local initiatives

**Fisheries management projects;
etc**

Pressures

- Point Source Pollution
- Diffuse Source Pollution
- Chemical pollution
- Water resources
- Physical modifications

Programme of Measures

Two scenarios for measures:

- actions funded/legislation in place and timetabled – 2008/11 – Programme for Government
- actions not funded/new legislation – 2011/14 – Programme for Government

Types of Measures

- Point Source – 2007 – 2010 NIW Capital Investment Programme
- 2010 -2012 and 2012 – 2017 Capital Investment Programme
- Review polluting impact of septic tanks and develop best practice guidance

Types of Measures

- Low/zero phosphorus (P) detergents
- Improved education and awareness campaigns
- Targeted advisory visits and inspections
- Develop Catchment models
- Further investigate sources and options for further removal of P from point discharges and diffuse sources

Types of Measures

- Working with Sector Groups to develop and promote Good Practice Guidance
- Promotion and adoption of Sustainable Urban Drainage Systems
- Upgrade fish passes/river restoration programme

Timeline

Dec 2008	Publish draft RBMP for 6 month consultation
Dec 2009	Publish 1st RBMP
Dec 2010	Pricing policies for cost recovery of water services
Dec 2012	Programme of measures operational
Dec 2013	Prepare for 2nd RBMP
Dec 2015	Achieve Environmental Objectives – 1st RBMP

HOW TO GET INVOLVED

- In Northern Ireland – Stakeholder Forum/ 9 Catchment Stakeholder Groups
- News paper adverts and wide distribution of Tier 2 hardcopy
- Web – www.ni-environment.gov.uk/wfd
- Launch in Jan 09
- Next round of CSG meetings - proposed series of information days– Feb/Mar/Apr 09

From Draft to Final

- Public consultation on draft plans – December 2008 to June 2009
- Status classification results updated – new tools still under development and trialling
- Objectives updated
- Consultation responses considered
- Programmes of measures:
 - some better targeted
 - scenarios confirmed

THANK YOU

Our aim is to protect, conserve
and promote our natural and built
environment for the benefit of
present and future generations.

