

# Draft River Basin Plans

Belfast Lough & Lagan

Catchment Stakeholder Group

Bridgeen Magorrian – NIEA

# Overview

- Brief overview of the river basin planning process
- Dealing with the consultation questions

# Water Framework Directive Steps

Classification Status

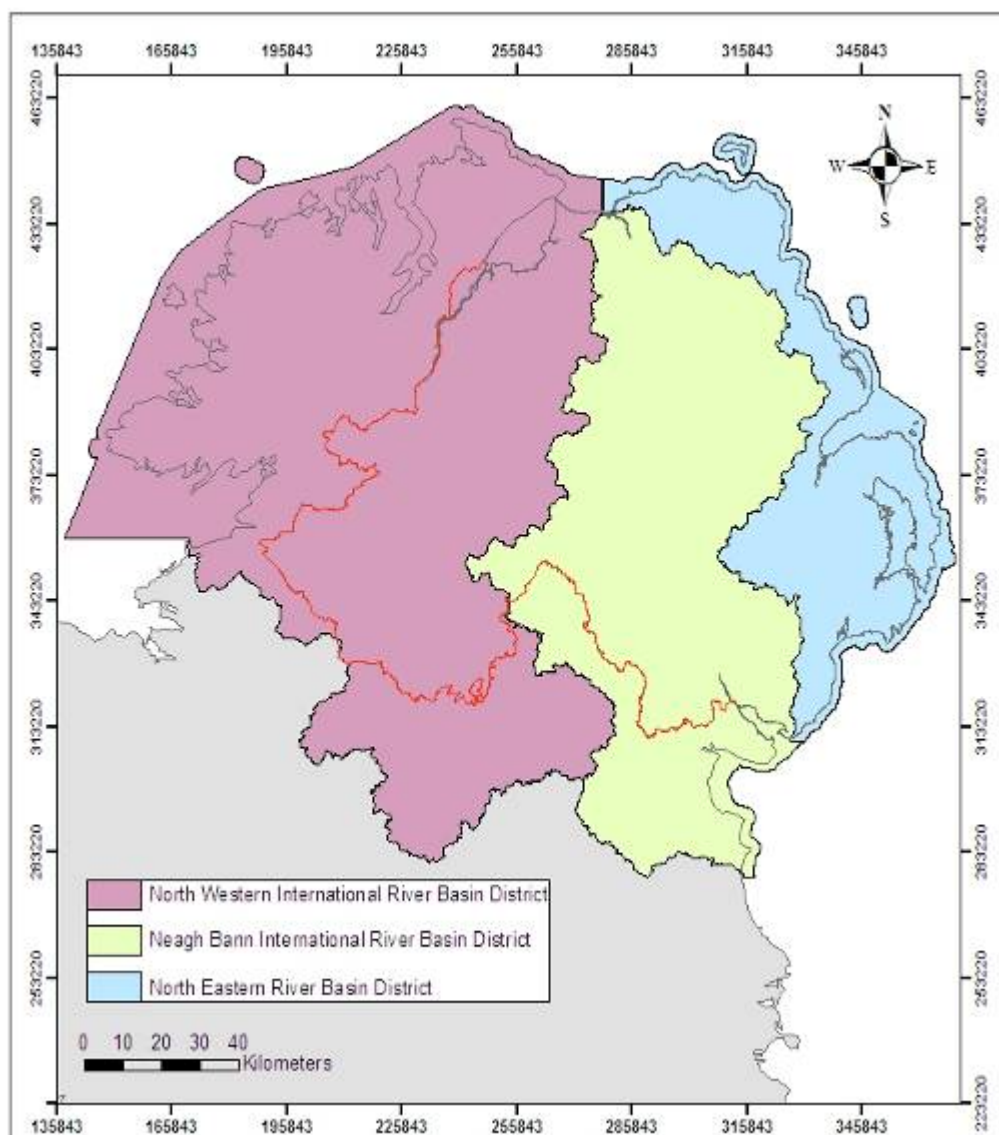


Environmental Objective  
to achieving GOOD status



Proposed Measures to  
deliver GOOD status by  
2015 or later

# Northern Ireland River Basin Districts

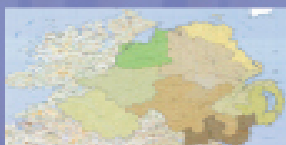




Draft River Basin Management Plan



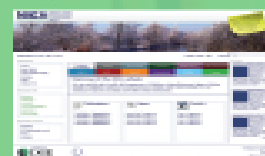
Interactive web map



Draft River Basin  
Management Plan



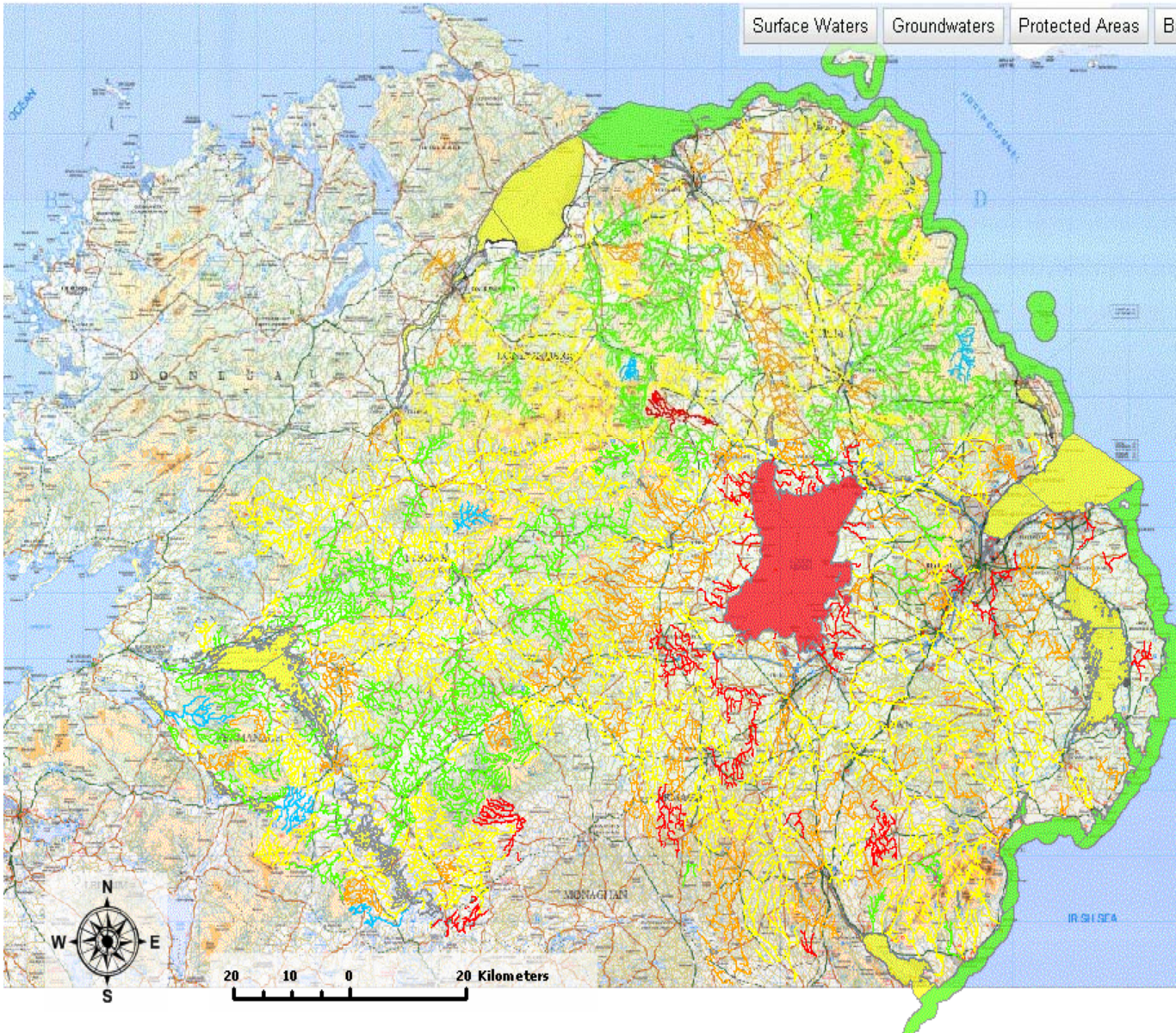
[www.ni-environment.gov.uk/wfd](http://www.ni-environment.gov.uk/wfd)



Managing our shared waters  
Working Together




[Feedback - Terms and Conditions](#)



**Quick start guide**

**Quick Start Guide** to view information about Northern Ireland's water environment based on mapping provided by Land Property Services.

- **Identified on your map**  lists the water environment information you have selected using the identify tool.
- **Water environment** lists information about water bodies that can be displayed on your map. Click on the water droplet icon to switch information on/off.
- **Address search** enables you to search and zoom to specific locations.
- **Glossary** explains the terms used in relation to our water environment.
- **Print the current map** lets you copy the map to an A4 .pdf file.

**I want to:**

- [Add / Remove Water information on the map](#)
- [Search for a location on the map](#)
- [View Water information on the current map](#)

Identified on your map

Water environment

Address Search

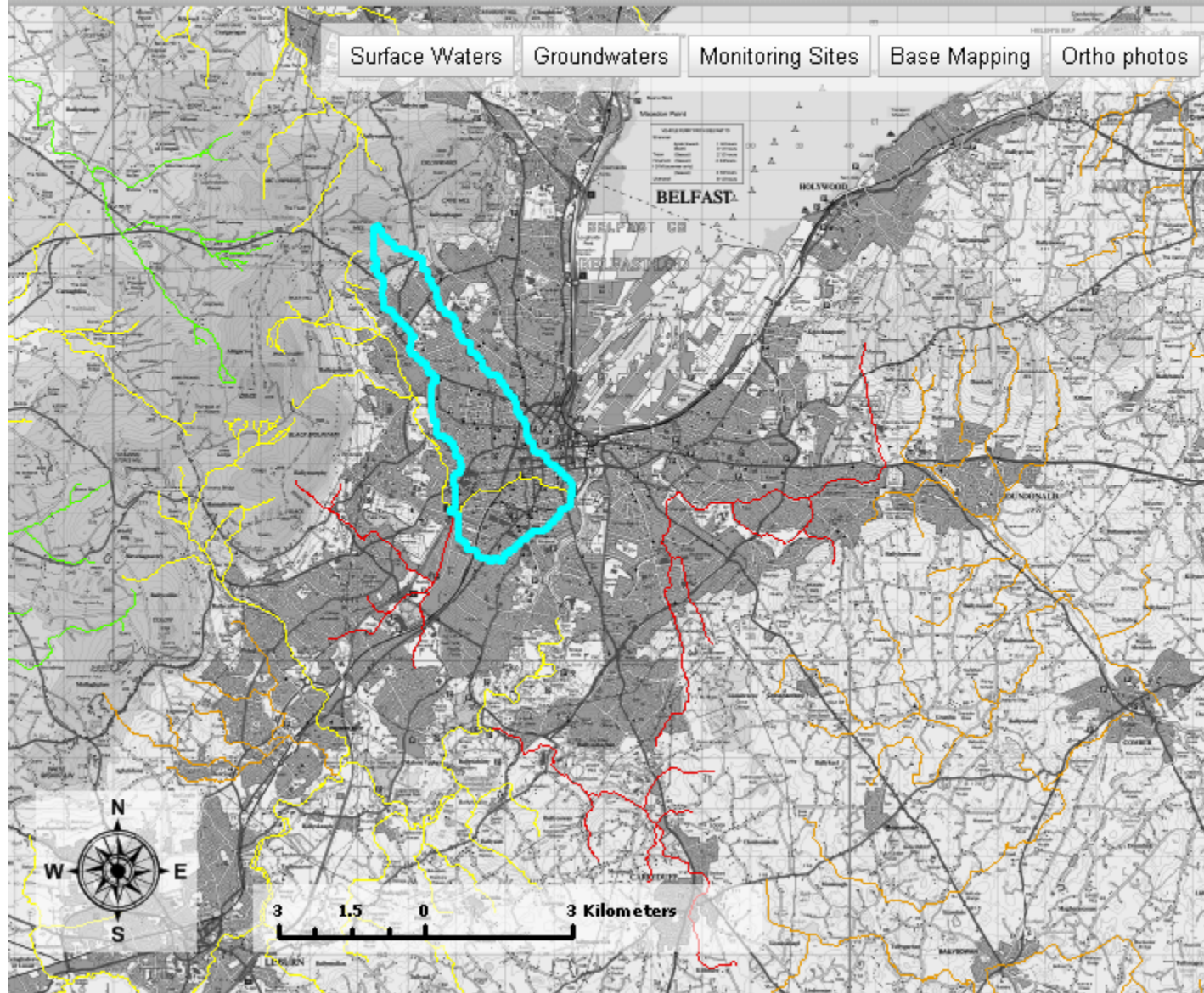
Glossary

Print the Current Map



Map navigation icons: zoom in (+), zoom out (-), pan (hand), globe, print, info (i), and a 'Select Scale' dropdown menu.

[NIEA WFD Webpage](#) - [Tips & Support](#) - [Feedback](#) - [Terms and Conditions](#)



Surface Waters   Groundwaters   Monitoring Sites   Base Mapping   Ortho photos

Quick start guide  
Find on your map

**Identified on your map**

**Surface Waters**

**Rivers**

**Name:** Blackstaff River  
**Status:** MODERATE  
**Measure:** [Click here](#)  
**Waterbody ID:** GBNI1NE050503002  
**Objective 2015:** MODERATE  
**Objective 2021:** GOOD  
**Objective 2027:** GOOD  
**Comments:** The status is moderate due to ammonia, biochemical oxygen demand, dissolved oxygen, soluble reactive phosphate.

[Full Glossary of Terms](#)

[Clear Results](#)

**I want to:**

- [Find a location on the map](#)
- [Add / Remove Water information on the map](#)
- [View Water information on the current map](#)

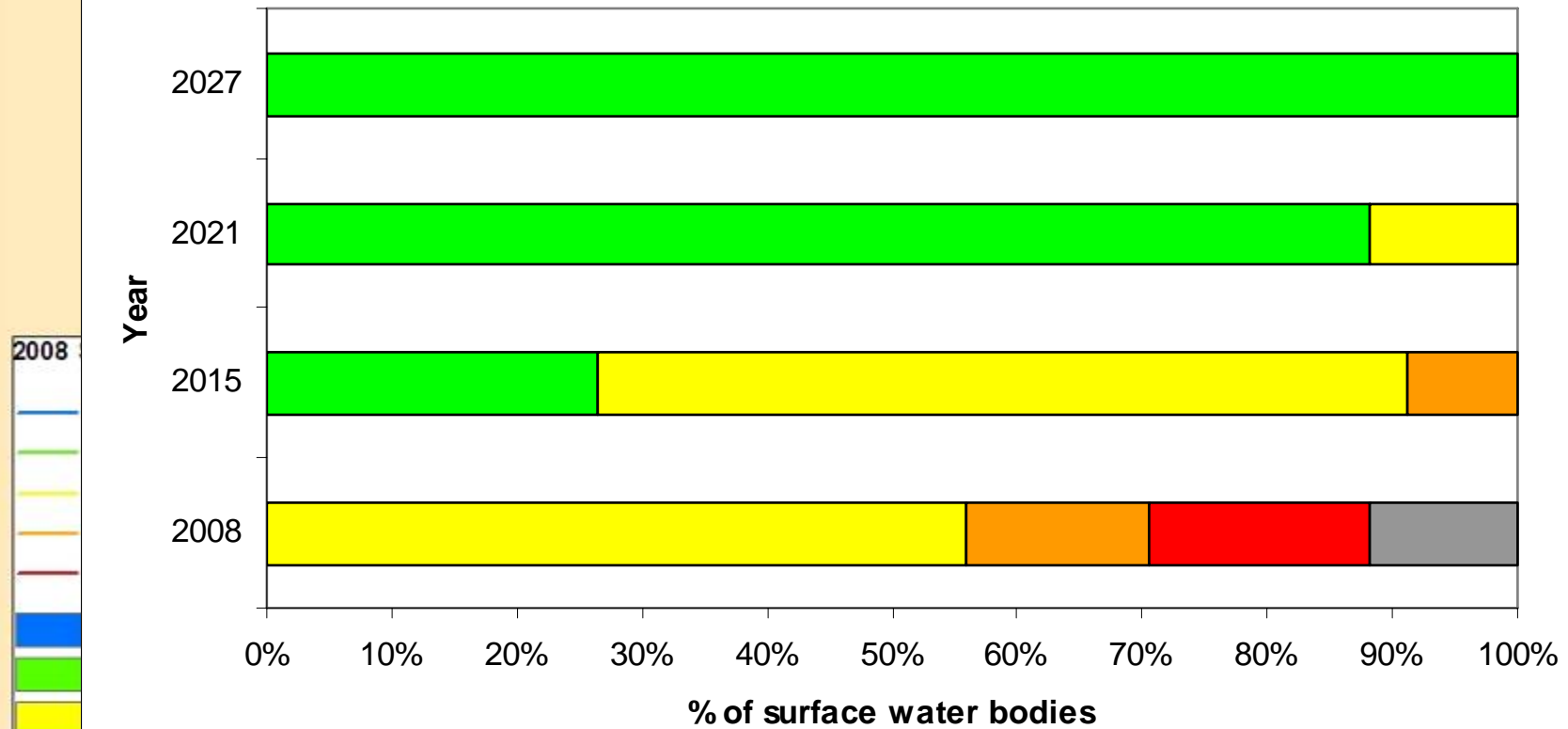
Water environment  
Glossary  
Print the Current Map

# Belfast Lough and Lagan

2008 Status

## Current Status and Proposed Objectives for Surface Water Bodies

■ High ■ Good ■ Moderate ■ Poor ■ Bad ■ Not Yet Assessed



2008

Year

2027

2021

2015

2008

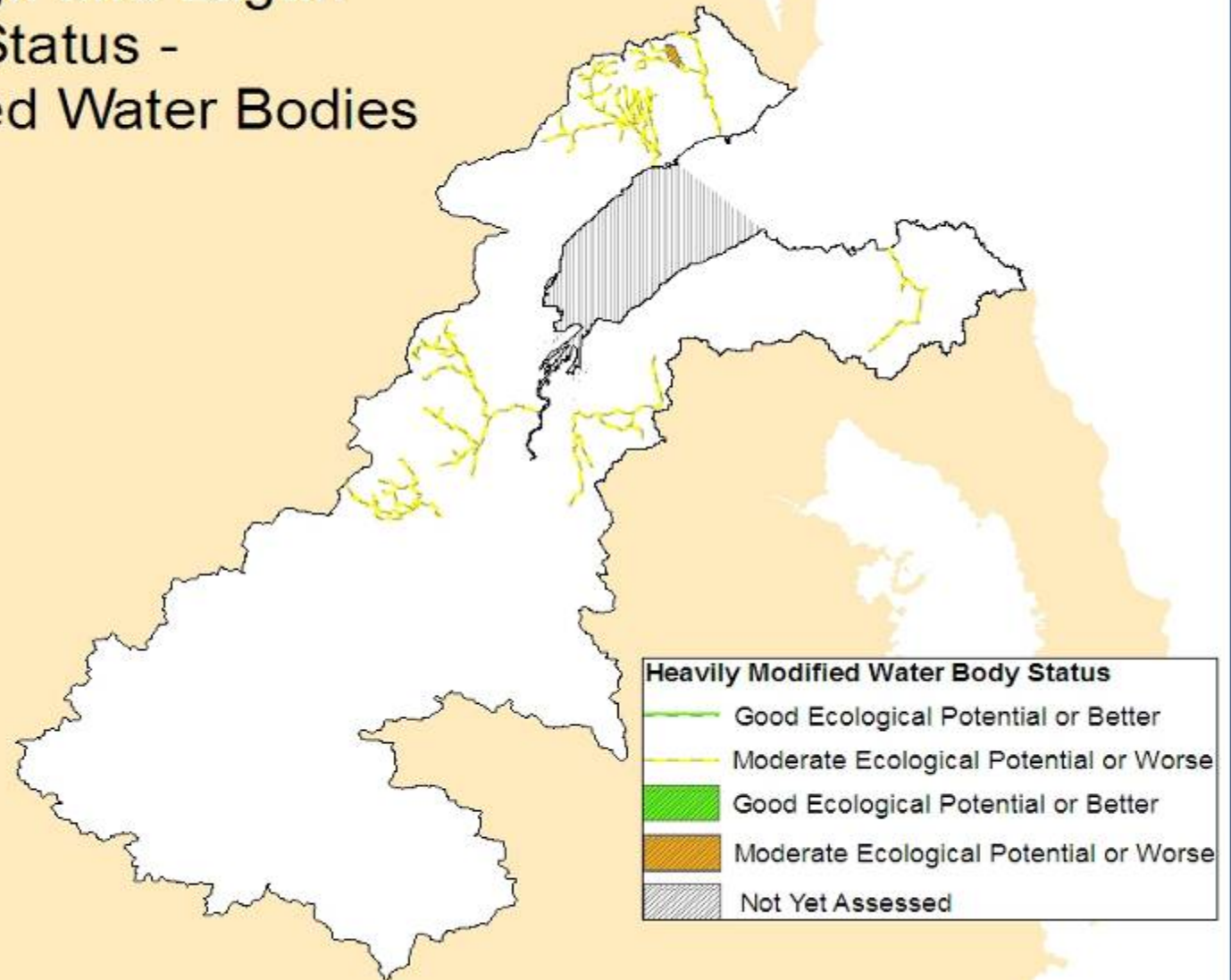
0% 10% 20% 30% 40% 50% 60% 70% 80% 90% 100%

% of surface water bodies

BAD

NOT YET ASSESSED

# Belfast Lough and Lagan 2008 Status - Heavily Modified Water Bodies



## Groundwater Status

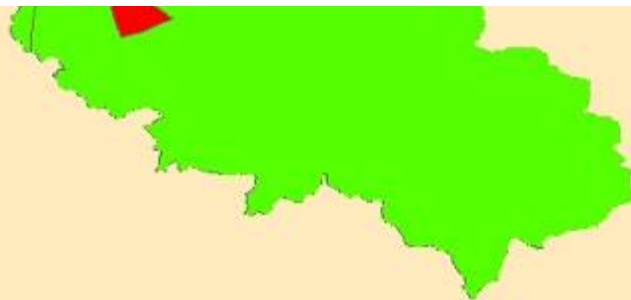


### Summary of Groundwater Status

3 groundwater bodies – good status

1 groundwater body – poor status

**OBJECTIVE: All good status by 2027**



**Problems**

Water body currently less than GOOD status

What causes the environmental impact

**Potential Solutions**

What actions are we already taking

Will current measures achieve GOOD status

Protected Areas

What further actions measures can we take

**Appraise Solutions**

Are proposed measures feasible and affordable

Predict effectiveness of funded justified measures

Alternative Objective

# Programme of Measures

Two scenarios for measures:

- actions funded / legislation in place and timetabled - Programme for Government, 2008-11
- actions not funded/new legislation - Programme for Government, 2011-14

# Supplementary Measures

- Low/zero phosphorus (P) detergents
- Improved education and awareness campaigns
- Targeted advisory visits and inspections
- Develop Catchment models
- Further investigate sources and options for further removal of P from point discharges and diffuse sources

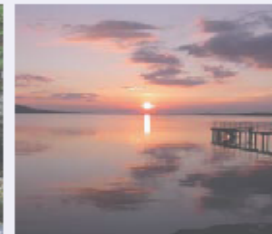
# Water Information Days

open to the public and FREE of charge - an opportunity to:

- Speak with NIEA staff about draft River Basin Plan proposals to improve the water environment - let us know about any community run initiatives that you are involved in that may help;
- Search our new interactive web map to find out more about your local river, lake, coastal waters and groundwater;
- Identify insects and see how they can be used as indicators of water pollution;
- Collect factsheets on local water management, which could be utilised in the classroom for those teachers delivering 'Physical Process' at GCSE or 'Environment and Society' at Key Stage 3.

Venue	Date	Time
<b>Crawfordsburn Country Park</b> Bridge Road South, Helen's Bay, Co.Down, BT19 1JT	25 March 2009	2-8pm
<b>Ecos Centre</b> Broughshane Road, Ballymena, Co.Antrim, BT43 7QA	1 April 2009	2-8pm
<b>Loughs Agency</b> 22 Victoria Road, Londonderry, Co.Londonderry, BT47 2AB	8 April 2009	2-8pm
<b>The Coastal Zone</b> 8 Bath Road, Portrush, Co.Antrim, BT56 8AP	22 April 2009	2-8pm
<b>Castle Archdale Country Park</b> Irvinestown, Co.Fermanagh, BT94 1PP	29 April 2009	2-8pm
<b>Peatlands Park</b> 33 Derryhubbert Road, Dungannon, Co.Tyrone, BT71 6NW	6 May 2009	2-8pm

Check our website [www.ni-environment.gov.uk/wfd](http://www.ni-environment.gov.uk/wfd) or phone (028) 9262 3100 for further information.



An Agency within the Department of the  
Environment  
[www.doe.ni.gov.uk](http://www.doe.ni.gov.uk)



**NIEA** Northern Ireland  
Environment  
Agency  
[www.ni-environment.gov.uk](http://www.ni-environment.gov.uk)

**NIEA** Northern Ireland  
Environment  
Agency  
[www.ni-environment.gov.uk](http://www.ni-environment.gov.uk)





# Breakout Sessions

- Breakout groups 1,2,3...
- ~10 mins on each consultation question
- Groups facilitated by CSG chair, catchment officer & presenter
- Nominated scribe & rapporteur
- Rapporteur to give brief feedback from each breakout group
- Feedback used as part of the public consultation [22 Dec 08 to 22 Jun 09] to help us revise our proposals for publishing first River Basin Management Plan in Dec 09.

Our aim is to protect, conserve  
and promote our natural and built  
environment for the benefit of  
present and future generations.



## Current Status and Proposed Objectives for Heavily Modified Water Bodies

■ Good Ecological Potential or Better ■ Moderate Ecological Potential or Worse ■ Not Yet Assessed

