

Pollution Incident Response

Belfast Lough and Lagan Catchment Stakeholder Group

David Miller

Senior Water Quality Inspector

Pollution incidents

24 Hour response service

- Medium and High severity incidents within four hours
- All other incidents within 24 hours
- Tends to be linked to point sources of pollution
- Approximately 150 confirmed pollution incidents since 1 April 2007 within this Catchment area



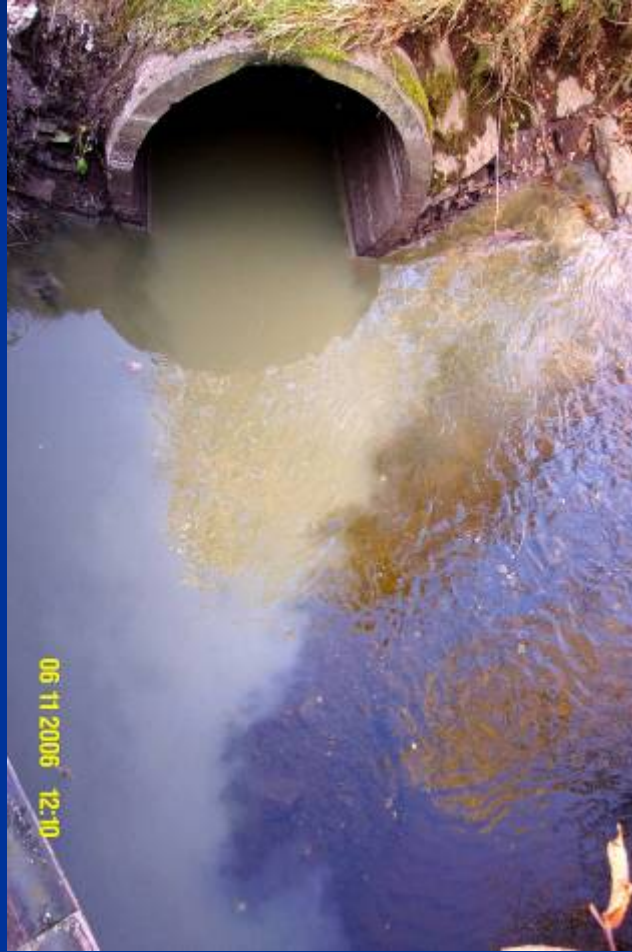
Incident Response

- Confirm Pollution/Grade severity
- Identify Source
- Stop the polluting discharge as soon as possible
- Collect evidence
- Arrange clean up with a view to cost recovery
- Report to WMU and complete PILOTS report

Pollution Categories

- Sewage – big and small
- Oils – Diesel, Kerosene, Lubricants etc.
- Suspended solids – “dirt”
- Farm Effluent – Silage, slurry, general waste
- Chemicals – Detergents, pesticides, acids etc.
- Others

Sewage



Public Infrastructure



Private sewage systems



Septic Tanks



Oil



From spills.....



And leaks



Domestic spills



And clean up afterwards



Quarry/Earthworks



Including building sites



Agriculture



Leading to.....



And this.



Chemicals



Transport etc.



And resultant spillages.....



“Other” Sources



And the odd mishap



Further action

- Clean up with costs recovered
- Drafting of warning letters
- Preparation of prosecution files
- Court appearances

Ongoing Projects

- Belfast culvert project
- Connswater River
- Cross Connections

Any questions?

