

An aerial photograph showing a river meandering through a landscape of agricultural fields. The fields are in various stages of growth or harvest, with colors ranging from vibrant green to golden-brown. The river is dark and winds through the center of the image, creating several loops and bends. The overall scene is a typical rural landscape.

River Bush Habitat Restoration Project

Dr. Gareth Greer

Conservation Officer, Rivers Agency

An aerial photograph of a rural landscape. A winding river flows through the center, surrounded by green fields and some brown, harvested areas. The fields are divided by thin lines, likely fences or roads. The overall scene is a mix of natural and agricultural elements.

Presentation overview

- Background to project
- What was done
- How will we judge success?

Background - How did the river get to its current state?

- Habitat modification



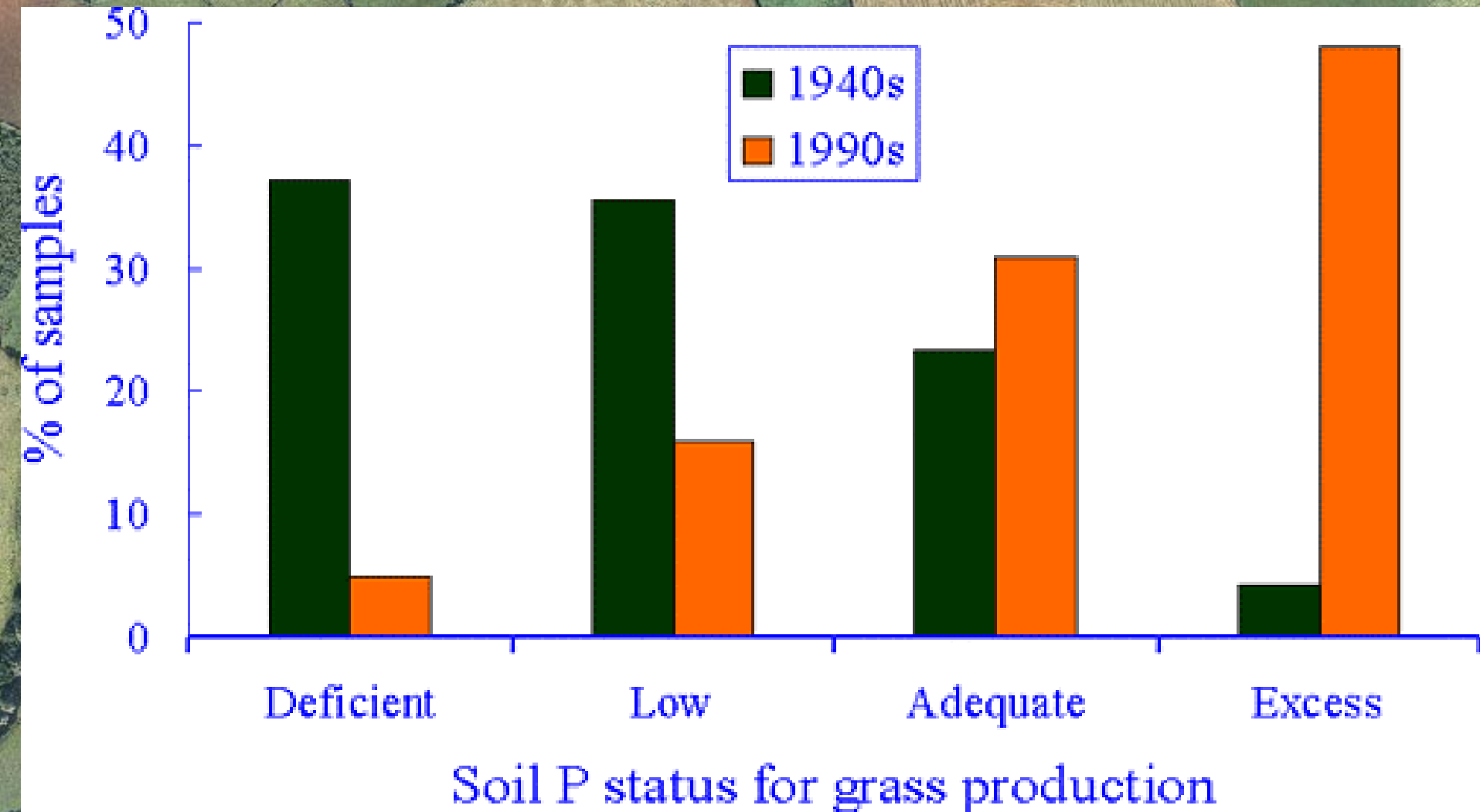


Background - How did we get to this situation?

- Habitat modification
- Introduction of *Ranunculus*



Background - How did we get to this situation?







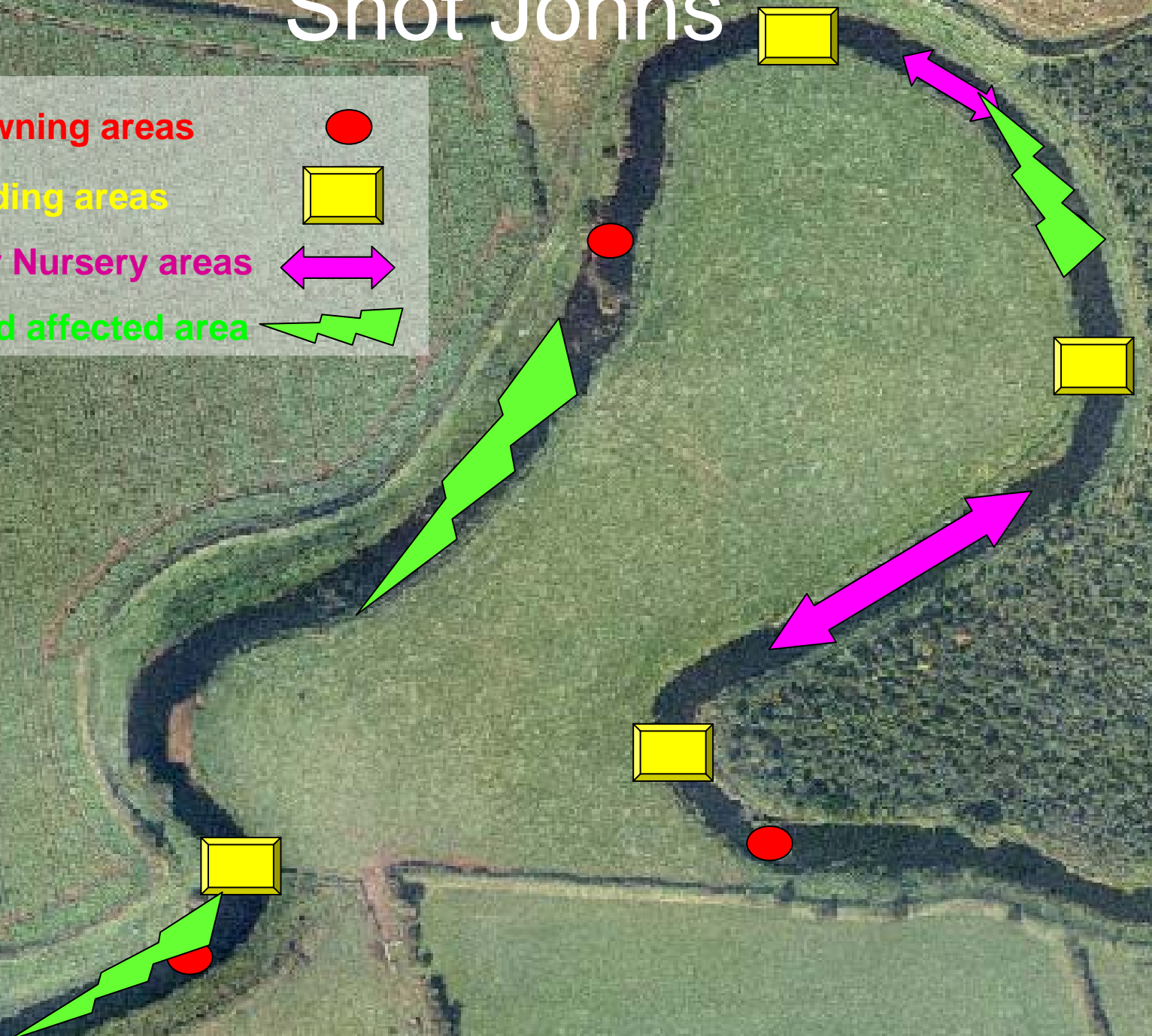
Shot Johns

Spawning areas ●

Holding areas □

Poor Nursery areas ↔

Weed affected area ⚡



Poor Nursery habitat

- Uniform flow
- No cobble / boulders



Ranunculus problem on spawning areas

Loss of spawning habitat

Increases siltation rates by slowing flow



An aerial photograph showing a winding river or stream cutting through a landscape of agricultural fields. The fields are a mix of vibrant green and golden-brown, indicating different stages of crop growth or types of land use. The river flows from the top right towards the bottom left, with several meanders. The text 'Work undertaken' is overlaid in white at the top center.

Work undertaken

- Cleaning and addition of spawning gravels
- Removal of weed (checker board cut)
- Addition of nursery stone

Cleaning and addition of spawning gravels



Cleaned gravels



Removal of weed (chequer board cut)



Addition of nursery stone





How will we judge success?

Post works monitoring including:

Redd counts

Electrofishing

NIEA habitat assessment

UUC – Invertebrate and Macrophyte sampling

Summary & recommendations

- Important to understand “How we got to the present situation”
- Need to concentrate works on addressing what the river is lacking (needs expert assessment)
- Need to monitor over period of time to measure success and guide future works

An aerial photograph of a rural landscape. A winding river flows through the center, surrounded by various agricultural fields in shades of green and brown. The fields are separated by thin lines, likely fences or roads. The overall scene is a typical agricultural landscape.

Thank you

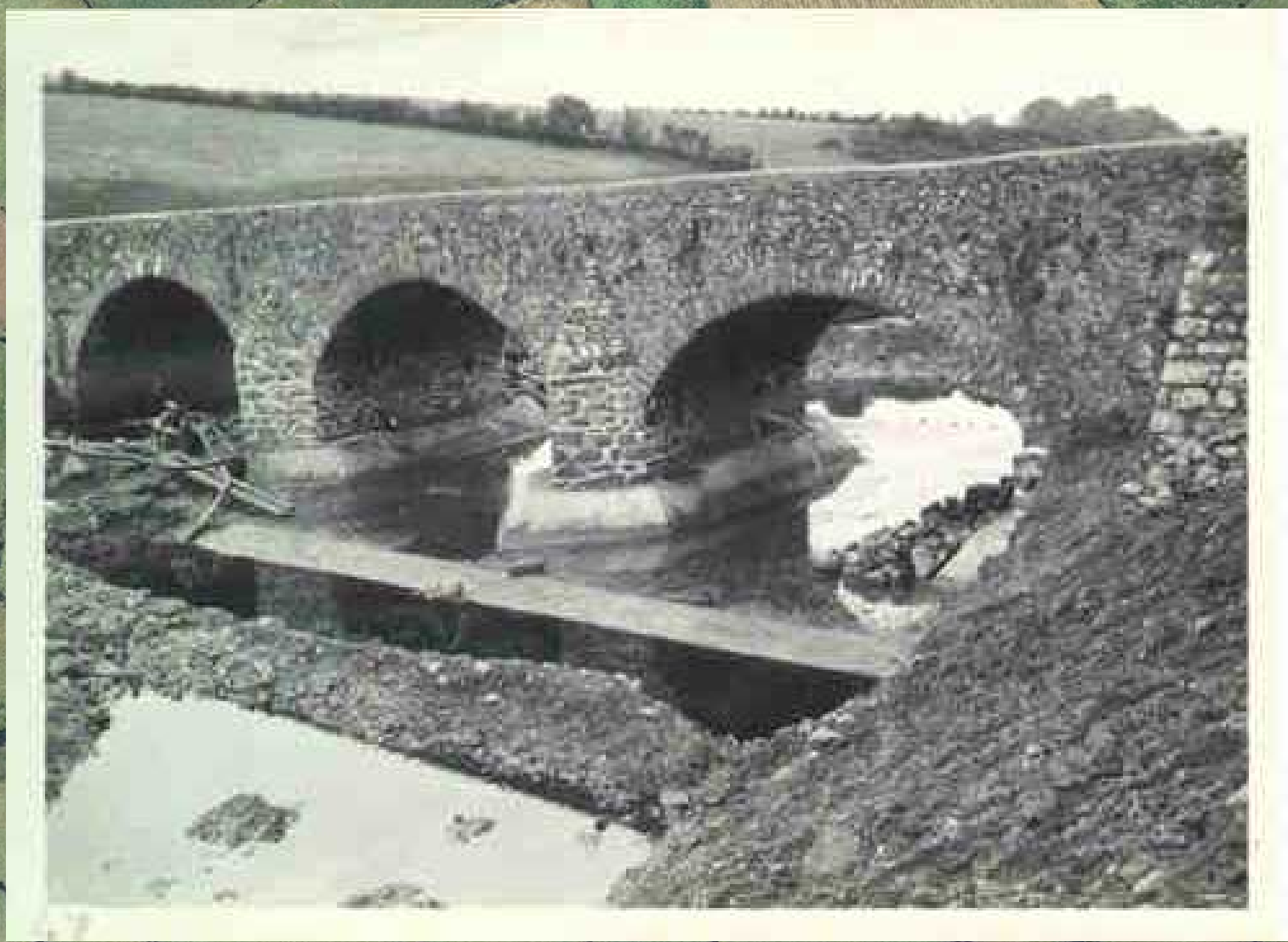




120













329

