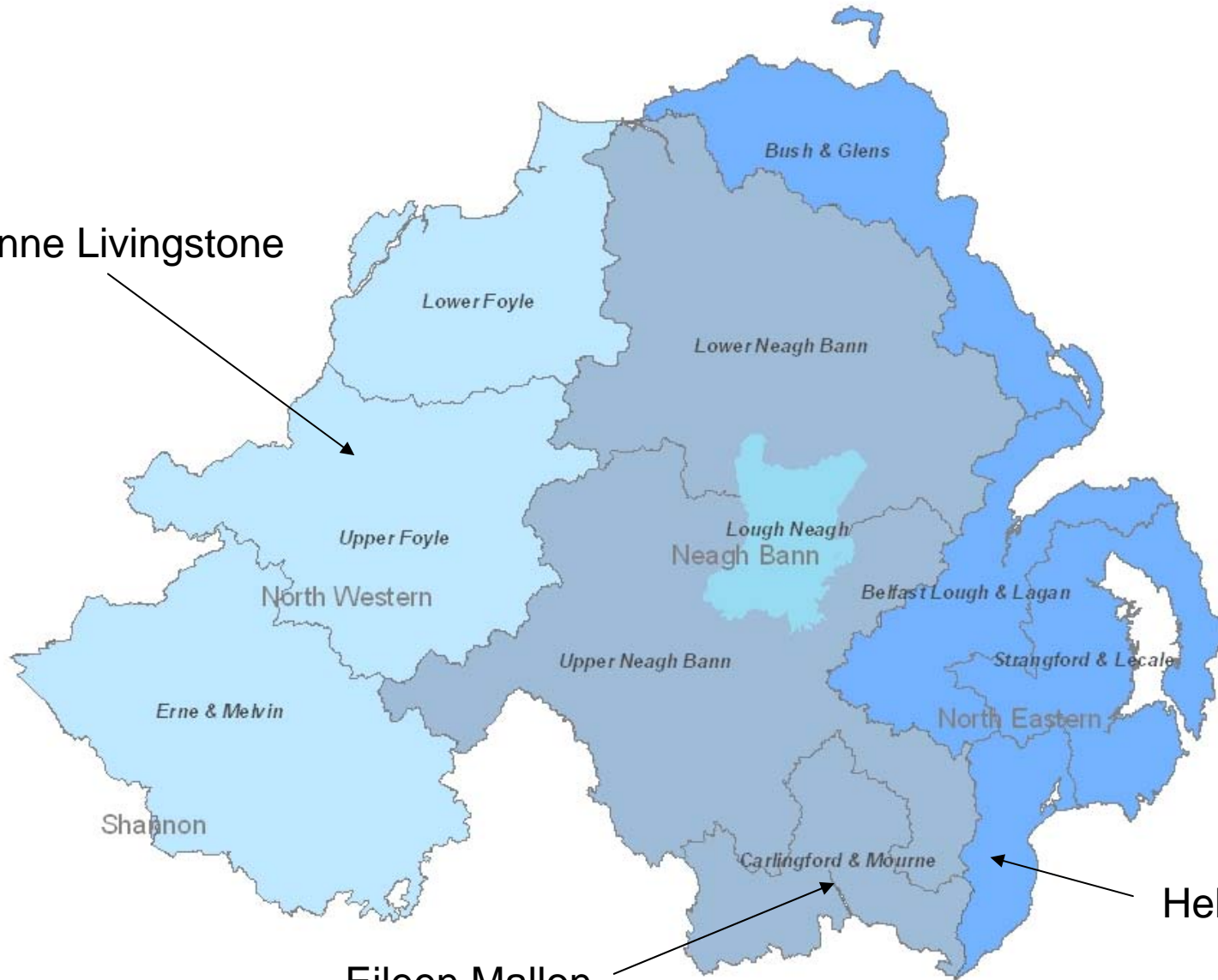


Carlingford & Mourne Catchment Stakeholder Group

Eileen Mallon
Neagh Bann RBD
Catchment Officer
Eileen.Mallon@doeni.gov.uk

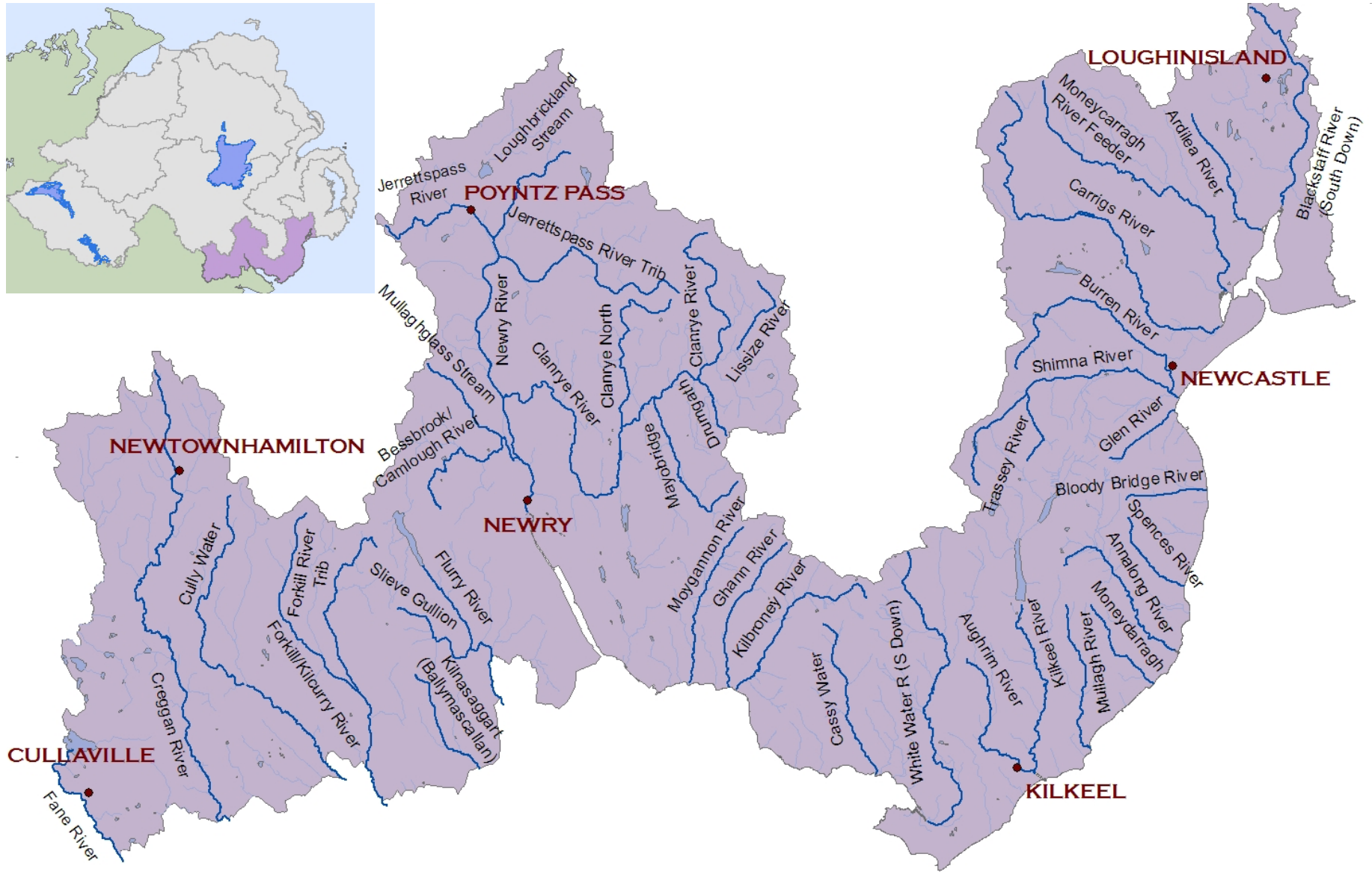
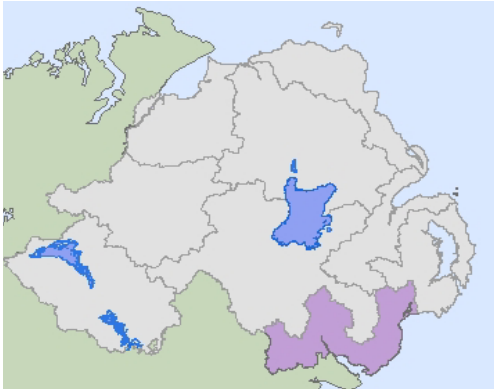
Helen Nutt
North East RBD
Catchment Officer
Helen.Nutt@doeni.gov.uk

Joanne Livingstone



Helen Nutt

Eileen Mallon



Terms of Reference

The Catchment Group will:

- Provide a source of help, support and advice for local / regional stakeholders.
- Provide support and advice on resolving water management / quality issues.
- Provide knowledge on the Carlingford and Mourne Catchment to ensure issues of local significance are identified.

Group Operation

1. EHS will service the Catchment Group, including recording & communicating all decisions.
2. The Catchment Group will provide support & advice on appropriate areas of interest/concern.
3. EHS will draw upon members of the Catchment Group outside normal meetings, as appropriate, to assist with technical & detailed work.
4. Membership & the terms of reference will be reviewed on an annual basis.

5. EHS will use its website to publish Catchment Group meeting details & other communications.
6. Members will be expected, if necessary, to share a role in resolving conflict.
7. Local representatives will be responsible for feeding back to national colleagues.
8. Members are expected to have a basic understanding of the Water Framework Directive (WFD) in order to contribute.
9. The Catchment Group will meet approximately 2 times per year.

Catchment Officer role

- Coordinate Catchment Stakeholder Groups
- Highlight stakeholder concerns to relevant bodies
- Encourage information exchange and raise awareness
- Ensure stakeholder input into River Basin Management Plans
- Facilitate stakeholder engagement
- Encourage water quality protection and enhancement projects
- Support water management committees/ working groups
- Coordinate Targeted Catchment Action Plans

Working with

- Interested parties
- Community groups
- Local Biodiversity Officers
- NGOs
- Government Departments/ Companies
- Environmental experts
- Local Angling Clubs & Ulster Angling Federation Ltd
- Farmers, Ulster Farmers Union & NIAPA
- Industries – Quarries, Hydropower, Aquaculture
- Recreational water users
- Etc.

Working aims

- Develop strong links with interested parties
- Exchange information, advice and knowledge
- Address local water quality issues
- Work together towards a common goal

Targeted Catchment Action Plans

E.g. The Six Mile Water

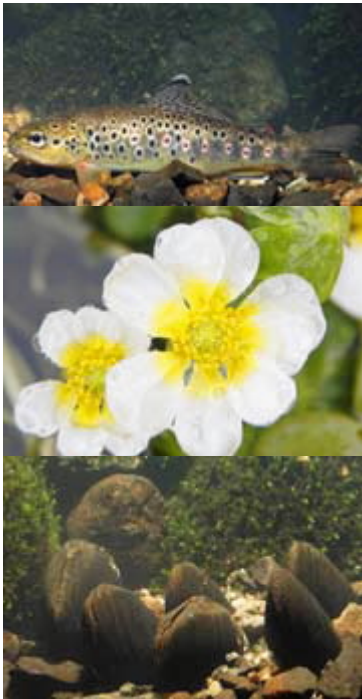
- Historical problems
- Local interest
- Number of users and pressures
- Met with stakeholders to develop an issues log
- All issues delegated for action



Category	Issues	Comments
WWTW	Sewage discharge - sewage debris on river bed	Latest: 27/12/07 ~ stat sample taken
WWTW	Pumping station at XXX causes problems	Details of As for severity/number of reports of PI's, to be checked. Obtain NIW info. Visit to be conducted.
Industrial	LHS bank upstream from old mart - culvert with oil & effluent.	'Wheeled' camera survey to be arranged
Industrial	XXXX Ltd.- oil discharge.	Pre-notice served 12/12/07
Septic Tanks	XXX road, septic tanks & washing machines discharging to the river.	River walks required, and subsequent dye testing, then a consents issue.
Agriculture	XXXX Road - farm - overflowing slurry tanks and slurry dumping at dark.	Stat sample taken
Misc.	Sentry Lane Biodiversity Officer working on project on Sentry Lane.	Meeting on 18/12/07 - Local Residents and Rivers Agency and LBO planning to clean and realign the waterway. Copy of plans to be obtained.
Abstraction	Small turbine at XXX has been operating without grills	DCAL contacted for response

RIPPLE

Rivers Involving People, Places & Leading by Example



- Ballinderry River, Co. Tyrone
- community-based project
- WWF & Ballinderry Fish Hatchery Ltd.
- Vision for future management, conservation & use
- Vision launched on 3rd April in Cookstown
- www.wwf.org.uk/ripple

PAIRS

Projects Aiming to Improve aquatic Resources

- Register of projects
- Increase awareness of local projects
- Sharing information and successes
- Learning from the experiences of others
- Building partnerships between complimentary projects

http://www.eh.sni.gov.uk/water/wfd/public_partic/pairs.htm

Way forward for the group

- Your views and priorities
- Future meetings
 - chair,
 - format,
 - venues,
 - speakers,
 - agenda items
- Ideas and actions for the future...

If you have any issues you'd like to discuss
please contact us:

028 92 623164

Helen.Nutt@doeni.gov.uk

028 92 633442

Eileen.Mallon@doeni.gov.uk