

Draft River Basin Plans

Erne & Melvin Catchment

Stakeholder Group

Gabriel Nelson – NIEA



Overview

- Brief overview of the river basin planning process
- Dealing with the consultation questions



What is a RBMP ?



The plans cover:
groundwater
wetlands
rivers
lochs/lakes/loughs
transitional waters (eg estuaries)
coastal waters

Set out the objectives to be achieved and the actions required.

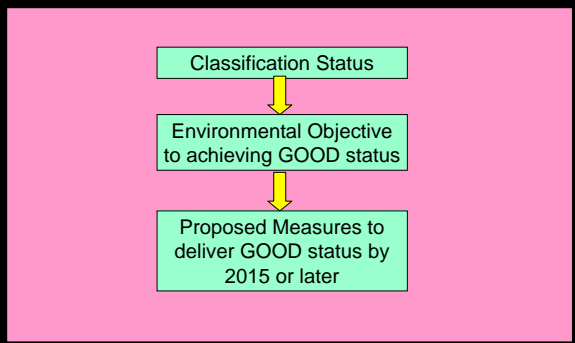
River Basin Districts



Northern Ireland River Basin Districts



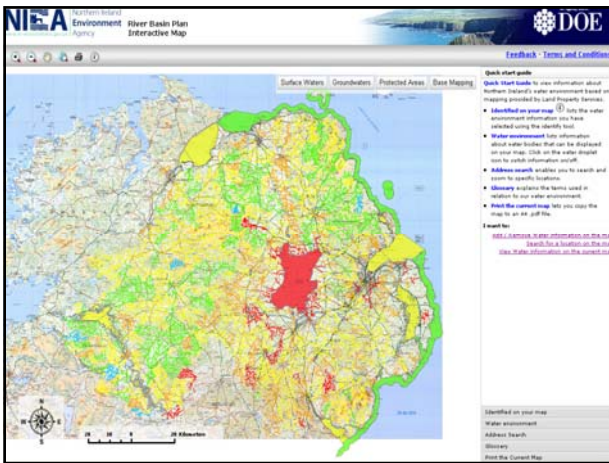
Water Framework Directive Steps

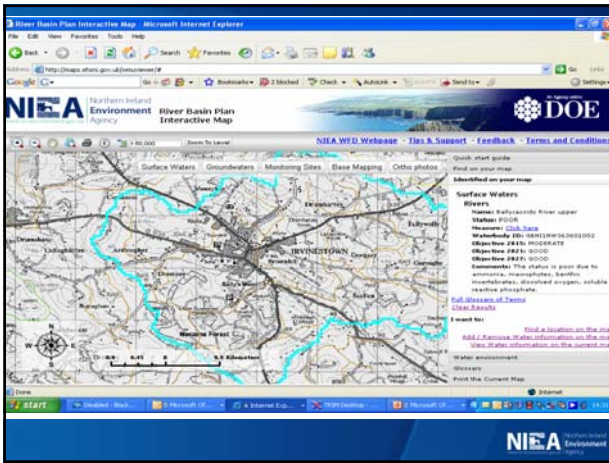


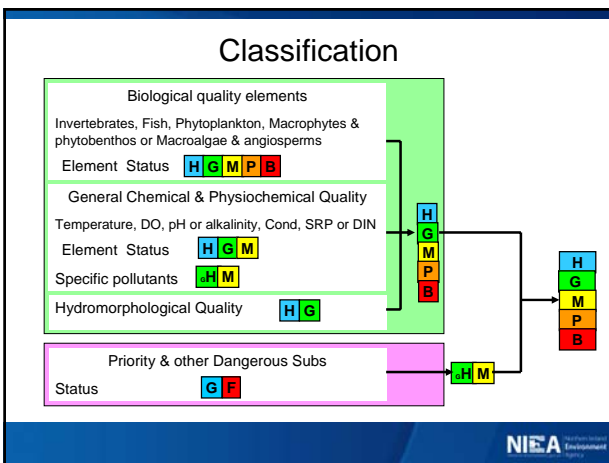
The central graphic consists of four overlapping rounded rectangular boxes arranged in a circle:

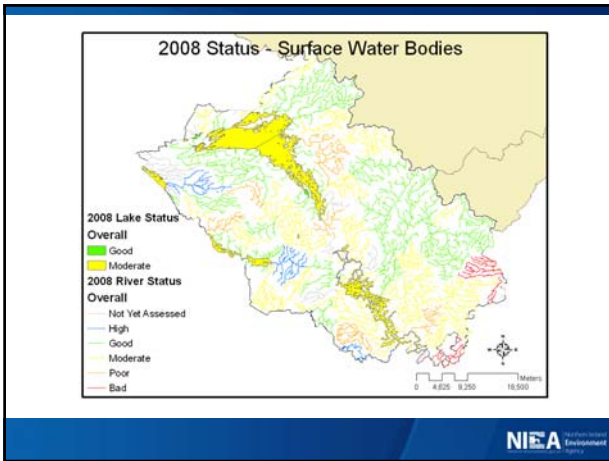
- Top:** Draft River Basin Management Plan (with a circular icon)
- Left:** Interactive web map (with a map icon)
- Right:** www.ni-environment.gov.uk/wfd (with an information icon)
- Bottom:** Managing our shared waters Working Together (with a photo of people)







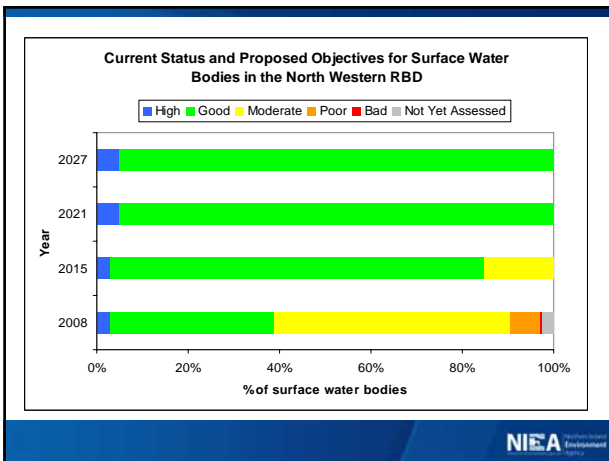


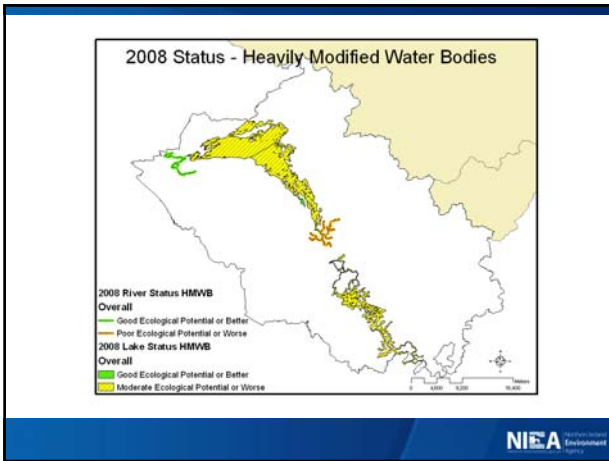


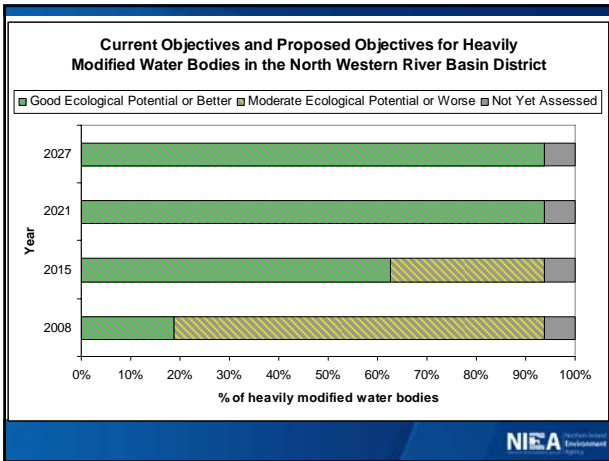
Rules for Prioritising Provisional Objective Setting

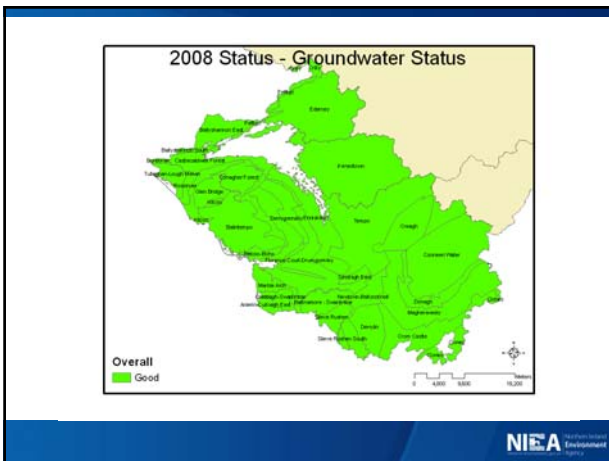
- Rule 1: Where a water body is at **moderate** status in **2008** the provisional objective for **2015** is **good** status.
- Rule 2: Where a water body is at **poor** status in **2008** the provisional objective for **2015** is **moderate** status and the provisional objective for **2021** is **good** status.
- Rule 3: Where a water body is at **bad** status in **2008**, the provisional objective for **2015** is moderate status and the provisional objective for **2021** is **good** status

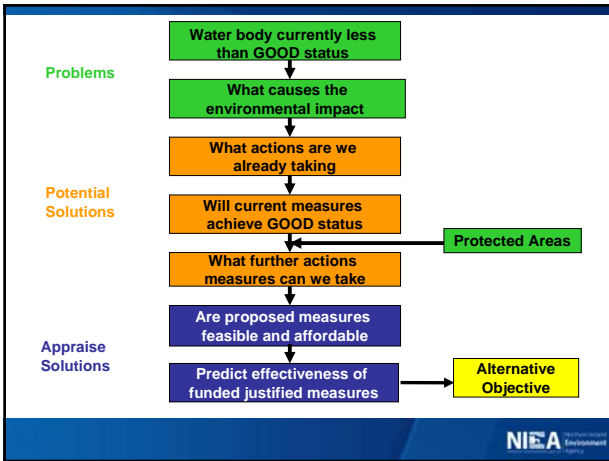
NIEA National Institute for Environmental Assessment











Programme of Measures

Two scenarios for measures:

- actions funded / legislation in place and timetabled - Programme for Government, 2008-11
- actions not funded/new legislation - Programme for Government, 2011-14

NIEA Natural Heritage
Environmental
Assessment

Supplementary Measures

- Low/zero phosphorus (P) detergents
- Improved education and awareness campaigns
- Targeted advisory visits and inspections
- Develop Catchment models
- Further investigate sources and options for further removal of P from point discharges and diffuse sources

NIEA Natural Heritage
Environmental
Assessment

Timetable

Dec 2008	Publish draft RBMP for 6 month consultation
Dec 2009	Publish 1st RBMP
Dec 2010	Pricing policies for cost recovery of water services
Dec 2012	Programme of measures operational
Dec 2013	Prepare for 2nd RBMP
Dec 2015	Achieve Environmental Objectives – 1st RBMP

Breakout Sessions

- Breakout groups 1,2,3...
- ~10 mins on each consultation question
- Groups facilitated by CSG chair, catchment officer & presenter
- Nominated scribe & rapporteur
- Rapporteur to give brief feedback from each breakout group
- Feedback used as part of the public consultation [22 Dec 08 to 22 Jun 09] to help us revise our proposals for publishing first River Basin Management Plan in Dec 09.

Our aim is to protect, conserve and promote our natural and built environment for the benefit of present and future generations.
