

Draft River Basin Plans

Lower Foyle
Catchment Stakeholder Group

Alvin Wilson – NIEA

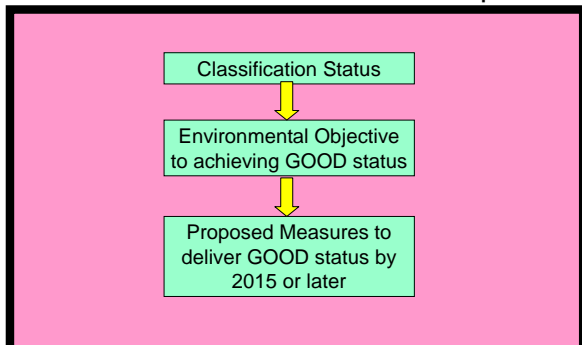


Overview

- Brief overview of the river basin planning process
- Dealing with the consultation questions



Water Framework Directive Steps



Northern Ireland River Basin Districts

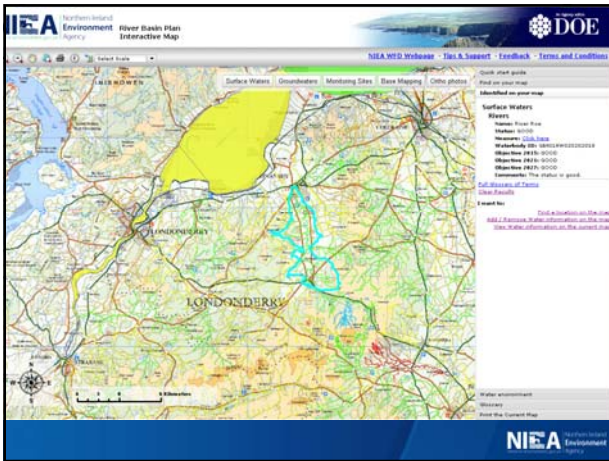


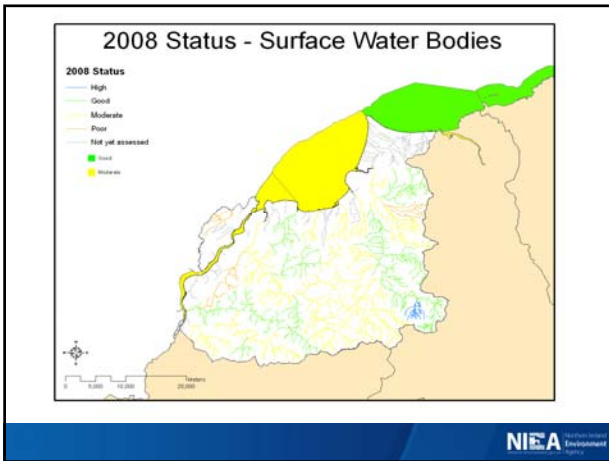
NIEA Northern Ireland Environment Agency

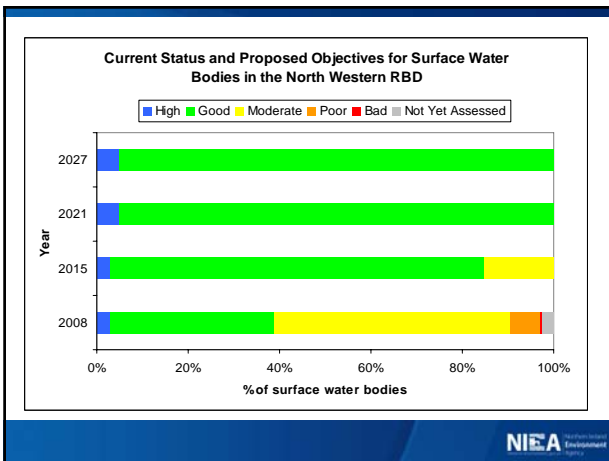


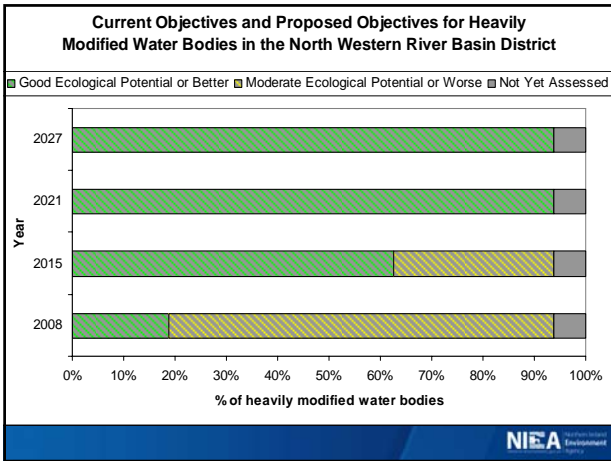
NIEA Northern Ireland Environment Agency

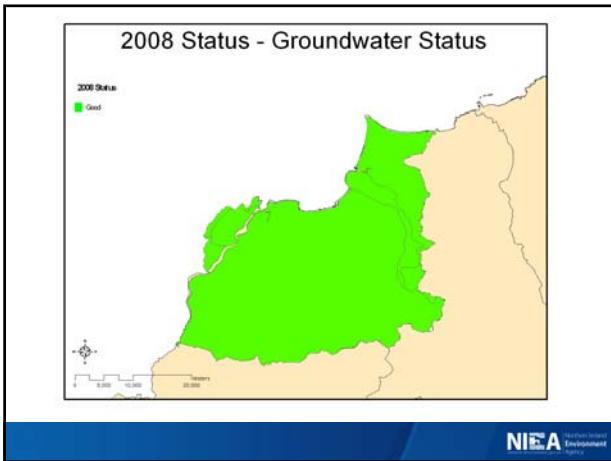
The screenshot shows the 'River Basin Plan Interactive Map' website. The main area displays a map of Northern Ireland with various colored overlays representing different environmental data. The sidebar on the right contains a 'Quick start guide' with bullet points, a search bar, and a 'Feedback - Terms and Conditions' link. The NIEA logo is in the top left, and the DOE logo is in the top right.

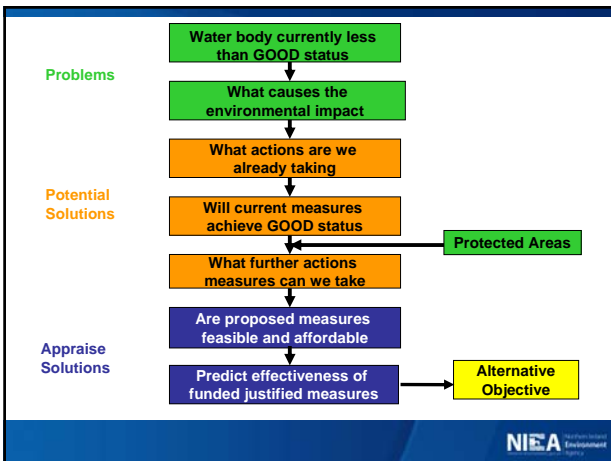












Programme of Measures

Two scenarios for measures:

- actions funded / legislation in place and timetabled - Programme for Government, 2008-11
- actions not funded/new legislation - Programme for Government, 2011-14

Supplementary Measures

- Low/zero phosphorus (P) detergents
- Improved education and awareness campaigns
- Targeted advisory visits and inspections
- Develop Catchment models
- Further investigate sources and options for further removal of P from point discharges and diffuse sources

Water Information Days

open to the public and FREE of charge - an opportunity to:

- Speak with NIEA staff about draft River Basin Plan proposals to improve the water environment - let us know about any community run initiatives that you are involved in that may help;
- Search our new interactive web map to find out more about your local river, lake, coastal waters and groundwater;
- Identify events and see how they can be used as indicators of water pollution;
- Collect feedback on local water management, which could be utilised in the classroom for those teachers delivering Physical Practical at GCSE or Environment and Society at Key Stage 3.

Venue	Date	Time
Crawfordsburn Country Park Dunlop Road, South, Inverclyde, Co. Cymru, BT19 1LE	25 March 2009	2-8pm
Ecos Centre Broughshane Road, Sullaghine, Co. Antrim, BT41 1XA	1 April 2009	2-8pm
Lough Agency 12 Malone Road, Londonderry, Co. Londonderry, BT47 1AB	8 April 2009	2-8pm
The Coastal Zone 11 Bath Road, Portrush, Co. Antrim, BT56 8AP	22 April 2009	2-8pm
Castle Archdale Country Park Antrim, Co. Antrim, BT41 1EP	29 April 2009	2-8pm
Peatlands Park 11 Donaghadee Road, Dungannon, Co. Tyrone, BT71 4BW	6 May 2009	2-8pm

Check our website www.niea-environment.gov.uk/wfid or phone (028) 9362 3100 for further information.







Breakout Sessions

- Breakout groups 1,2,3...
- ~10 mins on each consultation question
- Groups facilitated by CSG chair, catchment officer & presenter
- Nominated scribe & rapporteur
- Rapporteur to give brief feedback from each breakout group
- Feedback used as part of the public consultation [22 Dec 08 to 22 Jun 09] to help us revise our proposals for publishing first River Basin Management Plan in Dec 09.