

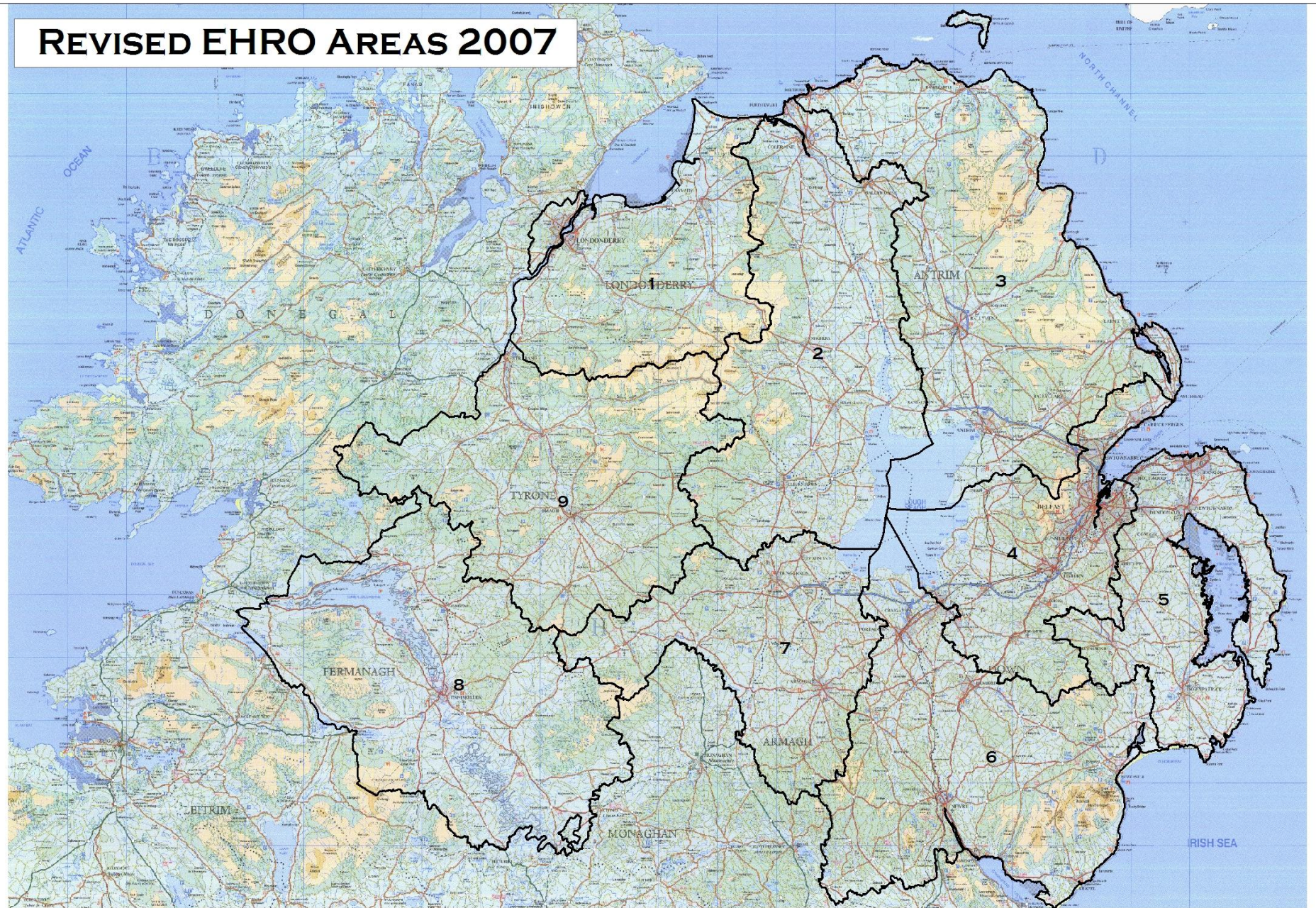
**LOWER NEAGH BANN**  
**CATCHMENT STAKEHOLDER GROUP**

The Elk, Toomebridge

Thursday 6<sup>th</sup> March 2008

John Hill

# REVISED EHRO AREAS 2007



Reproduced from Ordnance Survey of Northern Ireland's data with the permission of the Controller of Her Majesty's Stationery Office. © Crown copyright and database rights EMOU206 2" and "Unauthorised reproduction infringes © Crown copyright and may lead to prosecution or civil proceedings".

# STAFFING LEVELS

É Presently 1 Manager

É 1 Coastal Contingency Officer

É 7 Water Quality Inspectors

É 4 Water Quality Samplers

É 2 Secretaries

# WORKLOAD

## OCTOBER 2007 TO FEBRUARY 2008

- É Water (N.I.) Order 1999 Domestic Consents - 561
- É WWTW <250 - 340 Visits
- É WWTW >250 - 15 Visits
- É Industrial Samples - 500 Samples
- É River Monitoring - 2200 Samples
- É Cross Compliance Farm Visits

# POLLUTION INCIDENTS

É 135 INCIDENTS REPORTED

É 85 SUBSTANTIATED

É 17 STATUTORY SAMPLES LIFTED  
WITH A VIEW TO PROSECUTION

# POLLUTION PREVENTION

É An ongoing programme visiting industrial, commercial, agricultural and domestic premises to locate significant threats of pollution.

# PROGRESS TO DATE

Further to our previous meeting with Catchment Stakeholder Groups some of the work which is already underway.

## Ballinderry River Enhancement Association (BREA)

Gareth Parke & Mary Connacher - WQI<sub>08</sub>, met with Alan Keyes to initiate an action plan on point sourced discharges as identified by BREA.

## Ballinderry River

Work Plans drawn up - 17 stress points identified  
- 4 investigated & 3 Statutory samples lifted.

## Lower Bann

13 Stress Points identified - work to begin shortly.

# PROGRESS TO DATE

## Six Mile Water

Meeting with Eileen Mallon - Catchment Officer, Paul Burnside - WQI, Robert Marshall - UAF, Brian Luke - PPO and Alan Kirkpatrick - Bailiff.

Identified stress points - Agricultural, NI Water Ltd., Industrial Sites, Illegal Landfill Sites

Approximately 50 visits carried out so far - resulting in 3 Agricultural and 2 NI Water Ltd. statutory samples lifted.

# PROGRESS TO DATE

## Maine

Work continues on the 2005 Pollution Prevention Report Targeted Catchments Survey for the River Main & River Braid.

Continuing liaison with Stephen Gilmore - Maine Enhancement Partnership.

# WHAT'S NEXT

- É Continued liaison with all Catchment Stakeholder Groups.
- É Annual Bathing Water sampling under EU Bathing Water Directive to begin May 2008.
- É Continue with ongoing work programme.