

Selection of
Local Management Areas
for Implementation of
River Basin Management Plans

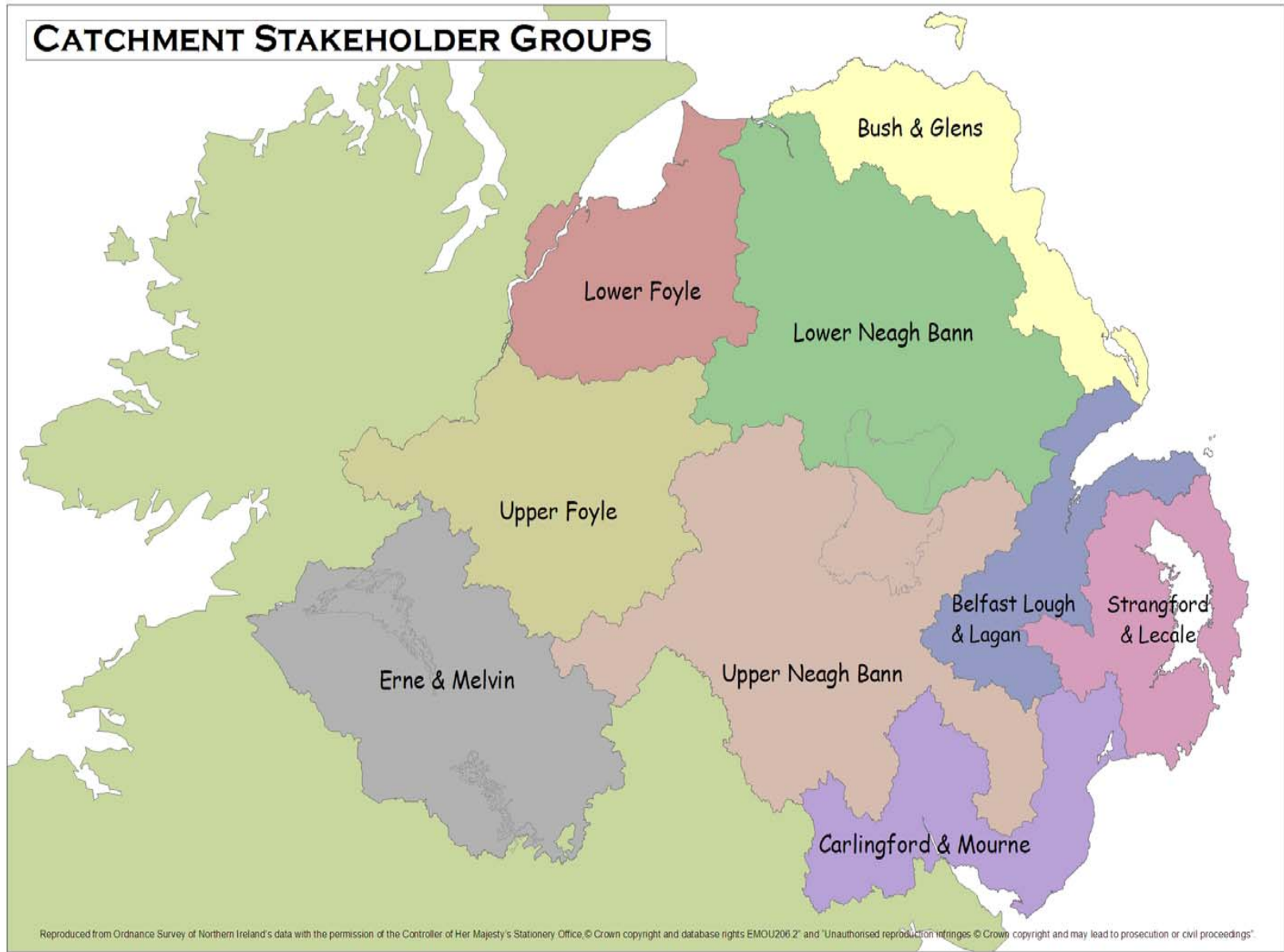
**Lower Foyle
Catchment Stakeholder Group**

Caroline Steele – NIEA
River Basin Planning

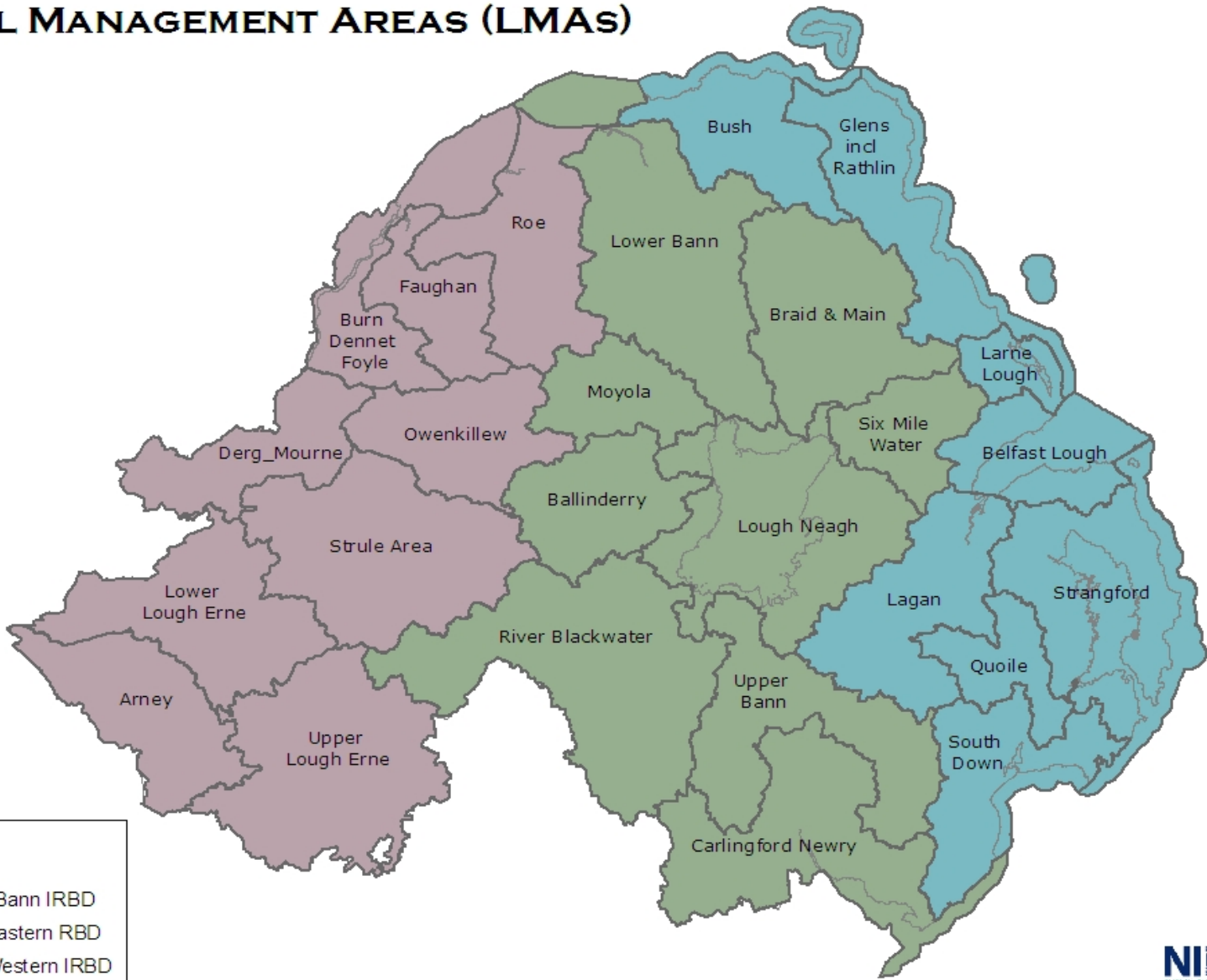
Implementation of the River Basin Management Plans

- The Plans cover the period 2009 – 2015
- Need to focus on the local nature of the plans
- Need to develop an implementation programme over the six year cycle

CATCHMENT STAKEHOLDER GROUPS



LOCAL MANAGEMENT AREAS (LMAs)



- LMA
- Neagh Bann IRBD
- North Eastern RBD
- North Western IRBD

Why Work at an LMA Level ?

- To develop a localised approach to managing water bodies, yet provide a coherent and comprehensive overview of the pressures at a catchment level it is proposed to develop action plans at the Local Management Area level (LMA).
- The LMAs represent the hydrological water sheds of the main rivers within the RBDs.
- In targeting resources to deliver good ecological quality, it is considered more effective to focus concerted action on a limited number LMAs.
- It is proposed to select 9 LMAs out of the 26 each year for detailed analysis, this would mean each LMA is assessed twice in each 6 year planning cycle.

LMA Selection Process

Starting point - Ecological Elements:

- Invertebrates
- Macrophytes
- Fish
- Pearl Mussels

Percentage Failure and Severity of Failures

- % less than Good
- % less than Moderate
- % Bad

Reason for Failure and Percentage Failure

RWBID	Name WB	Overall Eco Status	Ecology Elements				SURFACE WATER STATUS
			Invertebrates	Macrophytes	Fish	Pearl Mussel	
GBNI1NW010101045	Burn Dennet	2	2	1	0	0	2
GBNI1NW010101069	Altinaghree Burn	3	3	1	0	0	3
GBNI1NW010101070	Burn Dennet	2	2	2	0	0	2
GBNI1NW010101071	Burn Dennet	3	3	1	0	0	3
GBNI1NW010101072	Dunny Boe Burn	2	1	1	2	0	2
GBNI1NW010101075	Glenmoman River	3	3	1	2	0	3
GBNI1NW010101076	Burngibbagh	4	4	2	0	0	4
GBNI1NW010103062	Carrigans	4	0	0	0	0	4
GBNI1NW393901002	Skeoge River	4	4	2	4	0	4
Total No. WBs 9	No. WB < Good	6					
	No. WB <Mod	3					
	No. WB Bad	0					
	% < Good	66.6					
	% <Moderate	33.3					
	% Bad	0					
				= ECO SCORE			

In Summary

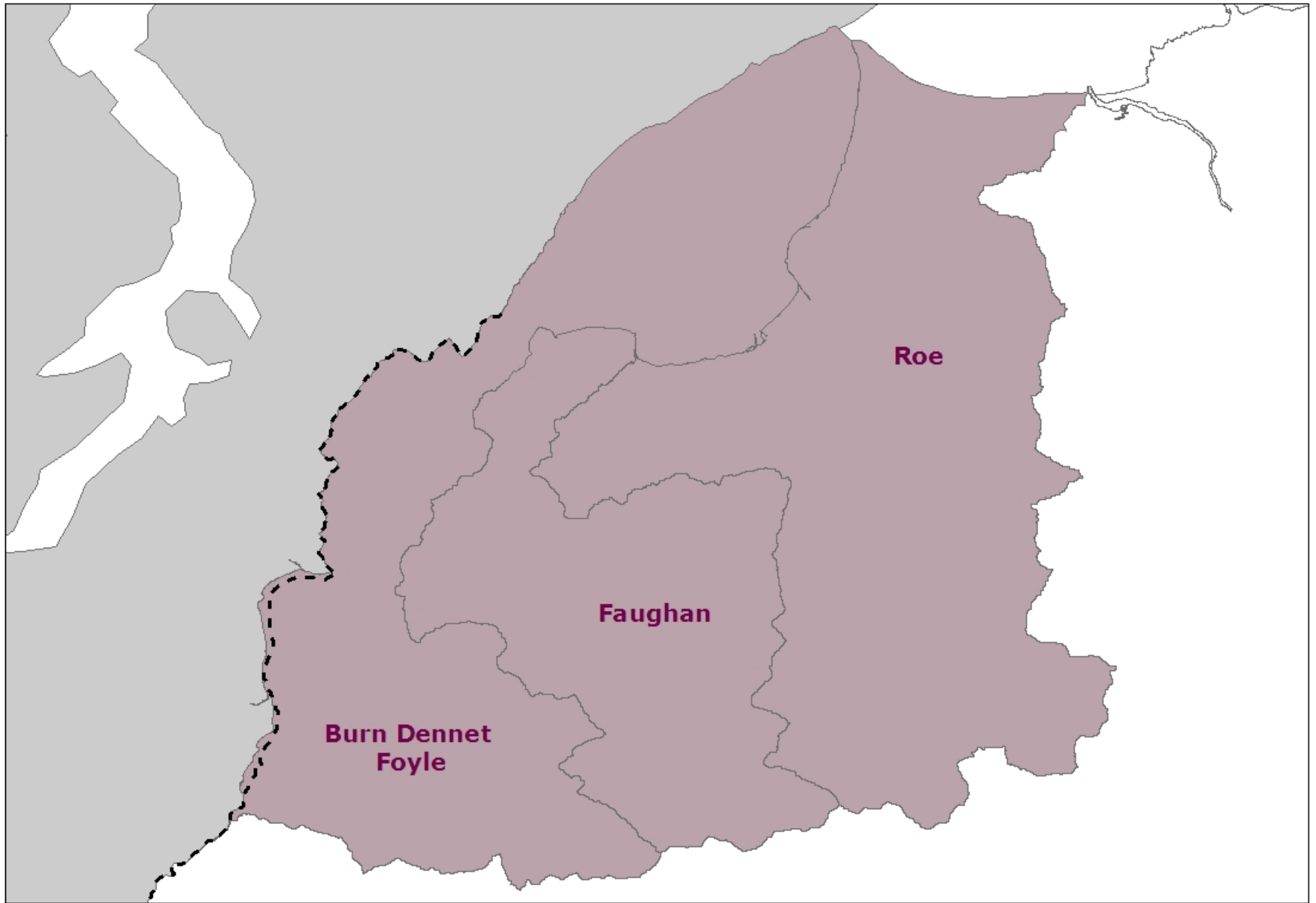
- Classification data – indicator of impact
- Severity of impact – bad > moderate > good

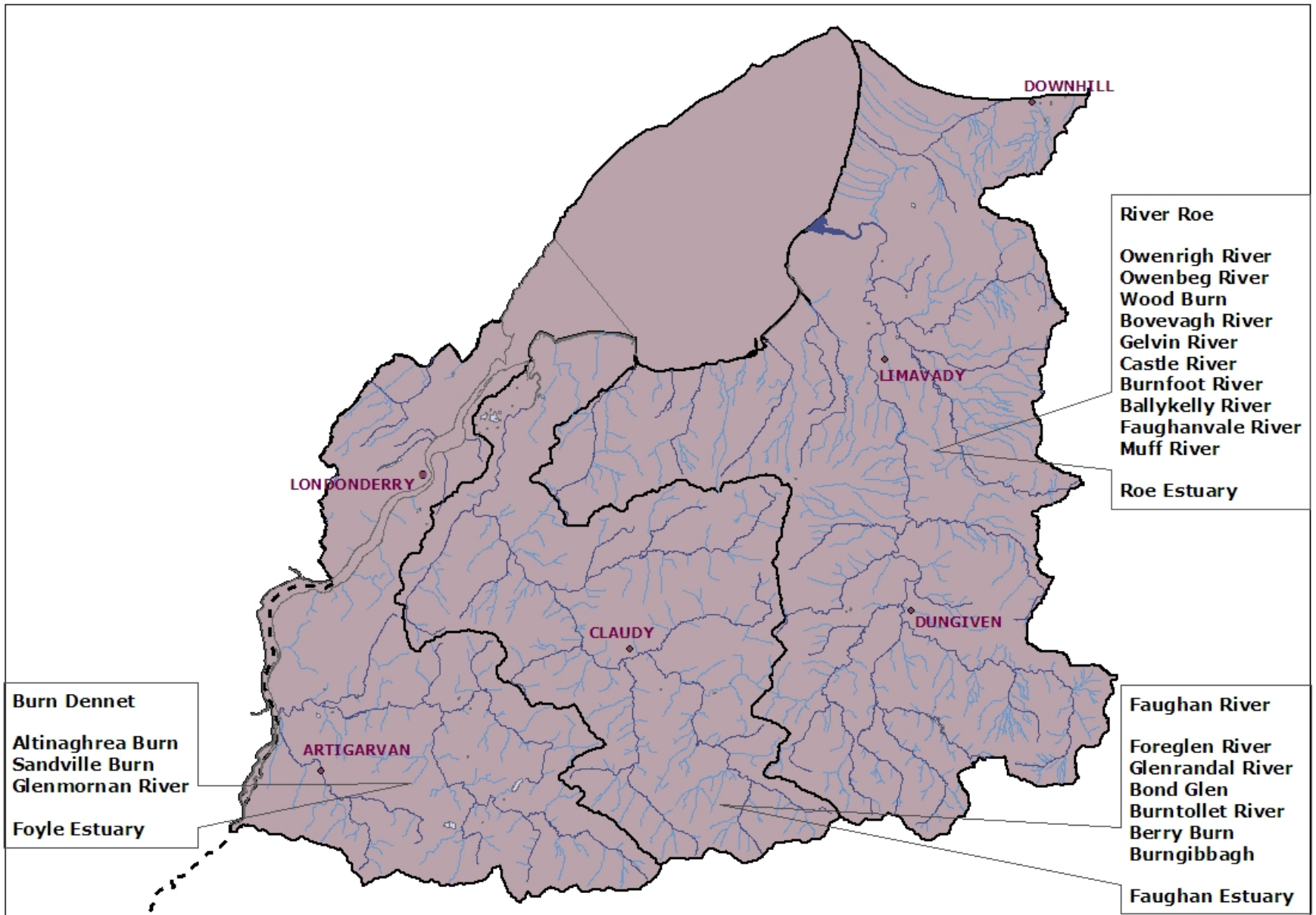
Eco Score =

% < Good + % < Moderate + % Bad

LMA Implementation Plan Selection

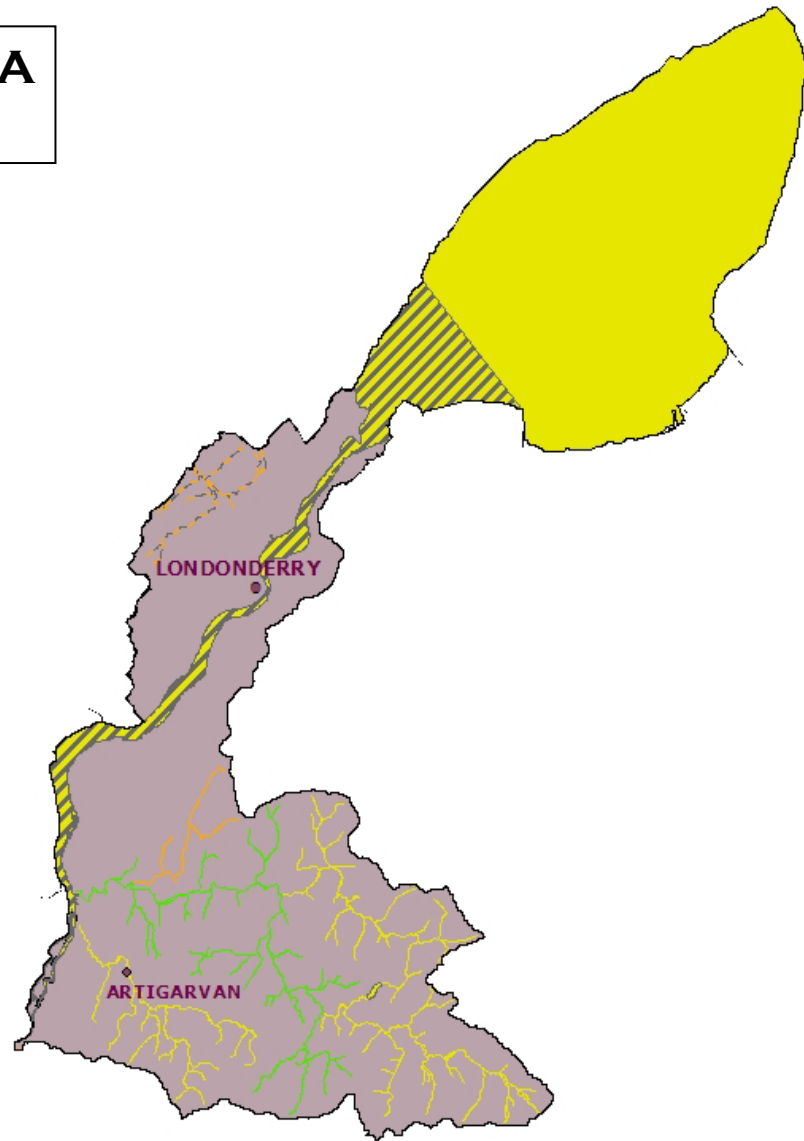
Option 1		Option 2		Option 3		CSG Area
Local Management Area	Eco Score	Local Management Area	Eco Score	Local Management Area	Eco Score	
Strangford	193.3	Burn Dennet Foyle	100.0	Lower Lough Erne	87.9	Erne & Melvin
Lagan	159.1	Lower Lough Erne	87.9	Upper Lough Erne	72.1	
Belfast L	157.1	Upper Lough Erne	72.1	Arney	39.3	
Ballinderry	137.5	Roe	60.0	Owenkillew	50.0	Upper Foyle
Lough Neagh	123.8	Owenkillew	50.0	Derg& Mourne	47.1	
Bush	123.5	Derg & Mourne	47.1	Strule	45.0	
Blackwater	121.6	Strule	45.0	Burn Dennet Foyle	100.0	Lower Foyle
Upper Bann	110.7	Arney	39.3	Roe	60.0	
South Down	105.3	Faughan	30.0	Faughan	30.0	
Quoile	100.0	Ballinderry	137.5	Ballinderry	137.5	Upper Neagh Bann
Burn Dennet Foyle	100.0	Lough Neagh	123.8	Blackwater	121.6	
Lower Bann	97.5	Blackwater	121.6	Upper Bann	110.7	
Carlingford & Newry	91.4	Upper Bann	110.7	Lough Neagh	123.8	Lower Neagh Bann
Lower Lough Erne	87.9	Lower Bann	97.5	Lower Bann	97.5	
Moyola	78.9	Carlingford & Newry	91.4	Moyola	78.9	
Six Mile	75.0	Moyola	78.9	Six Mile	75.0	
Upper Lough Erne	72.1	Six Mile	75.0	Braid & Main	51.4	
Roe	60.0	Braid & Main	51.4	South Down	105.3	Carligford & Mourne
				Carlingford & Newry	91.4	
Glen & Rathlin	52.4	Strangford	193.3			
Braid & Main	51.4	Lagan	159.1	Strangford	193.3	Strangford & Lecale
Owenkillew	50.0	Belfast L	157.1	Quoile	100.0	
Larne	50.0	Bush	123.5	Lagan	159.1	Belfast & Lagan
Derg& Mourne	47.1	South Down	105.3	Belfast L	157.1	
Strule	45.0	Quoile	100.0	Bush	123.5	Bush & Glens
Arney	39.3	Glen & Rathlin	52.4	Glen & Rathlin	52.4	
Faughan	30.0	Larne	50.0	Larne	50.0	



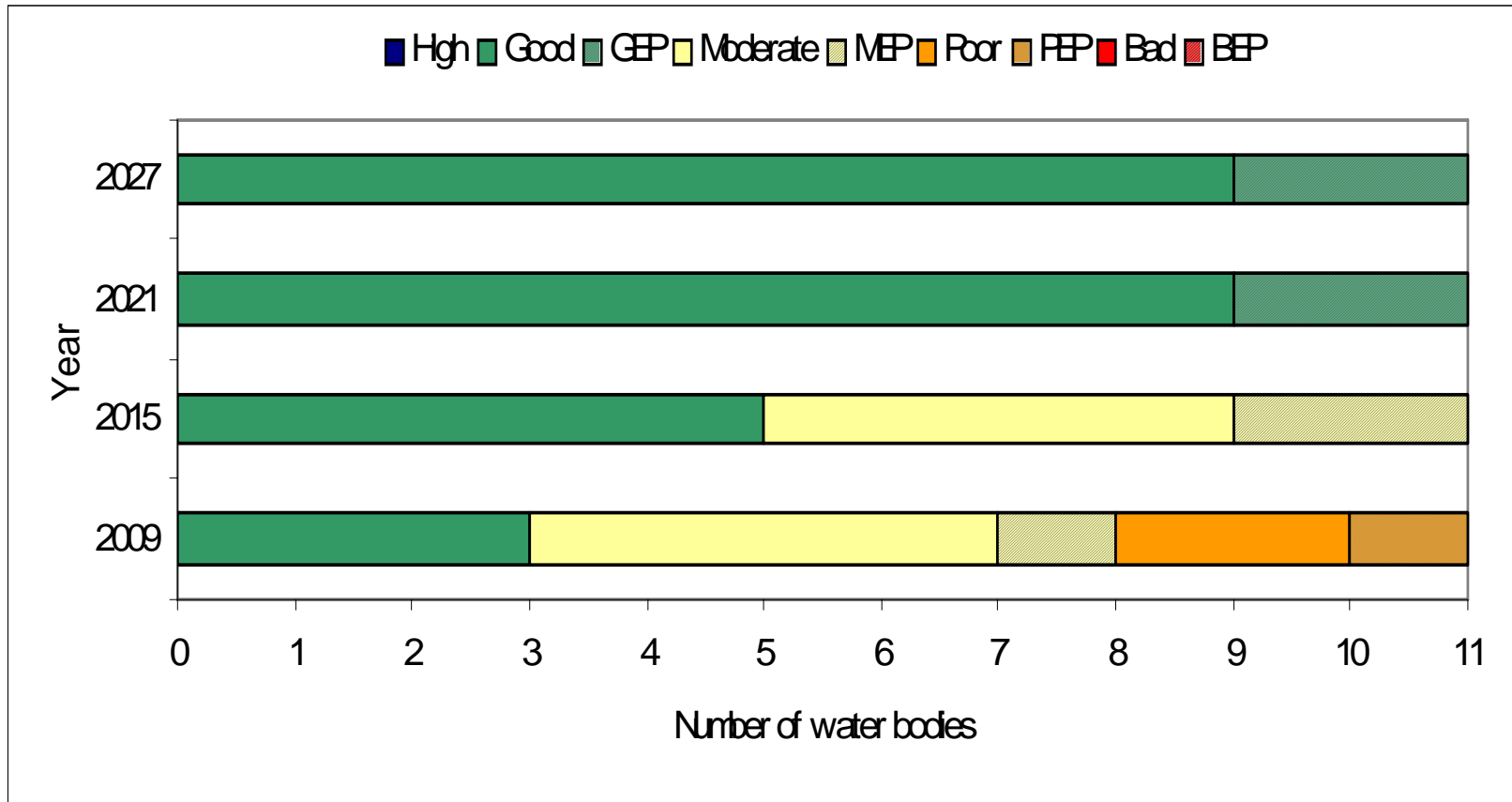


BURN DENNET FOYLE LMA CLASSIFICATION 2009

- HIGH
- GOOD
- MODERATE
- POOR
- BAD
- - - HEAVILY MODIFIED WATERBODY
- HIGH
- GOOD
- MODERATE
- POOR
- BAD
- ▨ HEAVILY MODIFIED WATERBODY



Current Status and Proposed Objectives in the Burn Dennet Foyle LMA



Proposed Implementation Programme for Lower Foyle CSG

Programme Year	LMA to focus attention on
2010	Burn Dennet Foyle
2011	Roe
2012	Faughan
Programme Year	Review situation in LMA
2013	Burn Dennet Foyle
2014	Roe
2015	Faughan

Any Questions ?
Discussion / Suggestions?