

Bush and Glens Catchment Stakeholder Meeting

14th October 2010

Update on our Work
Since May 2010

Conor Symington
Senior Water Quality Inspector

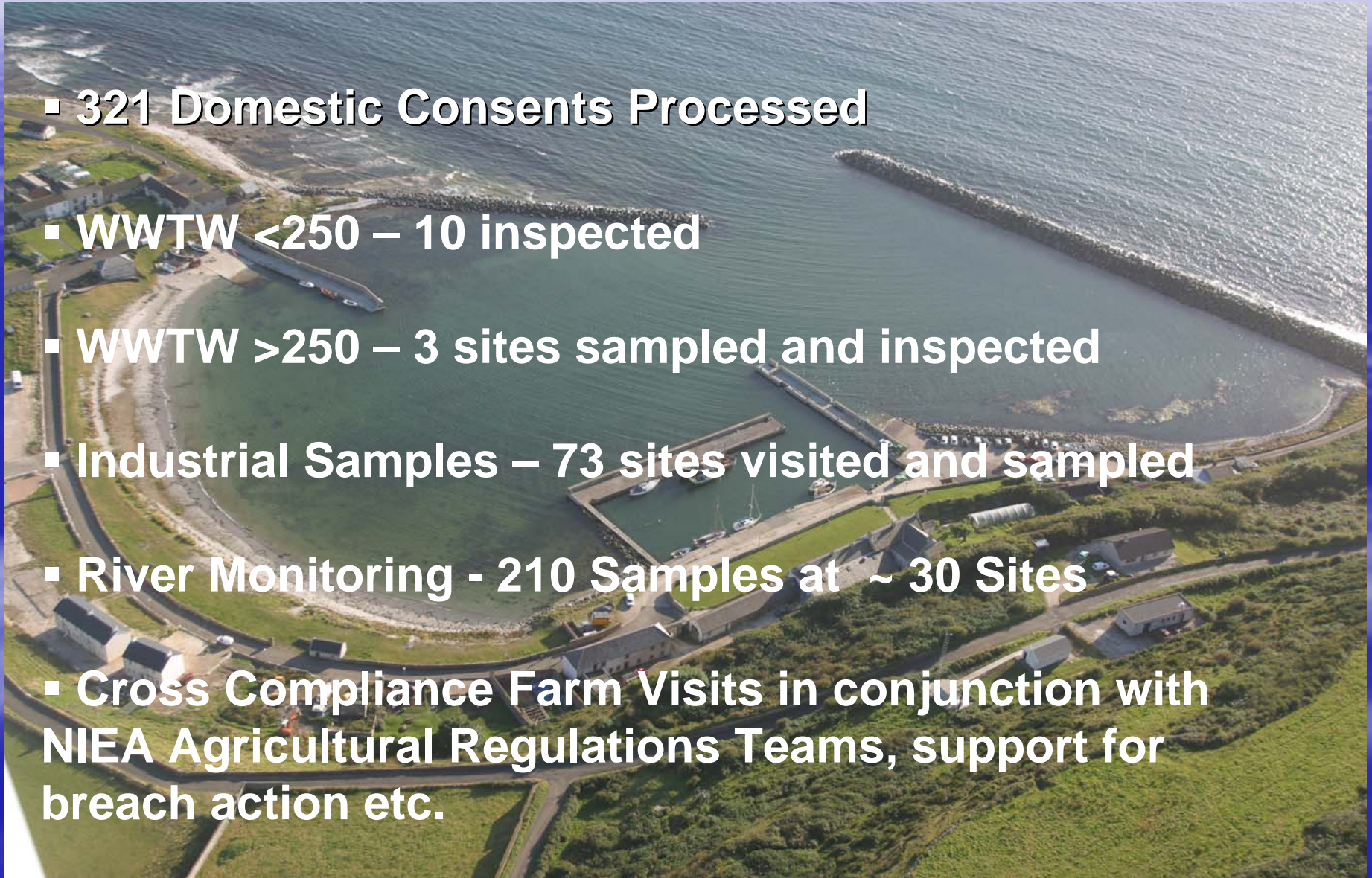
Pollution Hotline

0800 80 70 60



Work Statistics

- 321 Domestic Consents Processed
- WWTW <250 – 10 inspected
- WWTW >250 – 3 sites sampled and inspected
- Industrial Samples – 73 sites visited and sampled
- River Monitoring - 210 Samples at ~ 30 Sites
- Cross Compliance Farm Visits in conjunction with NIEA Agricultural Regulations Teams, support for breach action etc.



Pollution Incident Statistics

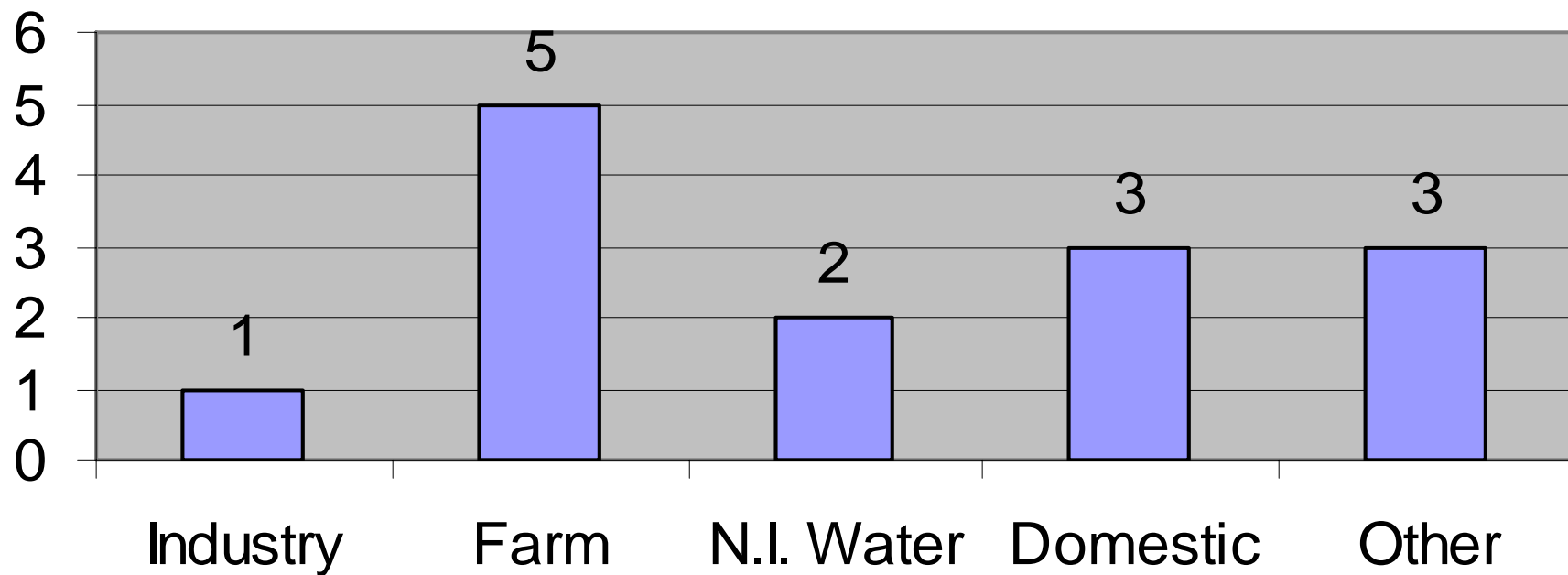
May 2010 – September 2010

- 29 Incidents Received
- 14 Substantiated

Pollution Hotline

0800 80 70 60

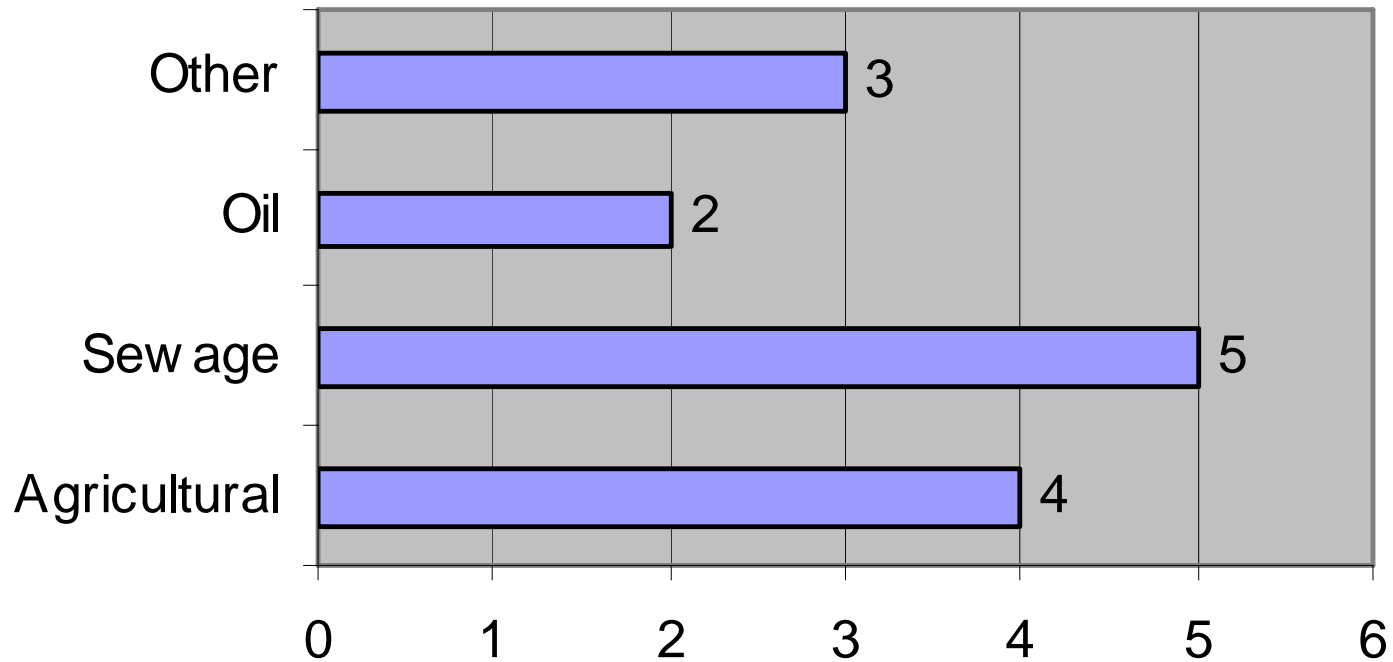
SOURCES OF POLLUTION - Bush And Glens MAY 2010 - SEPTEMBER 2010



Pollution Hotline

0800 80 70 60

CATEGORIES OF POLLUTION - Bush and Glens MAY 2010 - SEPTEMBER 2010



Pollution Hotline

0800 80 70 60



Northern Ireland
Environment
Agency

Incident Severity

- 5x Medium Severity Incidents
3 Sewage Related & 1 Farm & 1 Oil

- 1 NIWL failure – repaired by NIWL – Warning Letter issued
- 1 Stat Sample on industrial premises – limits met -NFA
- 2 Stat Sample from farm – cases being put together presently
- 1 Oil spill in Ballycastle – Prosecution file being put together
- 1 previous oil spill (Feb) from garage – Cost Recovery invoice has been sent
~ £3000

All Medium+ Severity Incidents are Cost recoverable where we can identify the polluter – Costs can be many £000s in e.g. a severe oil spill

Pollution Hotline

0800 80 70 60

Recent and Ongoing Enforcement Action

- Statutory Sample taken at a farm in the Glens with a view to prosecution. This farmer will also be breached under cross compliance.
- Agency is presently involved in enforcement action against Operators of a Trade Premises for consent non-compliance
- Agency has had a successful outcome in court against a potato processing firm in the Ballycastle area for pollution of a small watercourse. A £500 fine was levied with £200 in costs.
- One failure of a NIWL asset. Immediate remedial action by NIW and enforcement action taken in the form of a warning letter.

Pollution Hotline

0800 80 70 60

Pollution Incidents we deal with



004



What's Ahead

- Ongoing training events and exercises for all staff
- Continued programme of Sampling, Proactive visits, Surveys as required
- Continued liaison with all stakeholders – CSG Meetings, LMA Work and others

Pollution Hotline

0800 80 70 60

An aerial photograph of a coastal town. The foreground is dominated by lush green fields, divided into sections by stone walls. A dirt road winds through the fields towards the coast. In the middle ground, a cluster of buildings, including a prominent white church with a steeple, is situated on a slight rise. The coastline is rugged, with dark, jagged rocks protruding into the deep blue sea. White-capped waves are breaking against the rocks, creating a stark contrast with the dark water. The sky is a clear, vibrant blue. The text "Thanks for your attention" is overlaid in the center of the image in a white, sans-serif font with a thin black outline.

Thanks for your attention