

Invertebrate Monitoring

Finds and Falls: A Year of Discovery



Objectives

- To assess the status of the Invertebrate Assemblage of 74 ASSIs using replicable methods (Common Standards Monitoring)
- To reassess the baseline for future surveys
- To make management recommendations



The Team

- Mark Telfer
- Roy Anderson
- Garth Foster
- Derek Lott
- Keith Alexander
- Martin Drake
- Ian Dawson
- Paul Waring
- Vincent McLoughlin
- Ted Rolston
- Kenny Murphy
- Maurice Hughes
- Clive Mellon
- Dave Allen

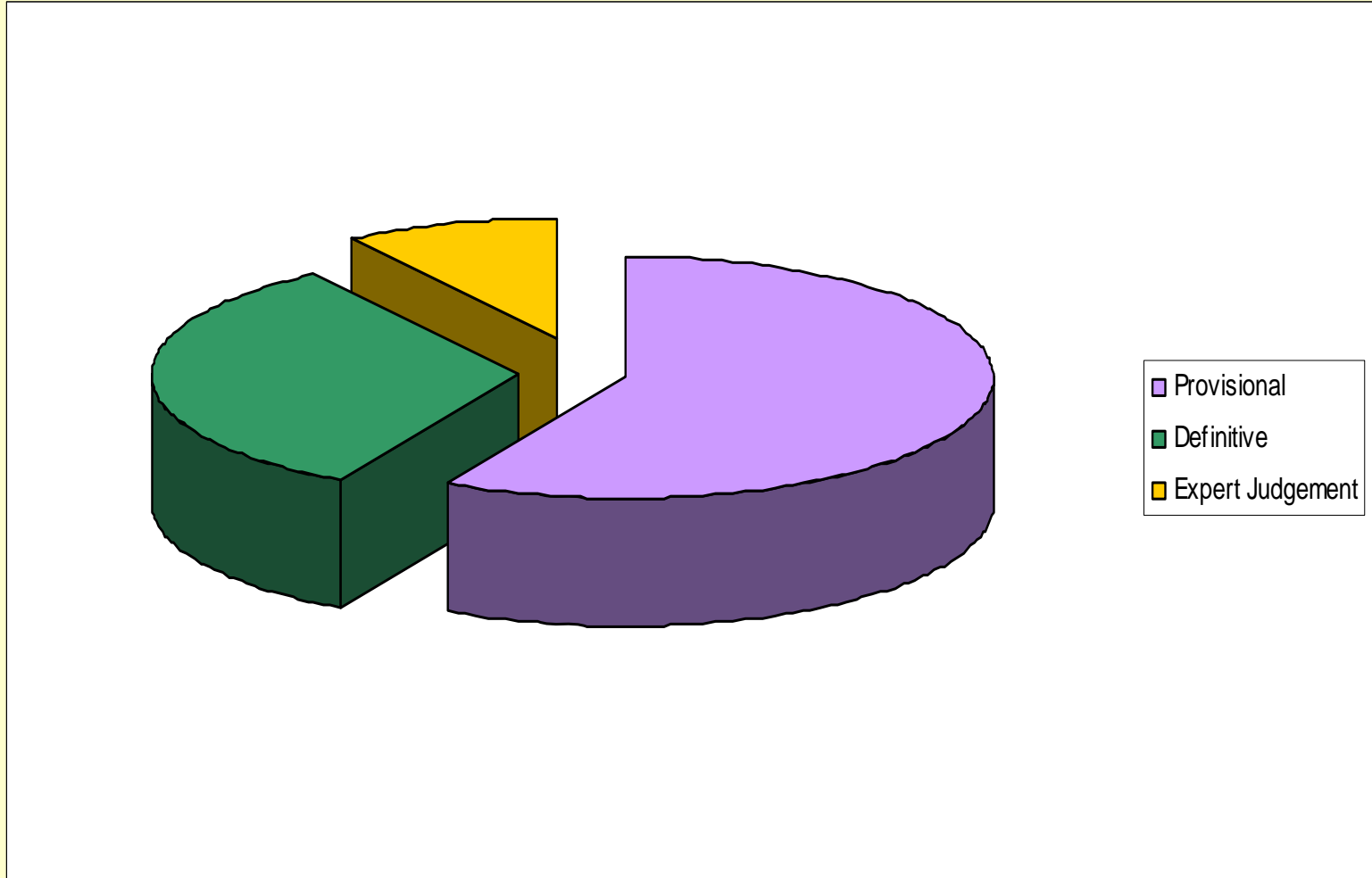


The Findings So Far

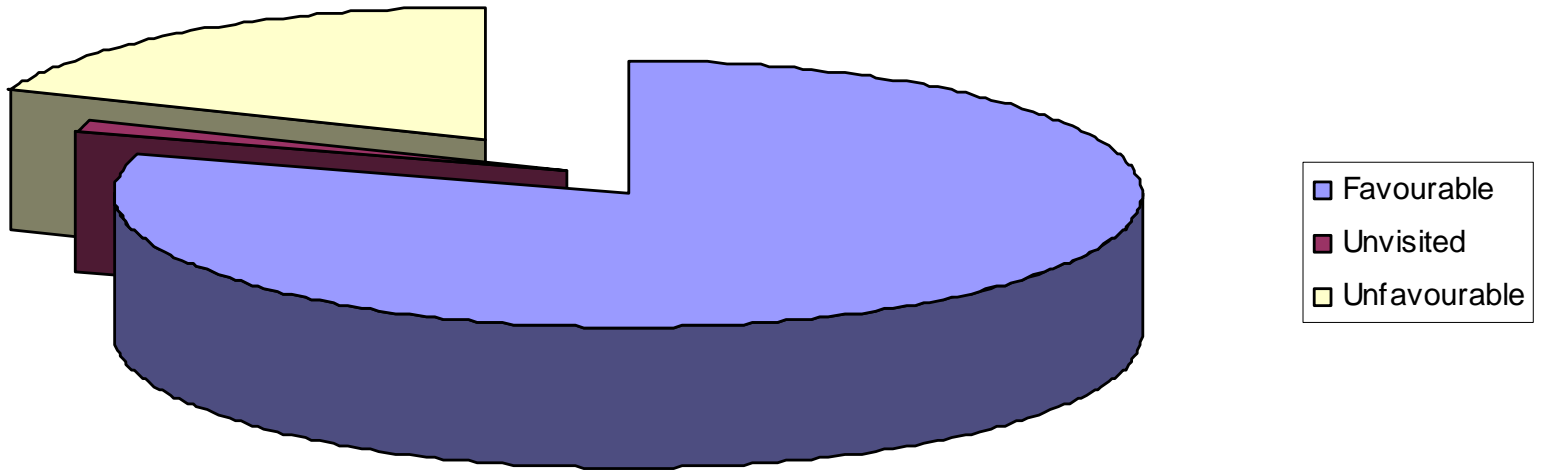
- Still another year to go
- Findings on many sites still provisional
- Some identifications not yet completed
- More field visits planned
- Preliminary Condition Assessments made



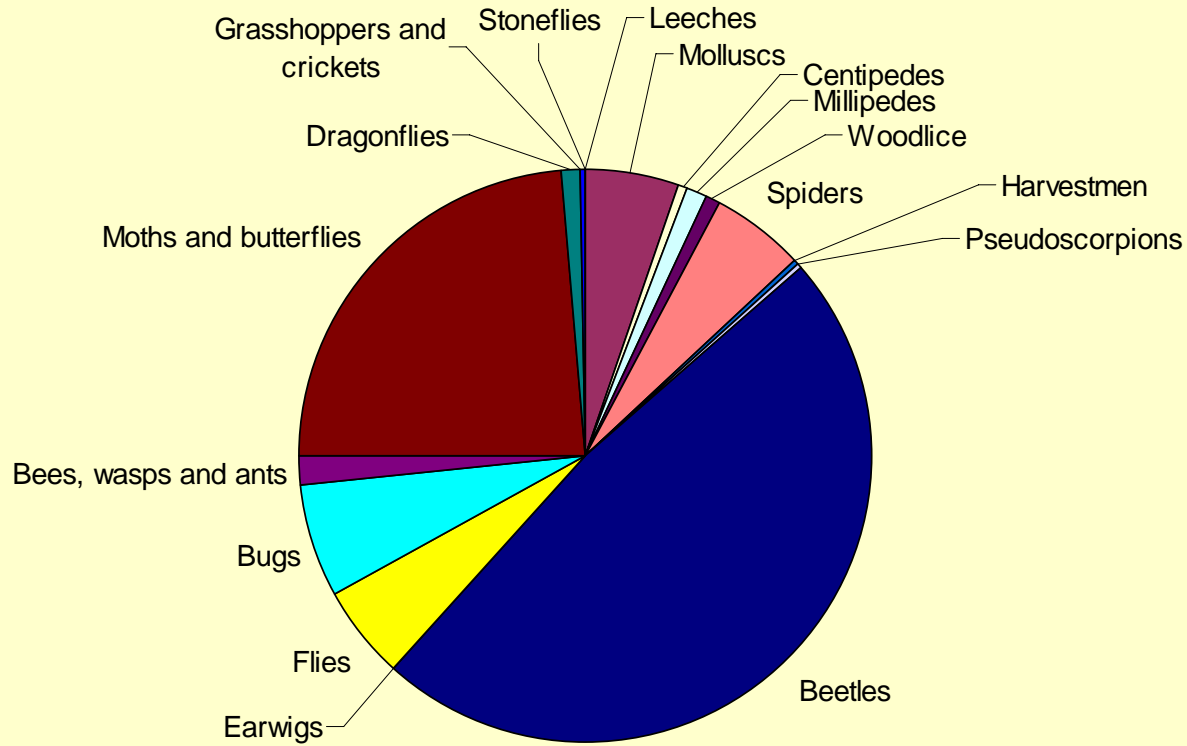
Preliminary Condition Assessment of Invert Assemblages



Preliminary Condition Assessment of Invert Assemblages



Breakdown by Taxa



Rarer Species

National Status (UK)	No. of taxa recorded
RDB1	5
pRDB1	1
RDB2	4
RDB3	9
RDBK	4
Na	7
Nb	75
N	18
TOTAL	123



Some of the Best Finds

A Personal View



Lepidoptera

- Argent and Sable
- UK Priority Species
- Last record 1999
- Only adults ever recorded in NI



Argent and Sable

- Larval search
- Four sites chosen with previous data or potential habitat
- Over 24 man hours searching
- Success!
- Over thirty spinnings in West Fermanagh Scarplands ASSI



Argent and Sable

- Some lessons....
- Other creatures spinings very similar
- Spiders
- Tortrix moths
- Need to open to confirm
- Well grown larva

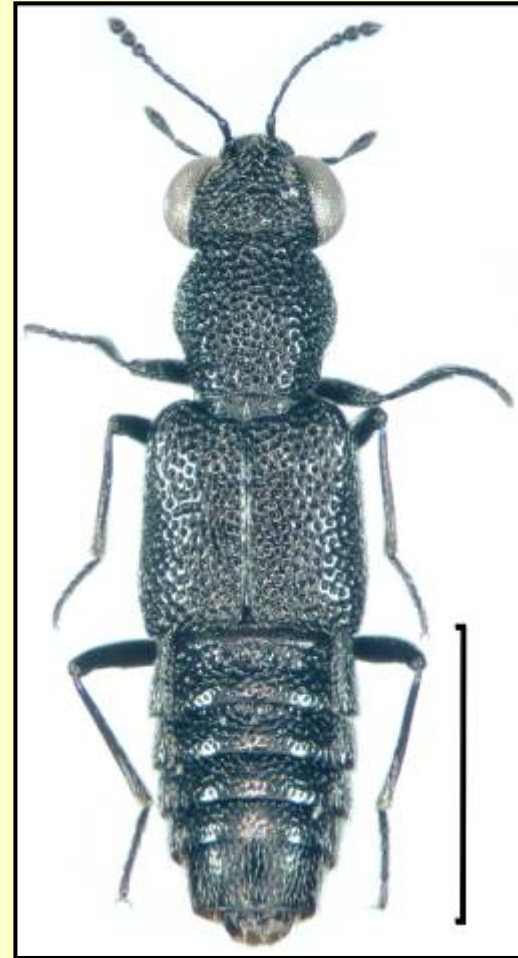


***Stenus atratulus* Erichson** **(*Staphylinidae*)**



Stenus atratulus Erichson (*Staphylinidae*)

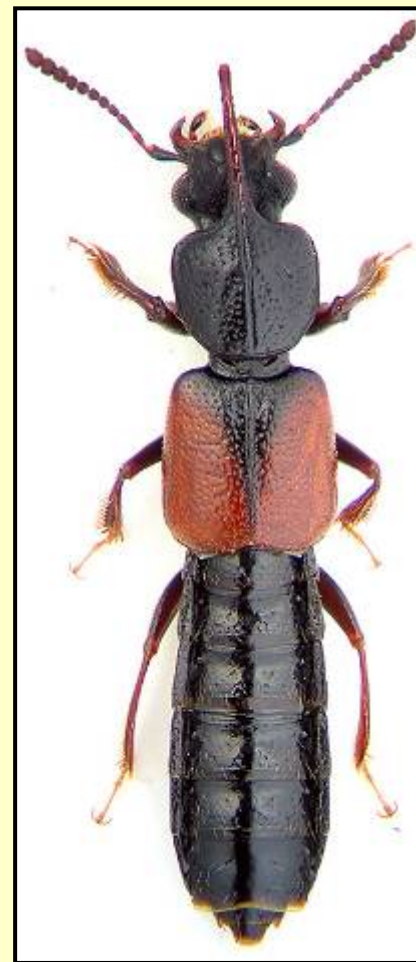
- New to Ireland
- Single male found in littoral habitat
- Nationally Scarce in GB
- Probably over-looked?



***Bledius spectabilis* Kraatz**

(*Staphylinidae*)

- New to Ireland
- Found at Murlough ASSI
– beach habitat
- Very large colony with
possibly up to a million
individuals!
- Problematic identification
with *B. limicola*





<i>limicola</i>	<i>spectabilis</i>
<p>Smaller aedeagus (lower photos are to same scale). Median lobe a little narrower, slightly narrower in the middle and broadening before apex. Parameres more strongly sinuate. In ventral view, small differences in the bases of the parameres can be seen.</p>	<p>Larger aedeagus. Median lobe a little broader, straighter-sided and more evenly rounded at apex. Parameres more weakly sinuate. In ventral view, small differences in the bases of the parameres can be seen.</p>

Mycetophagus multipunctatus

[Mycetophagidae – hairy fungus beetles]

- New genus and species to Ireland
- Found at Lough Neagh ASSI – Rea's Wood SAC



Byrrhus arietinus [Byrrhidae – pill beetles]



Byrrhus arietinus [Byrrhidae – pill beetles]

- Previously suspected as present in Ireland but no males
- Find came at some cost.....
- Found on Slieve Donard – Eastern Mourne ASSI



Dyschirius obscurus [Carabidae – ground beetles]

- In GBI resident only at Lough Neagh
- Known from eleven sites
- Sandy beach specialist



Typhaeus typhoeus [Scarabaeidae – minotaur beetle]

- New site at Bloody Bridge – E Mournes ASSI

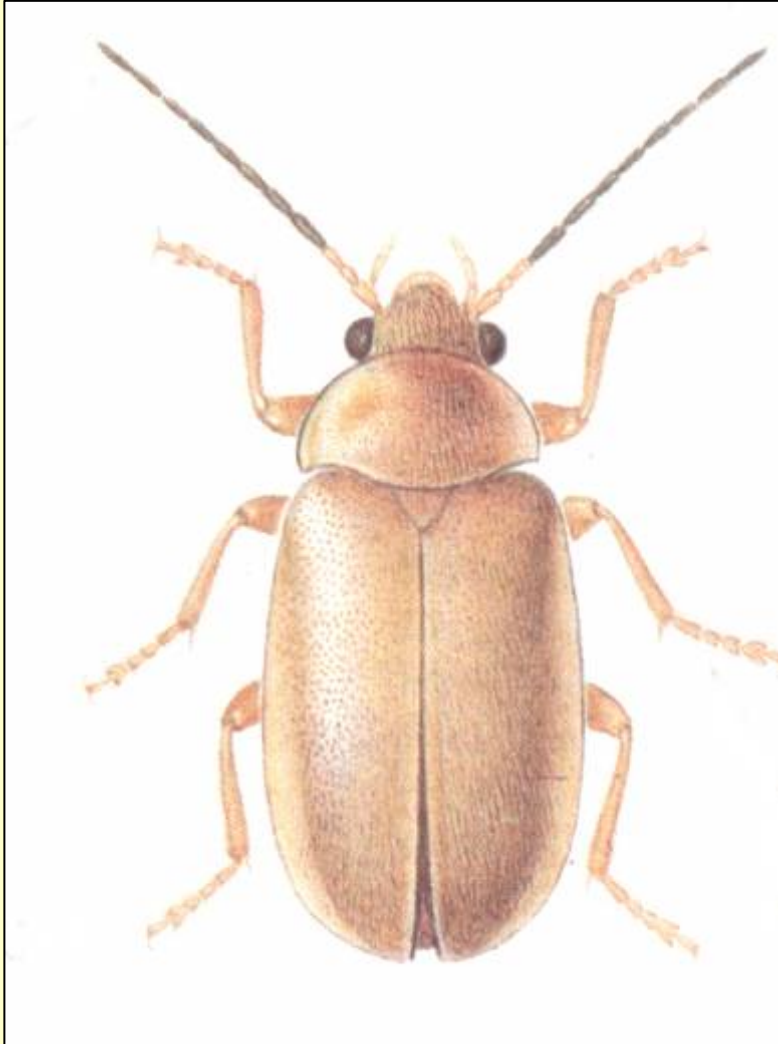


Gyrinus natator – Shady Whirligig

- NI SoCC
- Extinct in GB
- Found on 5 ASSIs
- Including Montiaghs ASSI



Cyphon kongsbergensis A Marsh Beetle



- One Irish record from Mayo
- Named after a flimsy crown-like structure in the male genitalia
- This is clamped by the female “crusher” during [terminal!] copulation
- Found in boreal peat cuttings and acid swamps

Cyphon kongsbergensis A Marsh Beetle

- Discovered at Tullyloughs, Pettigoe Plateau ASSI
- New for NI



Liopterus haemorrhoidalis - The Piles Beetle

- New for NI
- Found at Lackan Bog ASSI



Carorita limnaea (Linyphiidae)- Money Spiders

- Tiny!
- RDB1
- In Ireland only previously recorded from Westmeath (once)
- In UK – Cheshire & Shropshire
- Local in Europe
- Now Drumlougher & Loughaveely



Some Preliminary Conclusions

- The Fen sites were generally of a very high quality for invertebrates – some of the best in the UK?
- A Favourable Invertebrate Assemblage does not necessarily equate to Favourable habitats!
- Still a lot more to discover.....





Carabus clatratus