



# Water Pollution Incidents and Enforcement 2010

Annual Report



## **Water Pollution Incidents and Enforcement 2010**

This web based report presents statistics relating to water pollution incidents throughout Northern Ireland investigated by, or on behalf of, the Northern Ireland Environment Agency during 2010. NIEA responded to 2080 reports of water pollution in 2010, a decrease of 3.3% from 2009. This equates to approximately 6 investigations per day. NIEA substantiated (confirmed) that 1237 incidents, 59.5% of those reported, had an impact on the water quality of the receiving waterway.

Pollution incidents are classified by Source (where the pollution originates), Category (the type of pollution identified), Cause (why the incident occurred) and Severity (the environmental impact of the pollution).

By Source, in 2010 *Farming* accounted for the largest proportion of substantiated incidents investigated by NIEA (23.9%), followed by *Northern Ireland Water Ltd* (21.6%), *Domestic* (18.3%) and *Industry* (18.3%) This is illustrated in Figure 7.

By Category, in 2010 *Sewage* (39.5%), *Agriculture* (23.1%) and *Oil* (15.1%) continued the trend from 2009, accounting for the largest proportion of pollutant types (77.7%) in respect of substantiated incidents. This is also illustrated in Figure 1.

The main Causes of substantiated water pollution incidents during 2010 were *Unknown Cause* (19.8%) and *Equipment Failure* (17.9%).

A total of 236 High and Medium severity incidents were investigated during 2010. This was an increase of 15.7% compared with 2009 figures (204). Farming was responsible for the largest number of High and Medium severity incidents in 2010 accounting for 40.3% (95 incidents). In 2010, NIEA responded to 91.9% of substantiated High and Medium Severity incidents within set time targets.

In 2010, 116 proactive pollution prevention site visits were carried out by the Pollution Prevention Team. These visits occurred at sites deemed to be at risk of causing water pollution or in relation to specific planned or on-going works in or near waterways.

As of 12 April 2011, for the incidents that occurred during 2010, NIEA has issued 42 warning letters and submitted 39 cases to the Public Prosecution Service (PPS) (formerly the Office of the Director of Public Prosecutions) with a

recommendation for prosecution. To date, 10 of these these cases have been heard in court. Other cases are being progressed with a view to submission to PPS with a recommendation for prosecution.

As of 12 April 2011, for the incidents that occurred during 2009, NIEA has issued 68 warning letters and 39 cases were submitted to the PPS with a recommendation for prosecution. To date, 24 cases have been heard in the Magistrate's Courts, with 100% resulting in convictions. Of the 24 convictions to date for pollution incidents and consent breaches detected during 2009, the total of fines so far imposed by the courts is £34,700. These fines ranged from £250 to £12,500, with an average fine of £1,445. Of the 24 convictions to date taken by NIEA under the Water (Northern Ireland) Order 1999, the *Agricultural discharges* Category accounted for (50%), with the remaining 12 (50%) made up of *Breach of Consent, Chemical, Non Agricultural Waste Discharge,, Oil, Sewage and Other* Categories. A further 15 cases are being progressed with a view to submission to PPS with a recommendation for prosecution.

The **Water Pollution Hotline (0800 80 70 60)**, continues to be promoted by NIEA, and its use has steadily increased since its launch. In 2010, 877 water pollution incidents were reported via the Hotline.

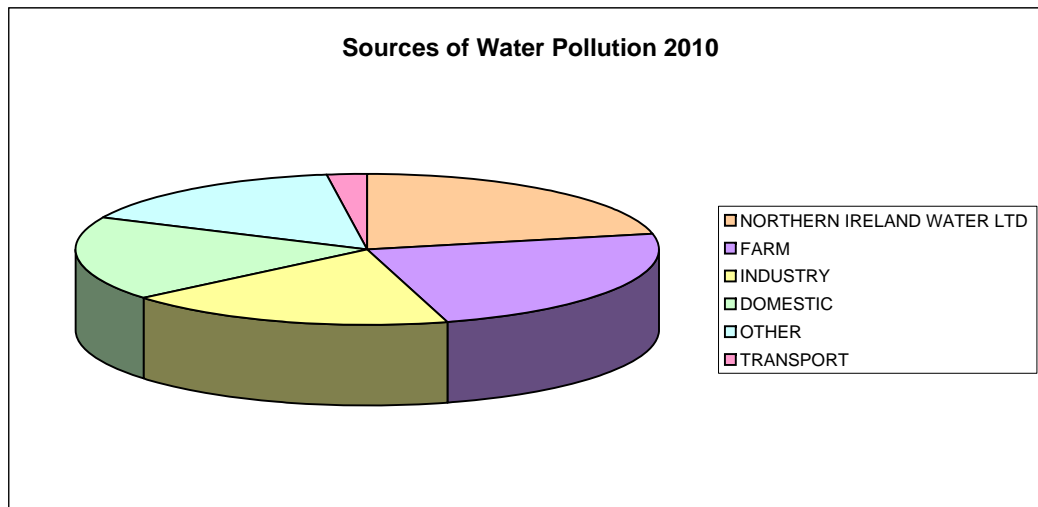
### **Water Pollution Incidents and Enforcement Statistics 2010 – How to Use this Report**

There will be no stand alone Water Pollution Incidents and Enforcement annual report for 2010. However, this workbook has been produced in order to provide the same datasets as in previous years. For further information, this document may be cross referenced with the existing 2006 Water Pollution Incidents and Enforcement report at [http://www.ni-environment.gov.uk/water/waterpollution/pol\\_respon.htm](http://www.ni-environment.gov.uk/water/waterpollution/pol_respon.htm)

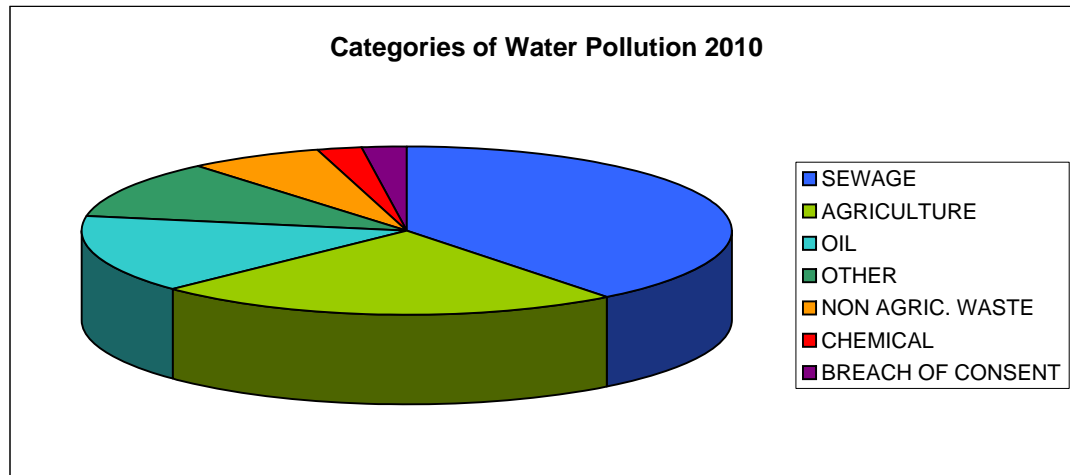
Given the inherent delay between the time that pollution incidents, where prosecution is recommended, occur and subsequent court outcome, this report provides enforcement data for incidents that occurred in 2009 and an update on the situation for incidents that occurred in 2010.

<b>Water Pollution Incidents and Enforcement 2010</b>		
<b>Click "Worksheet Number" on Left to View - Click "Return to Index" to Return to this Page</b>		
<b>Worksheet Number</b>		<b>Description</b>
<a href="#">2010_1</a>	<b>Figure A</b>	Distribution of Substantiated Pollution Incidents by Source and Category in 2010
<a href="#">2010_2</a>	<b>Table 1 and Figure 1</b>	Reports of Water Pollution Received by NIEA 2001 to 2010 and NIEA Areas for Water Pollution Incident Management
<a href="#">2010_3</a>	<b>Table 2 and Figure 5</b>	Substantiated and Unsubstantiated Water Pollution Incidents 2001 to 2010
<a href="#">2010_4</a>	<b>Figure 6</b>	Regional Distribution of Substantiated Pollution Incidents 2010
<a href="#">2010_5</a>	<b>Table 3 and Figure 7</b>	Sources of Water Pollution 2010
<a href="#">2010_6</a>	<b>Table 4 and Figure 8</b>	Regional Distribution of Pollution Incidents by Source 2010
<a href="#">2010_7</a>	<b>Table 5 and Figure 9</b>	Percentage Change in Pollution Source 2009 to 2010
<a href="#">2010_8</a>	<b>Figure 10</b>	Trend in Pollution Source 2001 to 2010
<a href="#">2010_9</a>	<b>Table 6 and Figure 11</b>	Categories of Water Pollution 2009
<a href="#">2010_10</a>	<b>Table 7 and Figure 12</b>	Regional Distribution of Pollution Incidents by Category 2010
<a href="#">2010_11</a>	<b>Table 8 and Figure 13</b>	Percentage Change in Pollutant Category 2009 to 2010
<a href="#">2010_12</a>	<b>Figure 14</b>	Trend in Pollutant Category 2001 - 2010
<a href="#">2010_13</a>	<b>Table 9 and Figure 15</b>	Cause of Pollution Incidents in 2010
<a href="#">2010_14</a>	<b>Table 10 and Figure 16</b>	Regional Distribution of Pollution Incidents by Cause in 2010
<a href="#">2010_15</a>	<b>Figure 17</b>	Trend in Pollution Incident Cause 2001 to 2010
<a href="#">2010_16</a>	<b>Table 11 and Figure 18</b>	Severity of Pollution Incidents 2010
<a href="#">2010_17</a>	<b>Table 12 and Figure 19</b>	Regional Distribution of Pollution Incidents by Severity in 2010
<a href="#">2010_18</a>	<b>Table 13 and Figure 20</b>	Severity of Pollution Incidents by Source 2010
<a href="#">2010_19</a>	<b>Table 14 and Figure 21</b>	Severity of pollution Incidents by Category 2010
<a href="#">2010_20</a>	<b>Table 15 and Figure 22</b>	Severity of Pollution Incidents by Cause 2010
<a href="#">2010_21</a>	<b>Table 16 and Figure 23</b>	Response Rate to High and Medium Severity Pollution Incidents 2010
<a href="#">2010_22</a>	<b>Table 17 and Figure 24</b>	Response Rate to High and Medium Severity Pollution Incidents 2001 to 2010
<a href="#">2010_23</a>	<b>Table 18 and Figure 25</b>	Sources of Pollution Causing FishKills in 2010
<a href="#">2010_24</a>	<b>Table 19 and Figure 26</b>	Significance of FishKills by Pollutant Source 2010
<a href="#">2010_25</a>	<b>Figure 27</b>	Trend in Pollution Source Causing FishKills 2001 to 2010
<a href="#">2010_26</a>	<b>Table 20</b>	Summary of Cases Referred to PPS for Incidents that Occurred in 2009
<a href="#">2010_27</a>	<b>Table 21</b>	Costs and Fines Imposed under the Water (NI) Order 1999, for Incidents that occurred in 2009 (As at 12 April 2011)
<a href="#">2010_28</a>	<b>Table 22</b>	Water Pollution Prosecution Cases and Warning Letters 2000 to 2009
<a href="#">2010_29</a>	<b>Figure 28</b>	Water Pollution Prosecution Cases and Warning Letters 2000 to 2009
<a href="#">2010_30</a>	<b>Table 23 and Figure 29</b>	Number of Proactive Pollution Prevention Inspections by Sector 2010
<i>(See 2006 Water Pollution Incidents and Enforcement Report for Figures 2 to 4)</i>		

**Figure A: Distribution of Substantiated Pollution Incidents by Source and Category in 2010**



[Return to Index](#)



**Table 1: Reports of Water Pollution Received by NIEA 2001 to 2010**

Water pollution reports received by:							
Year	WPH (Normal Hours)	WPH (After Hours)	Total WPH	NIEA direct (Normal Hours)	Regional Offices direct (Normal Hours)	FCB / LA direct (Normal Hours)	Total reports received by NIEA
2001	436	279	715	333	1034	452	2534
2002	436	292	728	277	1039	419	2463
2003	476	292	768	358	977	396	2499
2004	552	284	836	324	787	260	2207
2005	641	301	942	265	789	187	2183
2006	651	294	945	237	726	173	2081
2007	625	296	921	186	1135	49	2291
2008	669	281	950	287	1007	0	2244
2009	661	232	893	192	1067	0	2152
2010	659	218	877	159	1044	0	2080

[Return to Index](#)

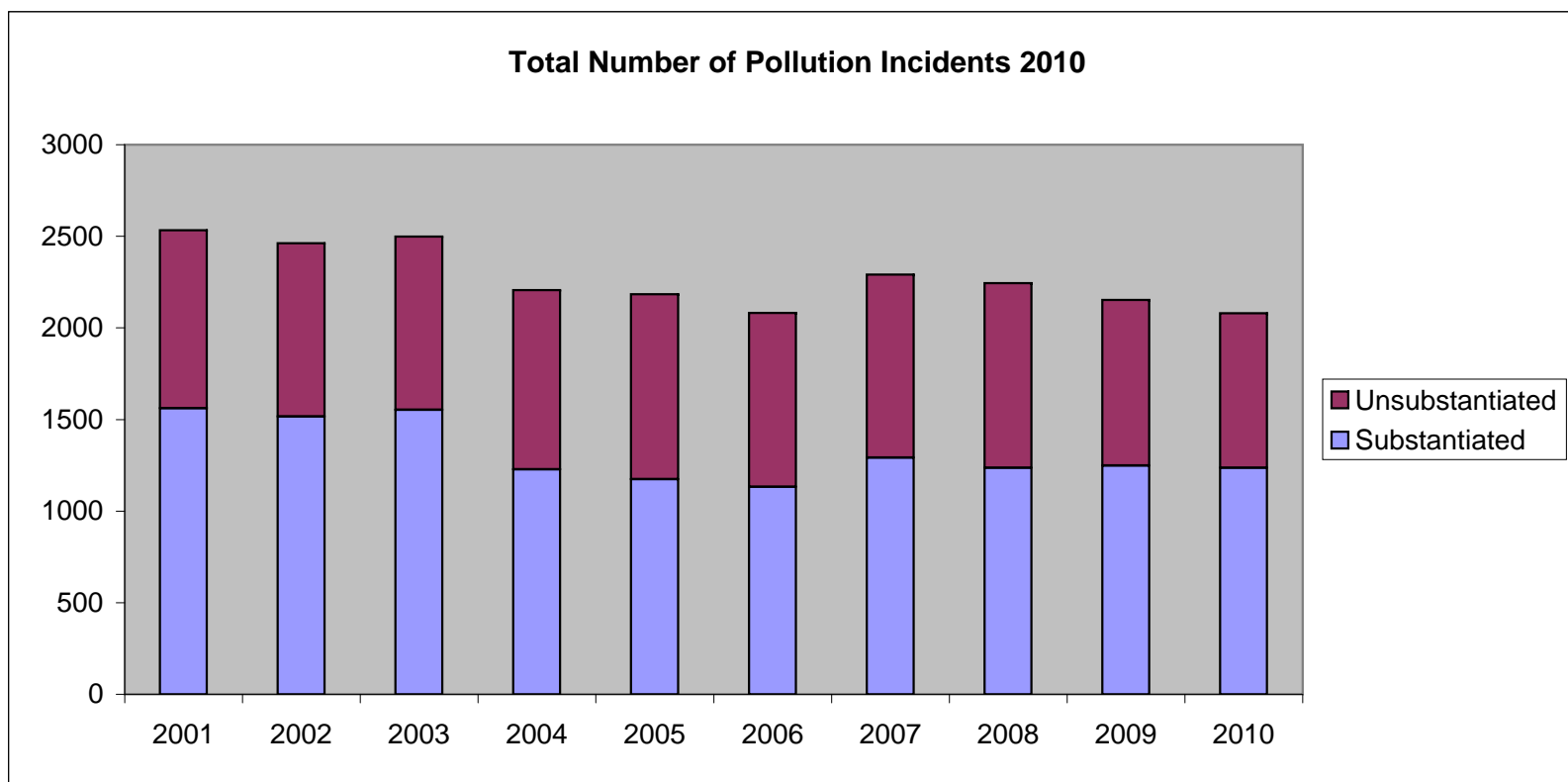
**Figure 1: NIEA Areas for Water Pollution Incident Management**

© Crown copyright and database rights OSNI EMOU206.2

**Table 2: Substantiated and Unsubstantiated Water Pollution Incidents 2001 to 2010**

	2001	2002	2003	2004	2005	2006	2007	2008	2009	2010
<b>Substantiated</b>	1561	1517	1552	1227	1174	1133	1292	1237	1248	1237
<b>Unsubstantiated</b>	973	946	947	980	1009	948	999	1007	904	843
<b>Total</b>	<b>2534</b>	<b>2463</b>	<b>2499</b>	<b>2207</b>	<b>2183</b>	<b>2081</b>	<b>2291</b>	<b>2244</b>	<b>2152</b>	<b>2080</b>

**Figure 5: Total Number of Pollution Incidents Reported 2001 to 2010**



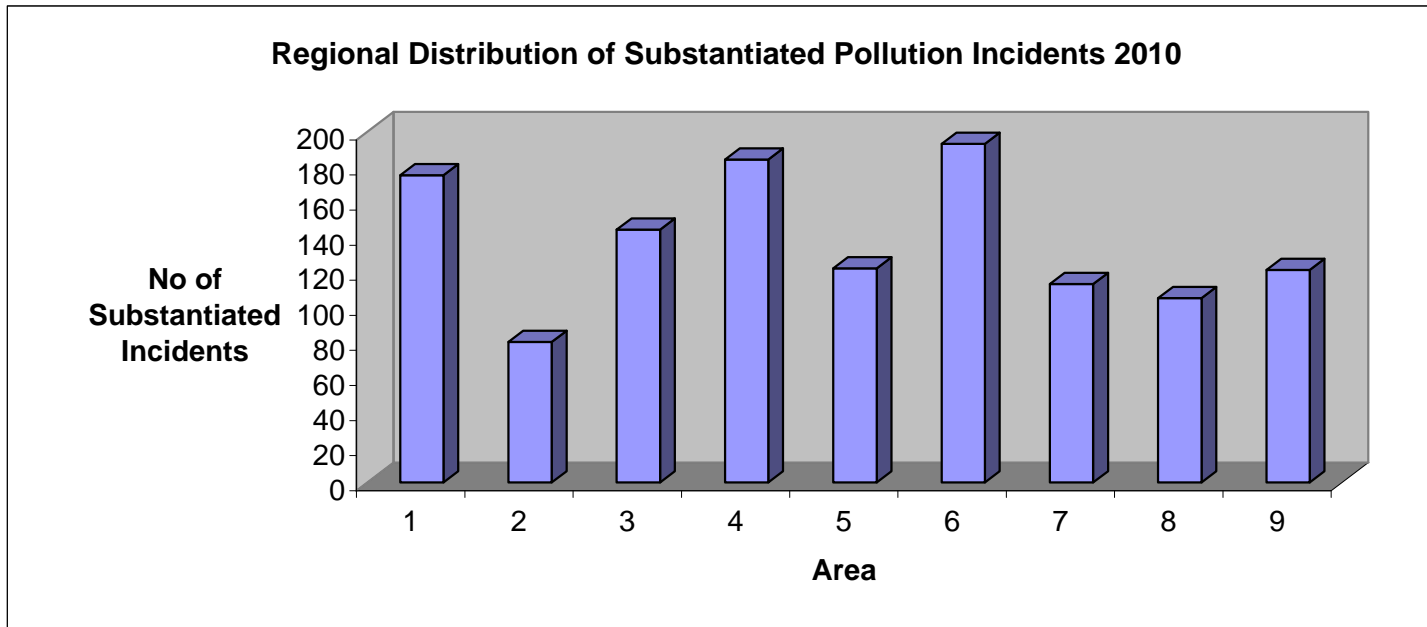
[Return to Index](#)

**Regional Distribution of Substantiated Pollution Incidents 2010**

Area	Total substantiated incidents
1	175
2	80
3	144
4	184
5	122
6	193
7	113
8	105
9	121
<b>Total</b>	<b>1237</b>

[Return to Index](#)

**Figure 6: Regional Distribution of Substantiated Pollution Incidents 2010**

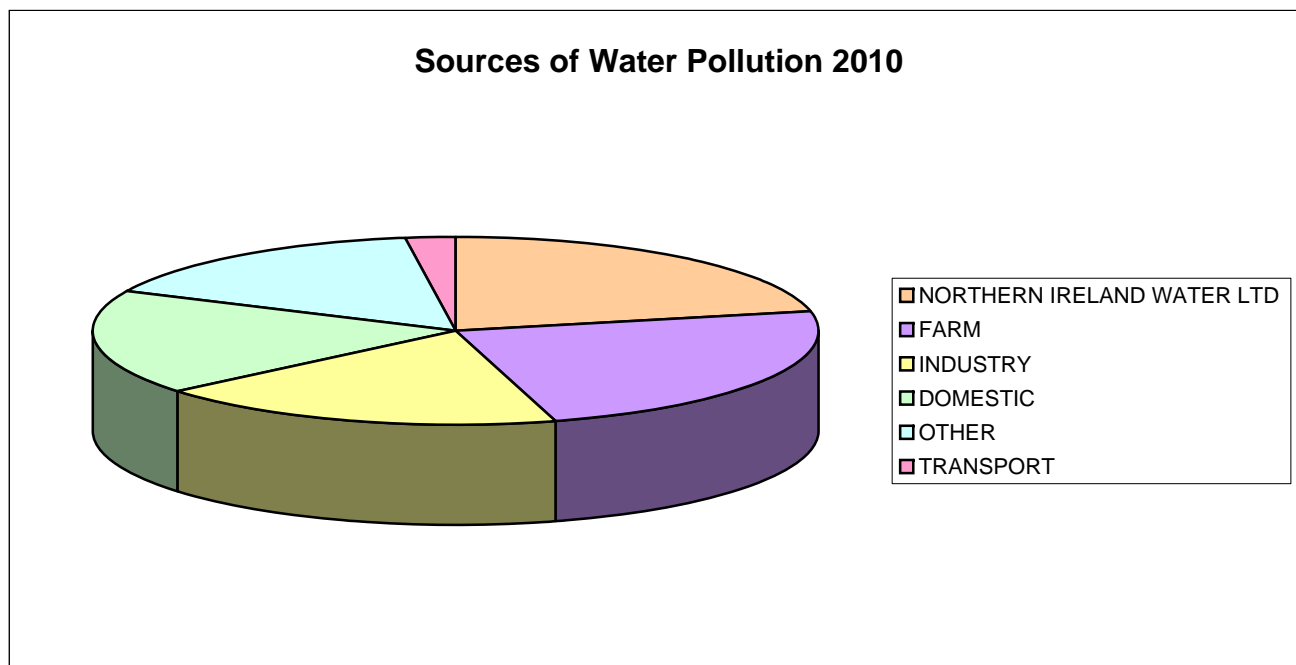


**Table 3: Sources of Water Pollution 2010**

[Return to Index](#)

SOURCE	Total No. of Incidents	As a % of the total
NORTHERN IRELAND WATER LTD	267	21.6%
FARM	296	23.9%
INDUSTRY	226	18.3%
DOMESTIC	226	18.3%
OTHER	196	15.8%
TRANSPORT	26	2.1%
	<b>1237</b>	<b>100%</b>

**Figure 7: Sources of Water Pollution 2010**

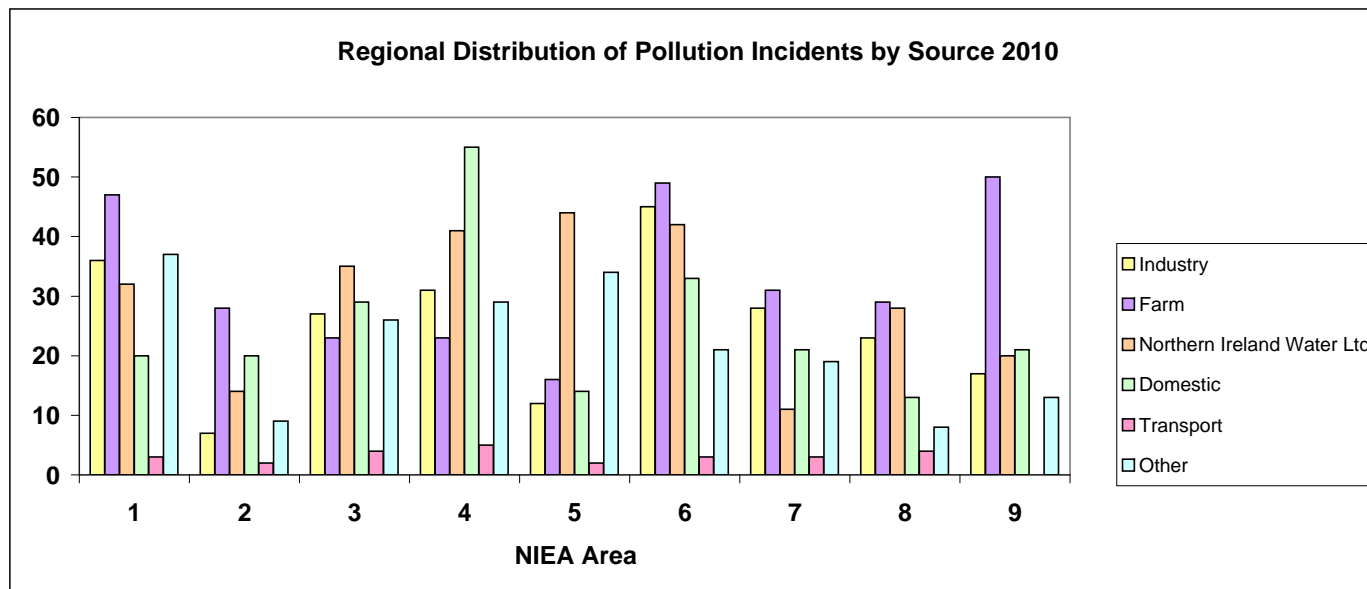


**Table 4: Regional Distribution of Pollution Incidents by Source 2010**

[Return to Index](#)

Source							
Area	Industry	Farm	Northern Ireland Water Ltd	Domestic	Transport	Other	Total
1	36	47	32	20	3	37	175
2	7	28	14	20	2	9	80
3	27	23	35	29	4	26	144
4	31	23	41	55	5	29	184
5	12	16	44	14	2	34	122
6	45	49	42	33	3	21	193
7	28	31	11	21	3	19	113
8	23	29	28	13	4	8	105
9	17	50	20	21	0	13	121
<b>Total</b>	<b>226</b>	<b>296</b>	<b>267</b>	<b>226</b>	<b>26</b>	<b>196</b>	<b>1237</b>

**Figure 8: Regional Distribution of Pollution Incidents by Source 2010**

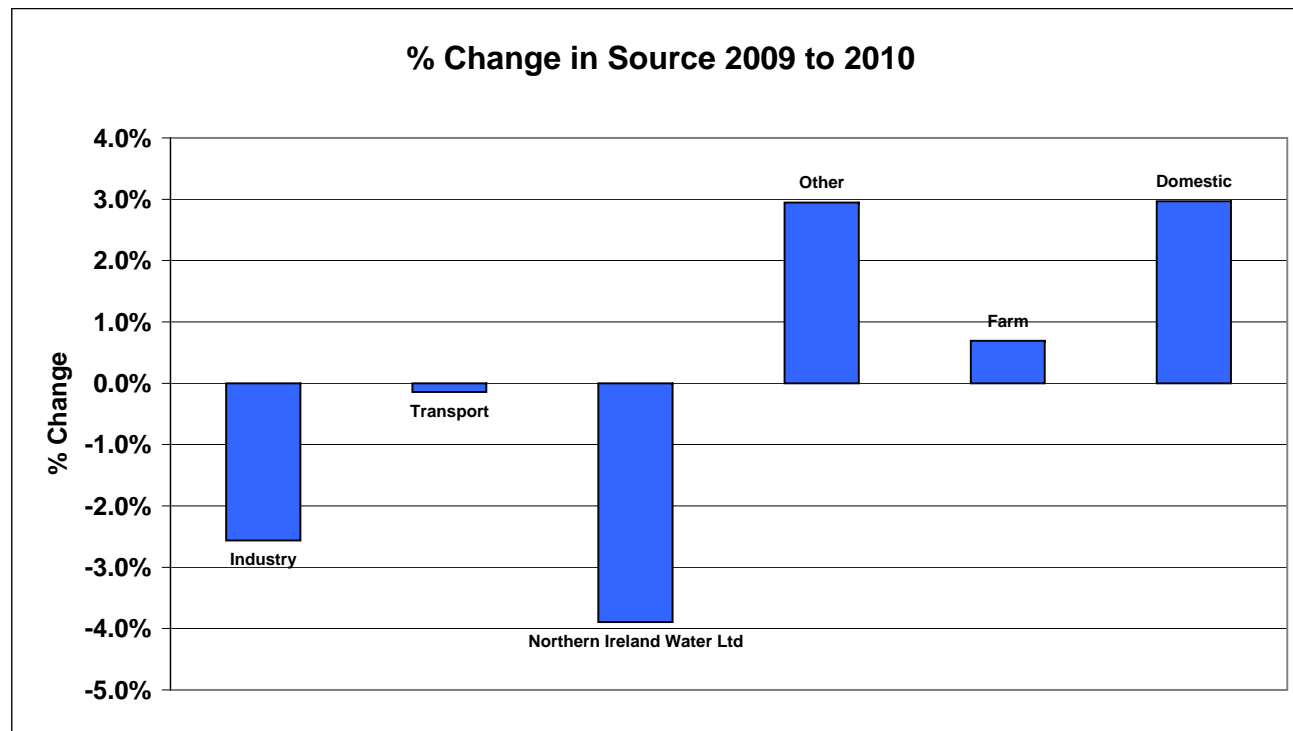


**Table 5: Percentage Change in Pollution Source 2009 to 2010**

[Return to Index](#)

Source	2009	2009	2010	2010	% Change
Industry	260	20.83%	226	18.27%	-2.6%
Transport	28	2.24%	26	2.10%	-0.1%
Northern Ireland Water Ltd	318	25.48%	267	21.58%	-3.9%
Other	161	12.90%	196	15.84%	2.9%
Farm	290	23.24%	296	23.93%	0.7%
Domestic	191	15.30%	226	18.27%	3.0%
<b>Total</b>	<b>1248</b>		<b>1237</b>		

**Figure 9: Percentage Change in Pollution Source 2009 to 2010**

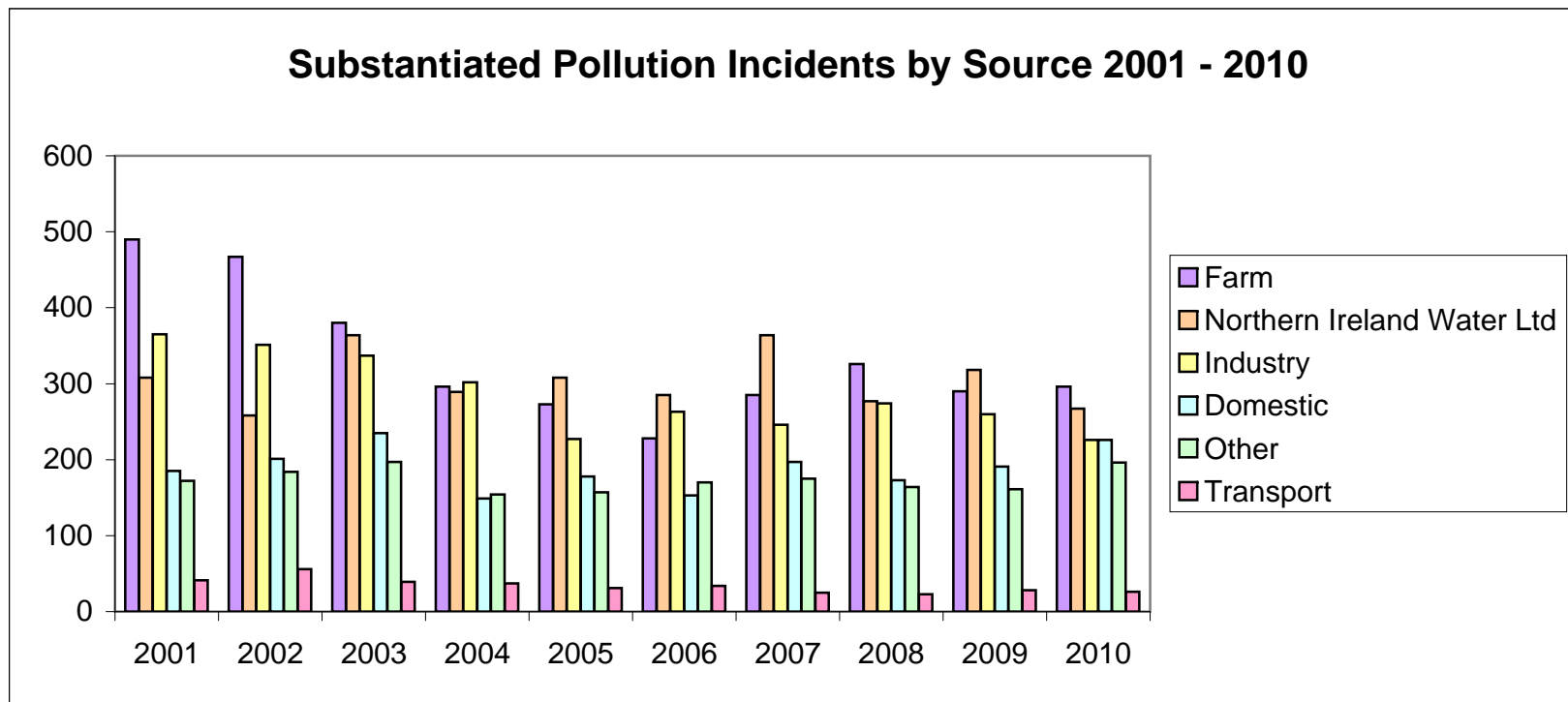


**Trend in Pollution Source 2001 to 2010**

[Return to Index](#)

	2001	2002	2003	2004	2005	2006	2007	2008	2009	2010
<b>Farm</b>	490	467	380	296	273	228	285	326	290	296
<b>Northern Ireland Water Ltd</b>	308	258	364	289	308	285	364	277	318	267
<b>Industry</b>	365	351	337	302	227	263	246	274	260	226
<b>Domestic</b>	185	201	235	149	178	153	197	173	191	226
<b>Other</b>	172	184	197	154	157	170	175	164	161	196
<b>Transport</b>	41	56	39	37	31	34	25	23	28	26
<b>Total</b>	<b>1561</b>	<b>1517</b>	<b>1552</b>	<b>1227</b>	<b>1174</b>	<b>1133</b>	<b>1292</b>	<b>1237</b>	<b>1248</b>	<b>1237</b>

**Figure 10: Trend in Pollution Source 2001 to 2010**

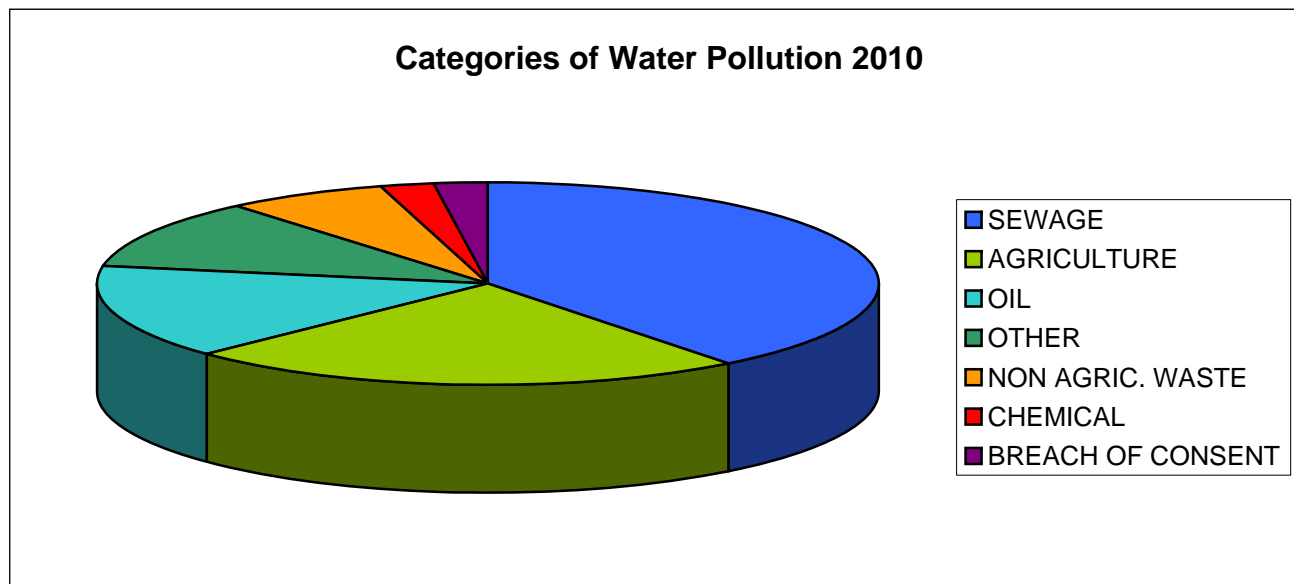


**Table 6: Categories of Water Pollution 2010**

[Return to Index](#)

CATEGORY	Total No. of Incidents	As a % of the total
SEWAGE	489	39.5%
AGRICULTURE	286	23.1%
OIL	187	15.1%
OTHER	136	11.0%
NON AGRIC. WASTE	84	6.8%
CHEMICAL	29	2.3%
BREACH OF CONSENT	26	2.1%
<b>Total</b>	<b>1237</b>	<b>100%</b>

**Figure 11: Categories of Water Pollution 2010**

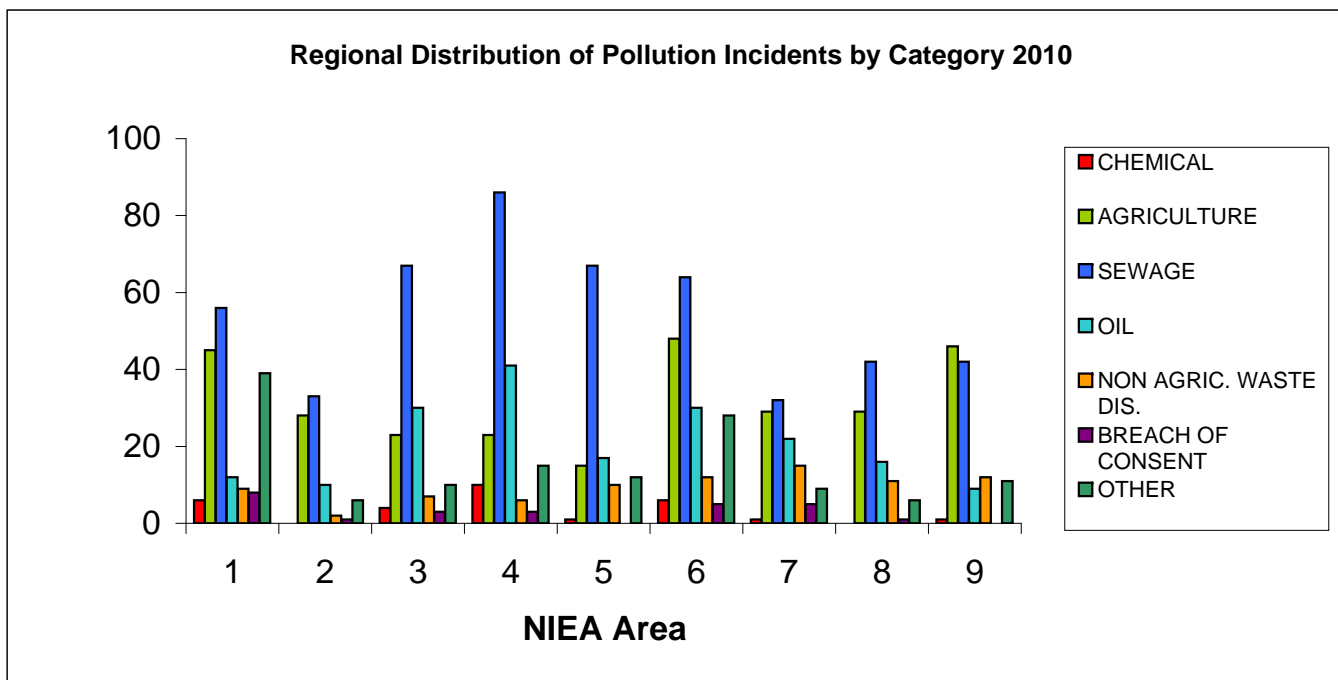


**Table 7: Regional Distribution of Pollution Incidents by Category 2010**

[Return to Index](#)

Category								
Area	CHEMICAL	AGRICULTURE	SEWAGE	OIL	NON AGRIC. WASTE DIS.	BREACH OF CONSENT	OTHER	Total
1	6	45	56	12	9	8	39	175
2	0	28	33	10	2	1	6	80
3	4	23	67	30	7	3	10	144
4	10	23	86	41	6	3	15	184
5	1	15	67	17	10	0	12	122
6	6	48	64	30	12	5	28	193
7	1	29	32	22	15	5	9	113
8	0	29	42	16	11	1	6	105
9	1	46	42	9	12	0	11	121
	29	286	489	187	84	26	136	1237

**Figure 12: Regional Distribution of Pollution Incidents by Category 2010**

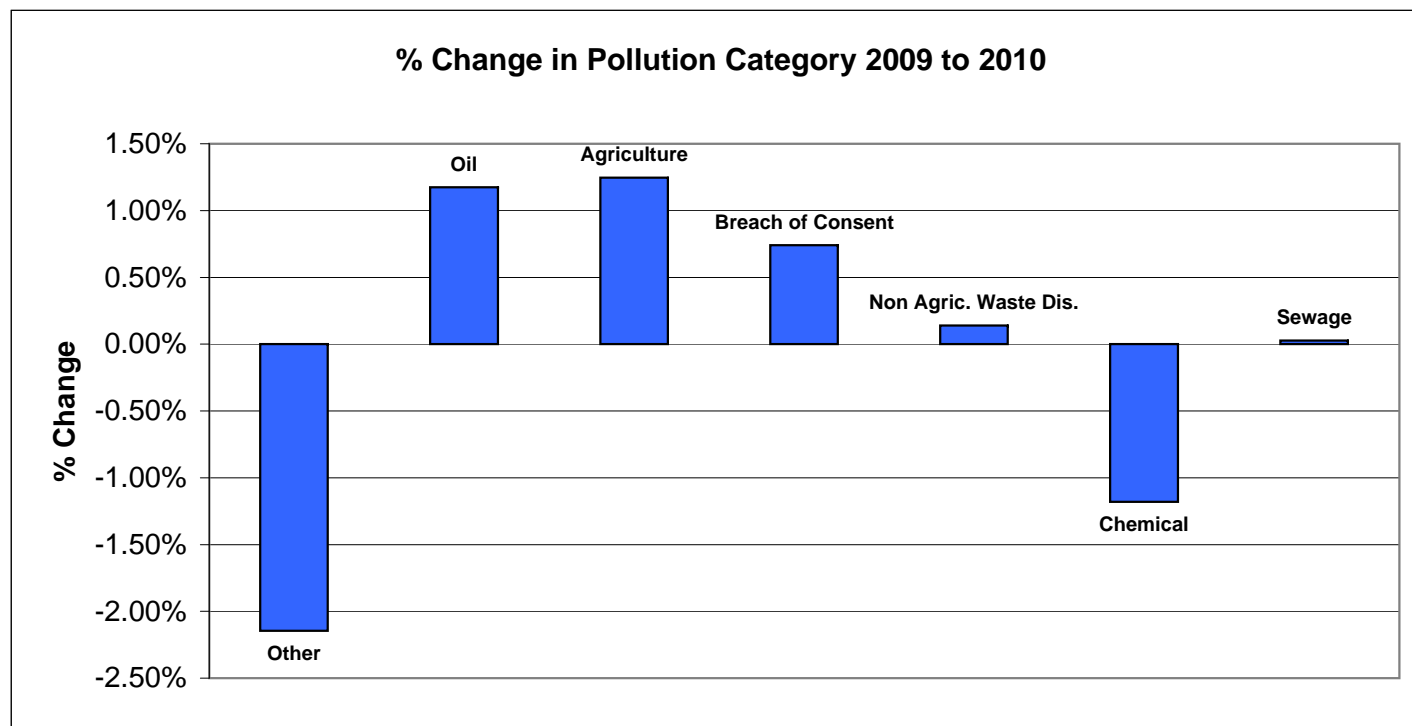


**Table 8: Percentage Change in Pollutant Category 2009 to 2010**

[Return to Index](#)

Category	2009	2009	2010	2010	Overall % Change
Other	164	13.14%	136	10.99%	-2.15%
Oil	174	13.94%	187	15.12%	1.17%
Agriculture	273	21.88%	286	23.12%	1.25%
Breach of Consent	17	1.36%	26	2.10%	0.74%
Non Agric. Waste Dis.	83	6.65%	84	6.79%	0.14%
Chemical	44	3.53%	29	2.34%	-1.18%
Sewage	493	39.50%	489	39.53%	0.03%
<b>Total</b>	<b>1248</b>		<b>1237</b>		

**Figure 13: Percentage Change in Pollutant Category 2009 to 2010**

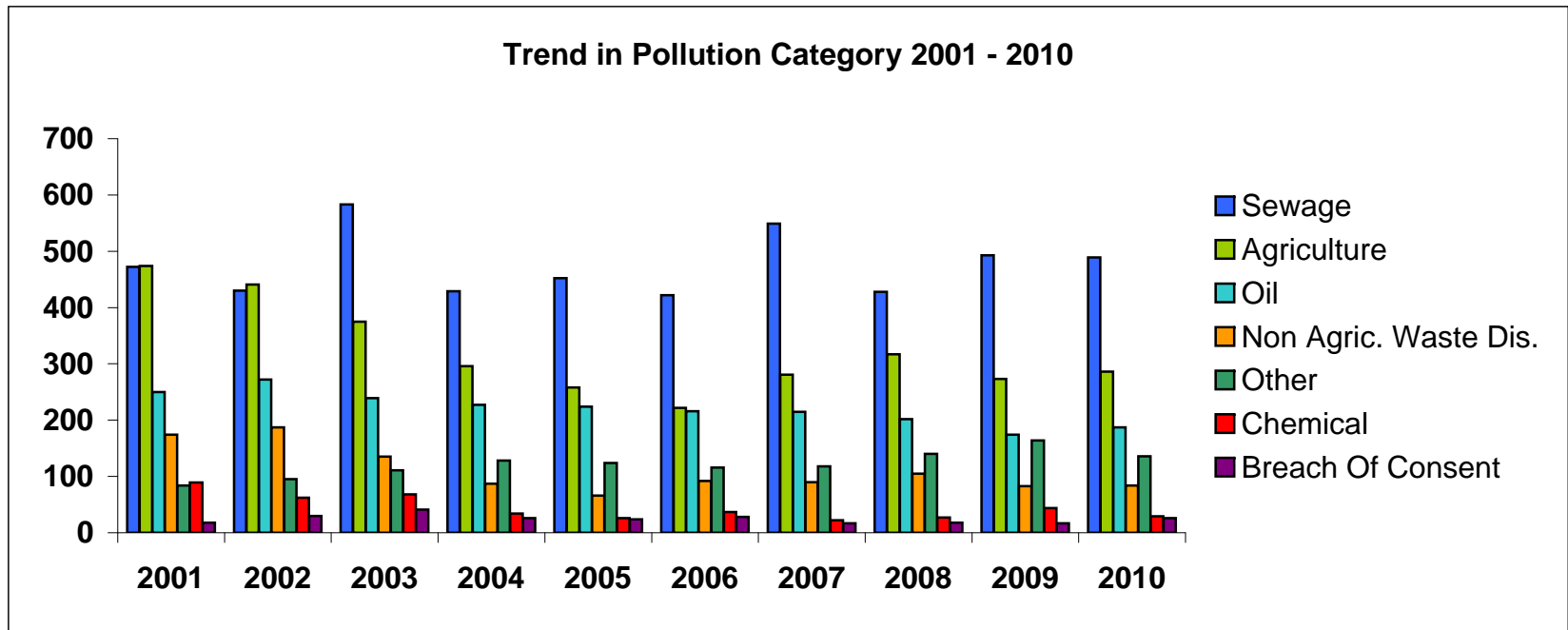


**Trend in Pollutant Category 2001 - 2010**

[Return to Index](#)

	2001	2002	2003	2004	2005	2006	2007	2008	2009	2010
<b>Sewage</b>	472	430	583	429	452	422	549	428	493	489
<b>Agriculture</b>	474	441	375	296	258	222	281	317	273	286
<b>Oil</b>	250	272	239	227	224	216	215	202	174	187
<b>Non Agric. Waste Dis.</b>	174	187	135	87	66	92	90	105	83	84
<b>Other</b>	84	95	111	128	124	116	118	140	164	136
<b>Chemical</b>	89	62	68	34	26	37	22	27	44	29
<b>Breach Of Consent</b>	18	30	41	26	24	28	17	18	17	26
<b>Total</b>	<b>1561</b>	<b>1517</b>	<b>1552</b>	<b>1227</b>	<b>1174</b>	<b>1133</b>	<b>1292</b>	<b>1237</b>	<b>1248</b>	<b>1237</b>

**Figure 14: Trend in Pollutant Category 2001 - 2010**

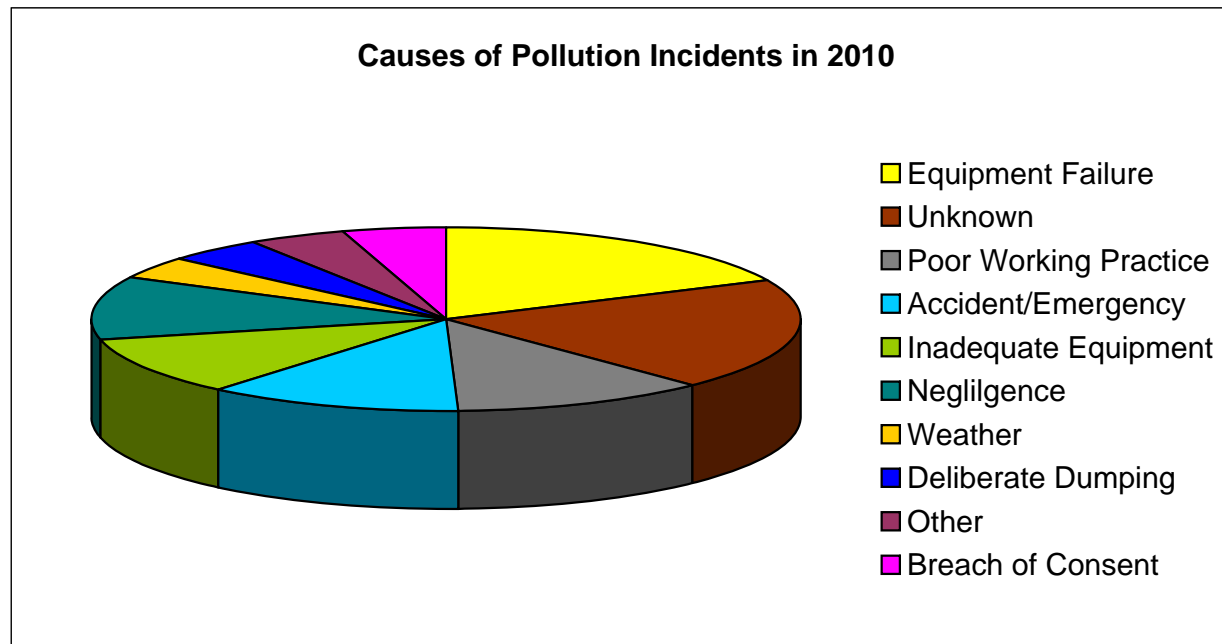


**Table 9: Cause of Pollution Incidents in 2010**

[Return to Index](#)

CAUSE	Total No. of Incidents	As a % of the total
Equipment Failure	222	17.9%
Unknown	245	19.8%
Poor Working Practice	143	11.6%
Accident/Emergency	147	11.9%
Inadequate Equipment	127	10.3%
Negligence	135	10.9%
Weather	48	3.9%
Deliberate Dumping	57	4.6%
Other	55	4.4%
Breach of Consent	58	4.7%
	<b>1237</b>	<b>100%</b>

**Figure 15: Cause of Pollution Incidents in 2010**

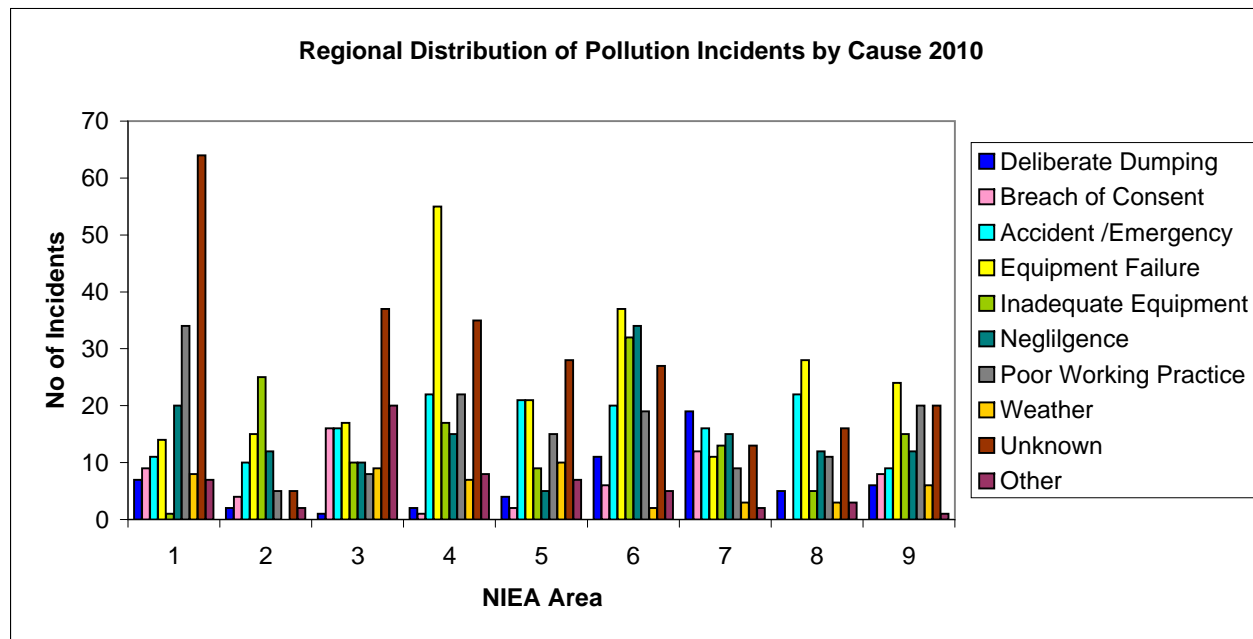


**Table 10: Regional Distribution of Pollution Incidents by Cause in 2010**

[Return to Index](#)

Area	Deliberate Dumping	Breach of Consent	Accident /Emergency	Equipment Failure	Inadequate Equipment	Negligence	Poor Working Practice	Weather	Unknown	Other	Total
1	7	9	11	14	1	20	34	8	64	7	175
2	2	4	10	15	25	12	5	0	5	2	80
3	1	16	16	17	10	10	8	9	37	20	144
4	2	1	22	55	17	15	22	7	35	8	184
5	4	2	21	21	9	5	15	10	28	7	122
6	11	6	20	37	32	34	19	2	27	5	193
7	19	12	16	11	13	15	9	3	13	2	113
8	5	0	22	28	5	12	11	3	16	3	105
9	6	8	9	24	15	12	20	6	20	1	121
<b>Total</b>	<b>57</b>	<b>58</b>	<b>147</b>	<b>222</b>	<b>127</b>	<b>135</b>	<b>143</b>	<b>48</b>	<b>245</b>	<b>55</b>	<b>1237</b>

**Figure 16: Regional Distribution of Pollution Incidents by Cause in 2010**

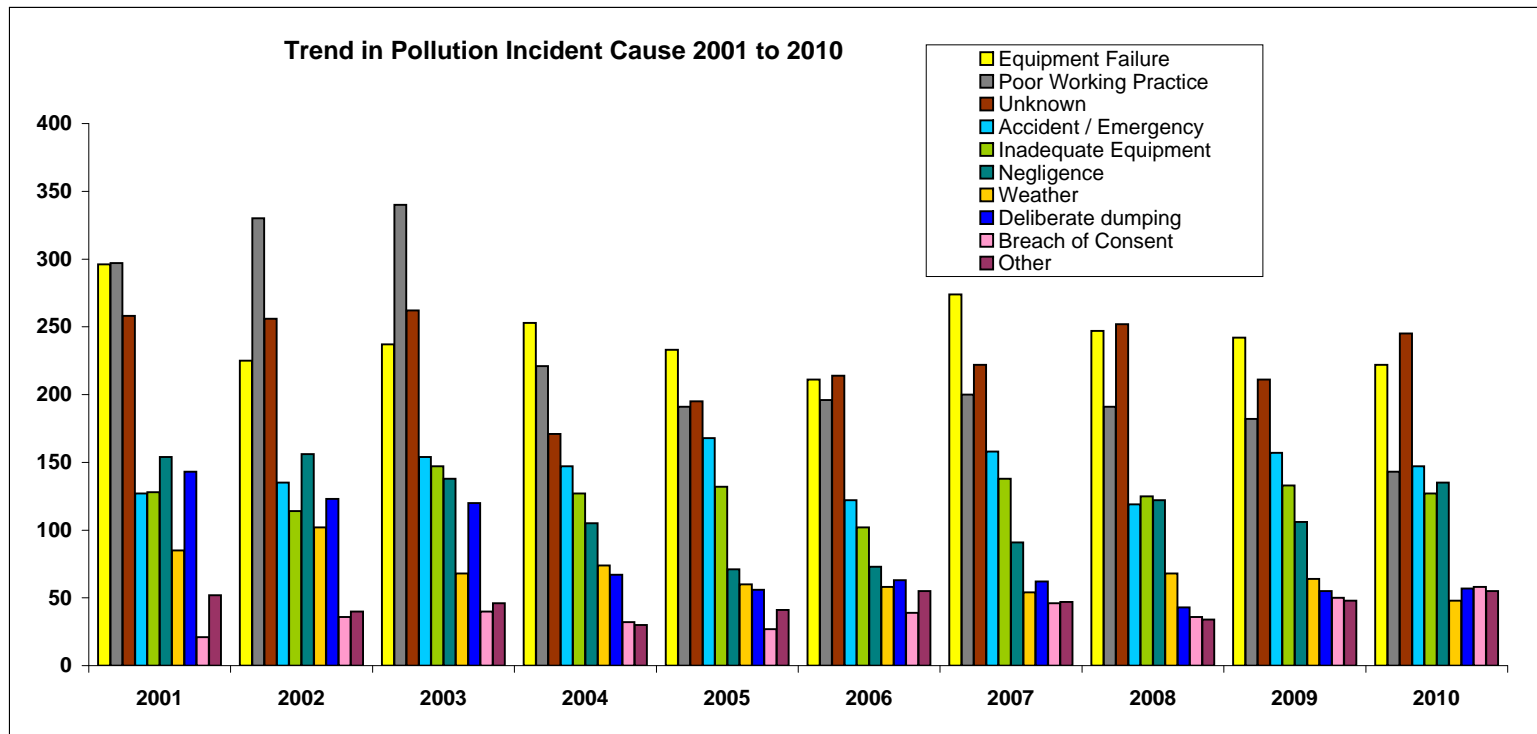


**Trend in Pollution Incident Cause 2001 to 2010**

[Return to Index](#)

Cause	2001	2002	2003	2004	2005	2006	2007	2008	2009	2010
Equipment Failure	296	225	237	253	233	211	274	247	242	222
Poor Working Practice	297	330	340	221	191	196	200	191	182	143
Unknown	258	256	262	171	195	214	222	252	211	245
Accident / Emergency	127	135	154	147	168	122	158	119	157	147
Inadequate Equipment	128	114	147	127	132	102	138	125	133	127
Negligence	154	156	138	105	71	73	91	122	106	135
Weather	85	102	68	74	60	58	54	68	64	48
Deliberate dumping	143	123	120	67	56	63	62	43	55	57
Breach of Consent	21	36	40	32	27	39	46	36	50	58
Other	52	40	46	30	41	55	47	34	48	55
<b>Total</b>	<b>1561</b>	<b>1517</b>	<b>1552</b>	<b>1227</b>	<b>1174</b>	<b>1133</b>	<b>1292</b>	<b>1237</b>	<b>1248</b>	<b>1237</b>

**Figure 17: Trend in Pollution Incident Cause 2001 to 2010**

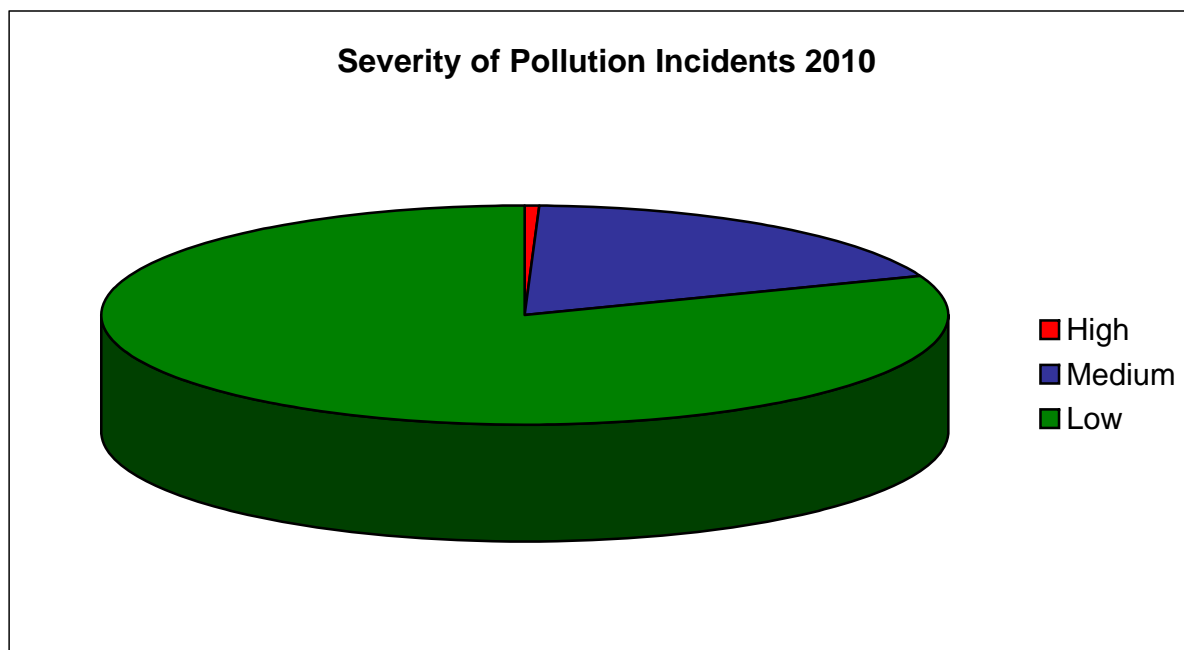


**Table 11: Severity of Pollution Incidents 2010**

[Return to Index](#)

	No. of Incidents	As a % of the total	(See 2006 Report for Severity Classification Definitions)
High	7	0.57%	
Medium	229	18.51%	
Low	1001	80.92%	
<b>Total</b>	<b>1237</b>	<b>100%</b>	

**Figure 18: Severity of Pollution Incidents 2010**

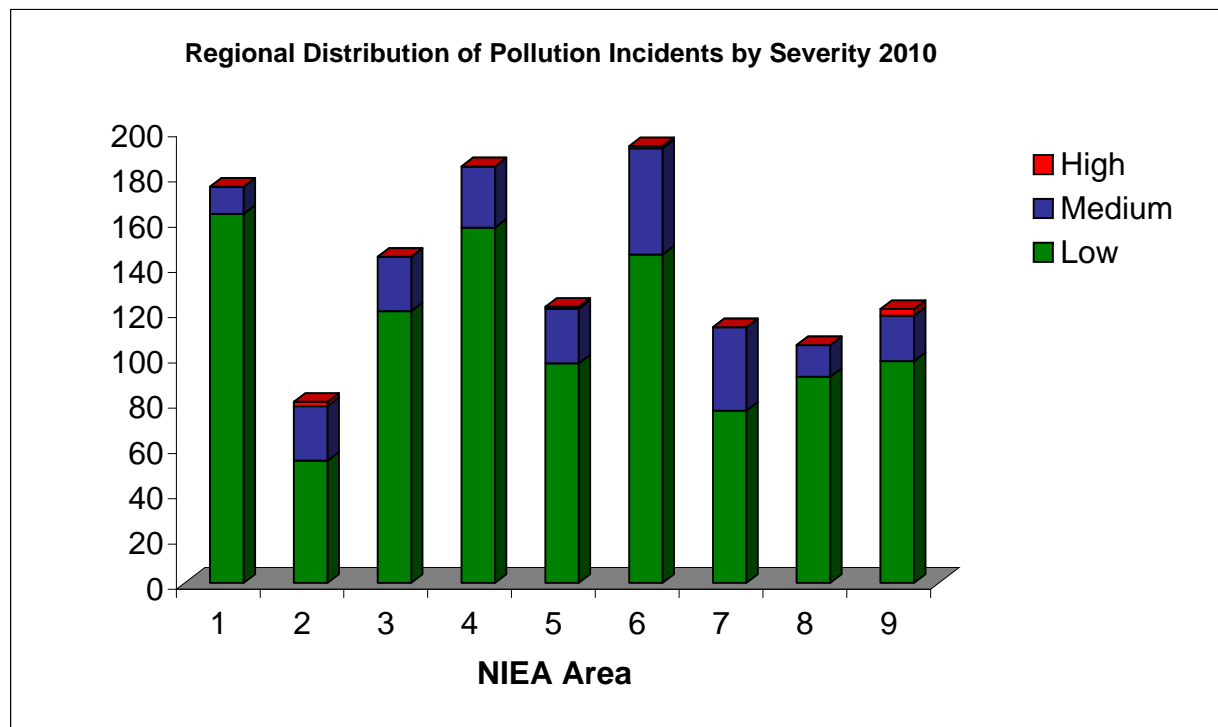


**Table 12: Regional Distribution of Pollution Incidents by Severity in 2010**

Area	Severity			Total
	Low	Medium	High	
1	163	12	0	175
2	54	24	2	80
3	120	24	0	144
4	157	27	0	184
5	97	24	1	122
6	145	47	1	193
7	76	37	0	113
8	91	14	0	105
9	98	20	3	121
<b>Total</b>	<b>1001</b>	<b>229</b>	<b>7</b>	<b>1237</b>

[Return to Index](#)

**Figure 19: Regional Distribution of Pollution Incidents by Severity in 2010**

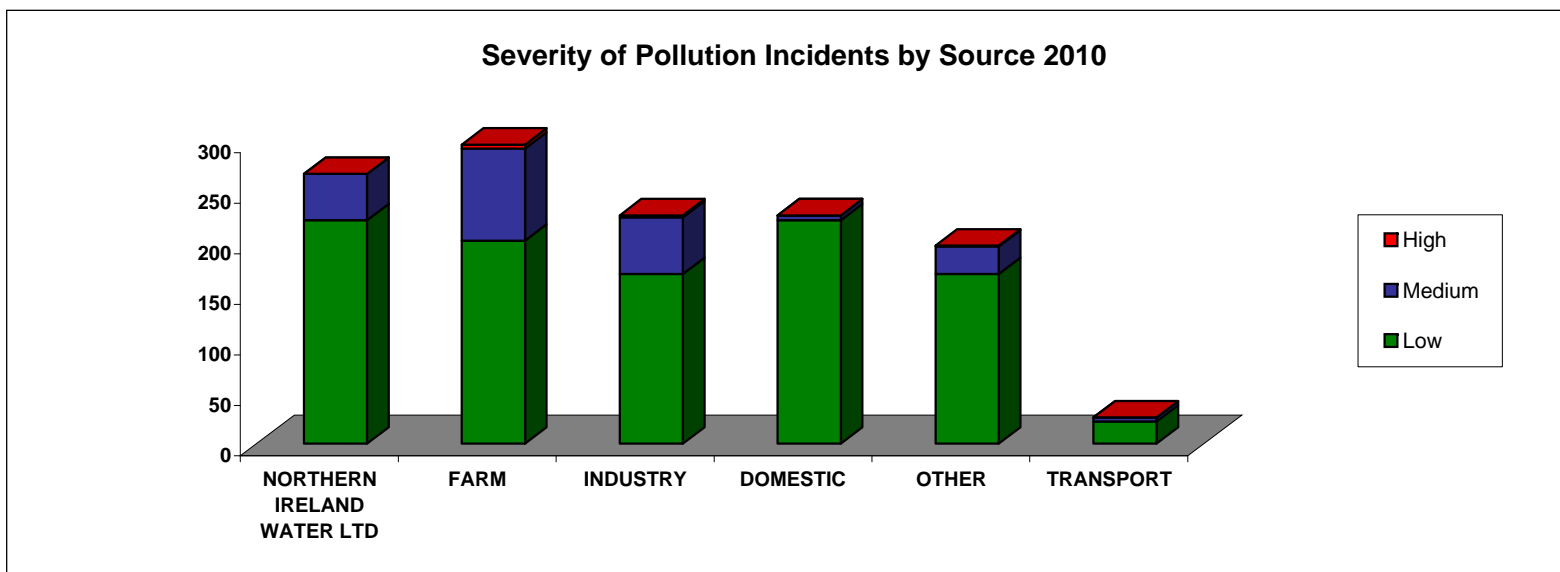


**Table 13: Severity of Pollution Incidents by Source 2010**

[Return to Index](#)

SOURCE	Low	Medium	High	Total
NORTHERN IRELAND WATER LTD	221	46	0	267
FARM	201	91	4	296
INDUSTRY	168	56	2	226
DOMESTIC	221	5	0	226
OTHER	168	27	1	196
TRANSPORT	22	4	0	26
<b>Total</b>	<b>1001</b>	<b>229</b>	<b>7</b>	<b>1237</b>

**Figure 20: Severity of Pollution Incidents by Source 2010**

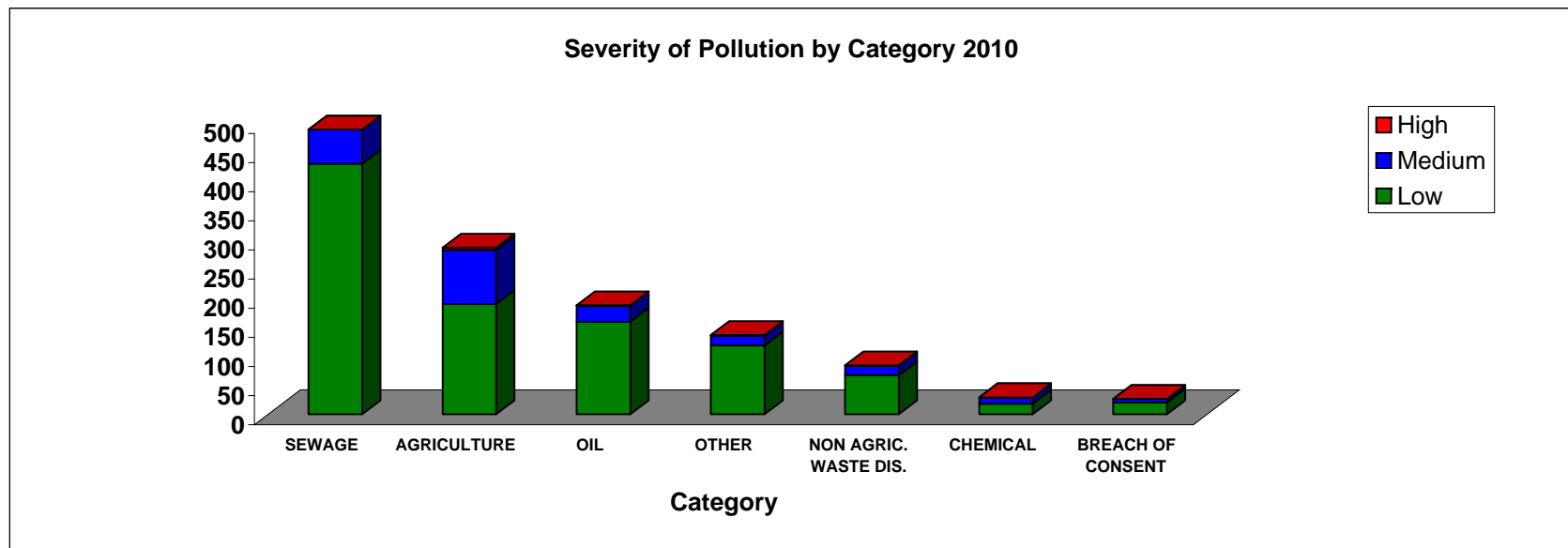


**Table 14: Severity of Pollution Incidents by Category 2010**

[Return to Index](#)

Category Name	High	Medium	Low	Total
SEWAGE	0	59	430	489
AGRICULTURE	4	93	189	286
OIL	1	27	159	187
OTHER	1	17	118	136
NON AGRIC. WASTE DIS.	1	16	67	84
CHEMICAL	0	11	18	29
BREACH OF CONSENT	0	6	20	26
<b>Total</b>	<b>7</b>	<b>229</b>	<b>1001</b>	<b>1237</b>

**Figure 21: Severity of Pollution Incidents by Category 2010**

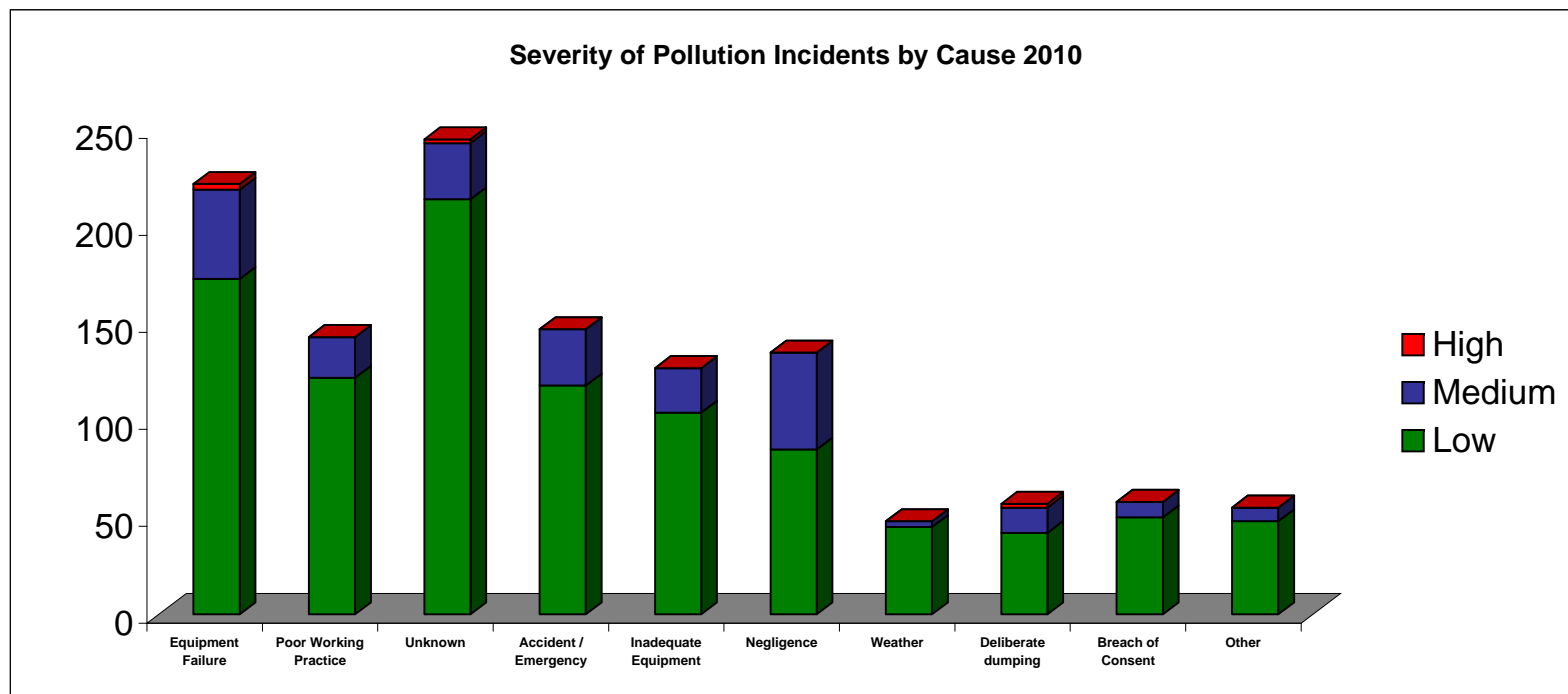


**Table 15: Severity of Pollution Incidents by Cause 2010**

[Return to Index](#)

Cause	Low	Medium	High	Total
Equipment Failure	173	46	3	222
Poor Working Practice	122	21	0	143
Unknown	214	29	2	245
Accident / Emergency	118	29	0	147
Inadequate Equipment	104	23	0	127
Negligence	85	50	0	135
Weather	45	3	0	48
Deliberate dumping	42	13	2	57
Breach of Consent	50	8	0	58
Other	48	7	0	55
<b>Total</b>	<b>1001</b>	<b>229</b>	<b>7</b>	<b>1237</b>

**Figure 22: Severity of Pollution Incidents by Cause 2010**

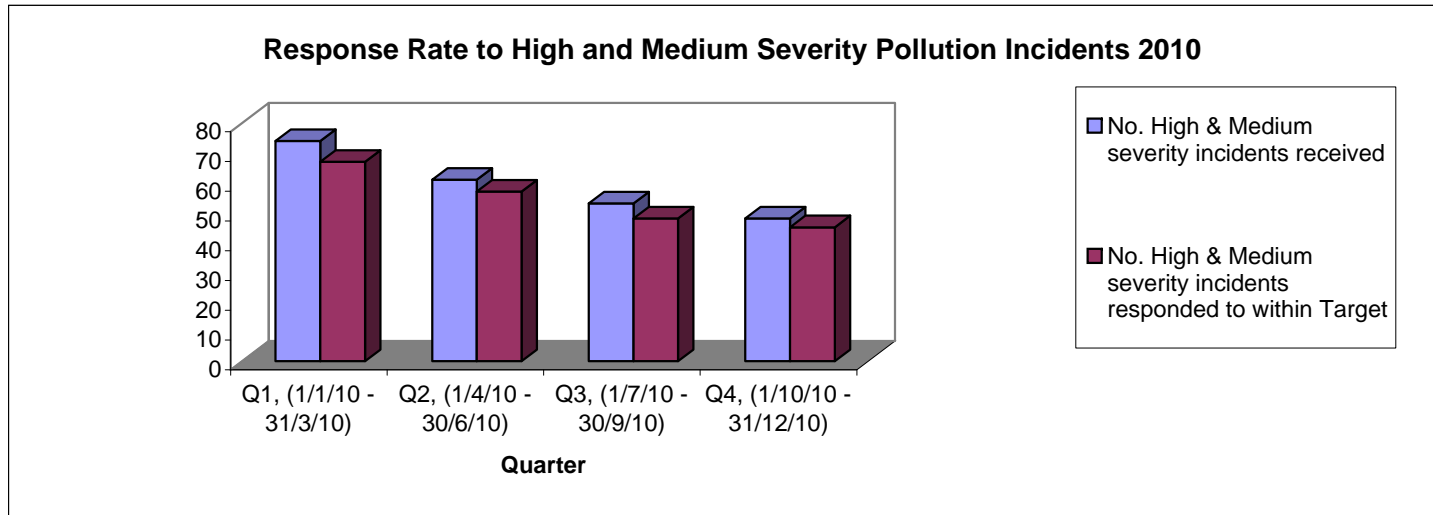


**Table 16: Response Rate to High and Medium Severity Pollution Incidents 2010**

[Return to Index](#)

Time period	No. High & Medium severity incidents received	No. High & Medium severity incidents responded to within Target	% High & Medium severity incidents responded to within Target
Q1, (1/1/10 - 31/3/10)	74	67	90.5%
Q2, (1/4/10 - 30/6/10)	61	57	93.4%
Q3, (1/7/10 - 30/9/10)	53	48	90.6%
Q4, (1/10/10 - 31/12/10)	48	45	93.8%
<b>Total for 2010</b>	<b>236</b>	<b>217</b>	<b>91.9%</b>
		<b>Overall response rate for 2010</b>	<b>91.9%</b>

**Figure 23: Response Rate to High and Medium Severity Pollution Incidents 2010**



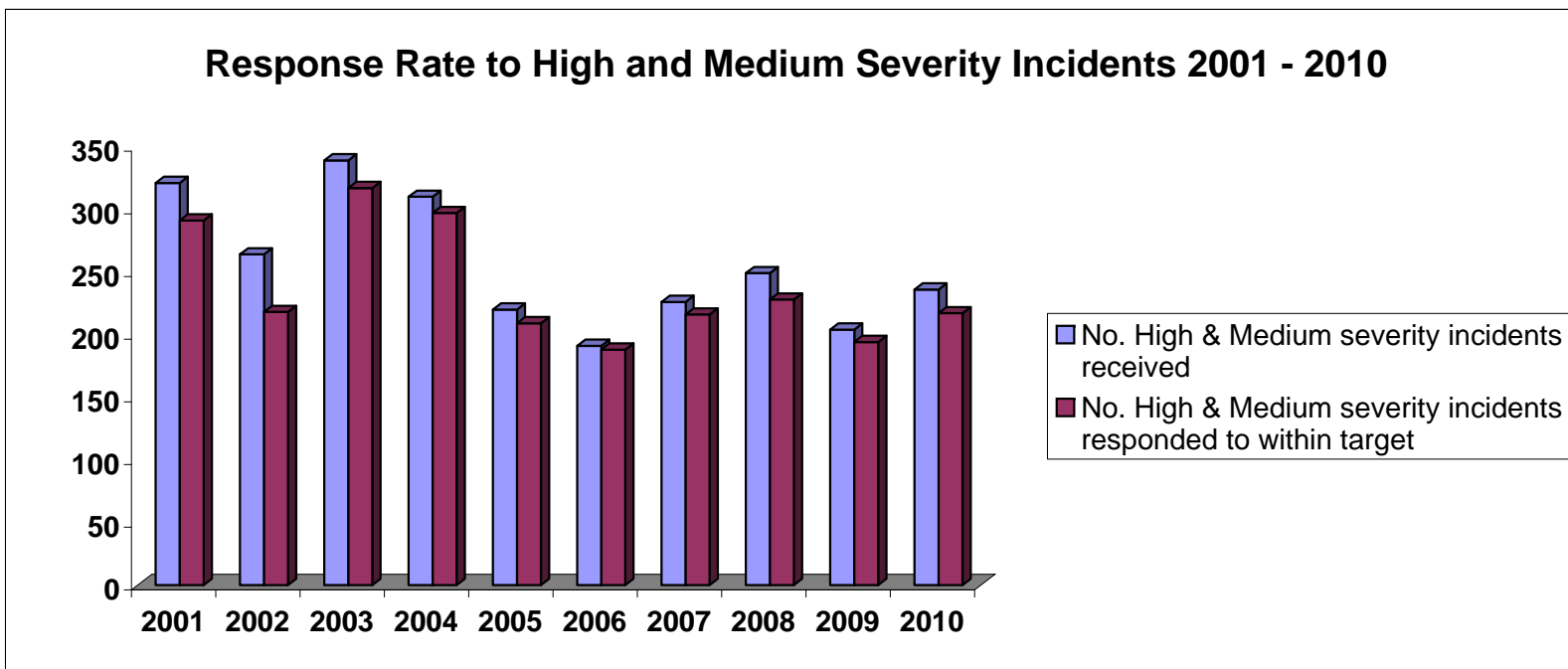
**Table 17: Response Rate to High and Medium Severity Pollution Incidents 2001 to 2010**

[Return to Index](#)

	2001	2002	2003	2004	2005	2006	2007	2008	2009	2010
<b>No. High &amp; Medium severity incidents received</b>	321	264	339	310	220	191	226	249	204	236
<b>No. High &amp; Medium severity incidents responded to within target</b>	291	218	317	297	209	188	216	228	194	217
<b>Response rate (%)</b>	<b>90.7%</b>	<b>82.6%</b>	<b>93.5%</b>	<b>95.8%</b>	<b>95.0%</b>	<b>98.4%</b>	<b>95.5%</b>	<b>91.6%</b>	<b>95.1%</b>	<b>91.9%</b>

\*The Incident Response Targets Changed in 2005. (The Targets are detailed in Section 2.10 of the 2006 Report).

**Figure 24: Response Rate to High and Medium Severity Pollution Incidents 2001 to 2010**

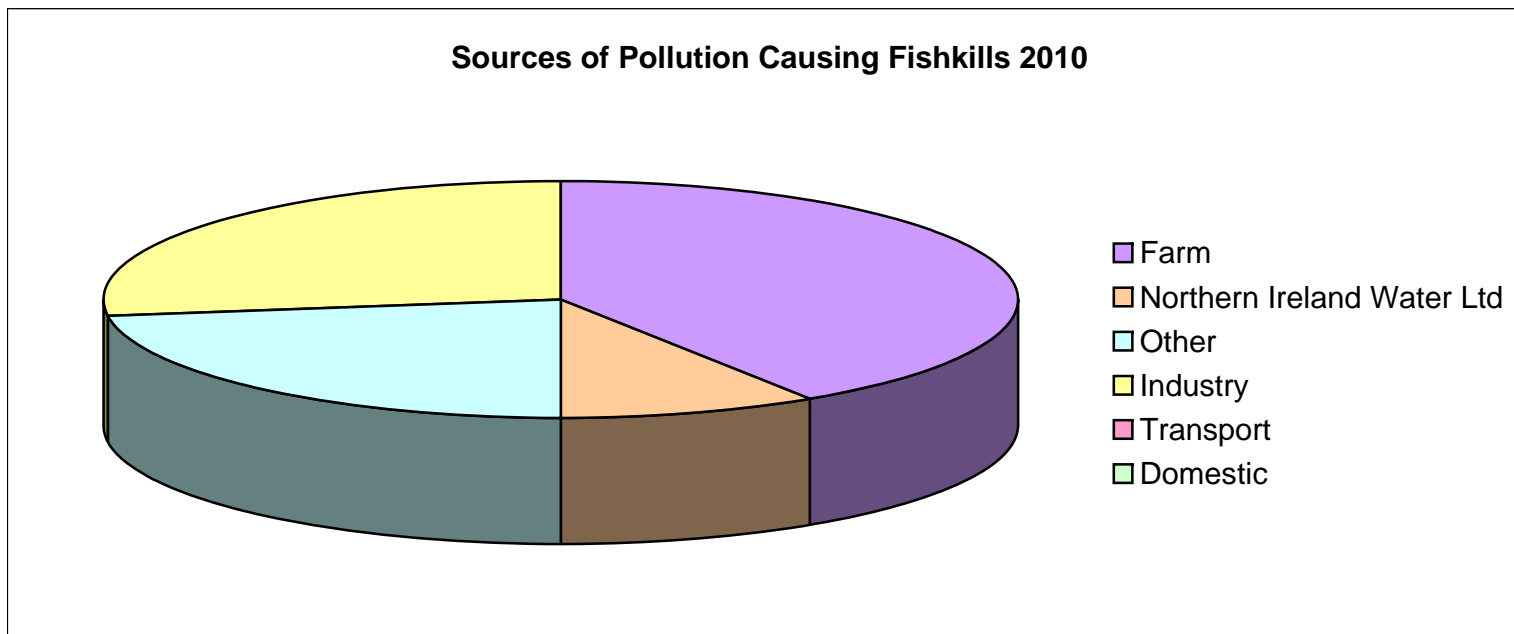


**Table 18: Sources of Pollution Causing FishKills in 2010**

[Return to Index](#)

Source	As a % of the total	2010
Farm	40.9%	9
Northern Ireland Water Ltd	9.1%	2
Other	22.7%	5
Industry	27.3%	6
Transport	0.0%	0
Domestic	0.0%	0
<b>Total</b>	<b>100%</b>	<b>22</b>

**Figure 25: Sources of Pollution Causing FishKills in 2010**

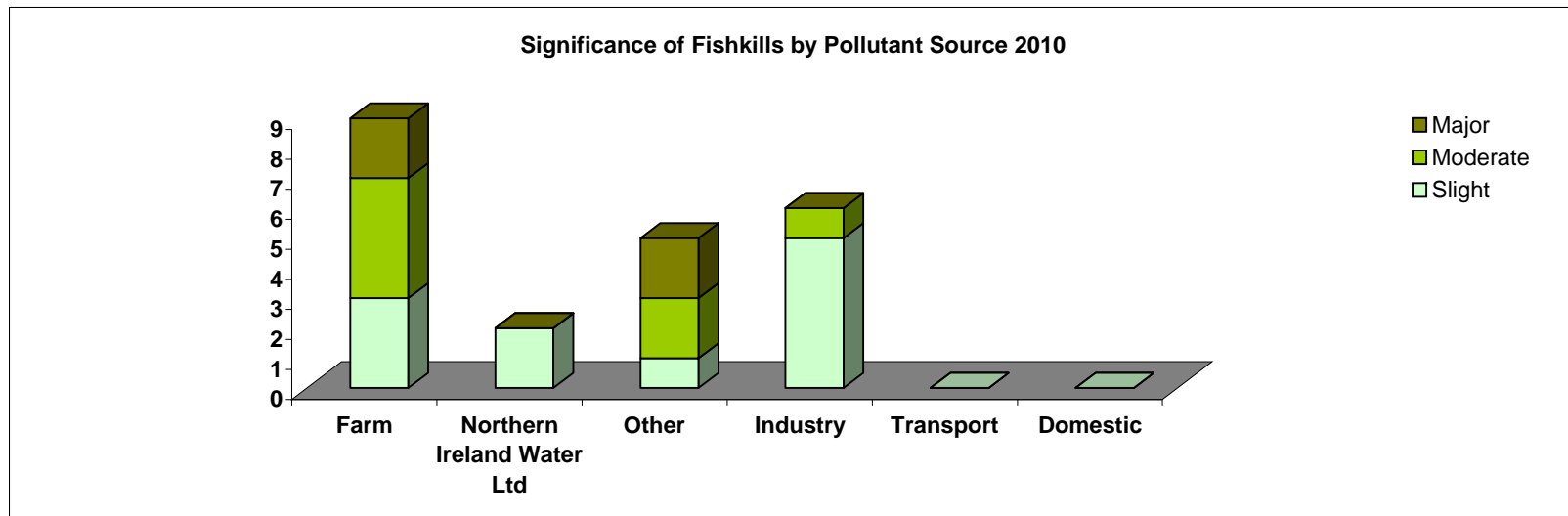


**Table 19: Significance of FishKills by Pollutant Source 2010**

[Return to Index](#)

Source	Slight	Moderate	Major	Total	(See 2006 Report for Classification Definitions)
Farm	3	4	2	9	
Northern Ireland Water Ltd	2	0	0	2	
Other	1	2	2	5	
Industry	5	1	0	6	
Transport	0	0	0	0	
Domestic	0	0	0	0	
<b>Total</b>	<b>11</b>	<b>7</b>	<b>4</b>	<b>22</b>	

**Figure 26: Significance of FishKills by Pollutant Source 2010**

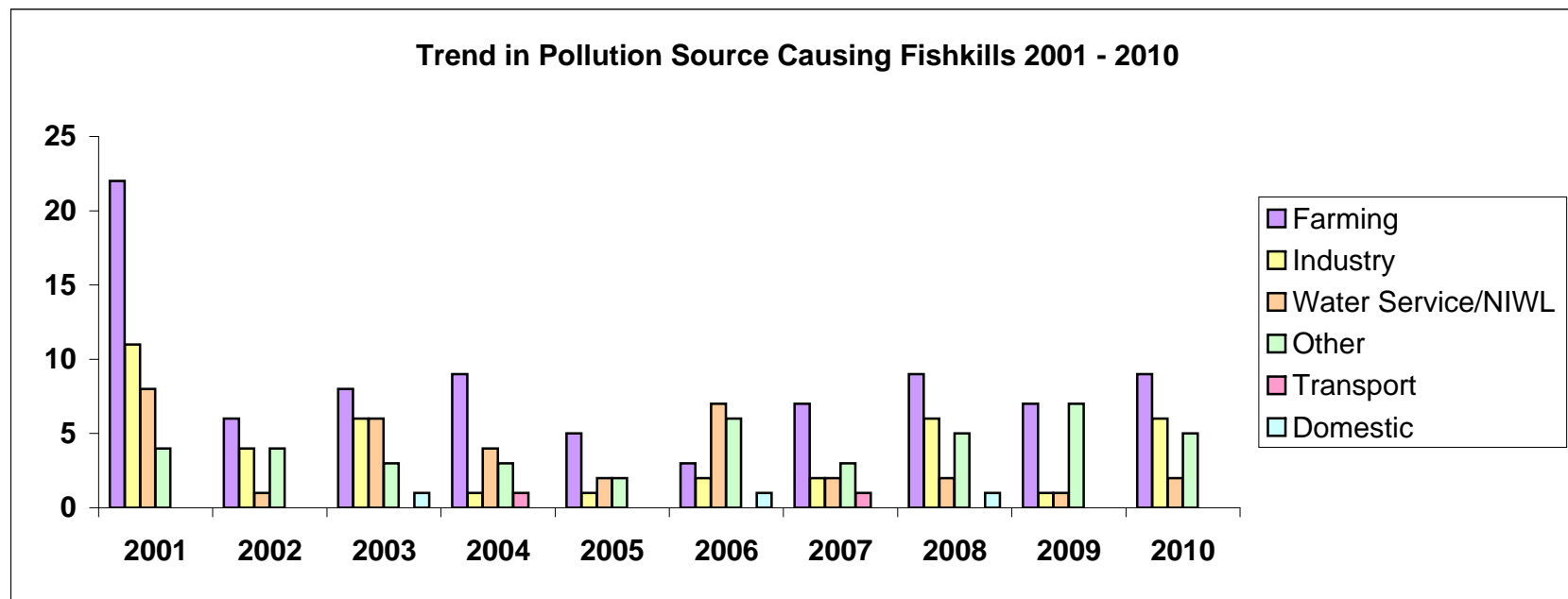


**Trend in Pollution Source Causing FishKills 2001 to 2010**

[Return to Index](#)

	2001	2002	2003	2004	2005	2006	2007	2008	2009	2010	Total
Farming	22	6	8	9	5	3	7	9	7	9	85
Industry	11	4	6	1	1	2	2	6	1	6	40
Water Service/NIWL	8	1	6	4	2	7	2	2	1	2	35
Other	4	4	3	3	2	6	3	5	7	5	42
Transport	0	0	0	1	0	0	1	0	0	0	2
Domestic	0	0	1	0	0	1	0	0	1	0	3
<b>Total</b>	<b>45</b>	<b>15</b>	<b>24</b>	<b>18</b>	<b>10</b>	<b>19</b>	<b>15</b>	<b>22</b>	<b>17</b>	<b>22</b>	<b>207</b>

**Figure 27: Trend in Pollution Source Causing FishKills 2001 to 2010**



**Table 20: Summary of Cases Referred to PPS for Incidents that Occurred in 2009**[Return to Index](#)

<b>Summary of Cases Referred to PPS with a Recommendation for Prosecution, for Incidents that occurred during 2009 (As at 12 April 2011)</b>		
<b>Category</b>	<b>Cases referred to PPS for prosecution</b>	<b>% of the total</b>
<b>Agriculture</b>	<b>15</b>	<b>38.5%</b>
<b>Non Agric. Waste Dis.</b>	<b>4</b>	<b>10.3%</b>
<b>Breach Of Consent</b>	<b>2</b>	<b>5.1%</b>
<b>Sewage</b>	<b>13</b>	<b>33.3%</b>
<b>Chemical</b>	<b>2</b>	<b>5.1%</b>
<b>Oil</b>	<b>1</b>	<b>2.6%</b>
<b>Other</b>	<b>2</b>	<b>5.1%</b>
<b>Total</b>	<b>39</b>	<b>100%</b>

**Table 21: Costs and Fines Imposed under the Water (NI) Order 1999, for Incidents that occurred in 2009 (As at 12 April 2011)**

<b>CATEGORY</b>	<b>Analysis Costs</b>	<b>Court Costs</b>	<b>Fines</b>	<b>Total</b>
<b>Agriculture</b>	£1,276.53	£351.00	£13,850.00	£15,477.53
<b>Breach of Consent</b>	£102.90	£31.00	£750.00	£883.90
<b>Chemical</b>	£0.00	£25.00	£3,500.00	£3,525.00
<b>Non Agricultural Waste Discharge</b>	£223.23	£59.00	£13,250.00	£13,532.23
<b>Oil</b>	£230.20	£25.00	£0.00	£255.20
<b>Other</b>	£250.55	£81.00	£0.00	£331.55
<b>Sewage</b>	£679.50	£143.00	£3,350.00	£4,172.50
<b>TOTAL</b>	<b>£2,762.91</b>	<b>£715.00</b>	<b>£34,700.00</b>	<b>£38,177.91</b>

[Return to Index](#)

**Table 22: Water Pollution Prosecution Cases and Warning Letters 2000 to 2009 ( as at 12 April 2011)**

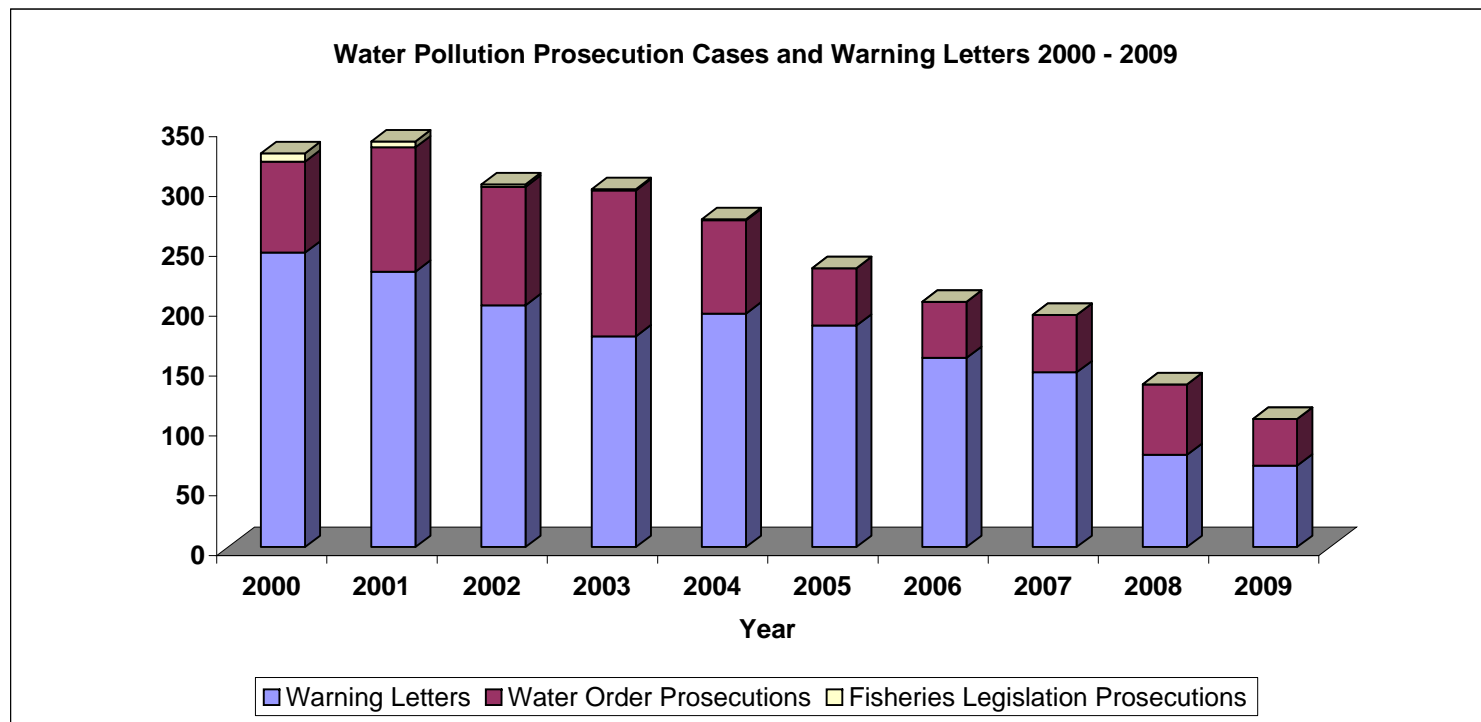
<b>Year</b>	<b>Water Order Prosecution Cases</b>	<b>Fisheries Legislation Prosecution Cases</b>	<b>Total Prosecution Cases</b>	<b>Warning Letters</b>
2000	76	7	83	246
2001	104	5	109	230
2002	99	2	101	202
2003	122	1	123	176
2004	78	1	79	195
2005	48	0	48	185
2006	47	0	47	158
2007	48	0	48	146
2008	59	0	61	77
2009	39	0	39	68

**Water Pollution Prosecution Cases and Warning Letters 2000 to 2009**

[Return to Index](#)

	Warning Letters	Water Order Prosecution Cases	Fisheries Legislation Prosecution Cases	Total Prosecution Cases
2000	246	76	7	83
2001	230	104	5	109
2002	202	99	2	101
2003	176	122	1	123
2004	195	78	1	79
2005	185	48	0	48
2006	158	47	0	47
2007	146	48	0	48
2008	77	59	0	59
2009	68	39	0	39

**Figure 28: Water Pollution Prosecution Cases and Warning Letters 2000 to 2009**



**Table 23: Number of Proactive Pollution Prevention Inspections by Sector 2010**

Sector	Number of Inspections
BASIS	40
Pollution Investigation	6
Industrial Estate Surveys	10
Building sites	8
River Culvert works	1
Major Linear works	17
Bridge works	9
Wind Farms	2
Business Premises	2
Quarry Industry	2
Agricultural Industry	4
Oil/Fuel/Hydrocarbons	7
NIW	7
Other	1
<b>TOTAL</b>	<b>116</b>

**Figure 29: Number of Proactive Pollution Prevention Inspections by Sector 2010**

