

# The Quoile Pondage Fishkill & NIEA investigation

NIEA Incident Number WR 5/08/97

**NIEA Area 5 Water Quality Team**

Lead Investigating Water Quality Inspector – Dr Kevin McGlynn

# Pollution Incidents

	2007*	2008
Pollution Incidents	264	
Medium or High Severity	26	
Reported Fishkills	2	

\* Pre-audit numbers



*View towards Tidal Barrier*



*Downstream of Killyleagh Road*



## *Steamboat Quay*



*View near Yacht Club*



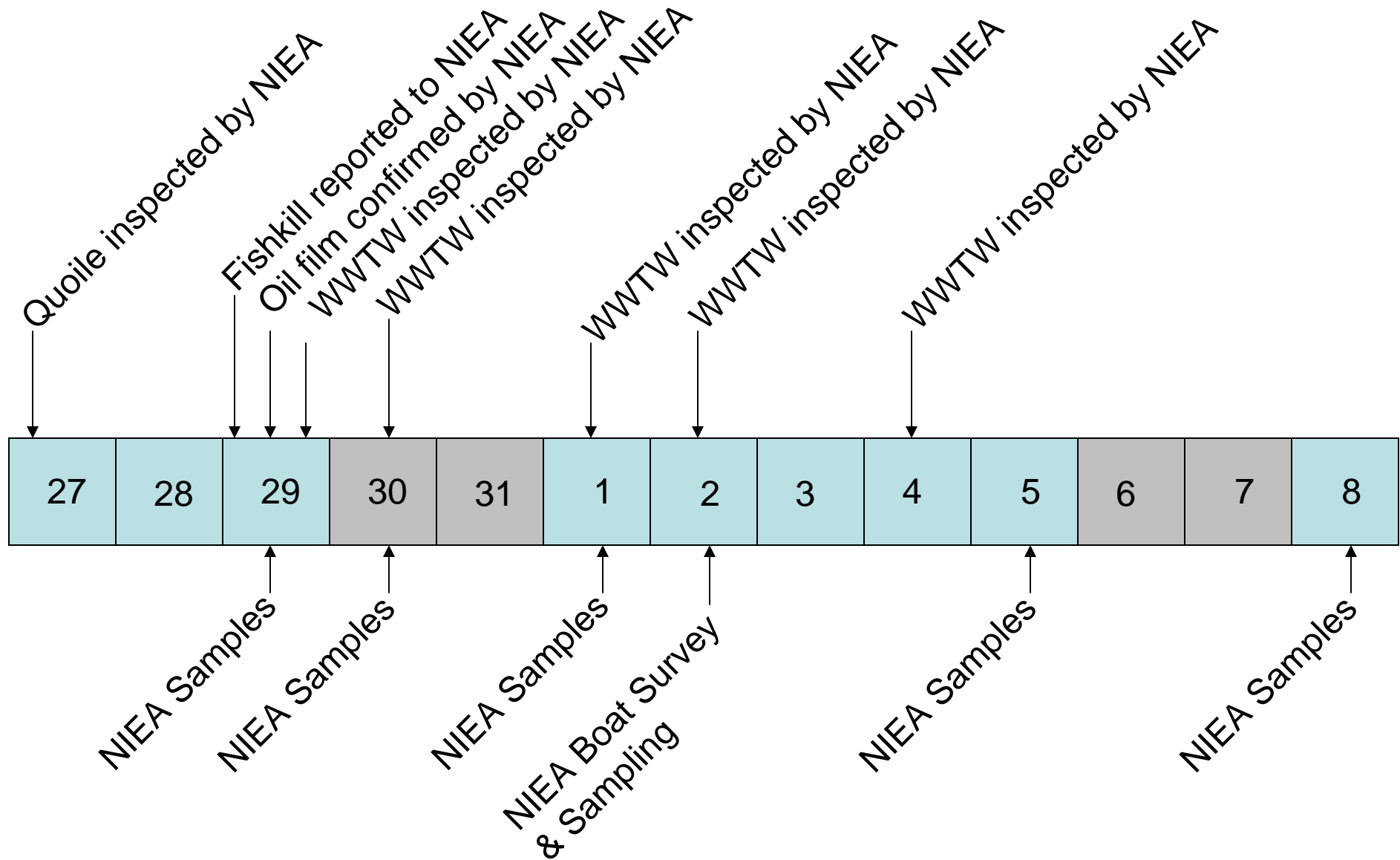
*Dead Fish – Pike at Inch Abbey*

# Northern Ireland Rainfall



- Met-office records collected since 1914
- **August 2008 - 203.2 mm**
- Was wettest summer month on record
- Only 5 months with + 200 mm
- Dec 1919, Dec 1929, Dec 1978, Dec 1999 & Oct 2002
- Only one wetter summer season - 1958

# Timeline of events



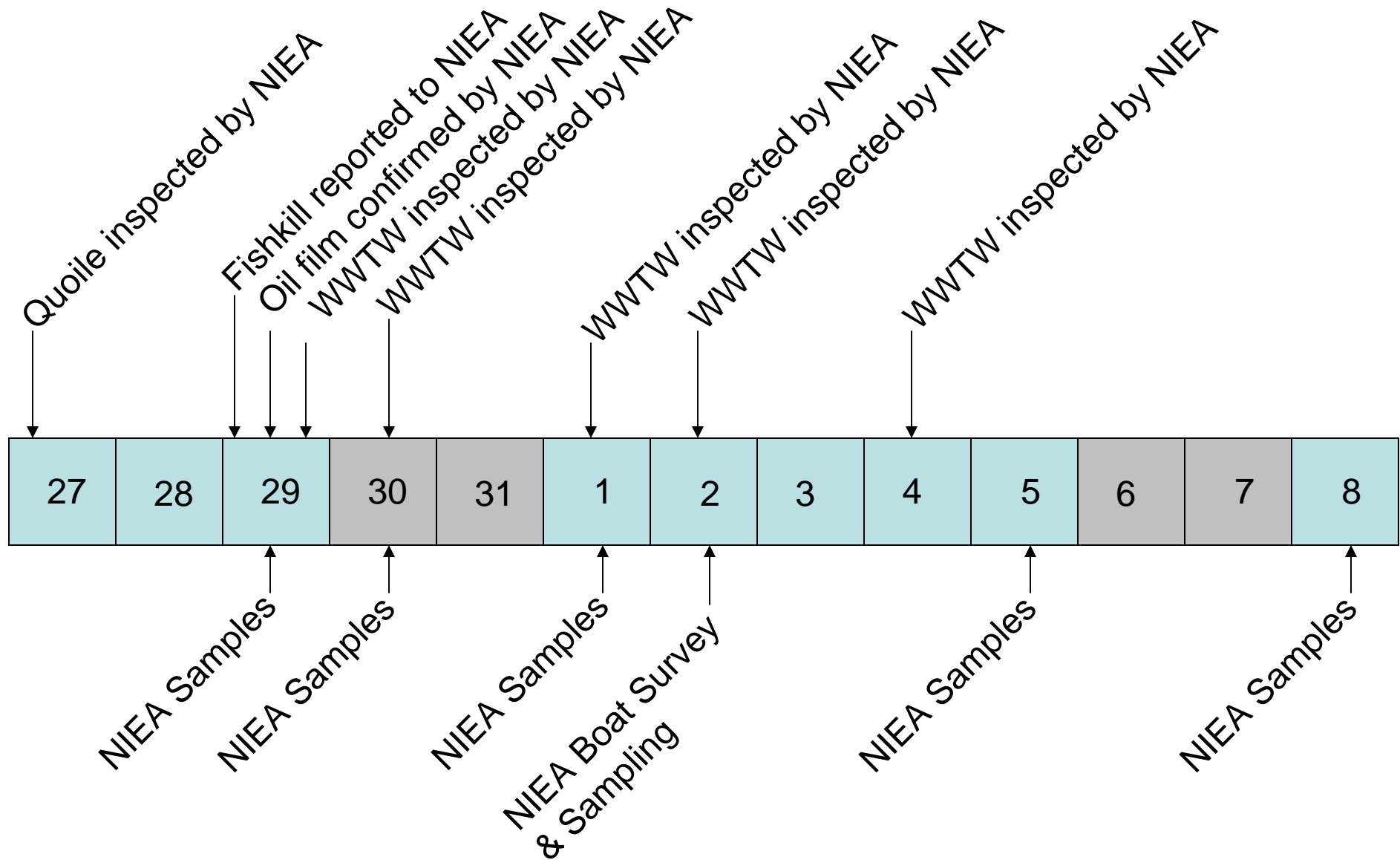


*Oil booms in Roughal Drain*

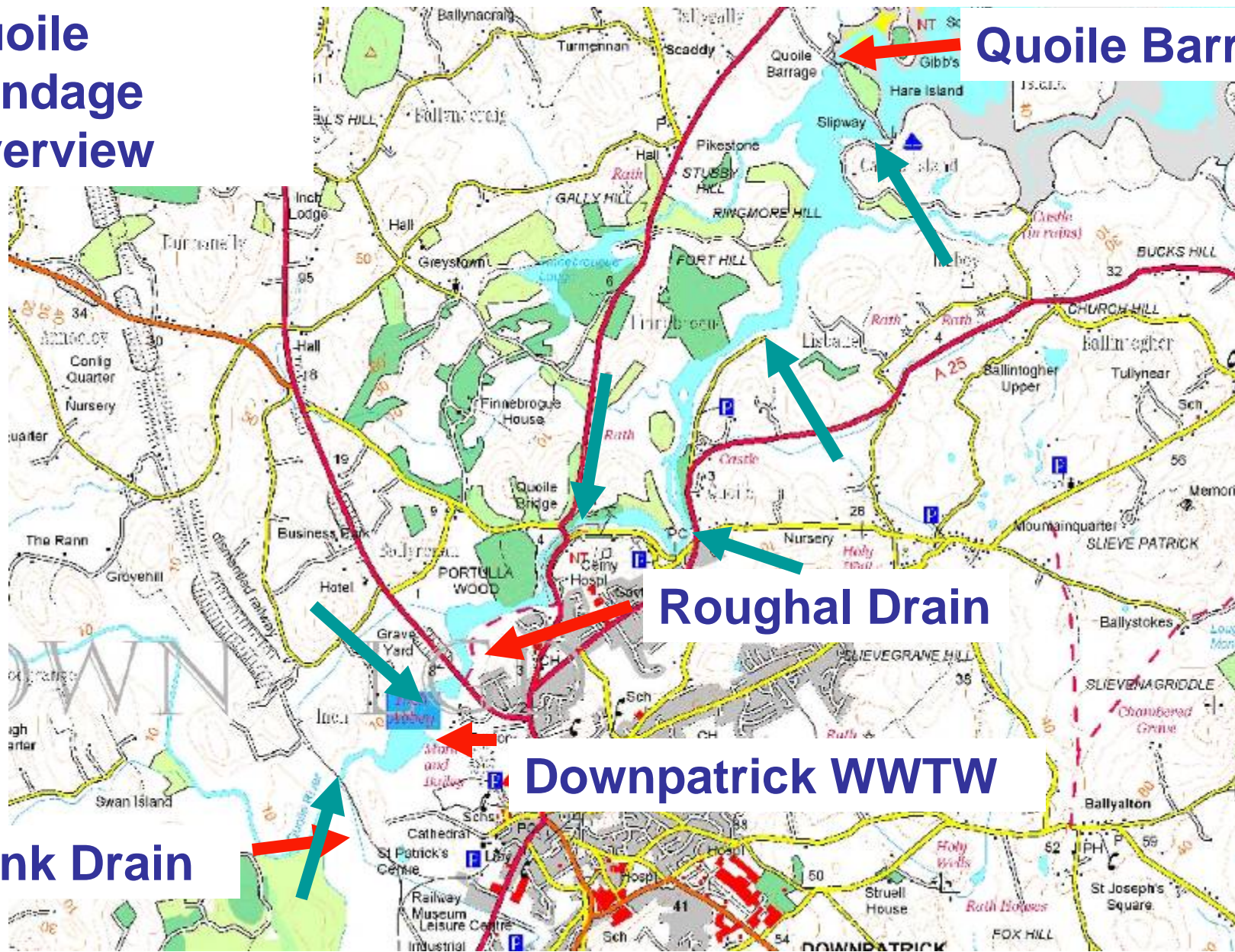


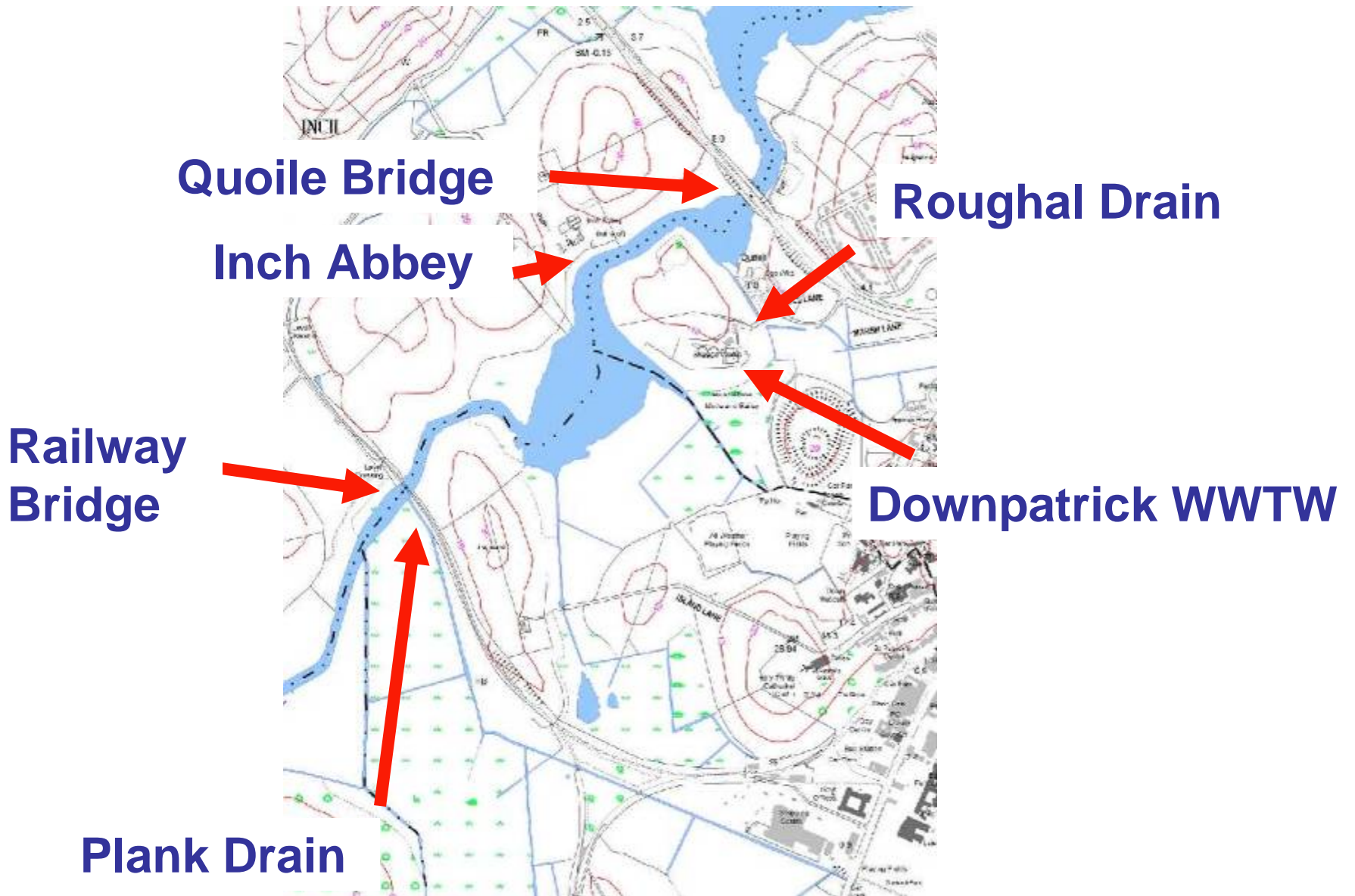
Roughal Drain looking upstream

# Timeline of events

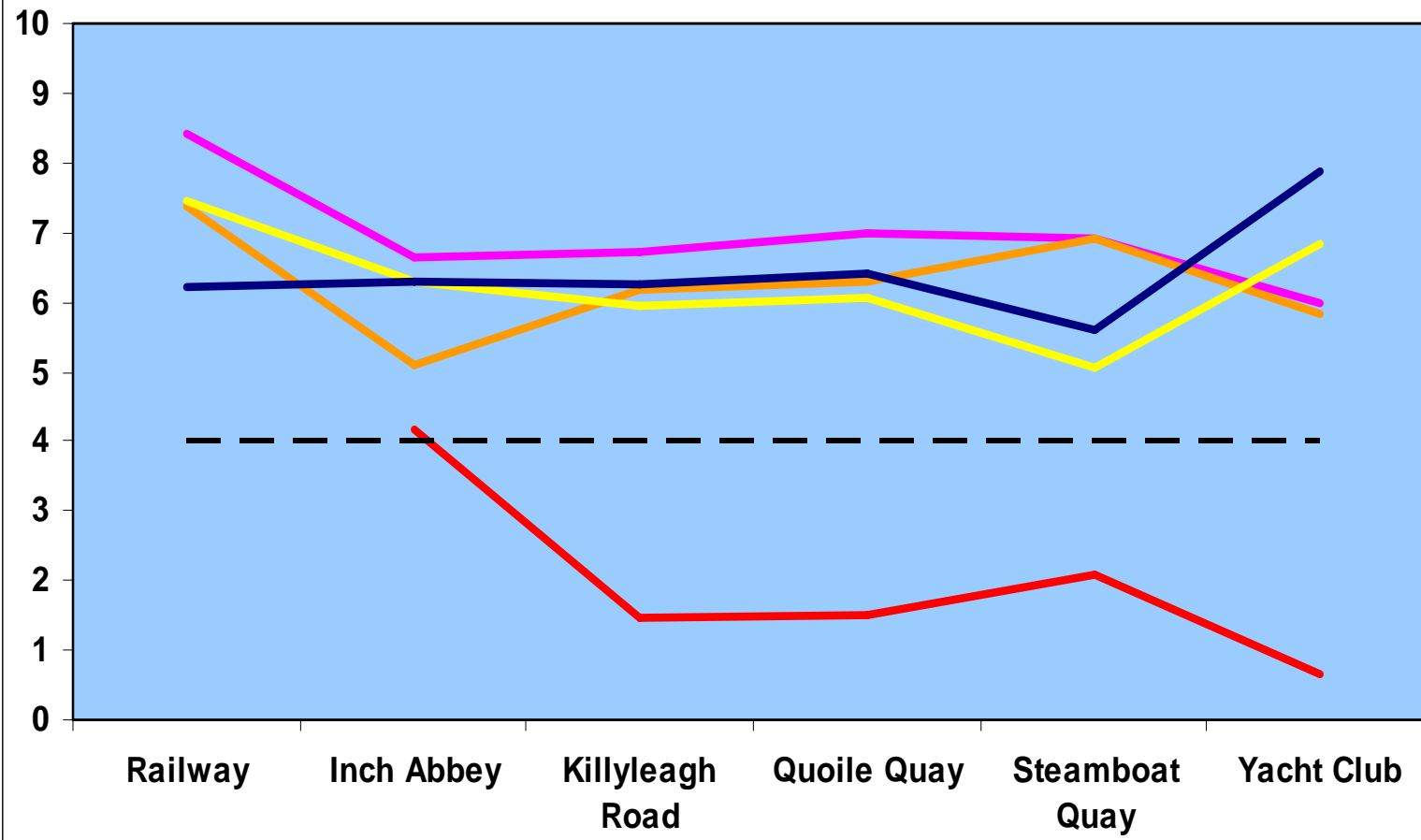


# Quoile Pondage Overview

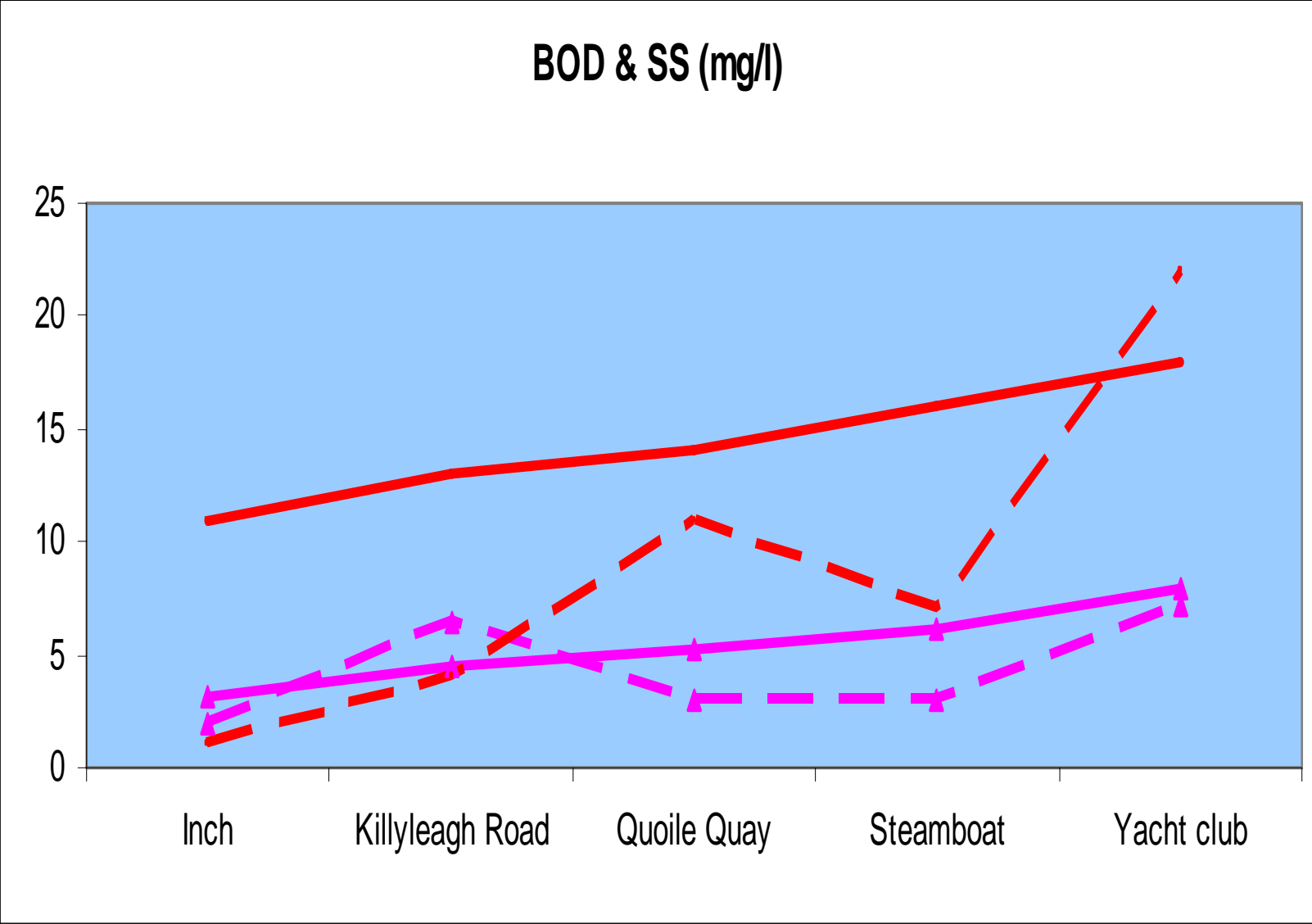




### Dissolved Oxygen (mg/l)

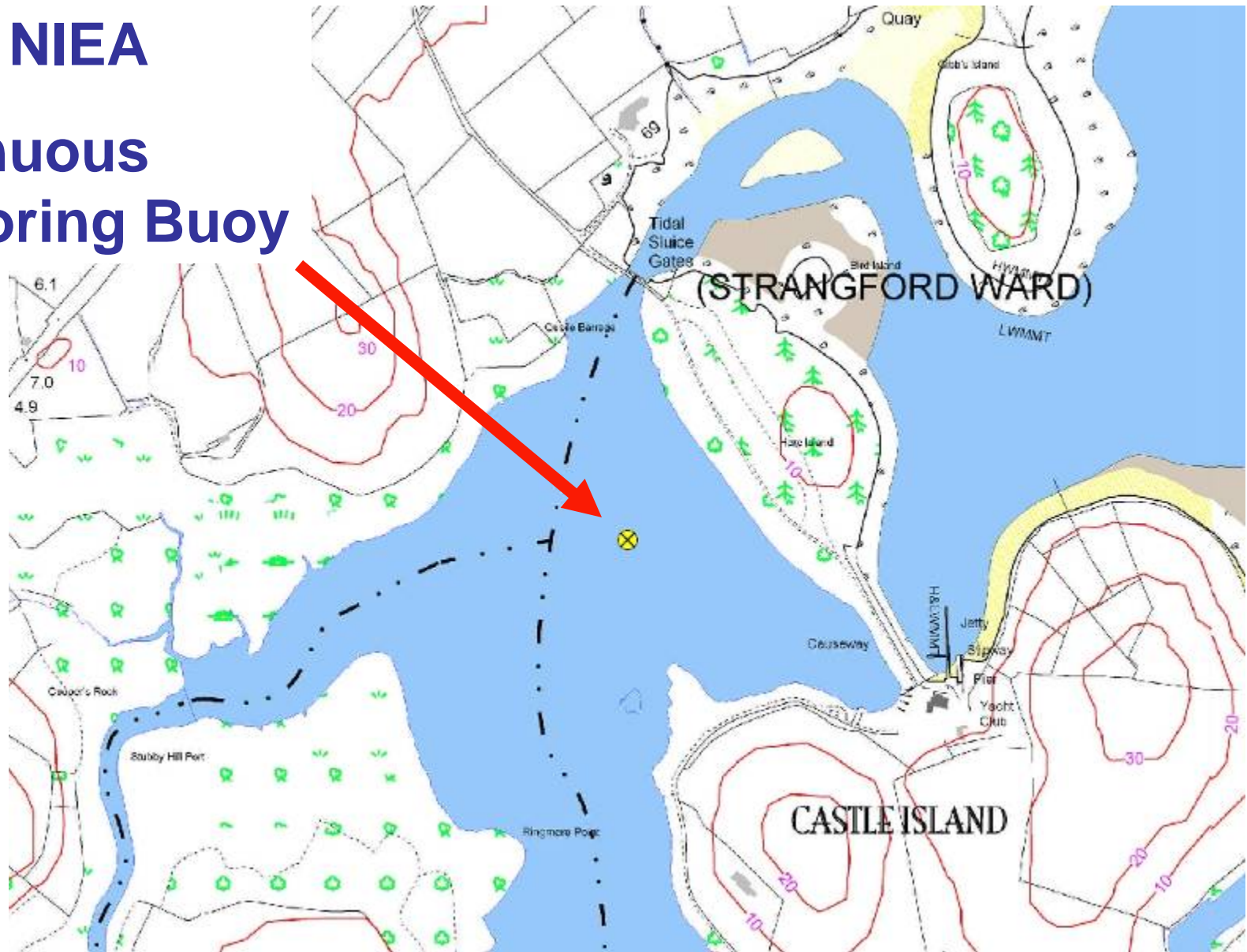


### BOD & SS (mg/l)

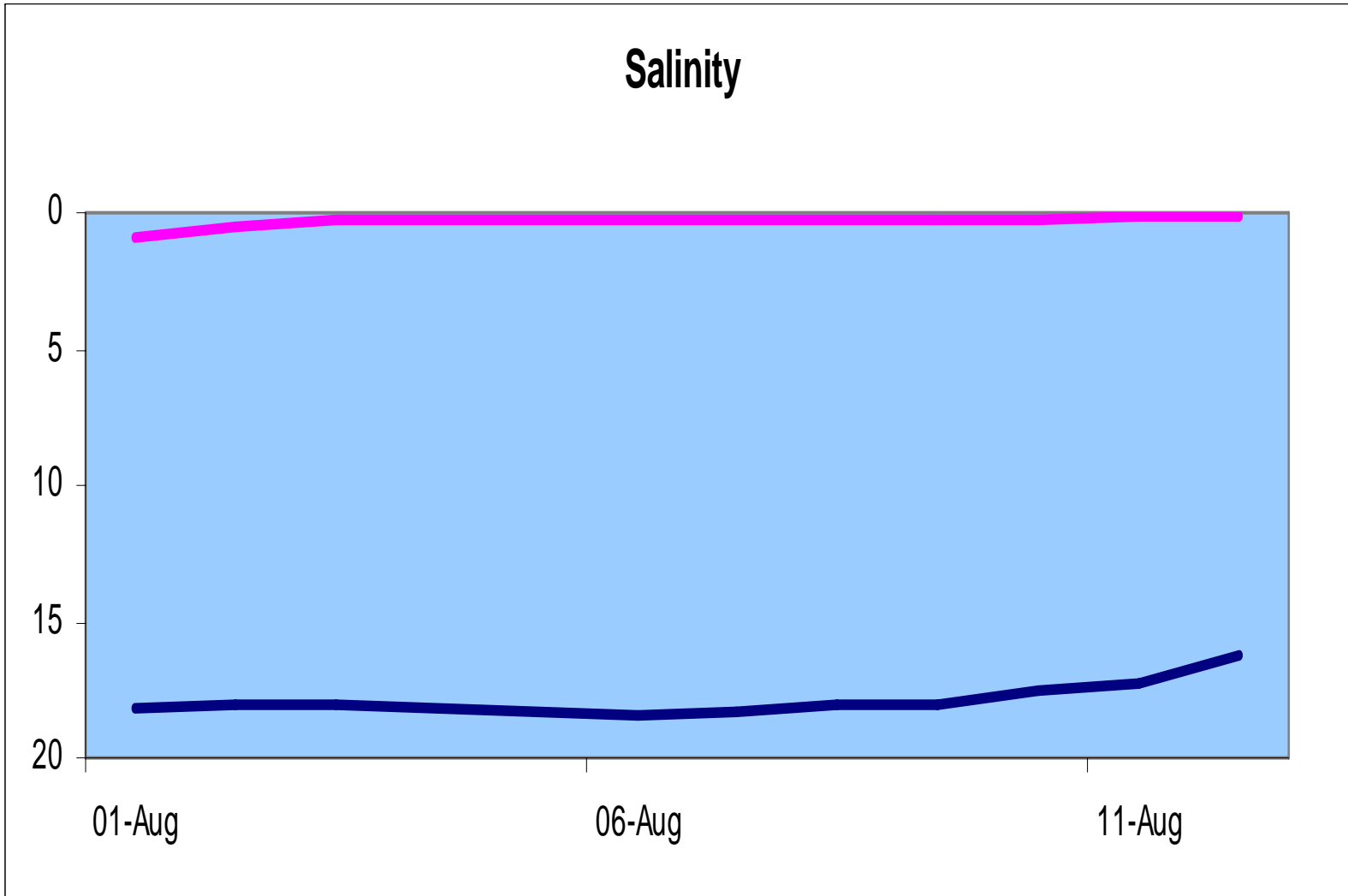


**AFBI / NIEA**

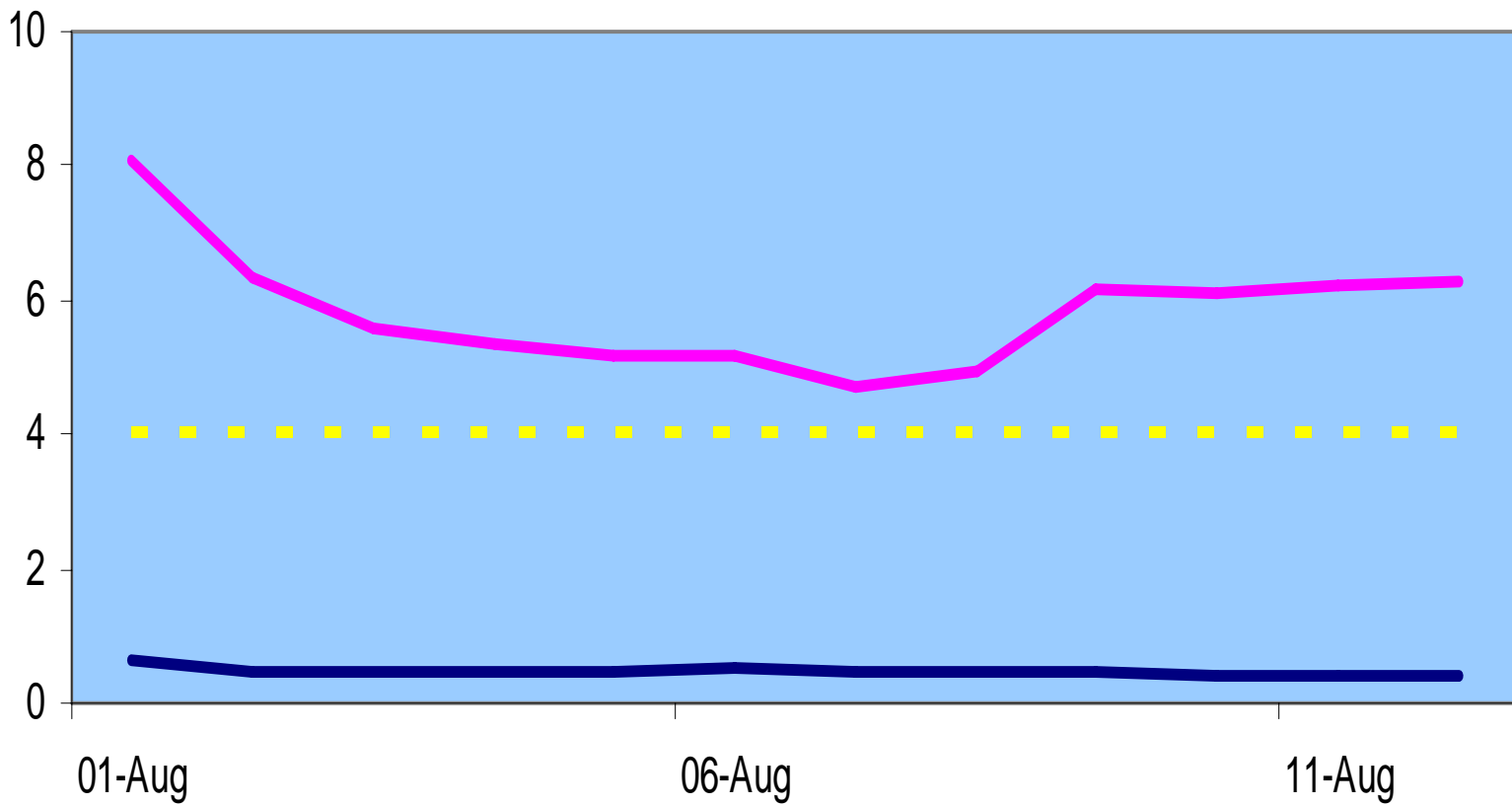
**Continuous  
Monitoring Buoy**



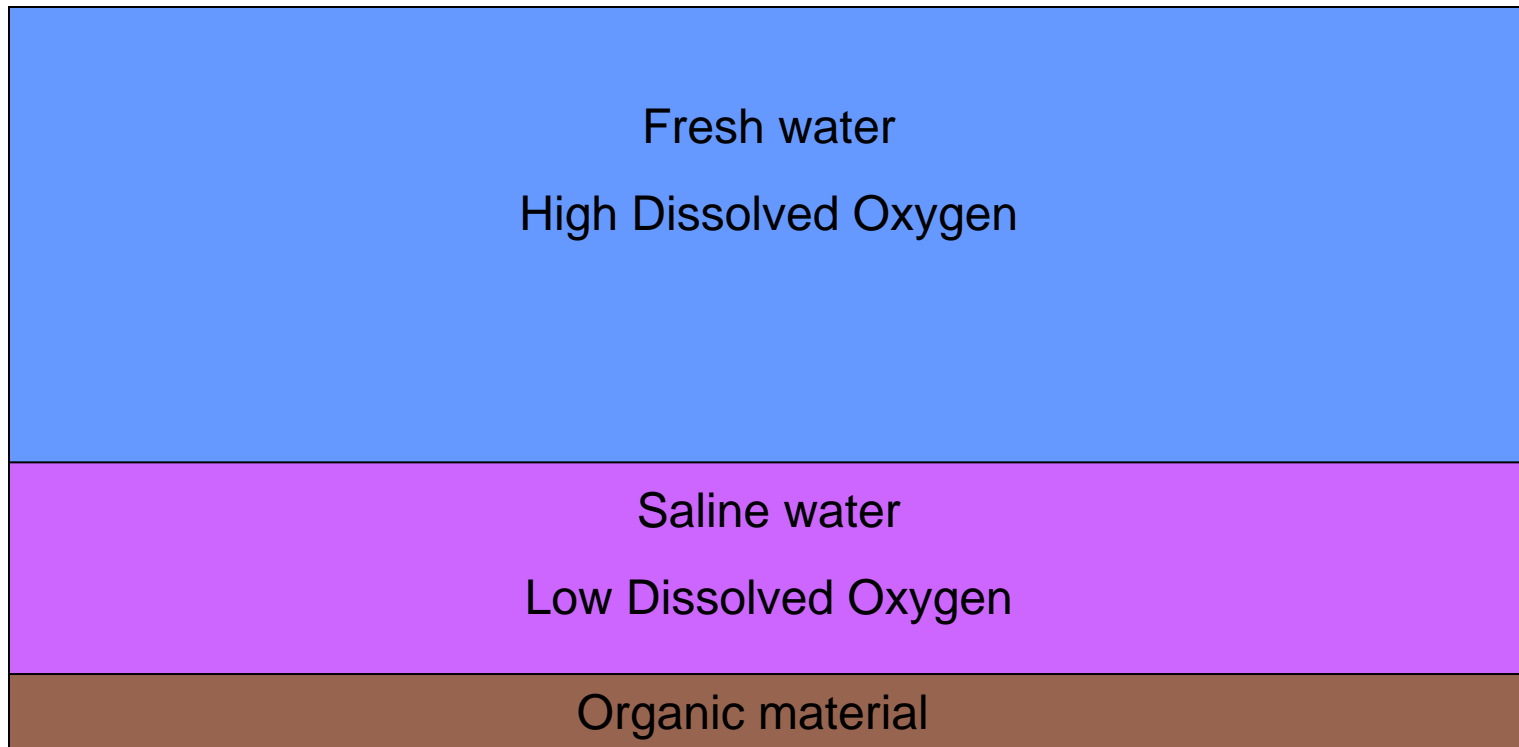
## Salinity



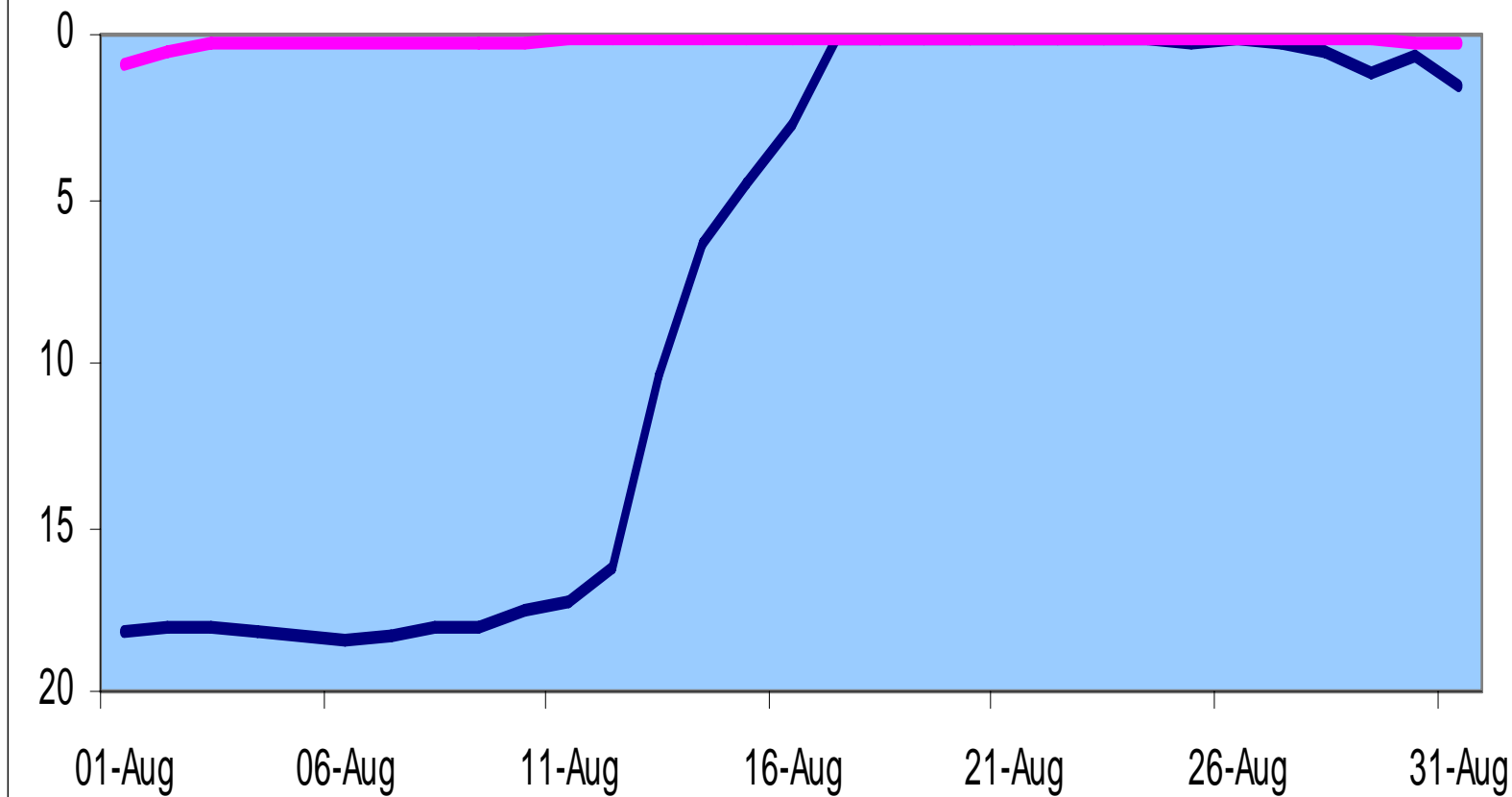
## Dissolved Oxygen mg/l



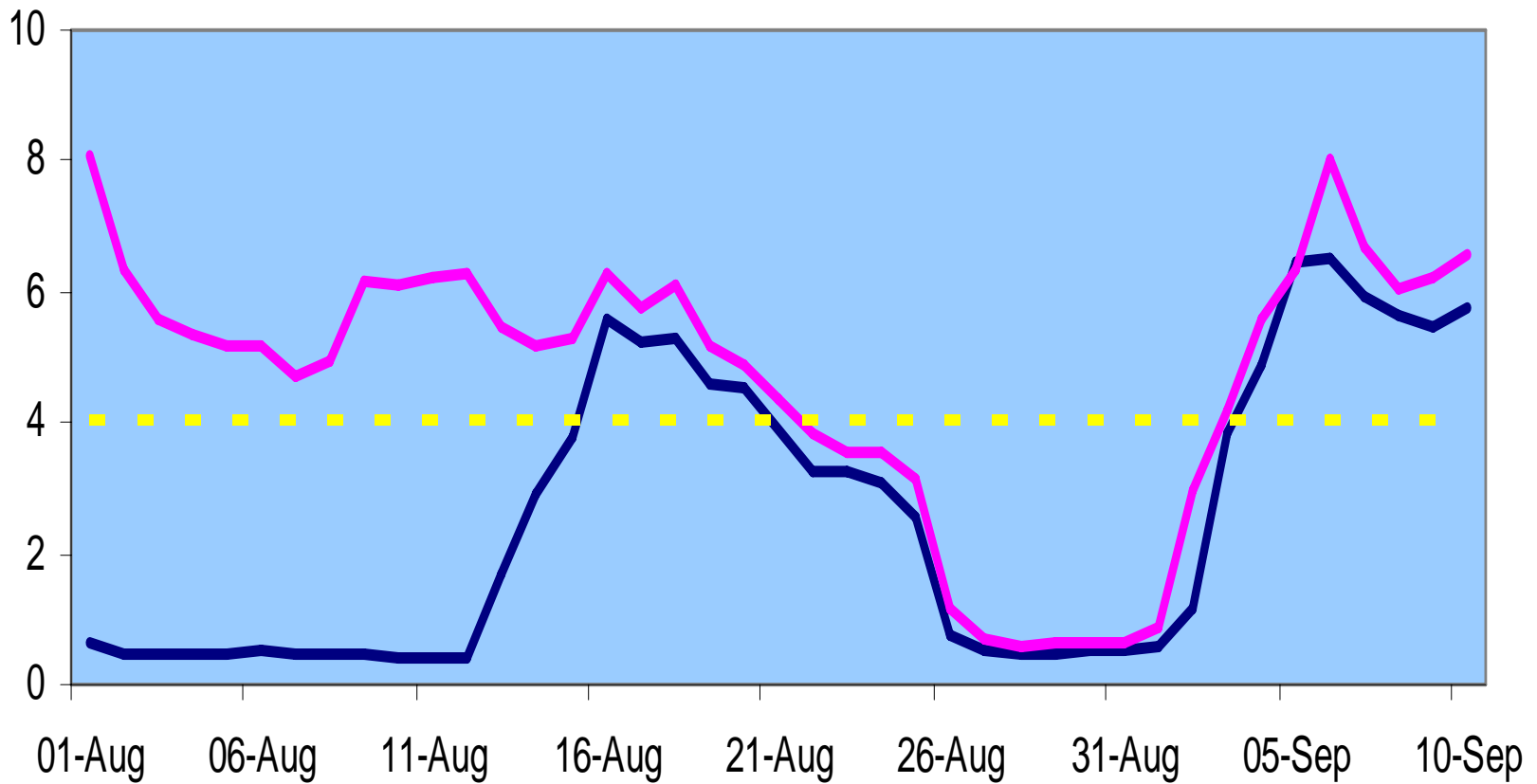
## Normal water column conditions in Quoile Pondage



# Salinity



## Dissolved Oxygen mg/l

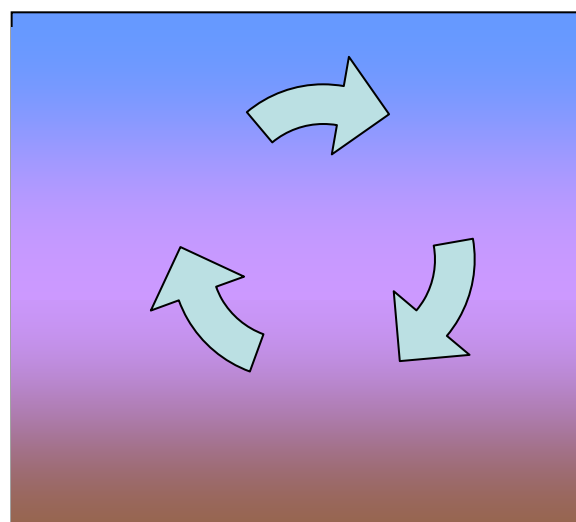
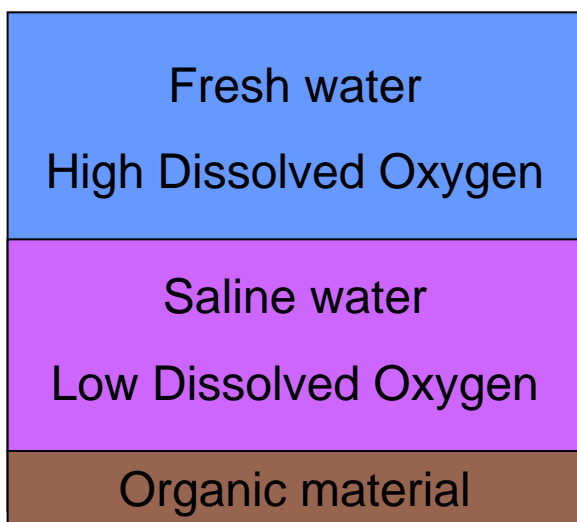




**Normal Conditions**

**Flood Water Inundation**

**Fishkill**



# Mourne Observer

LARGEST SALES IN COUNTY DOWN

WEDNESDAY 20 JUNE, 2007

DOWN EDITION

www.mourneobserver.com

58th YEAR

85p



**MBE for autism  
campaigner Liz**

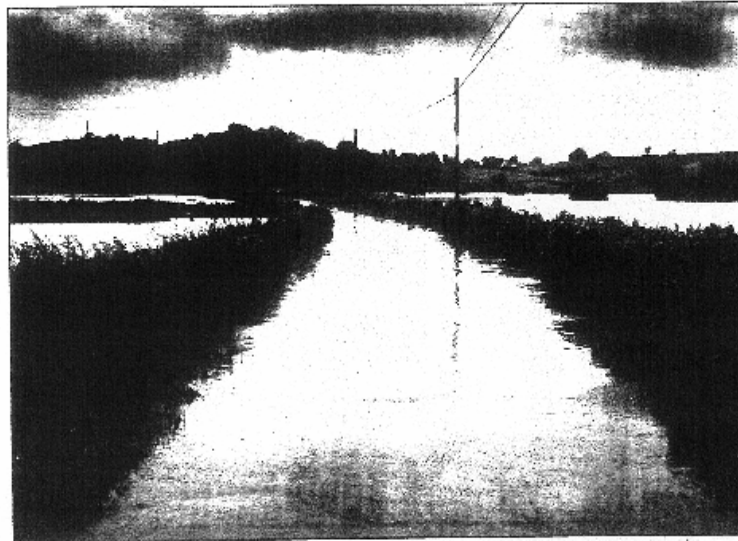
PAGE 34

**Loughinisland atrocity:  
Families want the truth**

PAGE 14



## FLOODS RETURN



By Gavin Lonergan

AN all too familiar foe returned to County Down last week with flood waters causing havoc in local towns and villages after the extended period of heavy rain.

Flooding and high water in Carrick and Seafield suffered particularly badly on Friday but no corner of the district remained untouched, as can be seen from our picture of the Lough area near Bellaghy (left).

However, despite the horrendous conditions the responsible Government ministers and public representatives seem to be that it could have been a lot worse, and justice has been directed towards the various agencies involved in the disaster operation.

South Down MP Edie McMeade voiced his concern, saying: "It is actually comforting to see homes flooded and furniture and possessions destroyed, as well as the ongoing difficulties of trying to get people's cars cleaned up and returned to them."

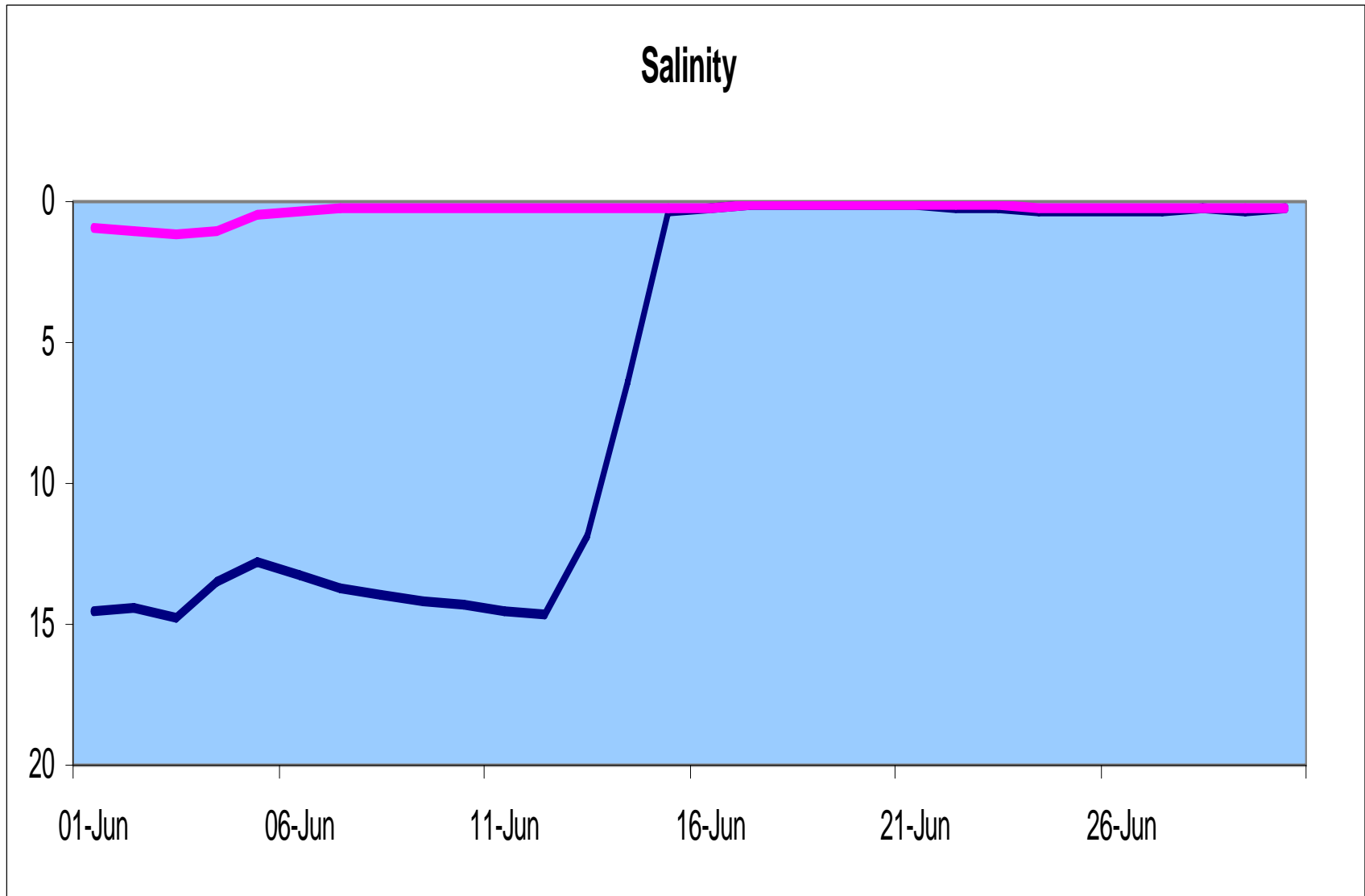
See story on page 20

**Government and Council workers called  
into action after heavy rain takes its toll**

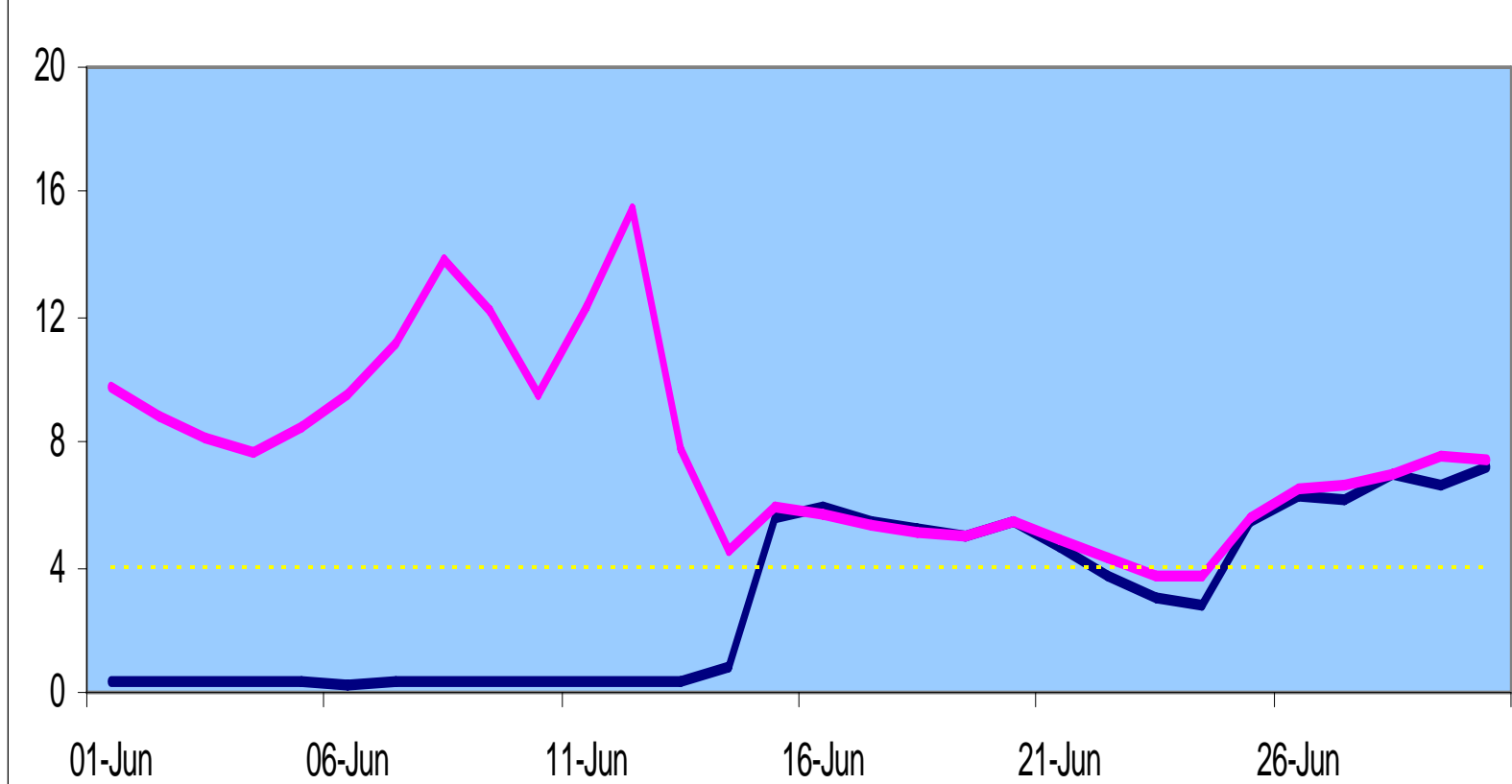
**Jenny's  
& Jenny's Plus**  
CARRYDUFF SHOPPING CENTRE,  
CARRYDUFF  
Tel. 028 9081 4415

**HALF PRICE  
SALE**

# Salinity



## Dissolved Oxygen mg/l



# Water Pollution Hotline

## 0800 807060

Our aim is to protect, conserve  
and promote our natural and built  
environment for the benefit of  
present and future generations.

