

Selection of  
Local Management Areas  
for Implementation of  
River Basin Management Plans

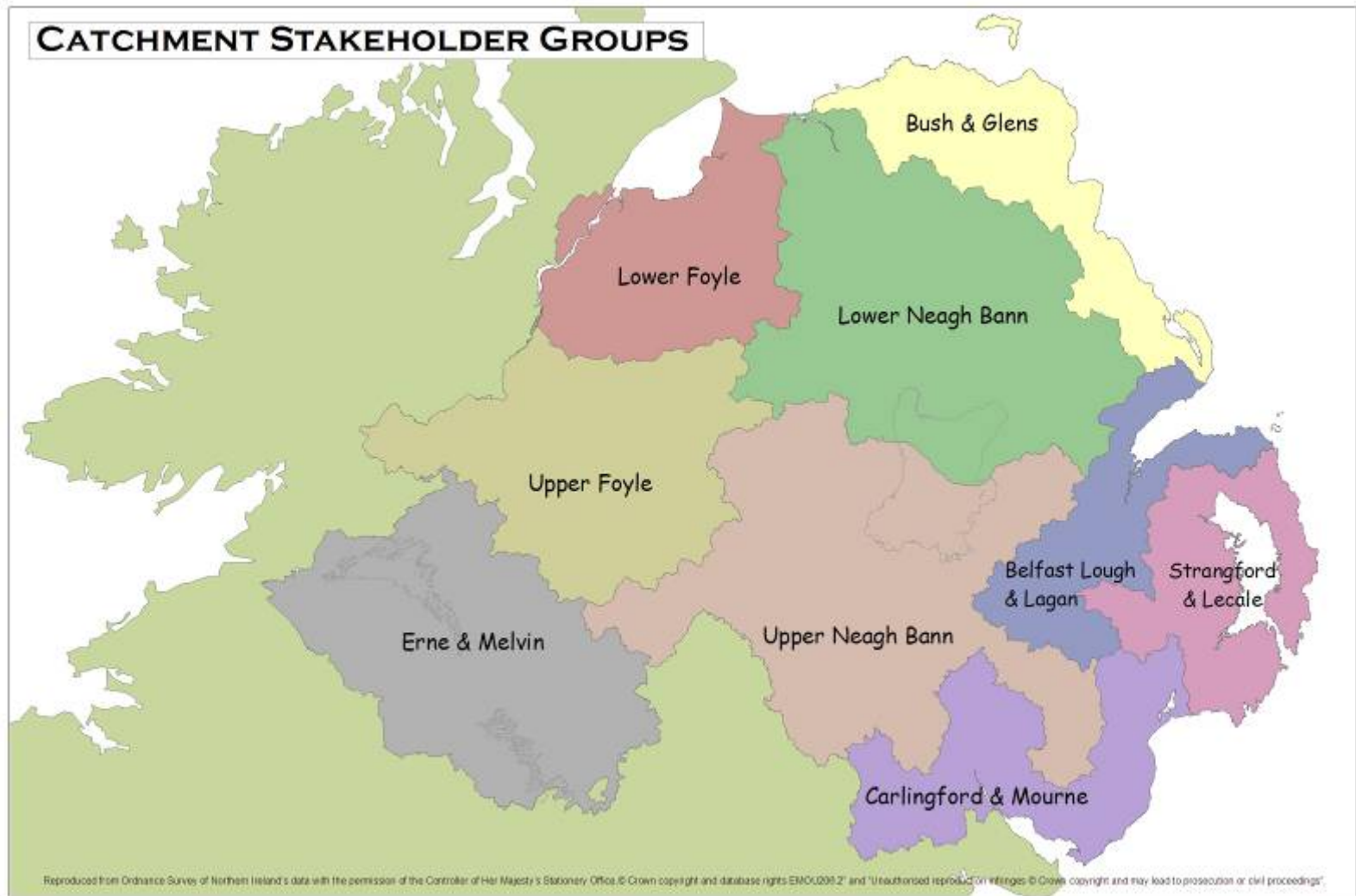
**Strangford and Lecale  
Catchment Stakeholder Group**

Devina Park – NIEA  
River Basin Planning

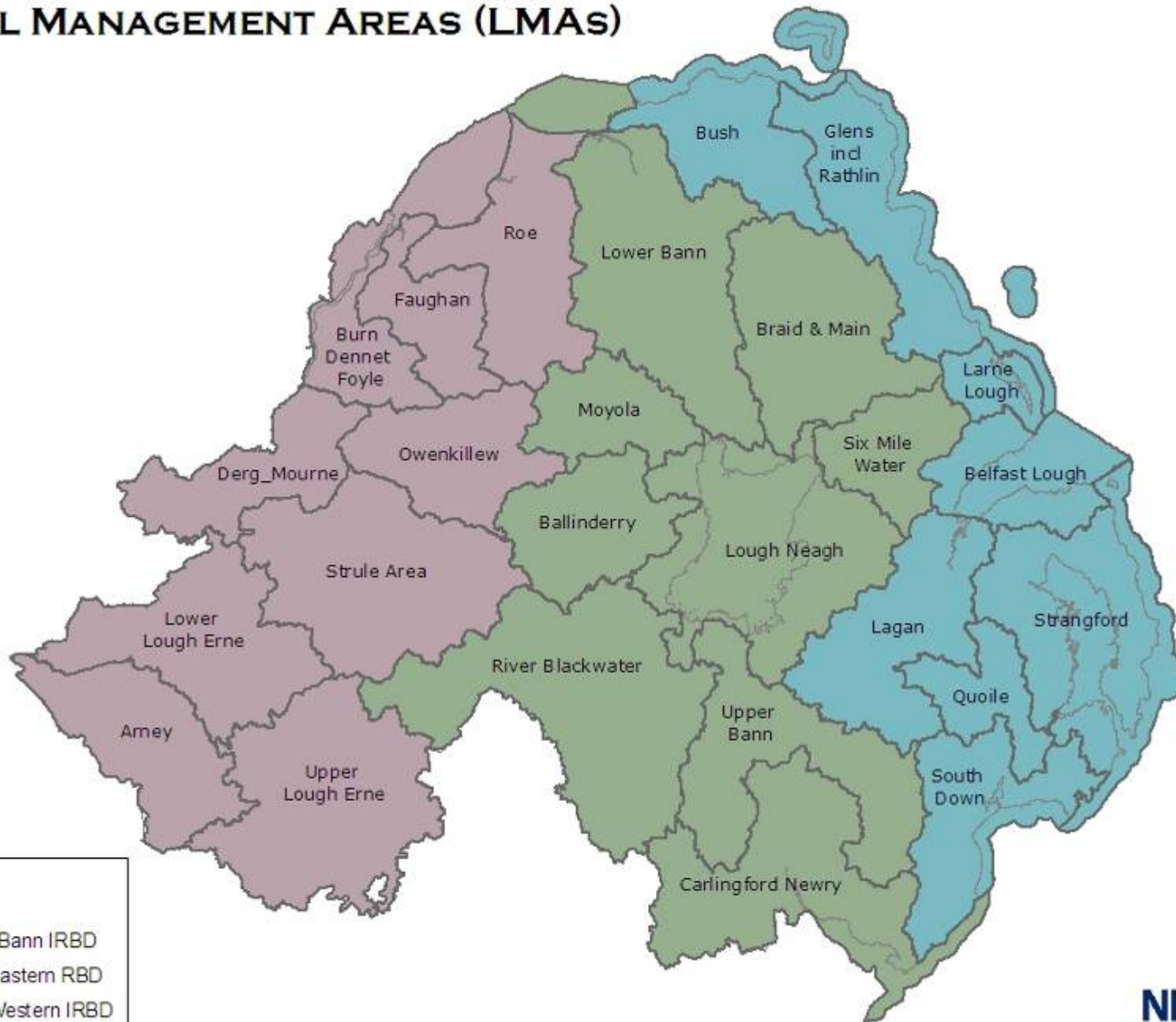
# Implementation of the River Basin Management Plans

- The Plans cover the period 2009 – 2015
- Need to focus on the local nature of the plans
- Need to develop an implementation programme over the six year cycle

## CATCHMENT STAKEHOLDER GROUPS



# LOCAL MANAGEMENT AREAS (LMAs)



- LMA
- Neagh Bann IRBD
- North Eastern RBD
- North Western IRBD

# Why Work at an LMA Level ?

- To develop a localised approach to managing water bodies, yet provide a coherent and comprehensive overview of the pressures at a catchment level, it is proposed to develop action plans at the Local Management Area level (LMA).
- The LMAs represent the hydrological water sheds of the main rivers within the RBDs.
- In targeting resources to deliver good ecological quality, it is considered more effective to focus concerted action on a limited number LMAs.
- It is proposed to select 9 LMAs out of the 26 each year for detailed analysis, this would mean each LMA is assessed twice in each 6 year planning cycle.

- Ecological Elements

- Invertebrates

- Macrophytes

- Fish

- Pearl Mussels

# LMA Selection Process

- Percentage Failure and Severity of Failures

- % less than Good

- % less than Moderate

- % Bad

- Pressures and impacts assessment used if no classification data available

# Reason for Failure and Percentage Failure Spreadsheet

RWBID	Name WB		Overall Eco Status	Invertebrates	Macrophytes	Fish	Pearl Mussel	Diatoms	Phytoplankton	DO	Phosphorus	P+I status	SURFACE WATER STATUS
GBNI1NE050501004	Copeland Water	Belfast Lough	3									3	3
GBNI1NE050501118	Three Mile Water	Belfast Lough	4	4				4			3		4
GBNI1NE050501120	Woodburn River	Belfast Lough	4	3	3	4		3					4
GBNI1NE050502083	Crawfordsburn River	Belfast Lough	4	4							3		4
GBNI1NE050502084	Ballyholme River	Belfast Lough	5	5		5					3		5
GBNI3NE0028	Mourne	Belfast Lough	3		3				3		4		4
	Total No. WBs 7	No. < Good	6	4	2	2		2	1	0	4	1	6
	Rivers plus Lakes	No. <Mod	4	3	0	2		1	0	0	1	0	5
		No. Bad	1	1	0	1		0	0	0	0	0	1
		% < Good	85.7%	57.1%	28.6%	28.6%	0.0%	28.6%	14.3%	0.0%	57.1%	14.3%	85.7%
		% <Moderate	57.1%	42.9%	0.0%	28.6%	0.0%	14.3%	0.0%	0.0%	14.3%	0.0%	71.4%
		% Bad	14.3%	14.3%	0.0%	14.3%	0.0%	0.0%	0.0%	0.0%	0.0%	0.0%	14.3%

## In Summary:

- Classification data – indicator of impact
- Severity of impact – Bad > Moderate > Good

**Eco Score =**

**% < Good + % < Moderate + % Bad**

# Reason for Failure and Percentage Failure Spreadsheet

RWBID	Name WB		Overall Eco Status	Invertebrates	Macrophytes	Fish	Pearl Mussel	Diatoms	Phytoplankton	DO	Phosphorus	P+I status	SURFACE WATER STATUS
GBNI1NE050501004	Copeland Water	Belfast Lough	3									3	3
GBNI1NE050501118	Three Mile Water	Belfast Lough	4	4				4			3		4
GBNI1NE050501120	Woodburn River	Belfast Lough	4	3	3	4		3					4
GBNI1NE050502083	Crawfordsburn River	Belfast Lough	4	4							3		4
GBNI1NE050502084	Ballyholme River	Belfast Lough	5	5		5					3		5
GBNI3NE0028	Mourne	Belfast Lough	3		3				3		4		4
	Total No. WBs 7	No. < Good	6	4	2	2		2	1	0	4	1	6
	Rivers plus Lakes	No. < Mod	4	3	0	2		1	0	0	1	0	5
		No. Bad	1	1	0	1		0	0	0	0	0	1
		% < Good	85.7%	57.1%	28.6%	28.6%	0.0%	28.6%	14.3%	0.0%	57.1%	14.3%	85.7%
		% < Moderate	57.1%	42.9%	0.0%	28.6%	0.0%	14.3%	0.0%	0.0%	14.3%	0.0%	71.4%
		% Bad	14.3%	14.3%	0.0%	14.3%	0.0%	0.0%	0.0%	0.0%	0.0%	0.0%	14.3%

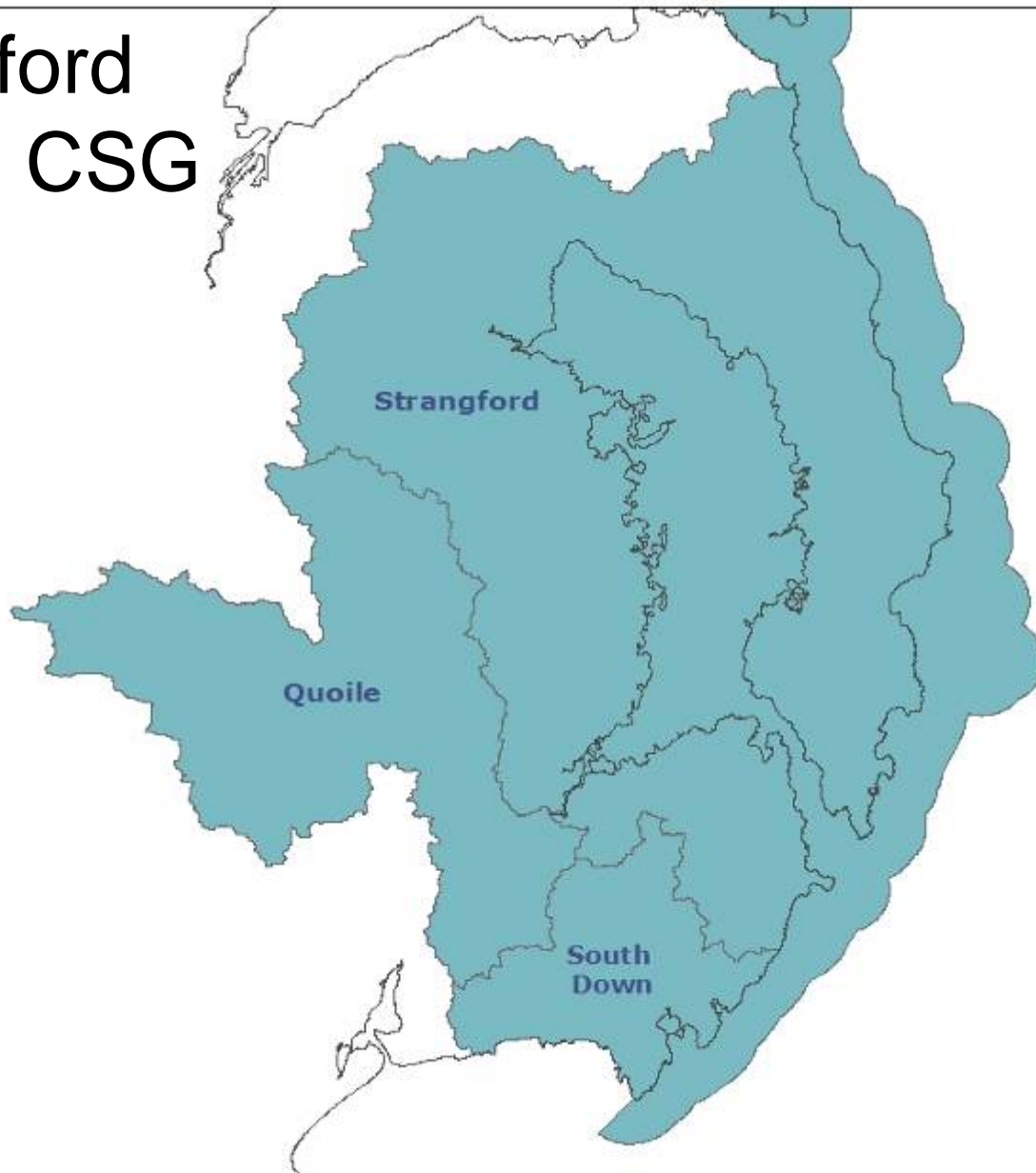
# Proportion of Failing Water bodies and Eco Score

NE Assessment Rating												
Man Area	% < Good	Invertebrates	Macrophytes	Fish	Pearl Mussel	P & I	Number WBs <Mod	% <Mod	Number WBs <Bad	%Bad	Eco Score	Number of WBs
Glen & Rathlin	47.6%	33.3%	0.0%	4.8%	0%	9.5%	1	4.8%	0	0.0%	52.4	21
Bush	100.0%	88.2%	0.0%	0.0%	0%	5.9%	2	23.5%	0	0.0%	123.5	17
Larne Lough	50.0%	0.0%	0.0%	0.0%	0%	0.0%	1	0.0%	1	0.0%	50.0	2
Belfast Lough	85.7%	57.1%	28.6%	28.6%	0%	14.3%	1	57.1%	0	14.3%	157.1	7
Lagan	100.0%	81.8%	27.3%	4.5%	0%	13.6%	1	40.9%	1	18.2%	159.1	22
Quoile	72.7%	54.5%	27.3%	9.1%	0%	9.1%	2	27.3%	0	0.0%	100.0	11
Strangford	100.0%	86.7%	26.7%	13.3%	0%	0.0%	11	73.3%	3	20.0%	193.3	15
South Down	78.9%	63.2%	31.6%	5.3%	0%	0.0%	2	21.1%	0	5.3%	105.3	19

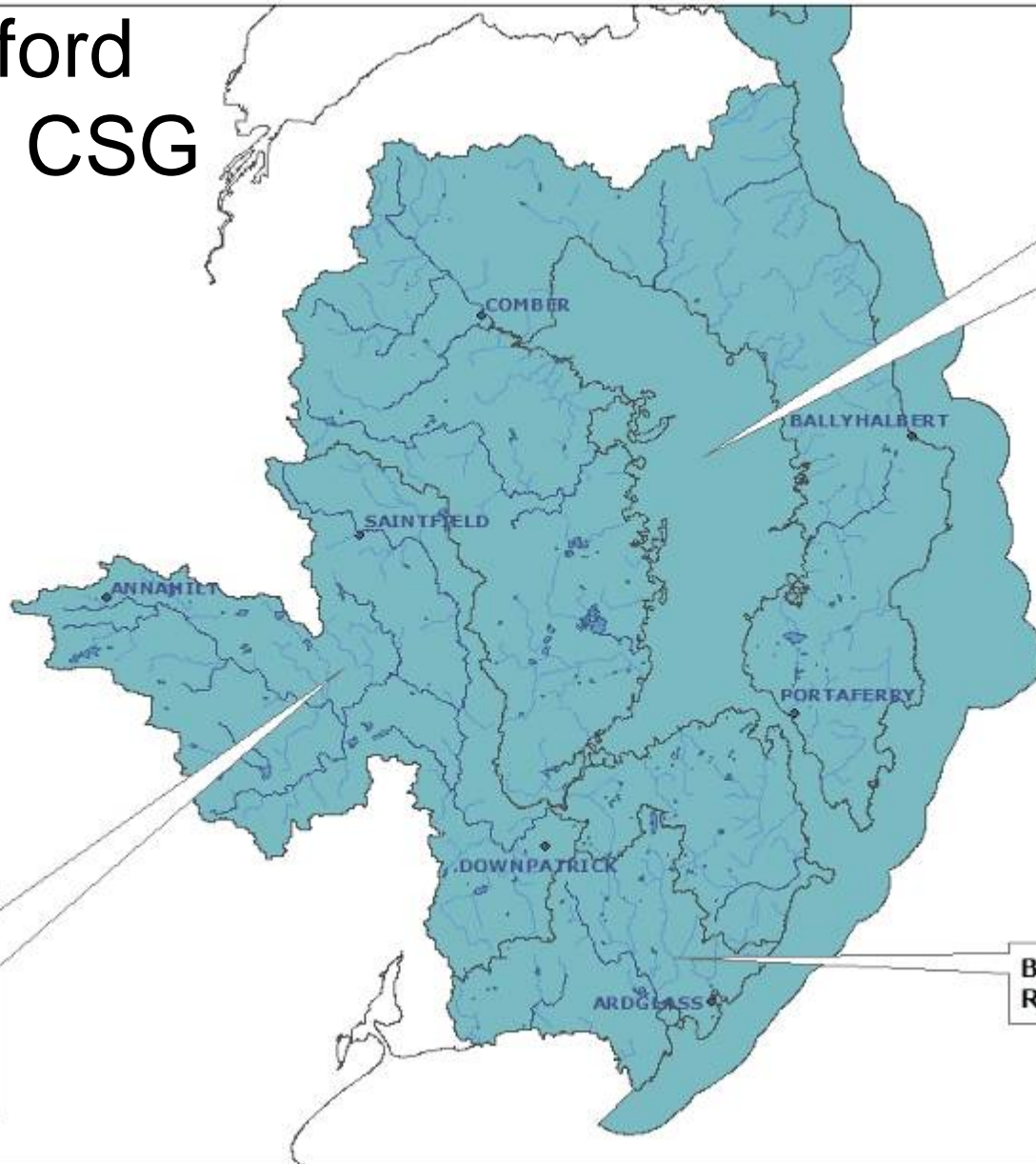
# LMA Implementation Plan Selection

Option 1 – Northern Ireland		Option 2 – by River Basin District		Option 3 – by CSG		CSG Area
Local Management Area	Eco Score	Local Management Area	Eco Score	Local Management Area	Eco Score	
<b>Strangford</b>	193.3	<b>Burn Dennet &amp; Foyle</b>	100.0	<b>Lower Lough Erne</b>	87.9	<b>Erne &amp; Melvin</b>
<b>Lagan</b>	159.1	<b>Lower Lough Erne</b>	87.9	Upper Lough Erne	72.1	
<b>Belfast Lough</b>	157.1	<b>Upper Lough Erne</b>	72.1	Arney	39.3	
<b>Ballinderry</b>	137.5	Roe	60.0	<b>Owenkillew</b>	50.0	<b>Upper Foyle</b>
<b>Lough Neagh</b>	123.8	Owenkillew	50.0	Derg& Mourne	47.1	
<b>Bush</b>	123.5	Derg & Mourne	47.1	Strule	45.0	
<b>Blackwater</b>	121.6	Strule	45.0	<b>Burn Dennet &amp; Foyle</b>	100.0	<b>Lower Foyle</b>
<b>Upper Bann</b>	110.7	Arney	39.3	Roe	60.0	
<b>South Down</b>	105.3	Faughan	30.0	Faughan	30.0	
Quoile	100.0	<b>Ballinderry</b>	137.5	<b>Ballinderry</b>	137.5	<b>Upper Neagh Bann</b>
Burn Dennet & Foyle	100.0	<b>Lough Neagh</b>	123.8	<b>Blackwater</b>	121.6	
Lower Bann	97.5	<b>Blackwater</b>	121.6	Upper Bann	110.7	
Carlingford & Newry	91.4	Upper Bann	110.7	<b>Lough Neagh</b>	123.8	<b>Lower Neagh Bann</b>
Lower Lough Erne	87.9	Lower Bann	97.5	Lower Bann	97.5	
Moyola	78.9	Carlingford & Newry	91.4	Moyola	78.9	
Six Mile	75.0	Moyola	78.9	Six Mile	75.0	
Upper Lough Erne	72.1	Six Mile	75.0	Braid & Main	51.4	
Roe	60.0	Braid & Main	51.4	<b>South Down</b>	105.3	<b>Carlingford &amp; Mourne</b>
				Carlingford & Newry	91.4	
Glens	52.4	<b>Strangford</b>	193.3			
Braid & Main	51.4	<b>Lagan</b>	159.1	<b>Strangford</b>	193.3	<b>Strangford &amp; Lecale</b>
Owenkillew	50.0	<b>Belfast L</b>	157.1	Quoile	100.0	
Larne	50.0	<b>Bush</b>	123.5	<b>Lagan</b>	159.1	<b>Belfast &amp; Lagan</b>
Derg & Mourne	47.1	<b>South Down</b>	105.3	<b>Belfast L</b>	157.1	
Strule	45.0	Quoile	100.0	<b>Bush</b>	123.5	<b>Bush &amp; Glens</b>
Arney	39.3	Glens	52.4	Glens	52.4	
Faughan	30.0	Larne	50.0	Larne	50.0	

# Strangford & Lecale CSG



# Strangford & Lecale CSG

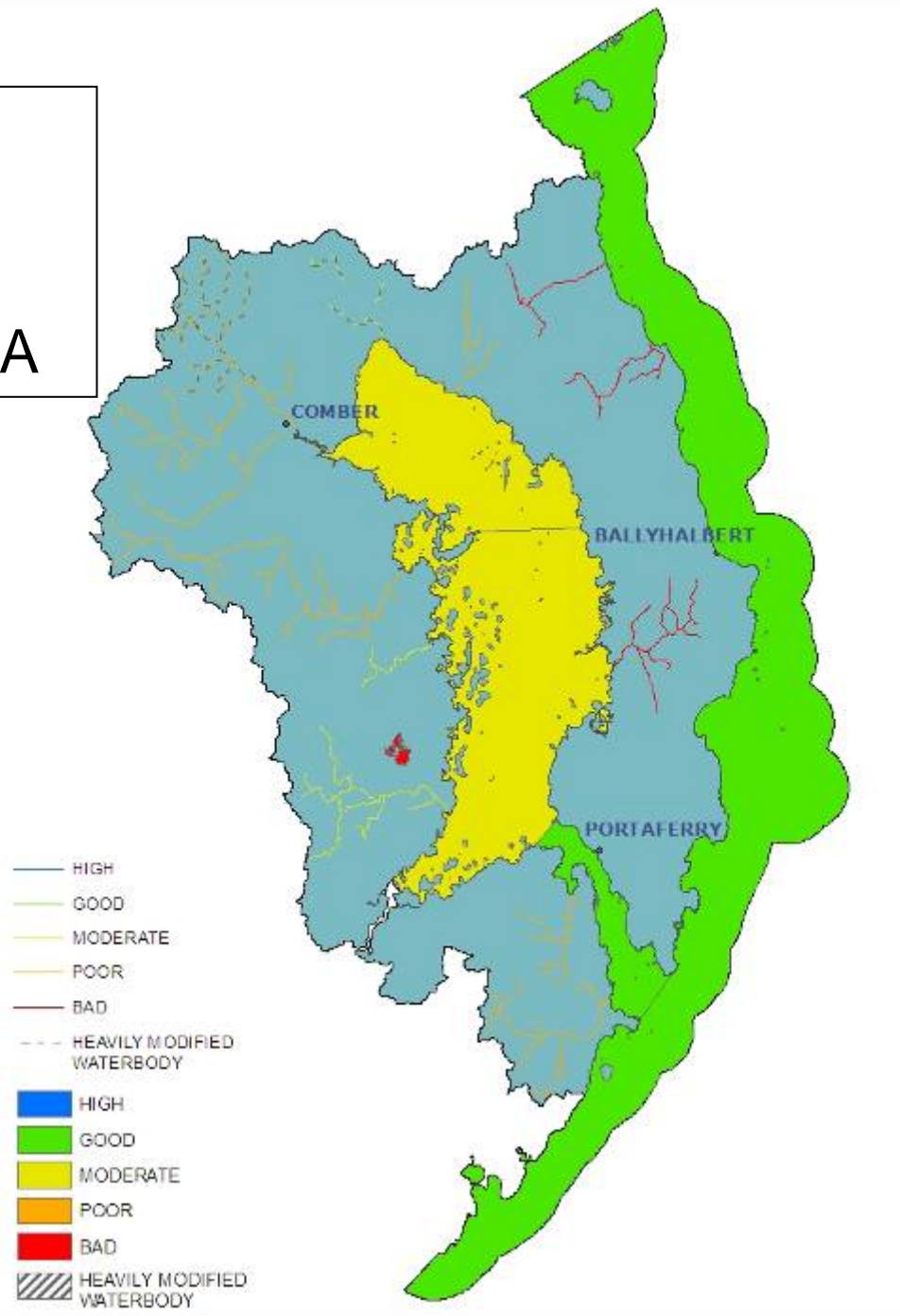


Blackstaff (Ards)  
Cunning Burn  
Eler (Comber) River  
Ballystockart River  
Blackwater (Ards) River  
Dibney River  
Ballyarnet Burn

Ballynahinch River  
Drunaness  
Glasswater River  
Annacloy River  
Quoile River  
Quoile Estuary

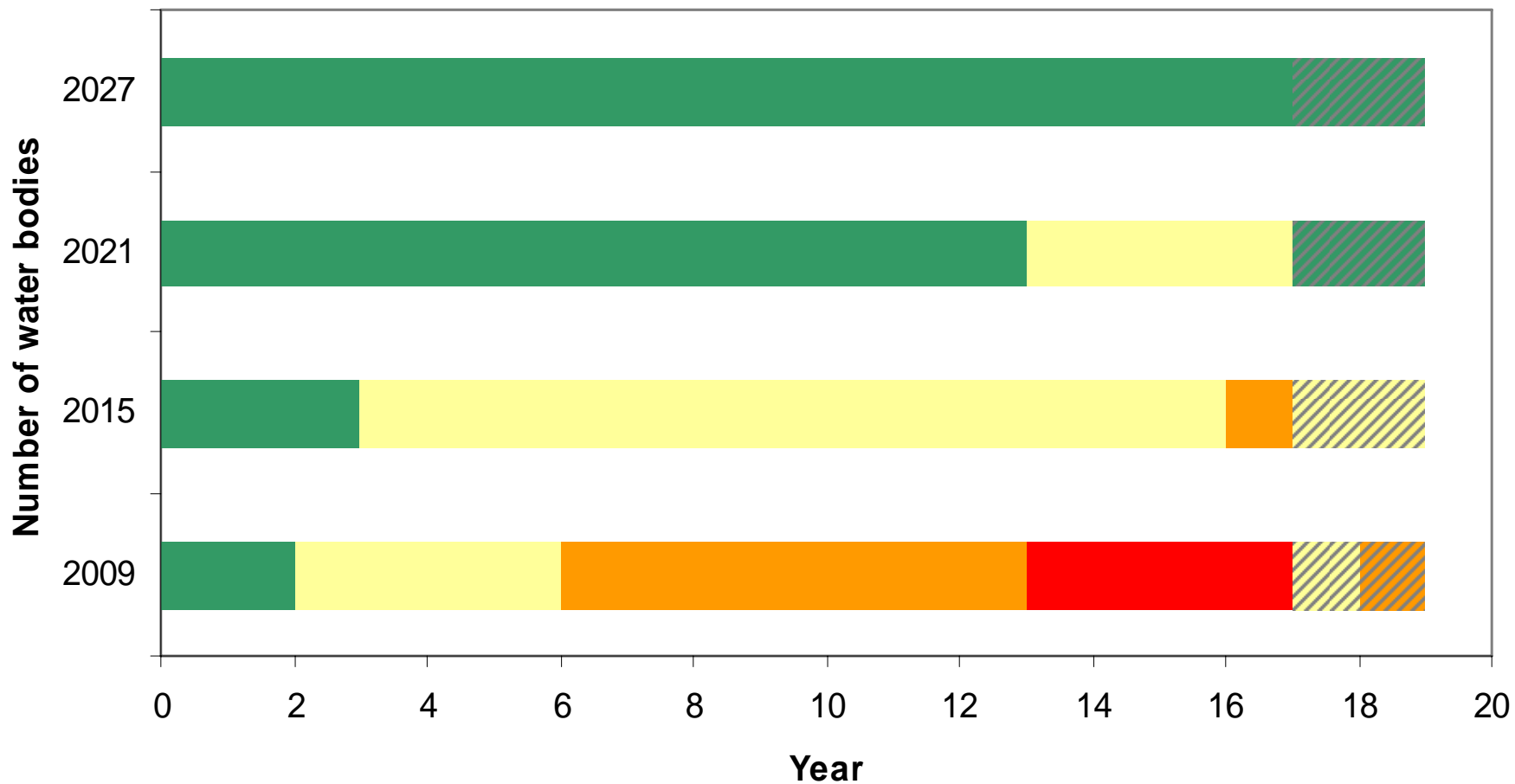
Ballyviggis Stream  
Rathmullan Burn

# 2009 Classification Status – Strangford LMA



## Current status and proposed objectives in the Strangford LMA

■ High 
 ■ Good 
 ■ Moderate 
 ■ Poor 
 ■ Bad 
 ■ GEP 
 ■ MEP 
 ■ PEP 
 ■ BEP



# Proposed Implementation Programme for Strangford and Lecale CSG

<b>Programme Year</b>	<b>LMA to focus attention on</b>
2010	Strangford
2011	Quoile
<b>Programme Year</b>	<b>Review situation in LMA</b>
2013	Strangford
2014	Quoile

**Any Questions ?**  
**Discussion / Suggestions?**