

NIEA Water Management Unit: Water Pollution Incidents and Enforcement 2008 - Annual Report Data



Water Pollution Incidents and Enforcement, 2008

Annual Report



Water Pollution Incidents and Enforcement 2008

This web based report presents statistics relating to water pollution incidents throughout Northern Ireland investigated by, or on behalf of, the Northern Ireland Environment Agency during 2008. NIEA responded to 2244 reports of water pollution in 2008, a decrease of 2% from 2007. This equates to over 6 investigations per day. NIEA substantiated (confirmed) that 1237 incidents, 55.1% of those reported, had an impact on the water quality of the receiving watercourse.

Pollution incidents are classified by Source (where the pollution originates), Category (the type of pollution identified), Cause (why the incident occurred) and Severity (the environmental impact of the pollution).

By Source, in 2008 *Farming* accounted for the largest number of substantiated incidents investigated by NIEA (26.4.0%), followed by *Northern Ireland Water Ltd* (22.4%) and *Industry* (22.2%). This is illustrated in Figure 1.

By Category, in 2008 *Sewage* (34.6%), *Agriculture* (25.6%) and *Oil* (16.3%) continued the trend from 2007, accounting for the largest proportion of pollutant types (76.5%) in respect of substantiated incidents. This is also illustrated in Figure 1.

The main Causes of substantiated water pollution incidents during 2008 were *Equipment Failure* (20.0%), *Unknown Cause* (20.4%) and *Poor Working Practice* (15.4%).

A total of 249 High and Medium severity incidents were investigated during 2008. This was an increase of 10.0% compared with 2007 figures (226). Farming was responsible for the largest number of High and Medium severity incidents in 2008 accounting for 37.3% (93 incidents). In 2008, NIEA responded to 91.6% of substantiated High and Medium Severity incidents within set time targets.

As of 23 October 2009, for the incidents that occurred during 2008, NIEA has issued 77 warning letters and submitted 41 cases to the Public Prosecution Service (PPS) (formerly the Office of the Director of Public Prosecutions) with a recommendation for prosecution. To date, 22 of these cases have resulted in convictions. A further 19 cases remain pending.

As of 23 October 2009, for the incidents that occurred during 2007, 48 cases were submitted to the PPS with a recommendation for prosecution. To date, 38 cases have been heard in the Magistrate's Courts, with 100.0% resulting in convictions. Of the 38 convictions to date for pollution incidents and consent breaches detected during 2007, the total of fines so far imposed by the courts is £56,700.00. These fines ranged from £100 to £5,000, with an average fine of £1,492. Of the 48 cases taken by NIEA under the Water (Northern Ireland) Order 1999, the *Agricultural discharges* Category accounted for 25 (52.1%), with the remaining 23 (47.9%) made up of *Breach of Consent, Chemical, Non Agricultural Waste, Oil, Sewage and Other* Categories.

The **Water Pollution Hotline (0800 80 70 60)**, continues to be promoted by NIEA, and its use has steadily increased since its launch. In 2008, 950 water pollution incidents were reported via the Hotline.

Water Pollution Incidents and Enforcement Statistics 2008 – How to Use this Report

There will be no stand alone Water Pollution Incidents and Enforcement annual report for 2008.

However, this workbook has been produced in order to provide the same datasets as in previous years.

For further information, this document may be cross referenced with the existing 2006

Water Pollution Incidents and Enforcement report at http://www.ni-environment.gov.uk/water/waterpollution/pol_respon.htm

Given the inherent delay between the time that pollution incidents, where prosecution is recommended, occur and subsequent court outcome, this report provides enforcement data for incidents that occurred in 2007 and an update on the situation for incidents that occurred in 2008.

| Page Number | | Description |
|--------------|-------------------------------|--|
| 2008 page 5 | Figure A | Distribution of Substantiated Pollution Incidents by Source and Category in 2008 |
| 2008 page 6 | Table 1 and Figure 1 | Reports of Water Pollution Received by NIEA 2001 to 2008 and NIEA Areas for Water Pollution Incident Management |
| 2008 page 7 | Table 2 and Figure 5 | Substantiated and Unsubstantiated Water Pollution Incidents 2001 to 2008 |
| 2008 page 8 | Figure 6 | Regional Distribution of Substantiated Pollution Incidents 2008 |
| 2008 page 9 | Table 3 and Figure 7 | Sources of Water Pollution 2008 |
| 2008 page 10 | Table 4 and Figure 8 | Regional Distribution of Pollution Incidents by Source 2008 |
| 2008 page 11 | Table 5 and Figure 9 | Percentage Change in Pollution Source 2007 to 2008 |
| 2008 page 12 | Figure 10 | Trend in Pollution Source 2001 to 2008 |
| 2008 page 13 | Table 6 and Figure 11 | Categories of Water Pollution 2008 |
| 2008 page 14 | Table 7 and Figure 12 | Regional Distribution of Pollution Incidents by Category 2008 |
| 2008 page 15 | Table 8 and Figure 13 | Percentage Change in Pollutant Category 2007 to 2008 |
| 2008 page 16 | Figure 14 | Trend in Pollutant Category 2001 - 2008 |
| 2008 page 17 | Table 9 and Figure 15 | Cause of Pollution Incidents in 2008 |
| 2008 page 18 | Table 10 and Figure 16 | Regional Distribution of Pollution Incidents by Cause in 2008 |
| 2008 page 19 | Figure 17 | Trend in Pollution Incident Cause 2001 to 2008 |
| 2008 page 20 | Table 11 and Figure 18 | Severity of Pollution Incidents 2008 |
| 2008 page 21 | Table 12 and Figure 19 | Regional Distribution of Pollution Incidents by Severity in 2008 |
| 2008 page 22 | Table 13 and Figure 20 | Severity of Pollution Incidents by Source 2008 |
| 2008 page 23 | Table 14 and Figure 21 | Severity of pollution Incidents by Category 2008 |
| 2008 page 24 | Table 15 and Figure 22 | Severity of Pollution Incidents by Cause 2008 |
| 2008 page 25 | Table 16 and Figure 23 | Response Rate to High and Medium Severity Pollution Incidents 2008 |
| 2008 page 26 | Table 17 and Figure 24 | Response Rate to High and Medium Severity Pollution Incidents 2001 to 2008 |
| 2008 page 27 | Table 18 and Figure 25 | Sources of Pollution Causing FishKills in 2008 |
| 2008 page 28 | Table 19 and Figure 26 | Significance of FishKills by Pollutant Source 2008 |
| 2008 page 29 | Figure 27 | Trend in Pollution Source Causing FishKills 2001 to 2008 |
| 2008 page 30 | Table 20 | Summary of Cases Referred to PPS for Incidents that Occurred in 2007 |
| 2008 page 31 | Table 21 | Costs and Fines Imposed under the Water (NI) Order 1999, for Incidents that occurred in 2007 (As at 23 October 2009) |
| 2008 page 32 | Table 22 | Water Pollution Prosecution Cases and Warning Letters 2000 to 2007 |
| 2008 page 33 | Figure 28 | Water Pollution Prosecution Cases and Warning Letters 2000 to 2007 (See 2006 Water Pollution Incidents and Enforcement Report for Figures 2 to 4) |

Figure A: Distribution of Substantiated Pollution Incidents by Source and Category in 2008

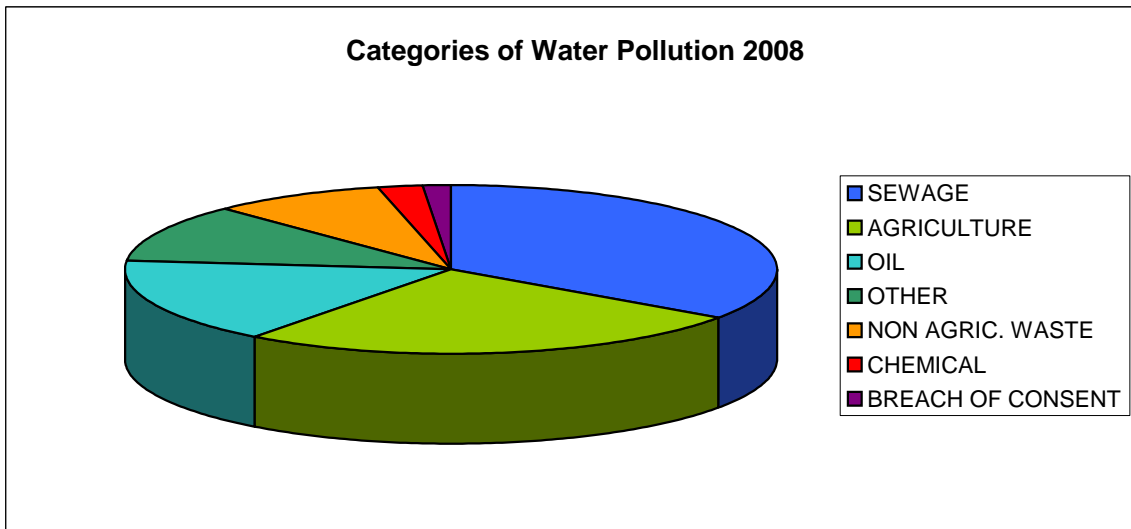
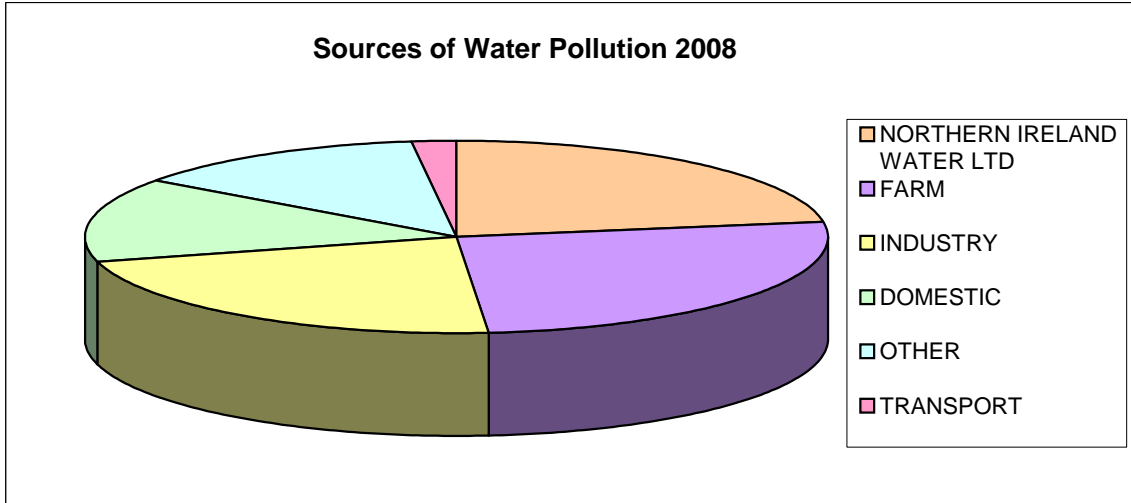


Table 1: Reports of Water Pollution Received by NIEA 2001 to 2008

| Water pollution reports received by: | | | | | | | |
|--------------------------------------|--------------------|-------------------|-----------|----------------------------|--|--------------------------------|--------------------------------|
| Year | WPH (Normal Hours) | WPH (After Hours) | Total WPH | NIEA direct (Normal Hours) | Regional Offices direct (Normal Hours) | FCB / LA direct (Normal Hours) | Total reports received by NIEA |
| 2001 | 436 | 279 | 715 | 333 | 1034 | 452 | 2534 |
| 2002 | 436 | 292 | 728 | 277 | 1039 | 419 | 2463 |
| 2003 | 476 | 292 | 768 | 358 | 977 | 396 | 2499 |
| 2004 | 552 | 284 | 836 | 324 | 787 | 260 | 2207 |
| 2005 | 641 | 301 | 942 | 265 | 789 | 187 | 2183 |
| 2006 | 651 | 294 | 945 | 237 | 726 | 173 | 2081 |
| 2007 | 625 | 296 | 921 | 186 | 1135 | 49 | 2291 |
| 2008 | 669 | 281 | 950 | 287 | 1007 | 0 | 2244 |

Figure 1: NIEA Areas for Water Pollution Incident Management

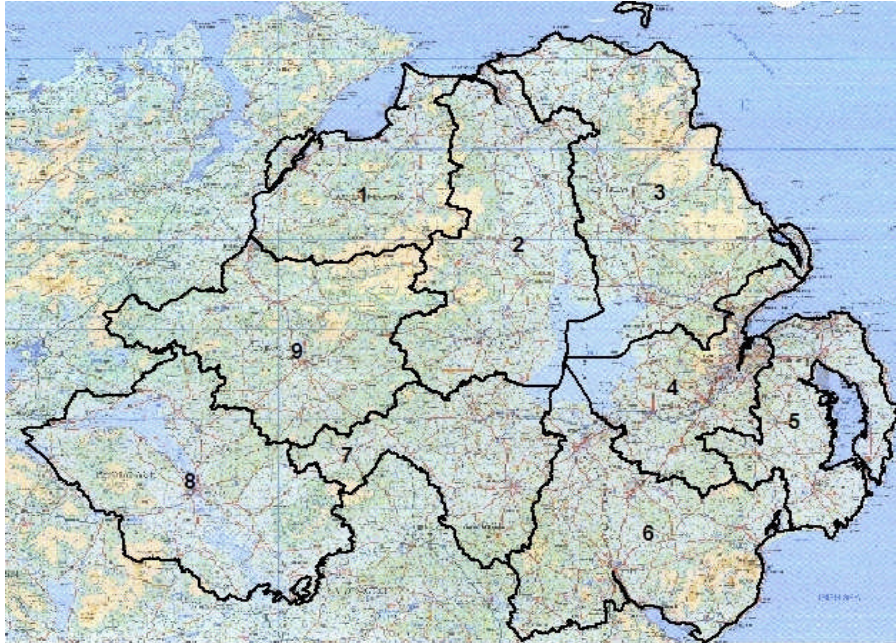
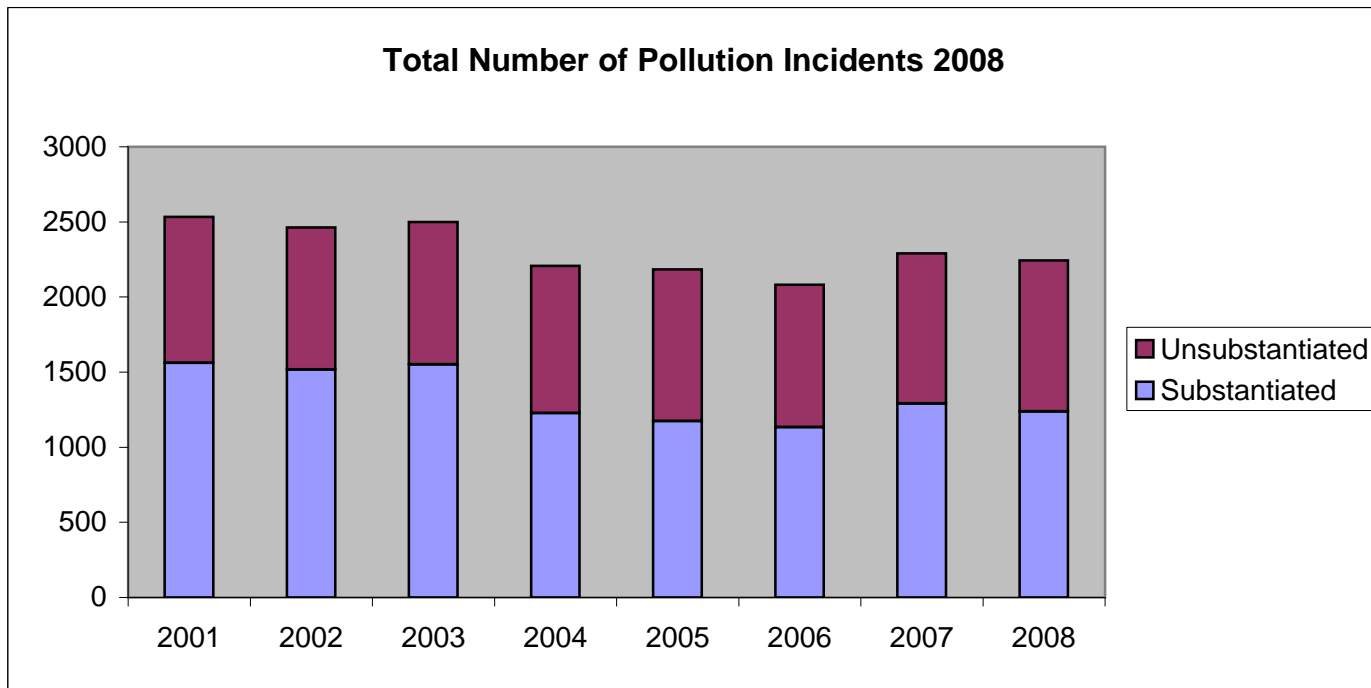


Table 2: Substantiated and Unsubstantiated Water Pollution Incidents 2001 to 2008

| | 2001 | 2002 | 2003 | 2004 | 2005 | 2006 | 2007 | 2008 |
|------------------------|-------------|-------------|-------------|-------------|-------------|-------------|-------------|-------------|
| Substantiated | 1561 | 1517 | 1552 | 1227 | 1174 | 1133 | 1292 | 1237 |
| Unsubstantiated | 973 | 946 | 947 | 980 | 1009 | 948 | 999 | 1007 |
| Total | 2534 | 2463 | 2499 | 2207 | 2183 | 2081 | 2291 | 2244 |

Figure 5: Total Number of Pollution Incidents Reported 2001 to 2008



Regional Distribution of Substantiated Pollution Incidents 2008

| Area | Total substantiated incidents |
|--------------|-------------------------------|
| 1 | 163 |
| 2 | 116 |
| 3 | 154 |
| 4 | 166 |
| 5 | 120 |
| 6 | 189 |
| 7 | 107 |
| 8 | 97 |
| 9 | 125 |
| Total | 1237 |

Figure 6: Regional Distribution of Substantiated Pollution Incidents 2008

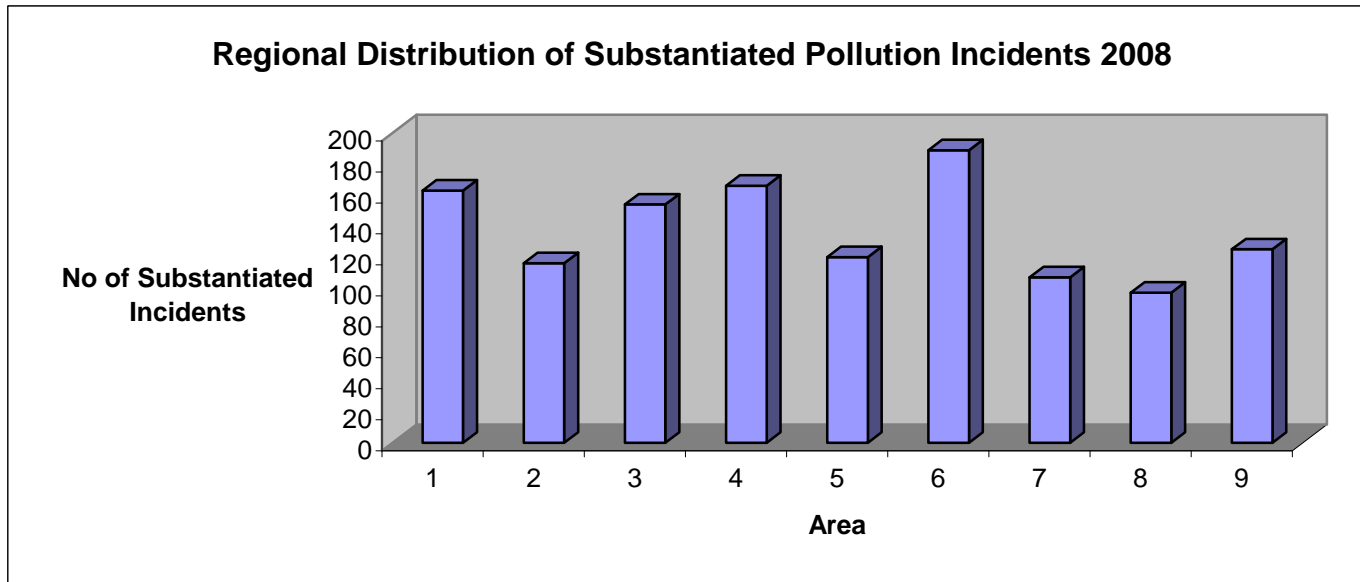


Table 3: Sources of Water Pollution 2008

| SOURCE | Total No. of Incidents | As a % of the total |
|----------------------------|------------------------|---------------------|
| NORTHERN IRELAND WATER LTD | 277 | 22.4% |
| FARM | 326 | 26.4% |
| INDUSTRY | 274 | 22.2% |
| DOMESTIC | 173 | 14.0% |
| OTHER | 164 | 13.3% |
| TRANSPORT | 23 | 1.9% |
| | 1237 | 100% |

Figure 7: Sources of Water Pollution 2008

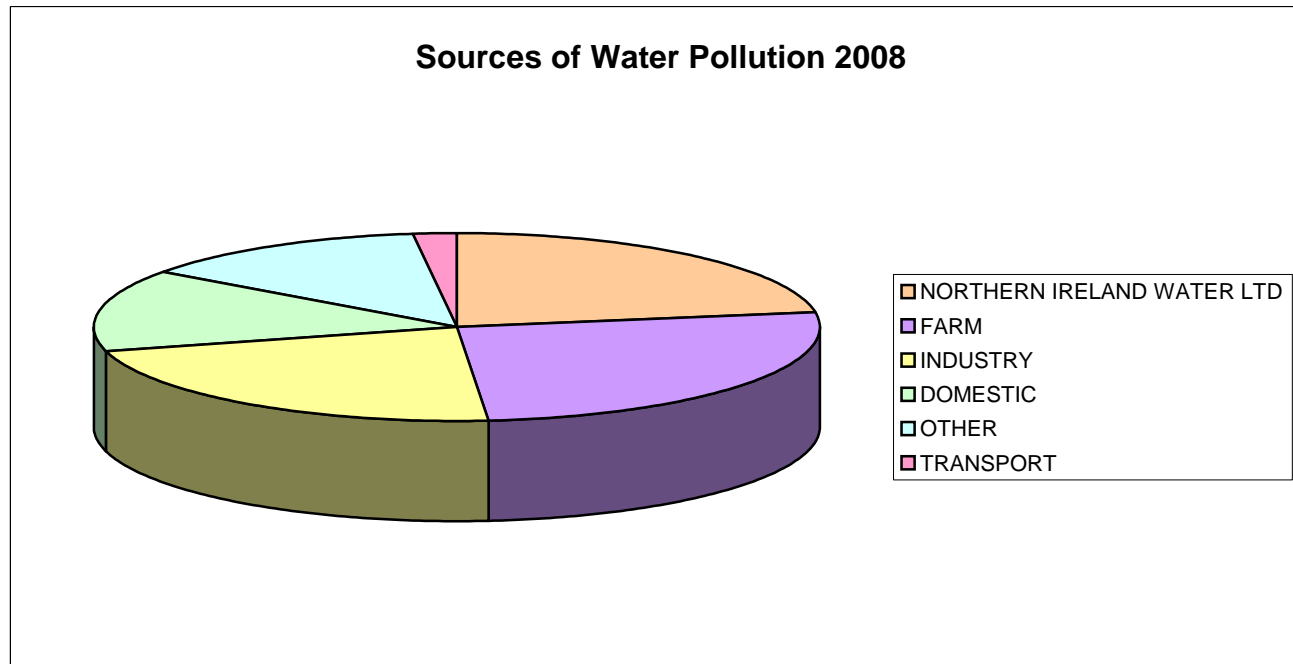


Table 4: Regional Distribution of Pollution Incidents by Source 2008

| Source | | | | | | | |
|--------------|------------|------------|----------------------------|------------|-----------|------------|-------------|
| Area | Industry | Farm | Northern Ireland Water Ltd | Domestic | Transport | Other | Total |
| 1 | 31 | 50 | 42 | 20 | 4 | 16 | 163 |
| 2 | 23 | 34 | 26 | 23 | 2 | 8 | 116 |
| 3 | 36 | 36 | 26 | 24 | 4 | 28 | 154 |
| 4 | 38 | 17 | 58 | 29 | 4 | 20 | 166 |
| 5 | 19 | 10 | 52 | 13 | 1 | 25 | 120 |
| 6 | 44 | 48 | 45 | 18 | 1 | 33 | 189 |
| 7 | 26 | 41 | 4 | 20 | 2 | 14 | 107 |
| 8 | 23 | 40 | 14 | 9 | 4 | 7 | 97 |
| 9 | 34 | 50 | 10 | 17 | 1 | 13 | 125 |
| Total | 274 | 326 | 277 | 173 | 23 | 164 | 1237 |

Figure 8: Regional Distribution of Pollution Incidents by Source 2008

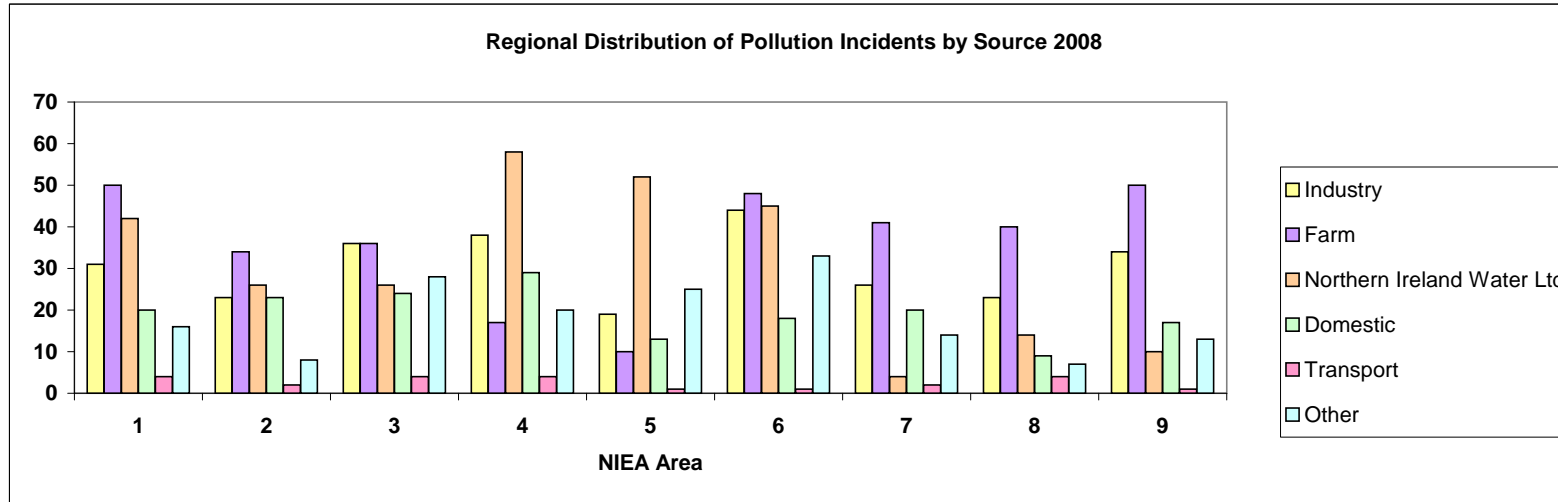
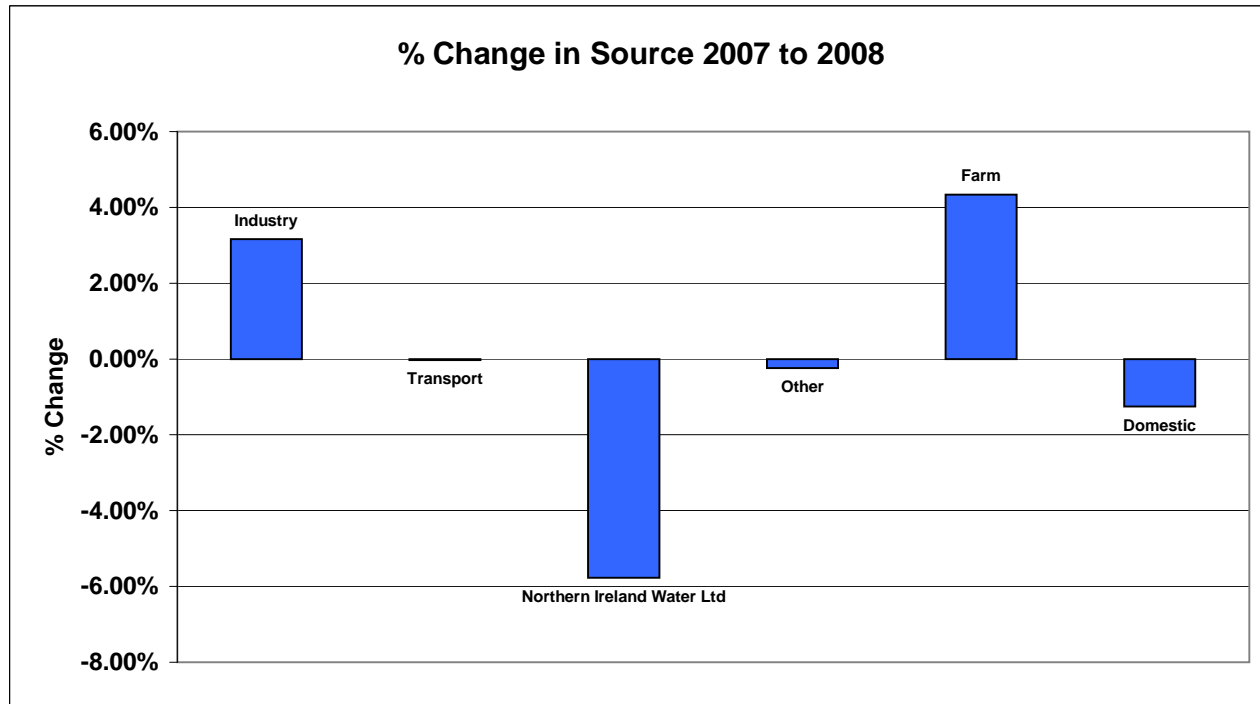


Table 5: Percentage Change in Pollution Source 2007 to 2008

| Source | 2007 | 2007 | 2008 | 2008 | % Change |
|----------------------------|-------------|--------|-------------|-------|----------|
| Industry | 246 | 19.04% | 274 | 22.2% | 3.16% |
| Transport | 25 | 1.93% | 23 | 1.9% | -0.03% |
| Northern Ireland Water Ltd | 364 | 28.17% | 277 | 22.4% | -5.77% |
| Other | 175 | 13.54% | 164 | 13.3% | -0.24% |
| Farm | 285 | 22.06% | 326 | 26.4% | 4.34% |
| Domestic | 197 | 15.25% | 173 | 14.0% | -1.25% |
| Total | 1292 | | 1237 | | |

Figure 9: Percentage Change in Pollution Source 2007 to 2008



Trend in Pollution Source 2001 to 2008

| | 2001 | 2002 | 2003 | 2004 | 2005 | 2006 | 2007 | 2008 |
|---------------------------|-------------|-------------|-------------|-------------|-------------|-------------|-------------|-------------|
| Farm | 490 | 467 | 380 | 296 | 273 | 228 | 285 | 326 |
| Water Service/NIWL | 308 | 258 | 364 | 289 | 308 | 285 | 364 | 277 |
| Industry | 365 | 351 | 337 | 302 | 227 | 263 | 246 | 274 |
| Domestic | 185 | 201 | 235 | 149 | 178 | 153 | 197 | 173 |
| Other | 172 | 184 | 197 | 154 | 157 | 170 | 175 | 164 |
| Transport | 41 | 56 | 39 | 37 | 31 | 34 | 25 | 23 |
| Total | 1561 | 1517 | 1552 | 1227 | 1174 | 1133 | 1292 | 1237 |

*NIWL = Northern Ireland Water Ltd

Figure 10: Trend in Pollution Source 2001 to 2008

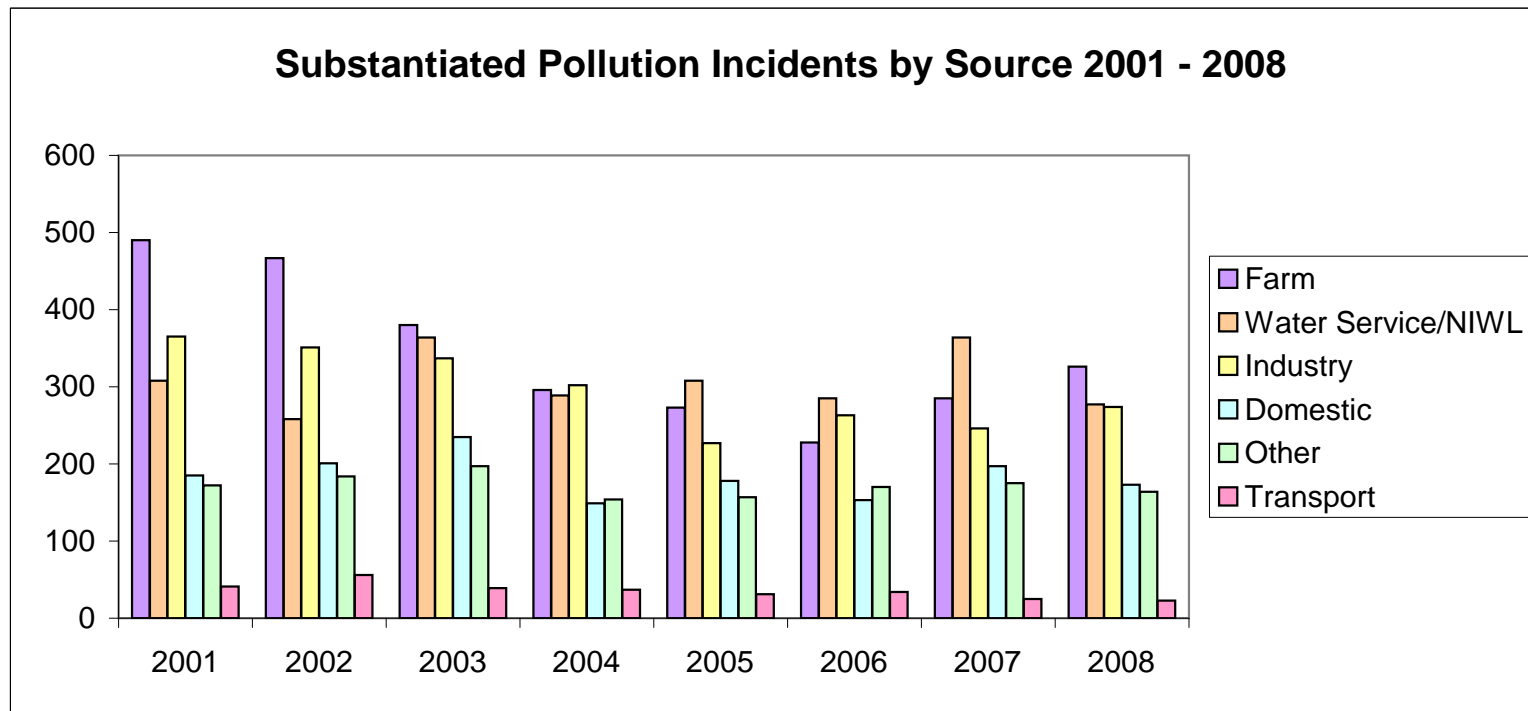


Table 6: Categories of Water Pollution 2008

| CATEGORY | Total No. of Incidents | As a % of the total |
|-------------------|------------------------|---------------------|
| SEWAGE | 428 | 34.6% |
| AGRICULTURE | 317 | 25.6% |
| OIL | 202 | 16.3% |
| OTHER | 140 | 11.3% |
| NON AGRIC. WASTE | 105 | 8.5% |
| CHEMICAL | 27 | 2.2% |
| BREACH OF CONSENT | 18 | 1.5% |
| Total | 1237 | 100 |

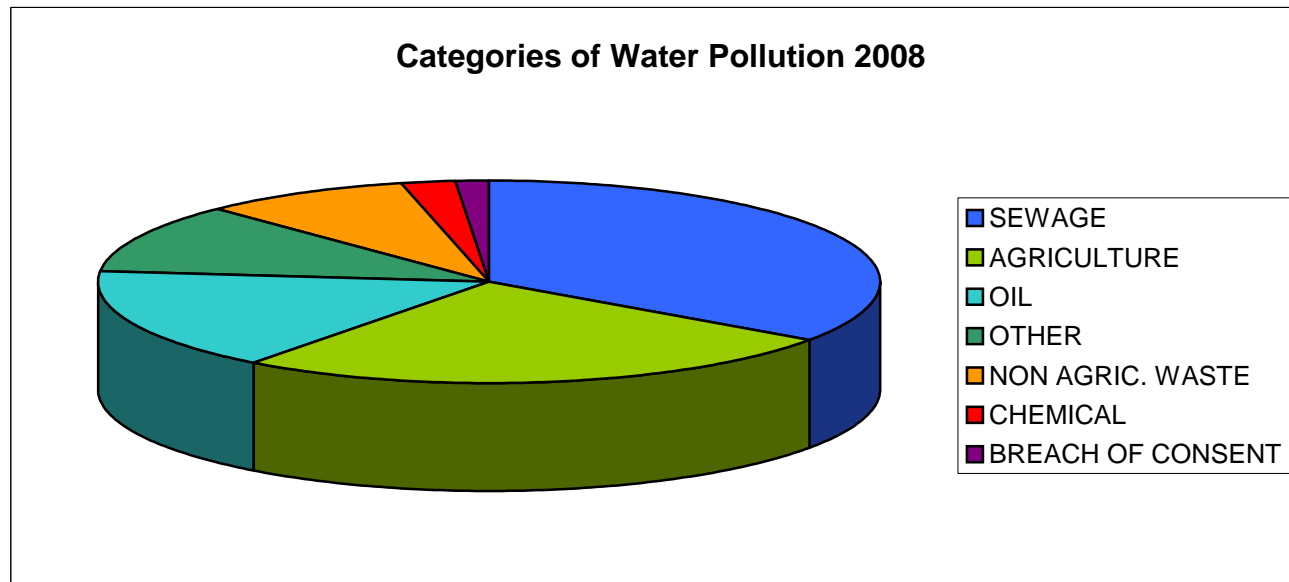
Figure 11: Categories of Water Pollution 2008

Table 7: Regional Distribution of Pollution Incidents by Category 2008

| Category | | | | | | | | |
|----------|----------|-------------|--------|-----|-----------------------|-------------------|-------|-------|
| Area | CHEMICAL | AGRICULTURE | SEWAGE | OIL | NON AGRIC. WASTE DIS. | BREACH OF CONSENT | OTHER | Total |
| 1 | 2 | 48 | 59 | 14 | 2 | 8 | 30 | 163 |
| 2 | 1 | 31 | 45 | 21 | 12 | 0 | 6 | 116 |
| 3 | 7 | 33 | 37 | 48 | 11 | 2 | 16 | 154 |
| 4 | 8 | 18 | 81 | 39 | 8 | 0 | 12 | 166 |
| 5 | 1 | 10 | 72 | 18 | 7 | 0 | 12 | 120 |
| 6 | 3 | 47 | 65 | 27 | 11 | 5 | 31 | 189 |
| 7 | 5 | 41 | 26 | 13 | 14 | 1 | 7 | 107 |
| 8 | 0 | 40 | 22 | 12 | 17 | 2 | 4 | 97 |
| 9 | 0 | 49 | 21 | 10 | 23 | 0 | 22 | 125 |
| | 27 | 317 | 428 | 202 | 105 | 18 | 140 | 1237 |

Figure 12: Regional Distribution of Pollution Incidents by Category 2008

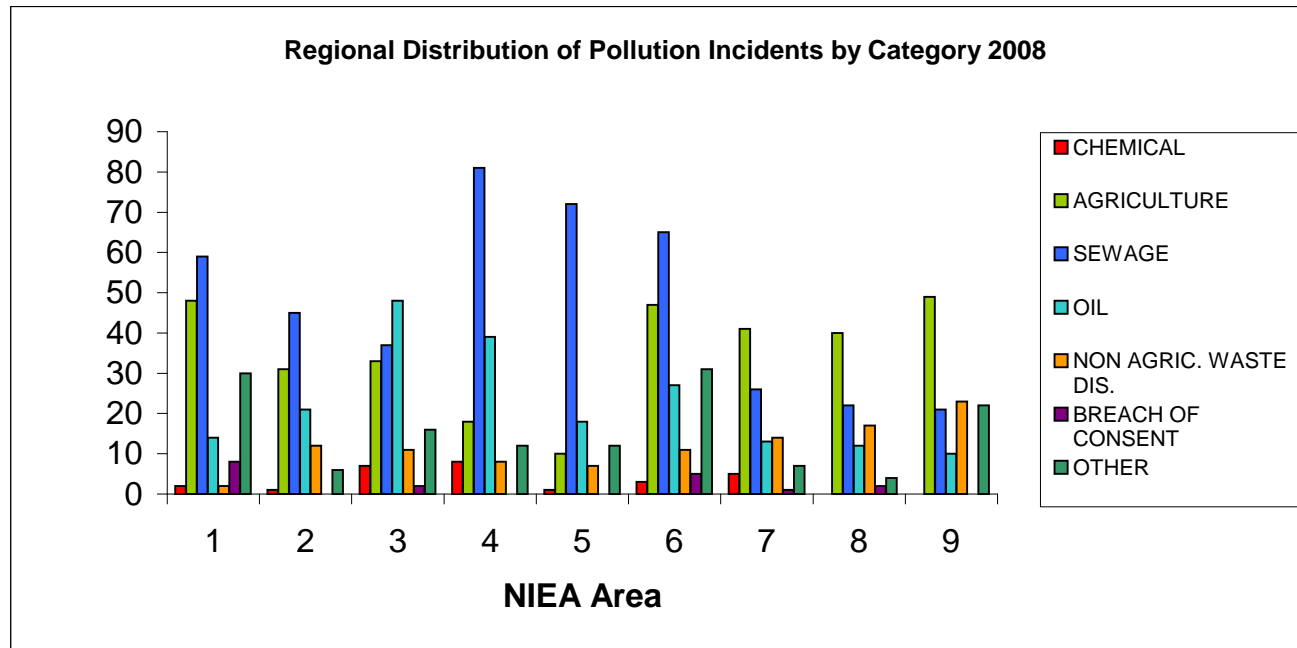
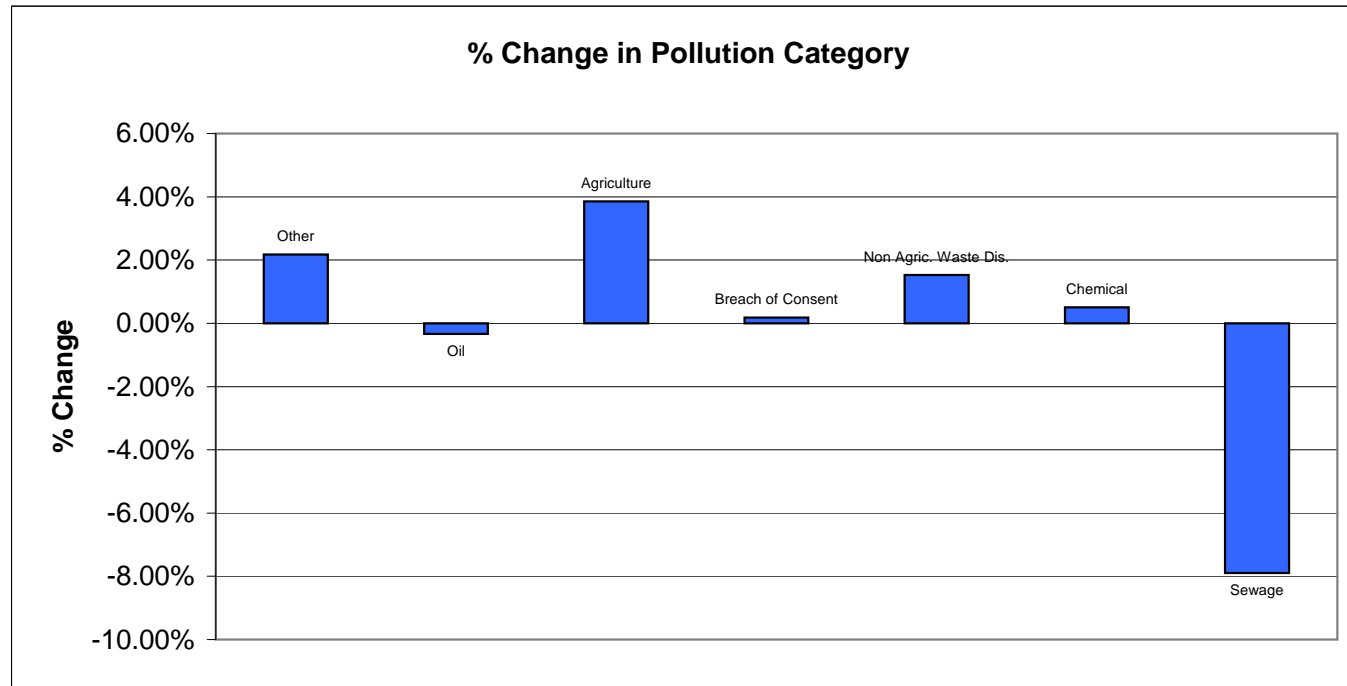


Table 8: Percentage Change in Pollutant Category 2007 to 2008

| Category | 2007 | 2007 | 2008 | 2008 | Overall % Change |
|-----------------------|-------------|--------|-------------|-------|------------------|
| Other | 118 | 9.13% | 140 | 11.3% | 2.17% |
| Oil | 215 | 16.64% | 202 | 16.3% | -0.34% |
| Agriculture | 281 | 21.75% | 317 | 25.6% | 3.85% |
| Breach of Consent | 17 | 1.32% | 18 | 1.5% | 0.18% |
| Non Agric. Waste Dis. | 90 | 6.97% | 105 | 8.5% | 1.53% |
| Chemical | 22 | 1.70% | 27 | 2.2% | 0.50% |
| Sewage | 549 | 42.49% | 428 | 34.6% | -7.89% |
| Total | 1292 | | 1237 | | |

Figure 13: Percentage Change in Pollutant Category 2007 to 2008



Trend in Pollutant Category 2001 - 2008

| | 2001 | 2002 | 2003 | 2004 | 2005 | 2006 | 2007 | 2008 |
|------------------------------|-------------|-------------|-------------|-------------|-------------|-------------|-------------|-------------|
| Sewage | 472 | 430 | 583 | 429 | 452 | 422 | 549 | 428 |
| Agriculture | 474 | 441 | 375 | 296 | 258 | 222 | 281 | 317 |
| Oil | 250 | 272 | 239 | 227 | 224 | 216 | 215 | 202 |
| Non Agric. Waste Dis. | 174 | 187 | 135 | 87 | 66 | 92 | 90 | 105 |
| Other | 84 | 95 | 111 | 128 | 124 | 116 | 118 | 140 |
| Chemical | 89 | 62 | 68 | 34 | 26 | 37 | 22 | 27 |
| Breach Of Consent | 18 | 30 | 41 | 26 | 24 | 28 | 17 | 18 |
| Total | 1561 | 1517 | 1552 | 1227 | 1174 | 1133 | 1292 | 1237 |

Figure 14: Trend in Pollutant Category 2001 - 2008

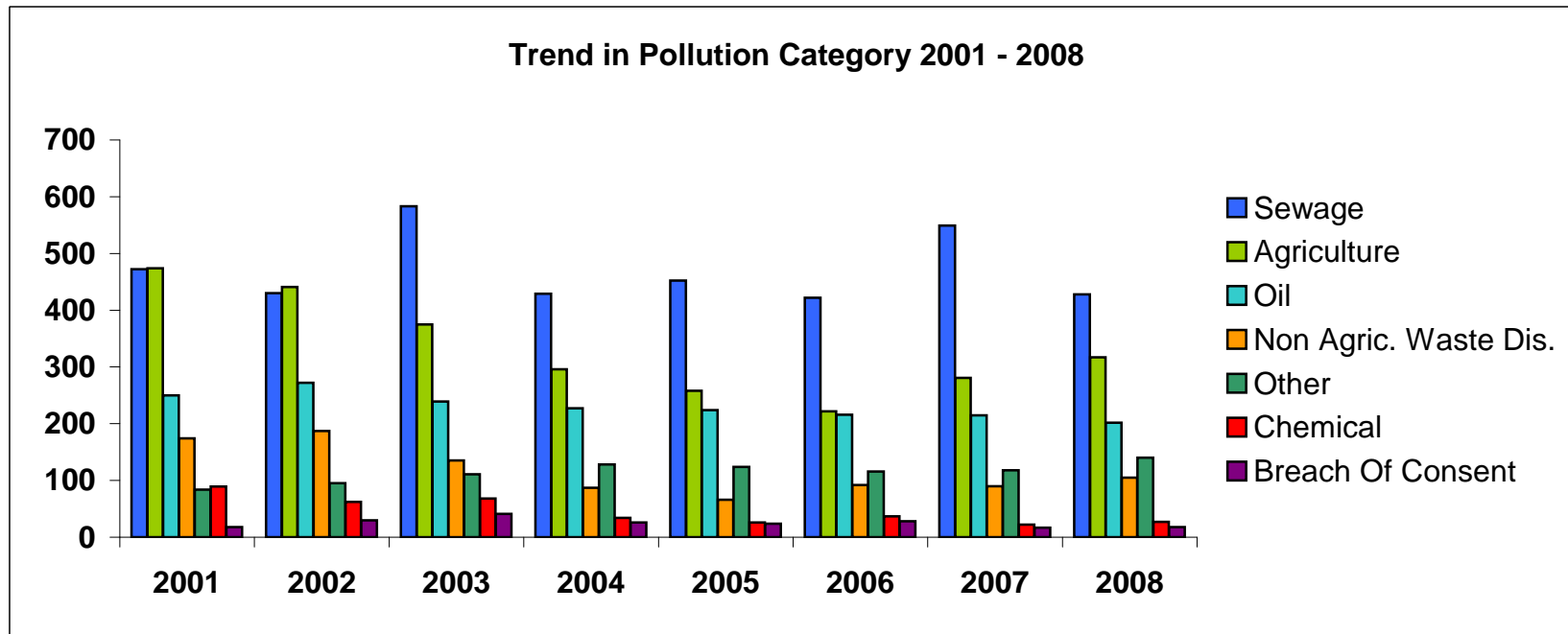


Table 9: Cause of Pollution Incidents in 2008

| CAUSE | Total No. of Incidents | As a % of the total |
|-----------------------|------------------------|---------------------|
| Equipment Failure | 247 | 20.0% |
| Unknown | 252 | 20.4% |
| Poor Working Practice | 191 | 15.4% |
| Accident/Emergency | 119 | 9.6% |
| Inadequate Equipment | 125 | 10.1% |
| Negligence | 122 | 9.9% |
| Weather | 68 | 5.5% |
| Deliberate Dumping | 43 | 3.5% |
| Other | 34 | 2.7% |
| Breach of Consent | 36 | 2.9% |
| | 1237 | 100% |

Figure 15: Cause of Pollution Incidents in 2008

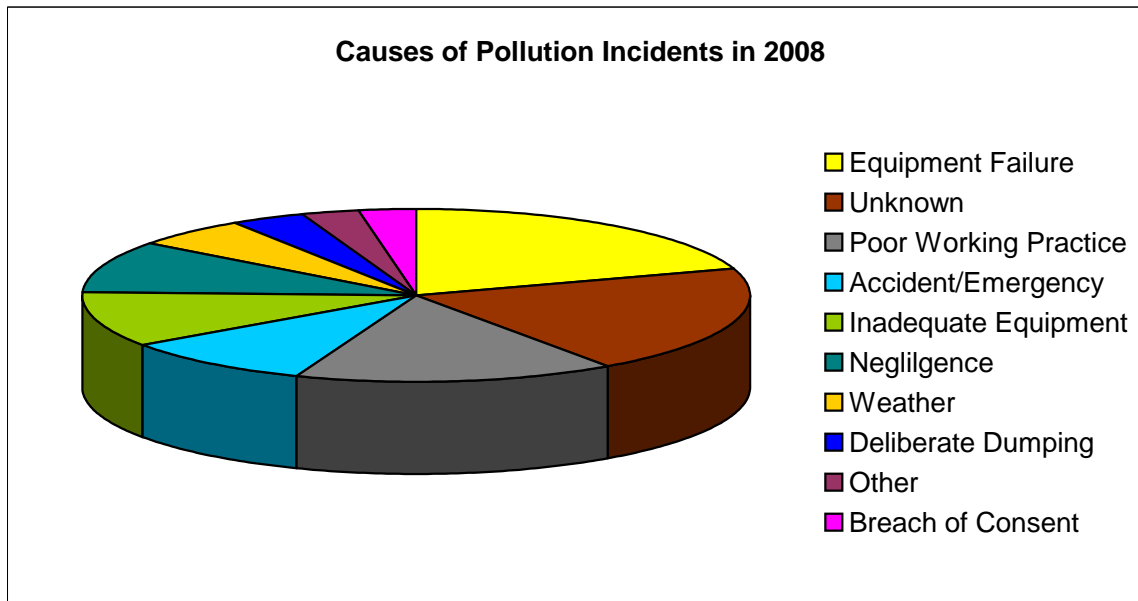
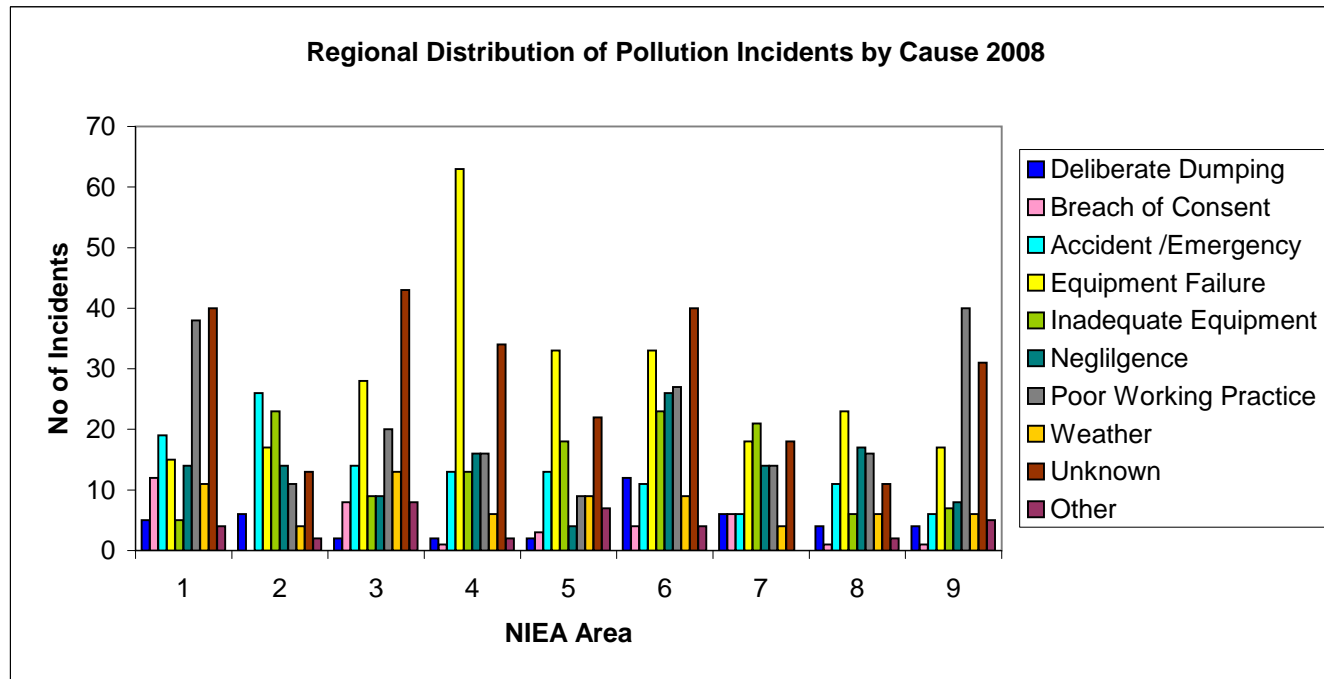


Table 10: Regional Distribution of Pollution Incidents by Cause in 2008

| Area | Deliberate Dumping | Breach of Consent | Accident /Emergency | Equipment Failure | Inadequate Equipment | Negligence | Poor Working Practice | Weather | Unknown | Other | Total |
|--------------|--------------------|-------------------|---------------------|-------------------|----------------------|------------|-----------------------|-----------|------------|-----------|-------------|
| 1 | 5 | 12 | 19 | 15 | 5 | 14 | 38 | 11 | 40 | 4 | 163 |
| 2 | 6 | 0 | 26 | 17 | 23 | 14 | 11 | 4 | 13 | 2 | 116 |
| 3 | 2 | 8 | 14 | 28 | 9 | 9 | 20 | 13 | 43 | 8 | 154 |
| 4 | 2 | 1 | 13 | 63 | 13 | 16 | 16 | 6 | 34 | 2 | 166 |
| 5 | 2 | 3 | 13 | 33 | 18 | 4 | 9 | 9 | 22 | 7 | 120 |
| 6 | 12 | 4 | 11 | 33 | 23 | 26 | 27 | 9 | 40 | 4 | 189 |
| 7 | 6 | 6 | 6 | 18 | 21 | 14 | 14 | 4 | 18 | 0 | 107 |
| 8 | 4 | 1 | 11 | 23 | 6 | 17 | 16 | 6 | 11 | 2 | 97 |
| 9 | 4 | 1 | 6 | 17 | 7 | 8 | 40 | 6 | 31 | 5 | 125 |
| Total | 43 | 36 | 119 | 247 | 125 | 122 | 191 | 68 | 252 | 34 | 1237 |

Figure 16: Regional Distribution of Pollution Incidents by Cause in 2008



Trend in Pollution Incident Cause 2001 to 2008

| Cause | 2001 | 2002 | 2003 | 2004 | 2005 | 2006 | 2007 | 2008 |
|-----------------------|-------------|-------------|-------------|-------------|-------------|-------------|-------------|-------------|
| Equipment Failure | 296 | 225 | 237 | 253 | 233 | 211 | 274 | 247 |
| Poor Working Practice | 297 | 330 | 340 | 221 | 191 | 196 | 200 | 191 |
| Unknown | 258 | 256 | 262 | 171 | 195 | 214 | 222 | 252 |
| Accident / Emergency | 127 | 135 | 154 | 147 | 168 | 122 | 158 | 119 |
| Inadequate Equipment | 128 | 114 | 147 | 127 | 132 | 102 | 138 | 125 |
| Negligence | 154 | 156 | 138 | 105 | 71 | 73 | 91 | 122 |
| Weather | 85 | 102 | 68 | 74 | 60 | 58 | 54 | 68 |
| Deliberate dumping | 143 | 123 | 120 | 67 | 56 | 63 | 62 | 43 |
| Breach of Consent | 21 | 36 | 40 | 32 | 27 | 39 | 46 | 36 |
| Other | 52 | 40 | 46 | 30 | 41 | 55 | 47 | 34 |
| Total | 1561 | 1517 | 1552 | 1227 | 1174 | 1133 | 1292 | 1237 |

Figure 17: Trend in Pollution Incident Cause 2001 to 2008

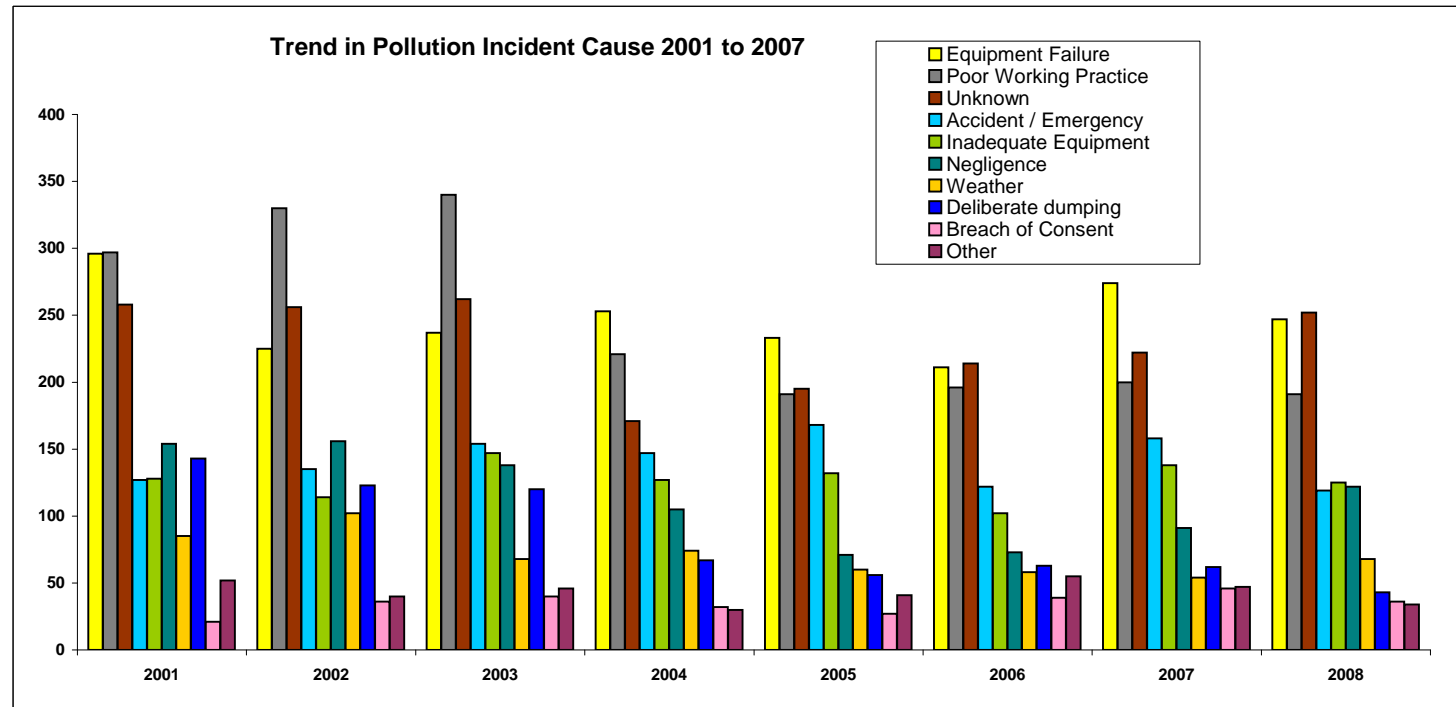


Table 11: Severity of Pollution Incidents 2008

| | No. of Incidents | As a % of the total | (See 2006 Report for Severity Classification Definitions) |
|--------------|------------------|---------------------|---|
| High | 20 | 1.6% | |
| Medium | 229 | 18.5% | |
| Low | 988 | 79.9% | |
| Total | 1237 | 100% | |

Figure 18: Severity of Pollution Incidents 2008

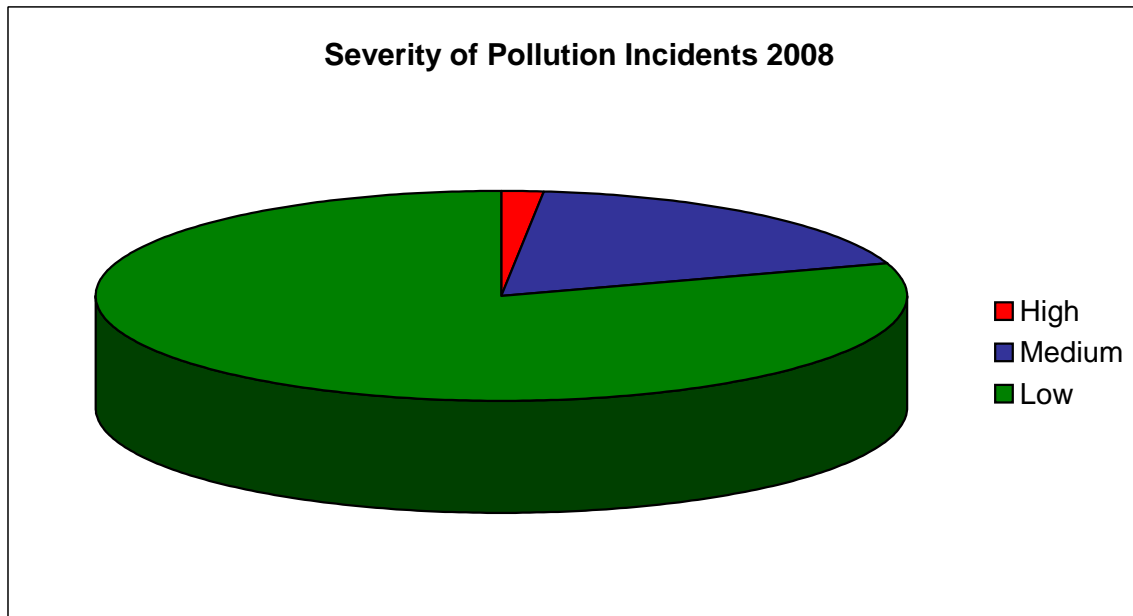


Table 12: Regional Distribution of Pollution Incidents by Severity in 2008

| Area | Severity | | | Total |
|--------------|------------|------------|-----------|-------------|
| | Low | Medium | High | |
| 1 | 147 | 15 | 1 | 163 |
| 2 | 96 | 18 | 2 | 116 |
| 3 | 121 | 31 | 2 | 154 |
| 4 | 138 | 26 | 2 | 166 |
| 5 | 89 | 31 | 0 | 120 |
| 6 | 143 | 43 | 3 | 189 |
| 7 | 75 | 28 | 4 | 107 |
| 8 | 87 | 10 | 0 | 97 |
| 9 | 92 | 27 | 6 | 125 |
| Total | 988 | 229 | 20 | 1237 |

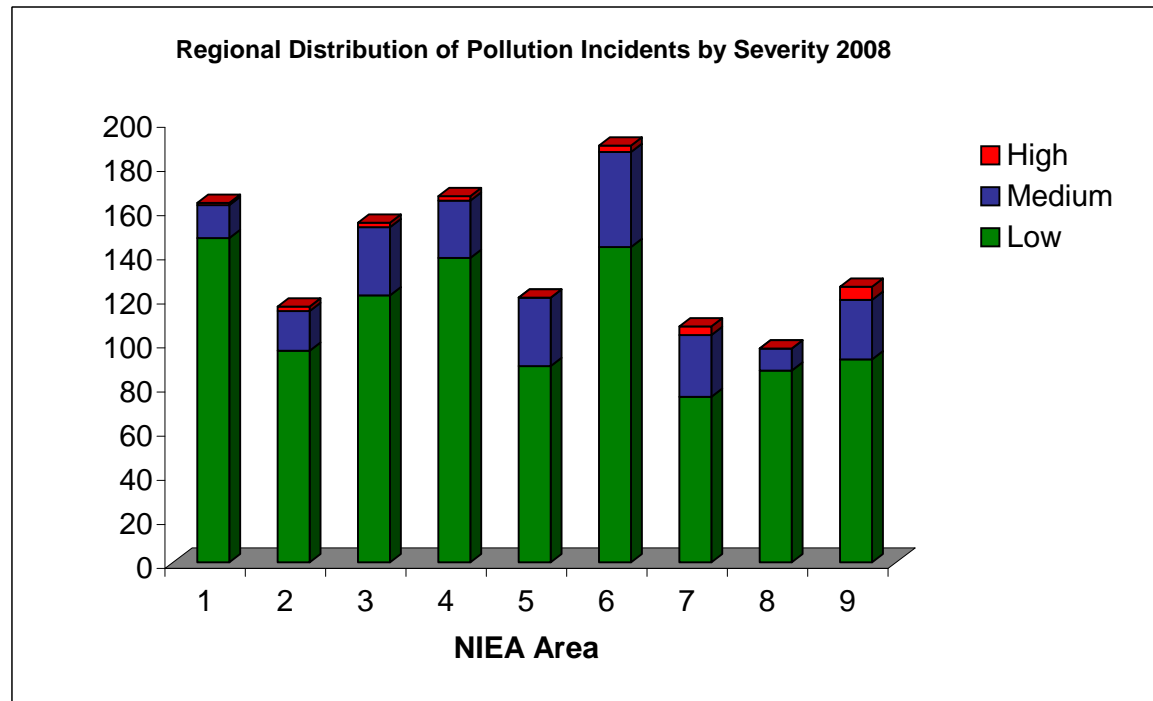
Figure 19: Regional Distribution of Pollution Incidents by Severity in 2008

Table 13: Severity of Pollution Incidents by Source 2008

| SOURCE | Low | Medium | High | Total |
|----------------------------|------------|------------|-----------|-------------|
| NORTHERN IRELAND WATER LTD | 221 | 56 | 0 | 277 |
| FARM | 233 | 82 | 11 | 326 |
| INDUSTRY | 205 | 65 | 4 | 274 |
| DOMESTIC | 171 | 2 | 0 | 173 |
| OTHER | 141 | 18 | 5 | 164 |
| TRANSPORT | 17 | 6 | 0 | 23 |
| Total | 988 | 229 | 20 | 1237 |

Figure 20: Severity of Pollution Incidents by Source 2008

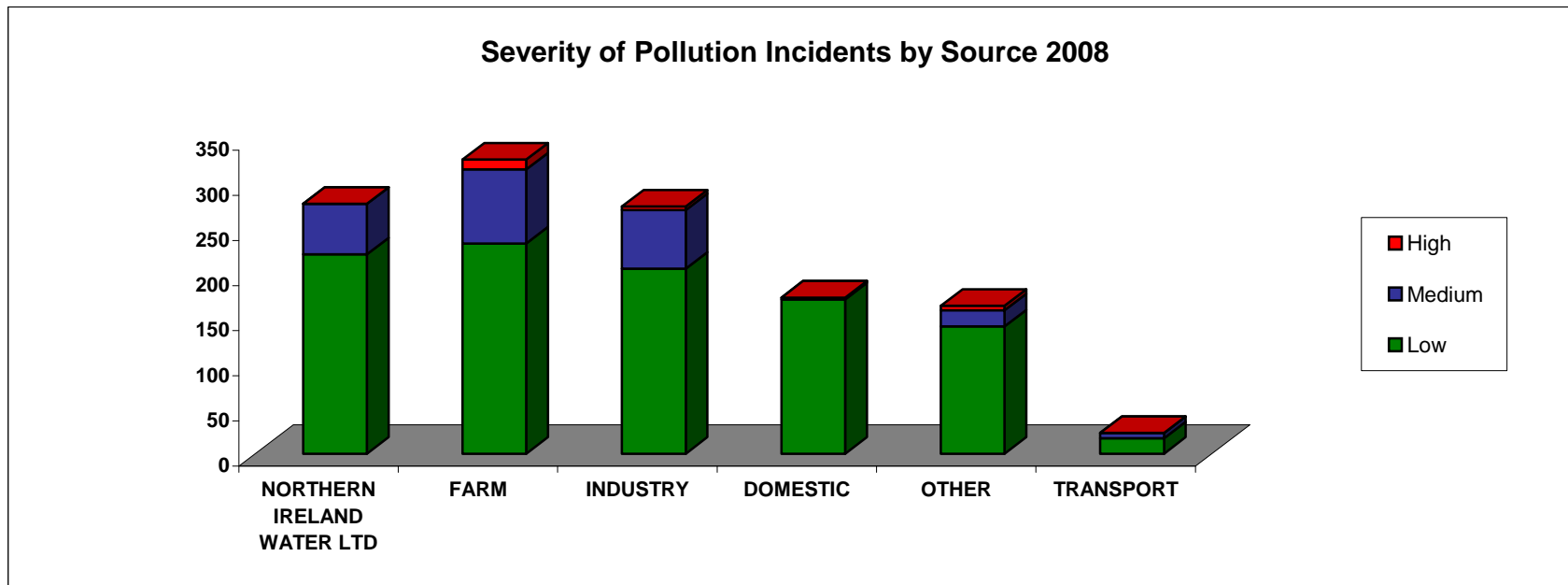


Table 14: Severity of Pollution Incidents by Category 2008

| Category Name | High | Medium | Low | Total No. of Incidents |
|-----------------------|-----------|------------|------------|------------------------|
| SEWAGE | 2 | 65 | 361 | 428 |
| AGRICULTURE | 11 | 81 | 225 | 317 |
| OIL | 0 | 30 | 172 | 202 |
| OTHER | 4 | 19 | 117 | 140 |
| NON AGRIC. WASTE DIS. | 0 | 23 | 82 | 105 |
| CHEMICAL | 3 | 7 | 17 | 27 |
| BREACH OF CONSENT | 0 | 4 | 14 | 18 |
| Total | 20 | 229 | 988 | 1237 |

Figure 21: Severity of Pollution Incidents by Category 2008

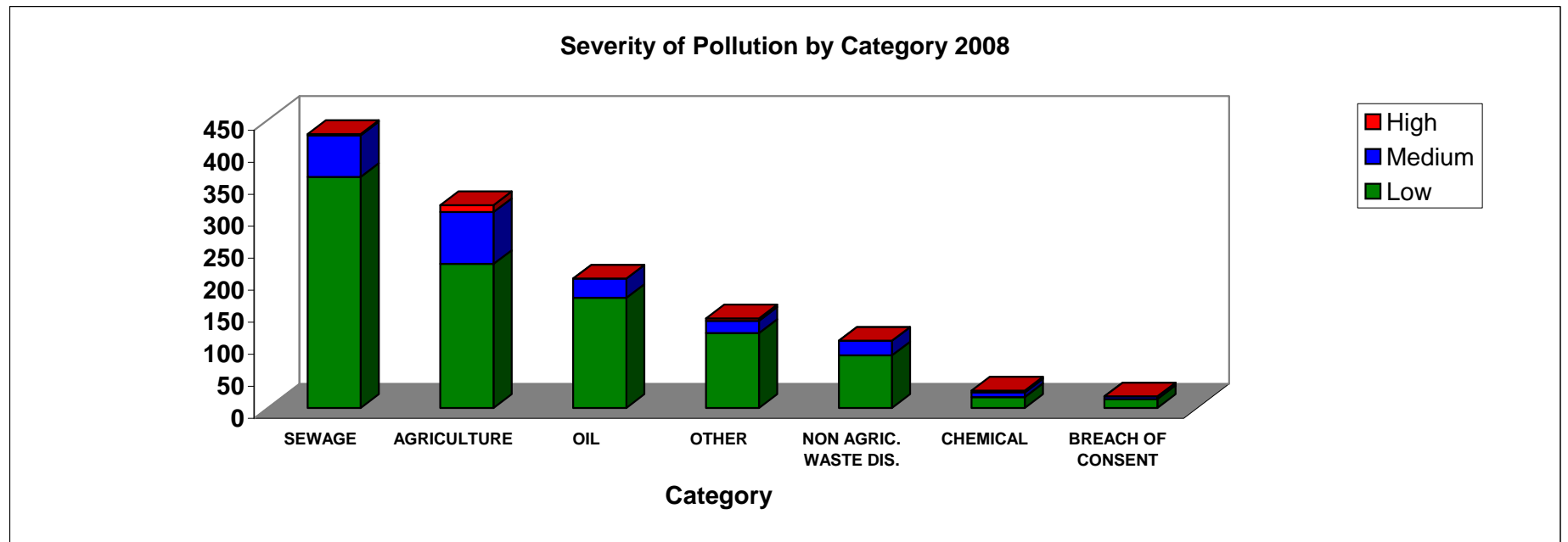


Table 15: Severity of Pollution Incidents by Cause 2008

| Cause | Low | Medium | High | Total |
|-----------------------|------------|------------|-----------|-------------|
| Equipment Failure | 202 | 45 | 0 | 247 |
| Poor Working Practice | 151 | 37 | 3 | 191 |
| Unknown | 214 | 30 | 8 | 252 |
| Accident / Emergency | 103 | 14 | 2 | 119 |
| Inadequate Equipment | 92 | 31 | 2 | 125 |
| Negligence | 76 | 44 | 2 | 122 |
| Weather | 66 | 2 | 0 | 68 |
| Deliberate dumping | 27 | 13 | 3 | 43 |
| Breach of Consent | 27 | 9 | 0 | 36 |
| Other | 30 | 4 | 0 | 34 |
| Total | 988 | 229 | 20 | 1237 |

Figure 22: Severity of Pollution Incidents by Cause 2008

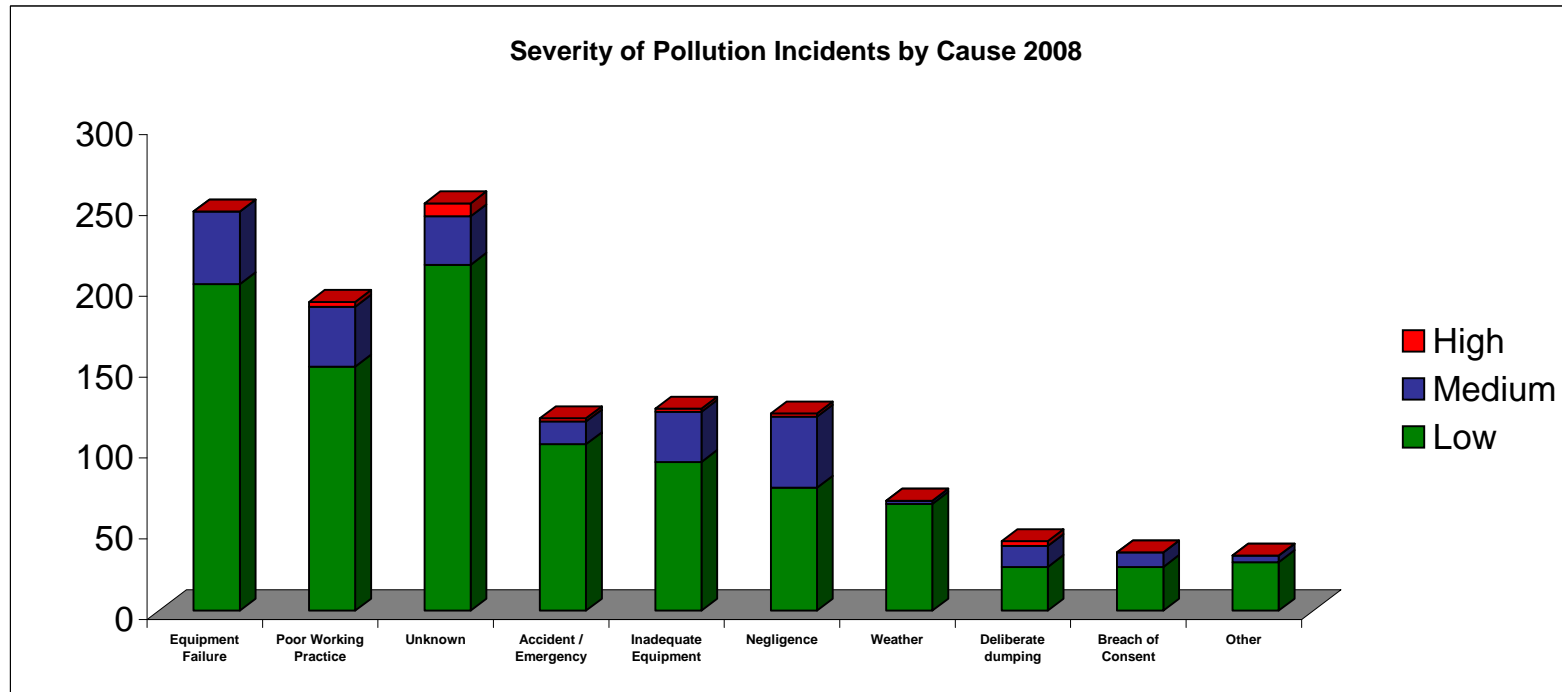


Table 16: Response Rate to High and Medium Severity Pollution Incidents 2008

| Time period | No. High & Medium severity incidents received | No. High & Medium severity incidents responded to within Target | Response rate (%) |
|--------------------------|---|---|-------------------|
| Q1, (1/1/08 - 31/3/08) | 71 | 61 | 86% |
| Q2, (1/4/08 - 30/6/08) | 72 | 66 | 92% |
| Q3, (1/7/08 - 30/9/08) | 52 | 47 | 90% |
| Q4, (1/10/08 - 31/12/08) | 54 | 54 | 100% |
| Total for 2008 | 249 | 228 | |
| | | Overall response rate for 2008 | 91.6% |

Figure 23: Response Rate to High and Medium Severity Pollution Incidents 2008

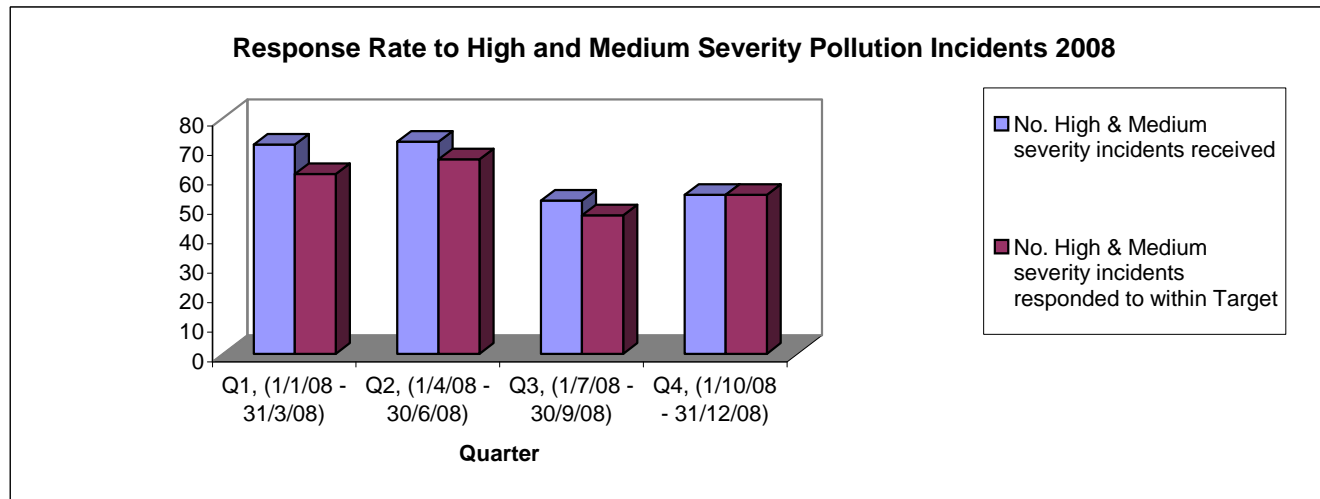


Table 17: Response Rate to High and Medium Severity Pollution Incidents 2001 to 2008

| | 2001 | 2002 | 2003 | 2004 | 2005 | 2006 | 2007 | 2008 |
|--|--------------|--------------|--------------|--------------|--------------|--------------|--------------|--------------|
| No. High & Medium severity incidents received | 321 | 264 | 339 | 310 | 220 | 191 | 226 | 249 |
| No. High & Medium severity incidents responded to within target | 291 | 218 | 317 | 297 | 209 | 188 | 216 | 228 |
| Response rate (%) | 90.7% | 82.6% | 93.5% | 95.8% | 95.0% | 98.4% | 95.5% | 91.6% |

*The Incident Response Targets Changed in 2005. (The Targets are detailed in Section 2.10 of the 2006 Report).

Figure 24: Response Rate to High and Medium Severity Pollution Incidents 2001 to 2008

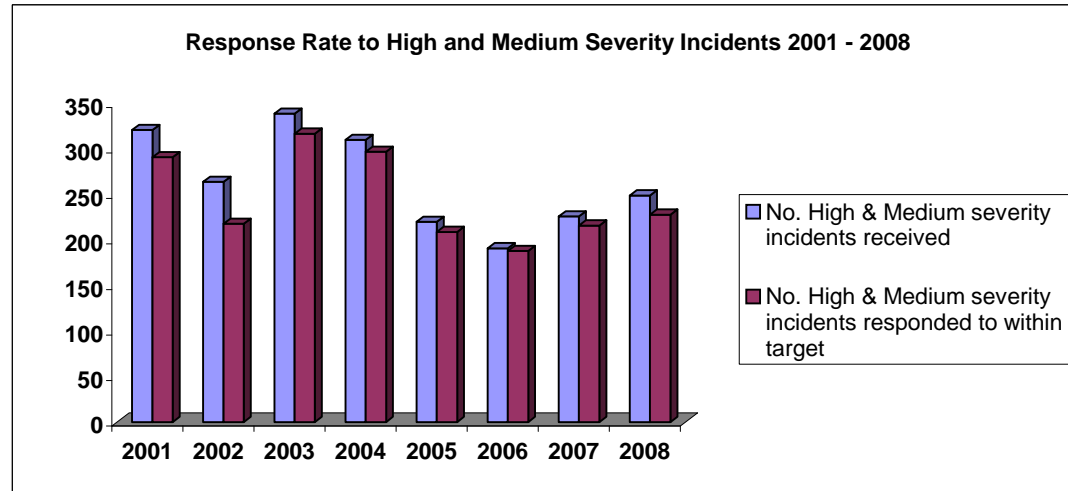


Table 18: Sources of Pollution Causing FishKills in 2008

| Source | As a % of the total | 2008 |
|----------------------------|---------------------|-----------|
| Farm | 40.9% | 9 |
| Northern Ireland Water Ltd | 9.1% | 2 |
| Other | 22.7% | 5 |
| Industry | 27.3% | 6 |
| Transport | 0.0% | 0 |
| Domestic | 0.0% | 0 |
| Total | 100% | 22 |

Figure 25: Sources of Pollution Causing FishKills in 2008

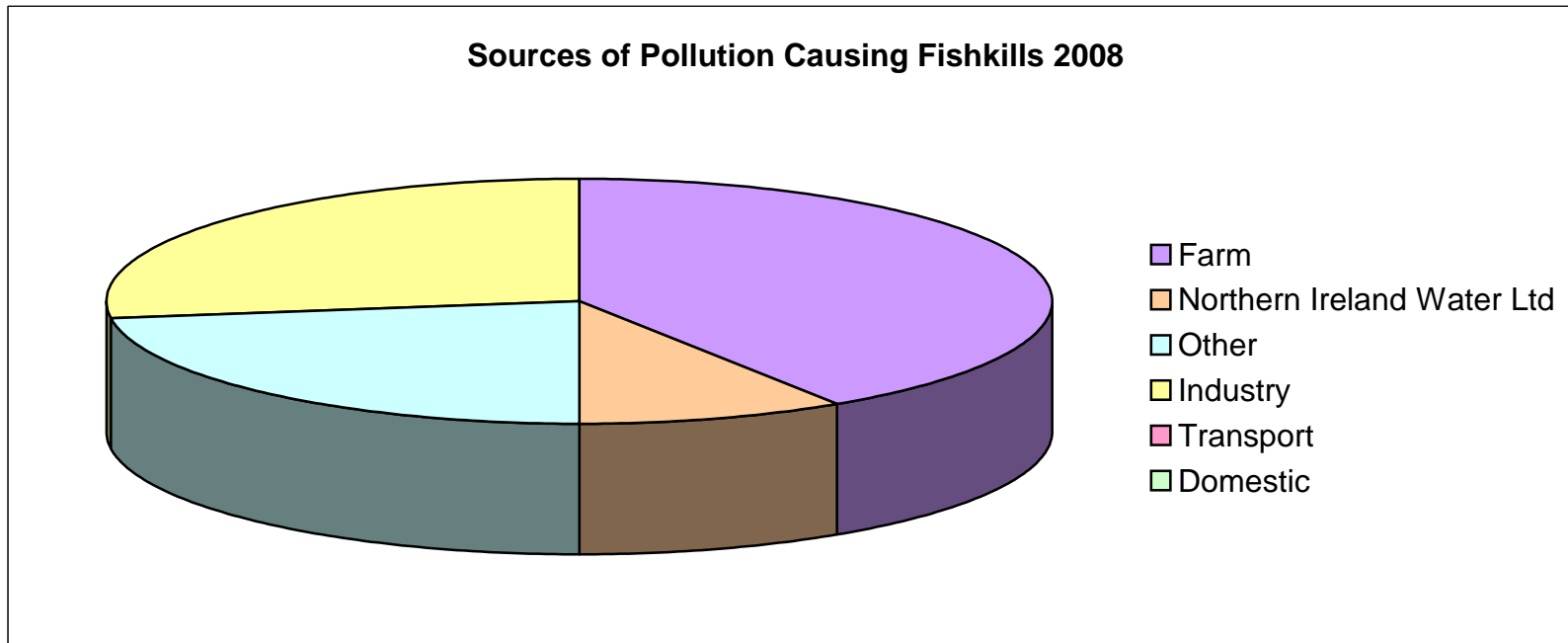
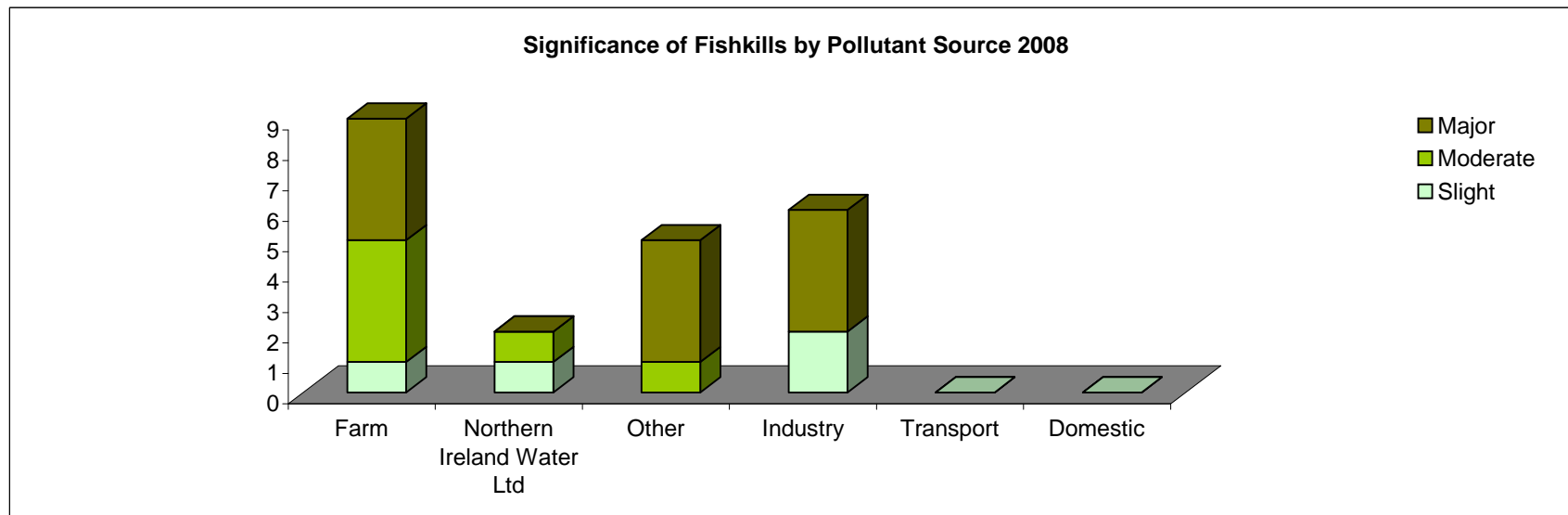


Table 19: Significance of FishKills by Pollutant Source 2008

| Source | Slight | Moderate | Major | Total | (See 2006 Report for Classification Definitions) |
|----------------------------|----------|----------|-----------|-----------|--|
| Farm | 1 | 4 | 4 | 9 | |
| Northern Ireland Water Ltd | 1 | 1 | 0 | 2 | |
| Other | 0 | 1 | 4 | 5 | |
| Industry | 2 | 0 | 4 | 6 | |
| Transport | 0 | 0 | 0 | 0 | |
| Domestic | 0 | 0 | 0 | 0 | |
| Total | 4 | 6 | 12 | 22 | |

Figure 26: Significance of FishKills by Pollutant Source 2008



Trend in Pollution Source Causing FishKills 2001 to 2008

| | 2001 | 2002 | 2003 | 2004 | 2005 | 2006 | 2007 | 2008 | Total |
|--------------------|-----------|-----------|-----------|-----------|-----------|-----------|-----------|-----------|------------|
| Farming | 22 | 6 | 8 | 9 | 5 | 3 | 7 | 9 | 69 |
| Industry | 11 | 4 | 6 | 1 | 1 | 2 | 2 | 6 | 33 |
| Water Service/NIWL | 8 | 1 | 6 | 4 | 2 | 7 | 2 | 2 | 32 |
| Other | 4 | 4 | 3 | 3 | 2 | 6 | 3 | 5 | 30 |
| Transport | 0 | 0 | 0 | 1 | 0 | 0 | 1 | 0 | 2 |
| Domestic | 0 | 0 | 1 | 0 | 0 | 1 | 0 | 0 | 2 |
| Total | 45 | 15 | 24 | 18 | 10 | 19 | 15 | 22 | 168 |

Figure 27: Trend in Pollution Source Causing FishKills 2001 to 2008

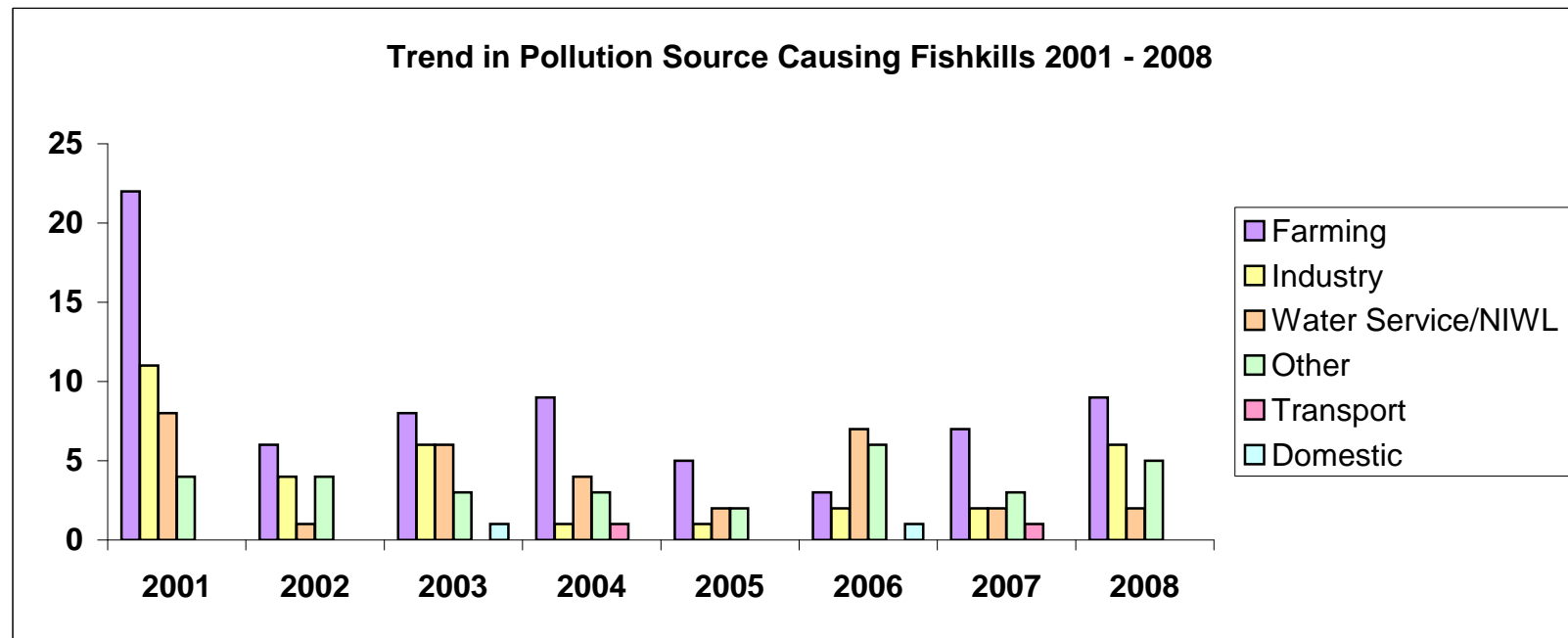


Table 20: Summary of Cases Referred to PPS for Incidents that Occurred in 2007

| Summary of Cases Referred to PPS with a Recommendation for Prosecution, for Incidents that occurred during 2007 (As at 23 October 2009) | | |
|--|--|-----------------------|
| Category | Cases referred to PPS for prosecution | % of the total |
| Agriculture | 25 | 52.1% |
| Non Agric. Waste Dis. | 5 | 10.4% |
| Breach Of Consent | 1 | 2.1% |
| Sewage | 10 | 20.8% |
| Chemical | 0 | 0.0% |
| Oil | 3 | 6.3% |
| Other | 4 | 8.3% |
| Total | 48 | 100% |

Table 21: Costs and Fines Imposed under the Water (NI) Order 1999, for Incidents that occurred in 2007 (As at 23 October 2009)

| CATEGORY | Analysis Costs | Court Costs | Fines | Total |
|---|-----------------------|--------------------|-------------------|-------------------|
| Agriculture | £2,987.23 | £613.00 | £20,900.00 | £24,500.23 |
| Breach of Consent | £115.99 | £25.00 | £1,500.00 | £1,640.99 |
| Chemical | £0.00 | £0.00 | £0.00 | £0.00 |
| Non Agricultural Waste Discharge | £669.31 | £84.00 | £3,300.00 | £4,053.31 |
| Oil | £694.20 | £345.00 | £7,500.00 | £8,539.20 |
| Other | £581.15 | £110.00 | £1,500.00 | £2,191.15 |
| Sewage | £955.85 | £297.00 | £22,000.00 | £23,252.85 |
| TOTAL | £6,003.73 | £1,474.00 | £56,700.00 | £64,177.73 |

Table 22: Water Pollution Prosecution Cases and Warning Letters 2000 to 2007

| Year | Water Order Prosecution Cases | Fisheries Legislation Prosecution Cases | Total Prosecution Cases | Warning Letters |
|-------------|--------------------------------------|--|--------------------------------|------------------------|
| 2000 | 76 | 7 | 83 | 246 |
| 2001 | 104 | 5 | 109 | 230 |
| 2002 | 99 | 2 | 101 | 202 |
| 2003 | 122 | 1 | 123 | 176 |
| 2004 | 78 | 1 | 79 | 195 |
| 2005 | 48 | 0 | 48 | 185 |
| 2006 | 47 | 0 | 47 | 156 |
| 2007 | 48 | 0 | 48 | 146 |

Water Pollution Prosecution Cases and Warning Letters 2000 to 2007

| | Warning Letters | Water Order Prosecution Cases | Fisheries Legislation Prosecution Cases | Total Prosecution Cases |
|------|-----------------|-------------------------------|---|-------------------------|
| 2000 | 246 | 76 | 7 | 83 |
| 2001 | 230 | 104 | 5 | 109 |
| 2002 | 202 | 99 | 2 | 101 |
| 2003 | 176 | 122 | 1 | 123 |
| 2004 | 195 | 78 | 1 | 79 |
| 2005 | 185 | 48 | 0 | 48 |
| 2006 | 156 | 47 | 0 | 47 |
| 2007 | 146 | 48 | 0 | 48 |

Figure 28: Water Pollution Prosecution Cases and Warning Letters 2000 to 2007

