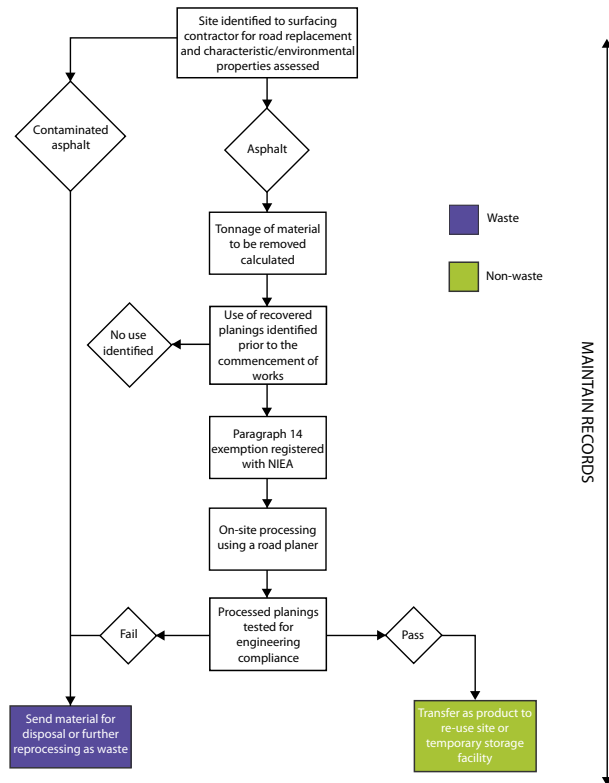


PROCESSING ASPHALT ROAD

Contractors should follow this flow chart when processing failed asphalt road surfaces.



ROAD PLANINGS OVERVIEW

Detailed guidance on the production of fully recovered asphalt road planings at: www.ni-environment.gov.uk/Final_amended_wml_Regs.pdf.

Waste Management Exemptions: www.ni-environment.gov.uk/waste_authorisation/exemption.htm. Paragraph 14 (1)

NIEA website: www.ni-environment.gov.uk/
Quarry Products Association: www.qpa.org

FURTHER INFORMATION

Contact 'Land and Resource Management' at the address below.

Direct Line
Tel (028) 9056 9436, Fax (028) 9056 9376

Our aim is to protect, conserve and promote the natural environment and built heritage for the benefit of present and future generations.

Northern Ireland Environment Agency
Klondyke Building
Cromac Avenue
Gasworks Business Park
Belfast BT7 2JA
T. 0845 302 0008

www.ni-environment.gov.uk

NIEA facts: Fully recovered asphalt road planings



INTRODUCTION

This is an overview for farmers who want to reuse asphalt road planings. It has been produced by Northern Ireland Environment Agency (NIEA).

A guidance document has also been published by NIEA titled Guidance on the Production of Fully recovered Asphalt Road Planings. It explains how to ensure the full recovery of aggregate from source segregated asphalt road planings so that it is no longer classed as waste.

By following this guidance, contractors can produce a material that is suitable for recycling and re-use. In addition, it no longer needs to be controlled under the Waste Management Licencing Regulations (NI) 2003 and Amendments.

NIEA is working to reduce the regulatory burden on businesses and to achieve the highest standards based on environmental risks.

ROAD PLANINGS OVERVIEW

When a road reaches the end of its life, it must be replaced. There are a number of reasons for road failure. These include failures of the foundation or structure, drainage, skid resistance, binder aggregate adhesion and/or surface profile.

If processed according to controlled specifications using a milling road planer, the end material is a highly valuable resource. It can be used in a number of different civil engineering applications, including capping, sub-base, basic running surfaces and as a feedstock in the manufacture of new road surface materials. If the planings are processed using the methodology set out in the guidance document and they have a clear and identifiable use, they can be classed as a product. This means their production and subsequent use does not need to be registered with NIEA therefore saving cost.

CHECKLIST

Before accepting processed road planings as a product, you should ensure the material:

1. Is made up of source-segregated asphalt road planings only.
2. Has been processed using a milling road planer.
3. Was produced by the contractor under an exemption registered with NIEA.
4. Complies with the specifications set out in the full guidance document.
5. Has a clear and appropriate use.

The producer of the processed asphalt should be able to answer points 1-4. If the answer to all of the above points is 'yes', the material is no longer classed as waste and its subsequent use is not subject to waste regulatory controls.

This approach relies on farmers being clear that the above checklist has been followed prior to using the asphalt road planings on their farm. The green box in the flow chart is when road planings can be considered a product suitable for reuse.

