



---

---

---

---

---


---

---

---

### Significant Water Management Issues (SWMI)

- Feedback from SWMI Exercise
- Future plans



---

---

---

---

---


---

---

---

### SWMI Report - What is it?

- An interim overview of the significant water management issues identified in the river basin
- NOT a report to go to Europe
- Milestone on the road to river basin management planning
- Produced by December 2007 - latest
- At least 6 months to comment to allow active involvement and consultation



---

---

---

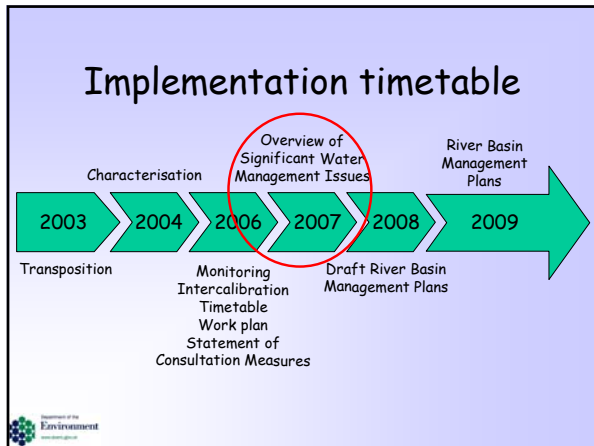
---

---

---

---

---




---

---

---

---

---

---

---

---

## SWMI Exercise - Feedback

- Circulated to Active & Corresponding (70+) on 1<sup>st</sup> December
- Received 8 responses:
  - 5 Active
  - 3 Corresponding
- Circulated to Working Group on 11<sup>th</sup> January, and discussion at this morning's meeting.
- One response to date

Department of the Environment  
 www.doe.gov.ie

---

---

---

---

---

---

---

---

## About the responses

- 'Open' questions - wide range of responses
- Responses reflect stakeholder 'slant'
- Range from very detailed to a few words
- Some are technical, some emotive

Department of the Environment  
 www.doe.gov.ie

---

---

---

---

---

---

---

---

## Grouping the issues

- **Pollution**
  - Point source
  - Diffuse source
- **Poor use of water**
  - Inefficient use
  - Leakage
  - Over abstraction
  - Contamination of clean water
- **Drainage**
  - Water levels
  - Habitats
- **Enforcement**
  - Poor planning controls
  - Discharge consents
  - Water Service
- **Communication**
  - Lack of guidance (or lack of awareness of existing guidance)
  - Poor liaison between interested parties
  - Joined-up Government?



---

---

---

---

---

---

---

---

## Solutions?

- **Financial**
  - Polluter pays - applied equally
  - Incentives
  - Highlight benefits
- **Enforcement**
  - Better planning control, building regulation
  - Additional legislation e.g. abstraction, diffuse
- **Education**
  - 'Wise-use' measures
  - Local-level involvement
- **Technology**
  - Infrastructure
  - Use of rain & 'grey' water
- **Government**
  - Pragmatism in working together
  - Resources
  - Political will



---

---

---

---

---

---

---

---

## More input welcome!

- Encourage all Forum & Working Group members to submit response (by 31 March)
- Will draft a summary of responses
- May/June Forum meeting
  - Further discussion of specific issues
  - Comparison with technical work



---

---

---

---

---

---

---

---