



Timetable, Work Programme & Statement of Consultation Measures

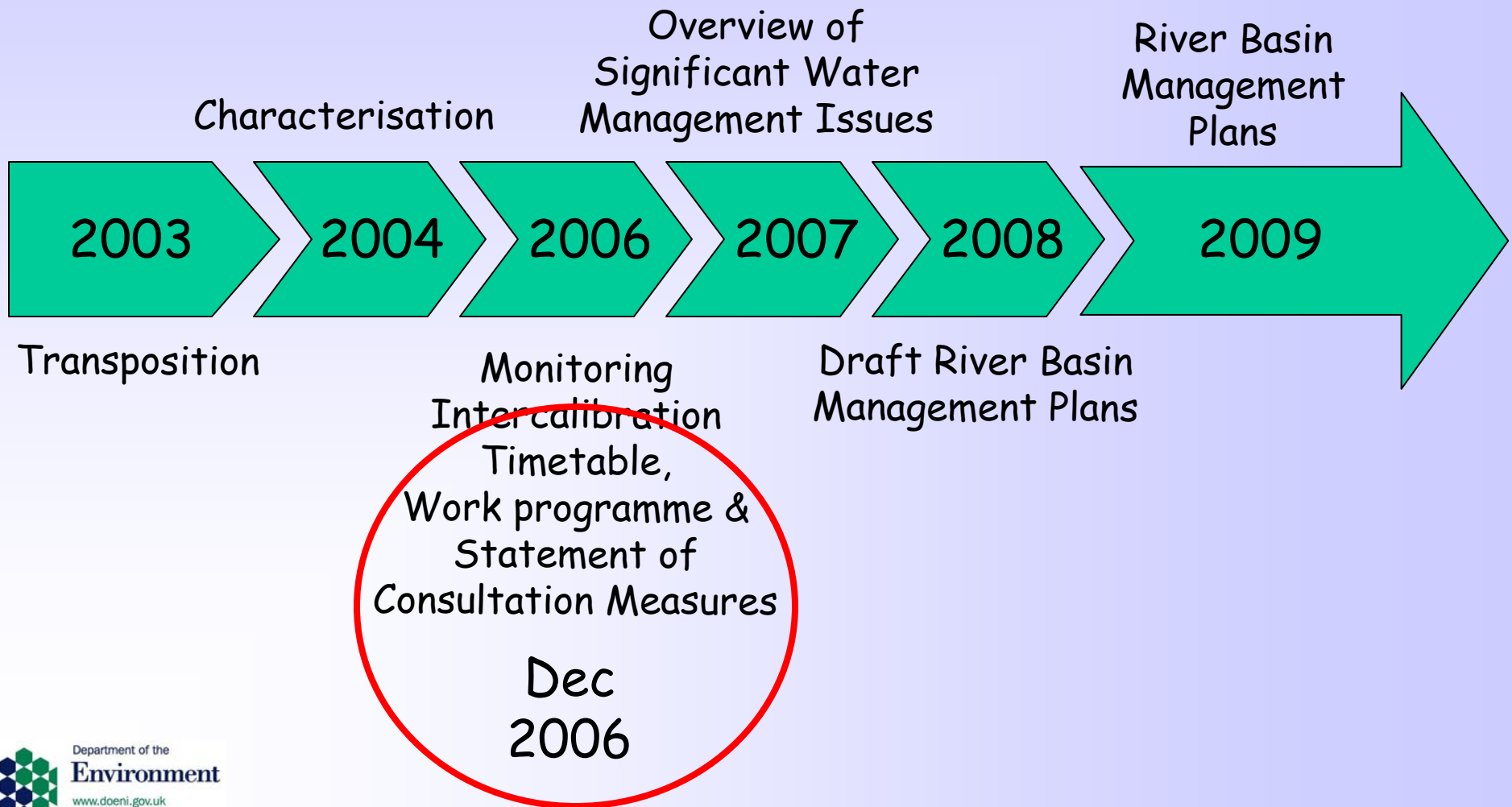
Claire Vincent

1 February 2006

Article 14 - Public Information and Consultation

- MSs shall encourage the active involvement of all interested parties in the implementation of this Directive
- MSs shall ensure that for each RBMP they publish and make available for comment
 - **Timetable & work programme** for prodⁿ of RBMP inc. **statement of consultation measures**
 - **Interim overview** of significant water management issues
 - Draft copies of RBMP

Implementation timetable



Administrative Arrangements for the Delivery of Water Framework Directive in Northern Ireland under WFD Regulations 2003 (SR No. 544)

Document Status

Draft Discussion Paper.

This paper summarises some of the legal duties arising from the WFD Regulations and outlines DoE suggestions for administrative arrangements to ensure effective implementation of the WFD. This paper should be regarded as a basis for ongoing discussion to develop these arrangements.

Paper requested at 2nd meeting of Inter-departmental Implementation Board, 27th April 2005.

Version 1

11. November 2005

Summary

The four main departments (DoE, DCAL, DARD and DRD, and their agencies), with functions relating to management of the water environment, share a **statutory obligation** under the WFD Regulations to implement the Water Framework Directive.

DoE, in its co-ordination role, has put forward (and partially implemented) the following proposals for the administrative arrangements of this **shared implementation**:

1. Co-ordinating Structures:
 - Inter-departmental Implementation Board
 - Inter-departmental Implementation Working Group
 - River Basin District level co-ordination
2. Co-ordination of activities and policies:
 - WFD Implementation Strategy
 - WFD Implementation Workplan
 - WFD 'proofed' Business Planning
 - Inter-departmental / Inter-agency Agreements
 - WFD Guidance

It is envisaged that the Working Group will take forward the preparation of the Implementation Workplan, which will pull together the key WFD targets from Departmental/Agency business plans. Progress reports from this work, together with any bi-lateral agreements will be incorporated into the Implementation Strategy, making it a dynamic document under the supervision of the Board.

(NB. These structures do not take account of the Stakeholder Forum, or the need for local level public engagement as this paper is concerned with the arrangements within government).

Discussions on these arrangements are very welcome, as DoE wishes to stress the need for **partnership** in ensuring the effective implementation of river basin management within Northern Ireland.

Draft Strategy for the Implementation of Water Framework Directive in Northern Ireland



Status of this Paper

The purpose of this paper is to outline the main steps in the ongoing implementation of WFD enabling the further development of work plans. The paper attempts to demonstrate the linkages between work areas to ensure clarity of responsibilities. This paper is being circulated to the Implementation Working Group (January 2006) to assist in the further bilaterals with other Departments and agencies.

Departments and agencies are requested to consider the paper and to ensure that all the deliverables that fall to their department/agency are listed in the Implementation Strategy.

Departments and agencies are then requested to ensure that WFD deliverables appear in their own business planning process. Once this paper has been agreed by departments'/agencies', the strategy can be adopted and used to inform stakeholders of the detail of implementation. It will be used to develop the work plan and timetable for implementation required in the Directive by **December 2006**. The Implementation Strategy will also be used as a basis to draw up memoranda of understanding, guidance etc.

It is suggested that the strategy is updated on an annual basis to reflect new work programme targets of the Departments and Agencies involved in WFD implementation, reflecting that the strategy is a dynamic document.

Administrative Arrangements Paper

Exercise of relevant functions

Regulation 3(1)

3. (1) The Department, DARD, DCAL and DRD shall exercise their relevant functions in a manner which secures compliance with the requirements of the Directive.

Co-ordination

Regulation 3(2)(a)

(2) In exercising its relevant functions, the Department shall ensure that the requirements of the Directive for the achievement of its environmental objectives are co-ordinated and shall, in particular - ensure that the programme of measures is co-ordinated for the whole of the river basin district;

Administrative Arrangements Paper

Duty to have regard to River Basin Management Plans

Regulation 17

17. The Department and each public body shall, in exercising their functions so far as affecting the river basin district or the part of an international river basin district falling within Northern Ireland, have regard to -

(a) the river basin management plan for that district;

Questions for Departments and Agencies

- Annexes 1 - 4. What can you add to these?
- What are your 'relevant functions'?
- What changes need to be made to 'secure compliance' with the WFD?
- What steps are being taken within your Department to ensure that the Programme of Measures is established by 2009 and operational by 2012?

Draft Implementation Strategy

- Introduction
- New legislative requirements
- Planning
 - Organisation, cycle, characterisation, monitoring, classification, setting objectives and programme of measures
- Participation
- Regulation
- Economics

Status of this Paper

The purpose of this paper is to outline the main steps in the ongoing implementation of WFD enabling the further development of work plans. The paper attempts to demonstrate the linkages between work areas to ensure clarity of responsibilities. This paper is being circulated to the Implementation Working Group (January 2006) to assist in the further bilaterals with other Departments and agencies.

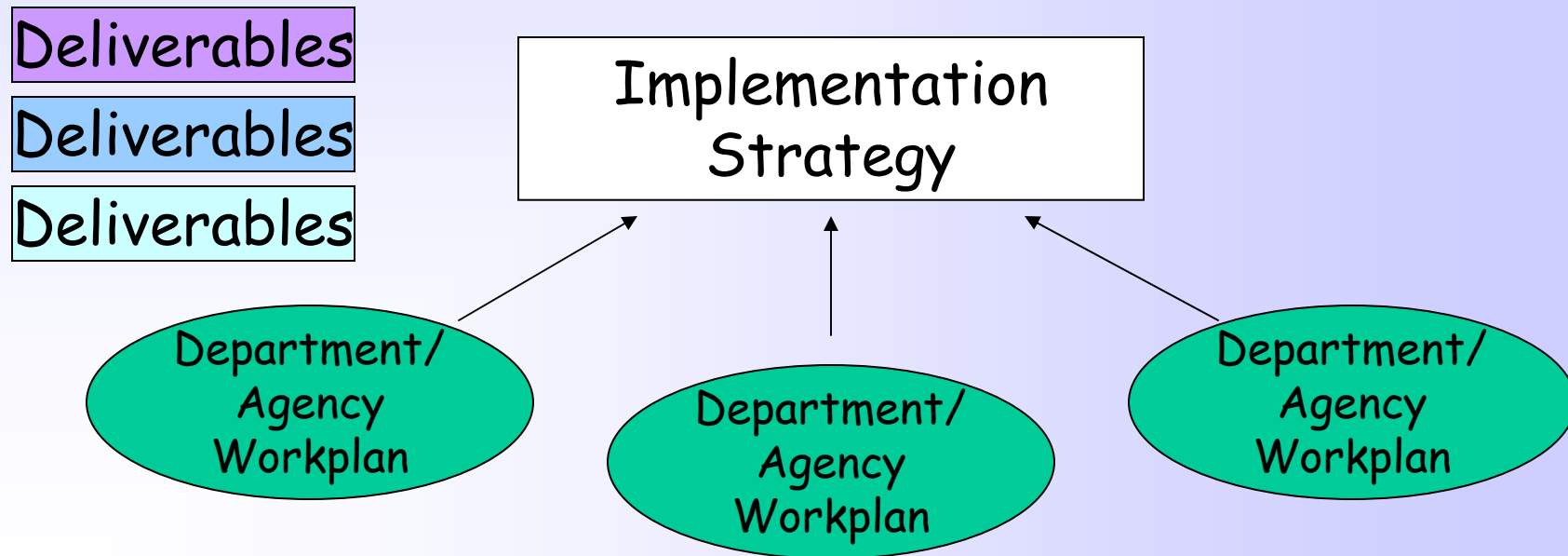
Departments and agencies are requested to consider the paper and to ensure that all the deliverables that fall to their department/agency are listed in the Implementation Strategy.

Departments and agencies are then requested to ensure that WFD deliverables appear in their own business planning process. Once this paper has been agreed by department/agencies, the strategy can be adopted and used to inform stakeholders of the detail of implementation. It will be used to develop the work plan and timetable for implementation required in the Directive by December 2006. The Implementation Strategy will also be used as a basis to draw up memoranda of understanding, guidance etc.

It is suggested that the strategy is updated on an annual basis to reflect new work programme targets of the Departments and Agencies involved in WFD implementation, reflecting that the strategy is a dynamic document.

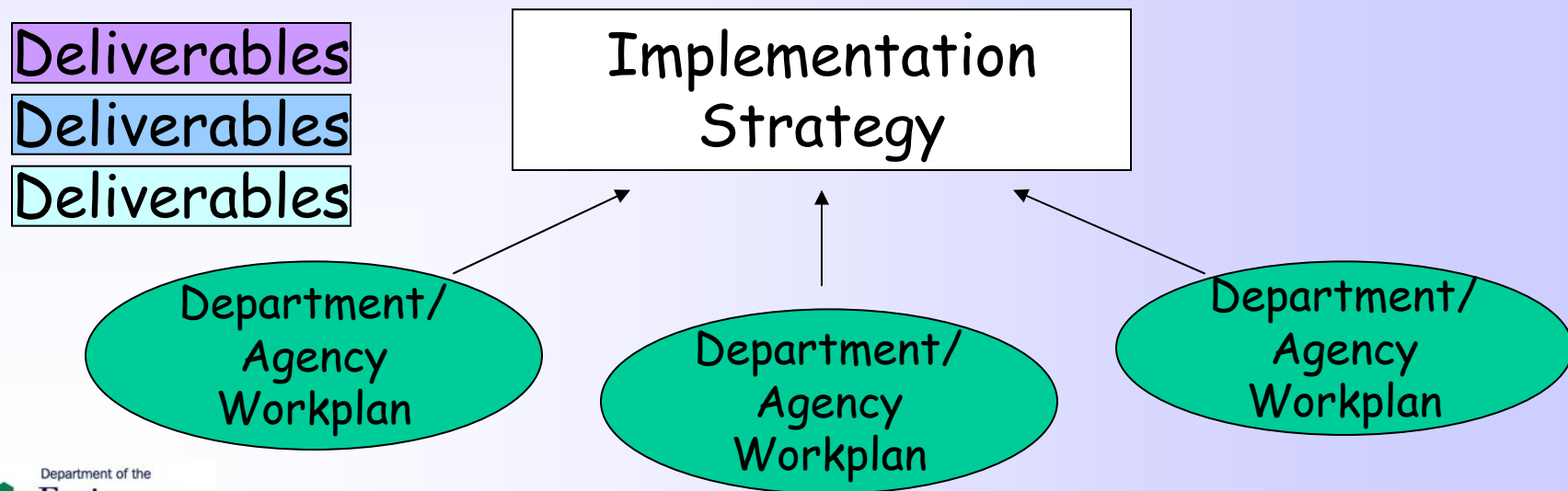
Draft Implementation Strategy

- Starts to identify deliverables
- Needs input from Departments / Agencies and you!



Draft Implementation Strategy

- How do we finalise?
- Further work with government departments and agencies up to Easter
- Circulate to main stakeholder group for next meeting (last week April).



Examples of questions for Departments & Agencies....

- What are you already doing which should be captured in the Programme of Measures?
- Are there changes that need to be made
 - planning policy guidelines?
 - agri-environment schemes?
 - Regional development strategy etc
- Provision of information - are you resourced to provide the information / input required?
- What more do you need from DOE?

Timetable, Work Programme & Statement of Consultation Measures (for production of RBMP)

- As competent authority, DOE (EHS) will co-ordinate
- Stakeholder conference June 2006
- Consultation in Autumn 2006
- Possibly co-ordinate with the launch of the Sustainable Development Strategy