

# Draft River Basin Plans

Upper Foyle  
Catchment Stakeholder Group

Alvin Wilson – NIEA



---

---

---

---

---

---

---

---

## Overview

- Brief overview of the river basin planning process
- Dealing with the consultation questions



---

---

---

---

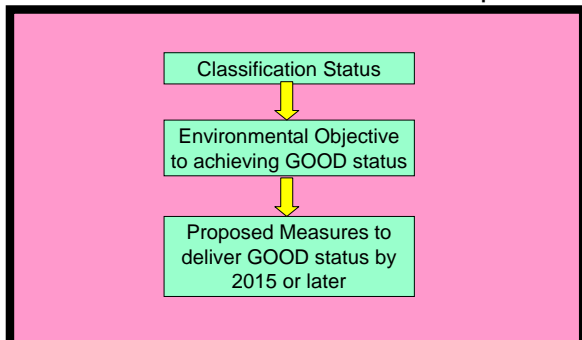
---

---

---

---

## Water Framework Directive Steps



---

---

---

---

---

---

---

---

### Northern Ireland River Basin Districts



NIEA Northern Ireland Environment Agency

---

---

---

---

---

---

---

---



NIEA Northern Ireland Environment Agency

---

---

---

---

---

---

---

---

**Quick start guide**

- **Identified on your map** - Click on the water quality icon to search information you have searched using the identify tool.
- **Water environment** - Information about water bodies that can be displayed on your map. Click on the water quality icon to search information and click on the water quality icon to search for specific locations.
- **Always available** - The icons used in relation to our water environment.
- **Print the current map** - We can copy the map to an A4 pdf file.

**Search for:**

Identified on your map

Water environment  
 Address Search  
 History  
 Print the Current Map

---

---

---

---

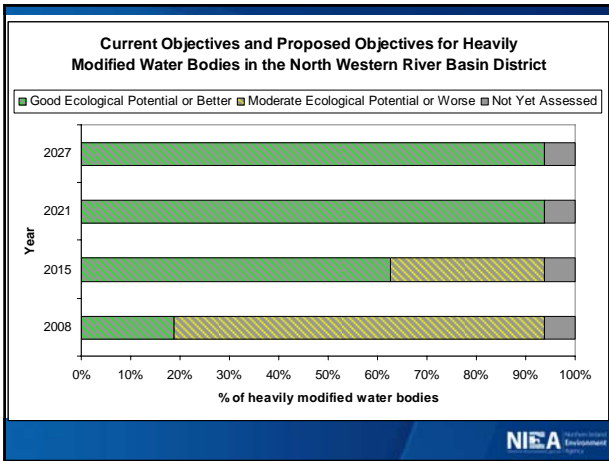
---

---

---

---






---

---

---

---

---

---

---

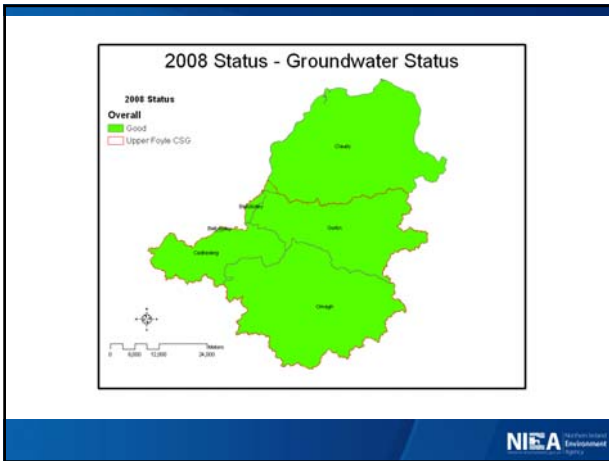
---

---

---

---

---




---

---

---

---

---

---

---

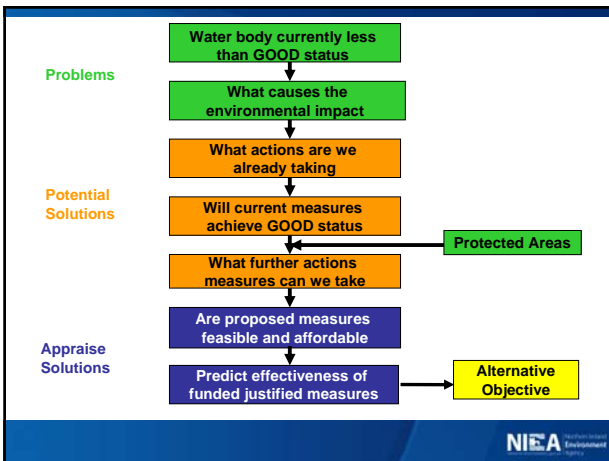
---

---

---

---

---




---

---

---

---

---

---

---

---

---

---

---

---

## Programme of Measures

Two scenarios for measures:

- actions funded / legislation in place and timetabled - Programme for Government, 2008-11
- actions not funded/new legislation - Programme for Government, 2011-14




---

---

---

---

---

---

---

---

## Supplementary Measures

- Low/zero phosphorus (P) detergents
- Improved education and awareness campaigns
- Targeted advisory visits and inspections
- Develop Catchment models
- Further investigate sources and options for further removal of P from point discharges and diffuse sources




---

---

---

---

---

---

---

---

### Water Information Days

open to the public and FREE of charge - an opportunity to:

- Speak with NIEA staff about draft River Basin Plan proposals to improve the water environment - let us know about any community run initiatives that you are involved in that may help;
- Search our new interactive web map to find out more about your local river, lake, coastal waters and groundwater;
- Identify events and see how they can be used as indicators of water pollution;
- Collect feedback on local water management, which could be utilised in the classroom for those teachers delivering Physical Practical at GCSE or Environment and Society at Key Stage 3.

Venue	Date	Time
<b>Crawfordburn Country Park</b> Bridge Road, South, Inverclyde, Co. West, BT19 1LE	25 March 2009	2-8pm
<b>Ecos Centre</b> Broughshane Road, Ballymore, Co. Antrim, BT41 1XA	1 April 2009	2-8pm
<b>Lough Agency</b> 12 Malone Road, Londonderry, Co. Londonderry, BT47 1AB	8 April 2009	2-8pm
<b>The Coastal Zone</b> 11 Bath Road, Portlough, Co. Antrim, BT16 8AP	22 April 2009	2-8pm
<b>Castle Archdale Country Park</b> Antrim, Co. Antrim, BT41 1EP	29 April 2009	2-8pm
<b>Peatlands Park</b> 11 Donaghadee Road, Dungannon, Co. Tyrone, BT71 4BW	6 May 2009	2-8pm

Check our website [www.niea.environment.gov.uk/wifd](http://www.niea.environment.gov.uk/wifd) or phone (028) 9362 3100 for further information.




---

---

---

---

---

---

---

---



---

---

---

---

---

---

---

---



---

---

---

---

---

---

---

---

## Breakout Sessions

- Breakout groups 1,2,3...
- ~10 mins on each consultation question
- Groups facilitated by CSG chair, catchment officer & presenter
- Nominated scribe & rapporteur
- Rapporteur to give brief feedback from each breakout group
- Feedback used as part of the public consultation [22 Dec 08 to 22 Jun 09] to help us revise our proposals for publishing first River Basin Management Plan in Dec 09.

---

---

---

---

---

---

---

---



---

---

---

---

---

---

---

---