



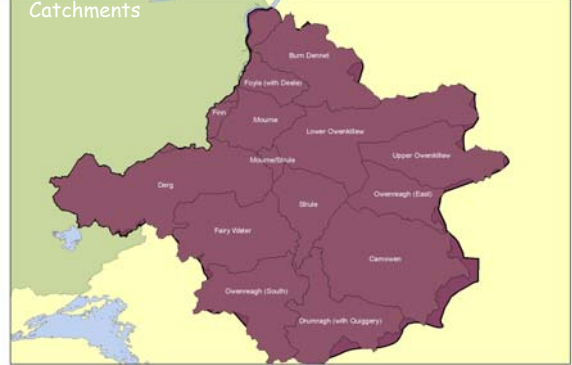
Roles and Responsibilities

- Pollution investigation and response
- Pollution prevention
- Water Quality Monitoring
- Enforcement of Environmental Legislation
- Water (NI) Order Consents (domestic and industrial)

EHS Field Staff regions

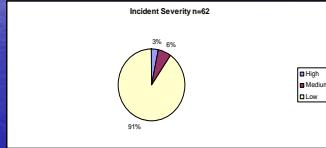


Catchments



NIEA Water Pollution Incident Statistics – Upper Foyle

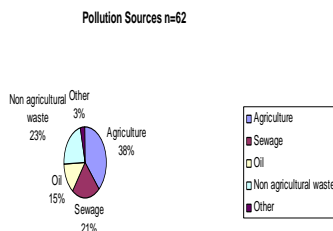
- November 12th 2008 – 29th April 2009.
- 1 High Severity Incidents
- 4 Medium Severity Incidents
- 56 Low Severity Incidents



EHS Water Pollution Incident Statistics

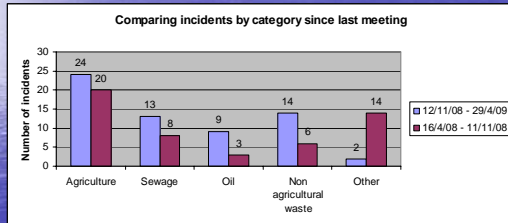
- November 12th 2008-April 29th 2009.
- 61 Confirmed Incidents
- In addition there were a further 24 unconfirmed reports of water pollution.

Reported pollution sources. 12th November 2008- 29th April 2009



Category	12/11/08 to 29/04/09
Agriculture	24
Sewage	13
Oil	9
Non agricultural waste discharge	14
Other	12

Trend in Pollution Incident Categories



Enforcement Issues.

- Water (NI) Order
- The Food and Environment Protection Act 1985
- SSAFO Regulations 2003
- Groundwater Regulations (NI)
- The Sludge (use in Agriculture) Regulations (NI) 1990
- The CAP Single Payment and Support Schemes (Cross Compliance) Regulations.
- The Nitrates Action Programme Regulations (NI) 2006
- Phosphorous (use in agriculture) Regulations (NI) 2006

Enforcement Issues.

- Primary Statutory Instrument is the Water (Northern Ireland) Order 1999.
- From 12th November 2008- 29th April 2009, 5 water pollution incidents involved the collection of statutory samples.

Water Order Prosecutions

- A number of pollution incidents are currently being dealt with by the courts or being considered for prosecution.



Pollution Prevention

- Pollution Prevention team in EHS liaise with local field staff.
- Advise on water pollution prevention issues.
- Assess sites that potentially may be high risk.



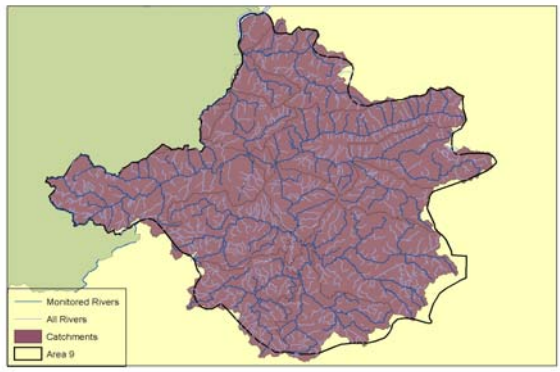
Targetted Catchments

- A number of catchments have been identified as medium/high risk re. pollution.
- These sites are currently being assessed by water quality staff.
- Any pollution hazards or incidents are addressed when identified.
- Routing Burn & Letfern Burn have been assessed.

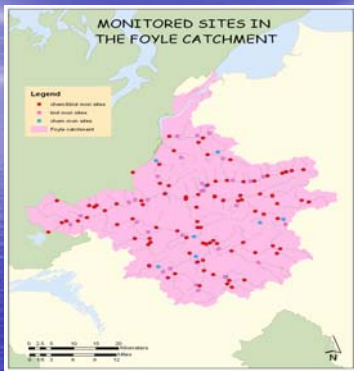
Monitoring

- EC Water Framework Directive
- All surface and groundwater to achieve Good Status by 2015
- Team of trained Water Quality Samplers are out in the field collecting samples routinely.

Monitored River Network



MONITORED SITES IN THE FOYLE CATCHMENT



Monitoring - Chemical

- c.90 sites in Upper Foyle area
- Dissolved Oxygen content < 6mg/l
- Protocol in place to begin investigation.
- No < 6mg/l DO detected in the period 12/11/08-29/04/09

Monitoring - Biological

- Carried out by trained biologists.
- If biotic scores fall by 25% an investigation is initiated by field staff.
- 4 investigations carried out as a result of this process since November 2008.



Other Routine Work

Industrial Discharges.

- 158 samples collected between November 2008 and April 2009.
- 314 samples due to be collected over the period January 1st – December 31st 2009
- 45 low flow inspections for 2009

Agricultural Regulations

- Local field staff are involved in Agricultural Regulation visits to farms with HQ staff.
- Cross Compliance visits
- SSAFO visits
- Notices served.



Wastewater Treatment Works

- Inspections of small WWTW's
- <250 population equivalent
- 24 inspections for 2009.
- Larger works also inspected, Strabane, Greencastle, Loughmacrory, Killen, Mountfield, Spamount



Water Order Consents – Domestic.

- Single Domestic Dwellings
- 317 Applications received in the period 01/04/08-31/03/09
- 484 Applications received in the same period last year.
- 113 Applications received between 12/11/08 – 29/04/09





Thank You.

Any Questions
