

# Upper Foyle Catchment Group



An Agency within the Department of the  
**Environment**  
[www.doeni.gov.uk](http://www.doeni.gov.uk)



INVESTOR IN PEOPLE



**Environment &  
Heritage Service**  
[www.ehsni.gov.uk](http://www.ehsni.gov.uk)

# UPPER FOYLE CATCHMENT Regional Update

Michael Spillane  
Water Quality Inspector  
DoE Environment & Heritage Service

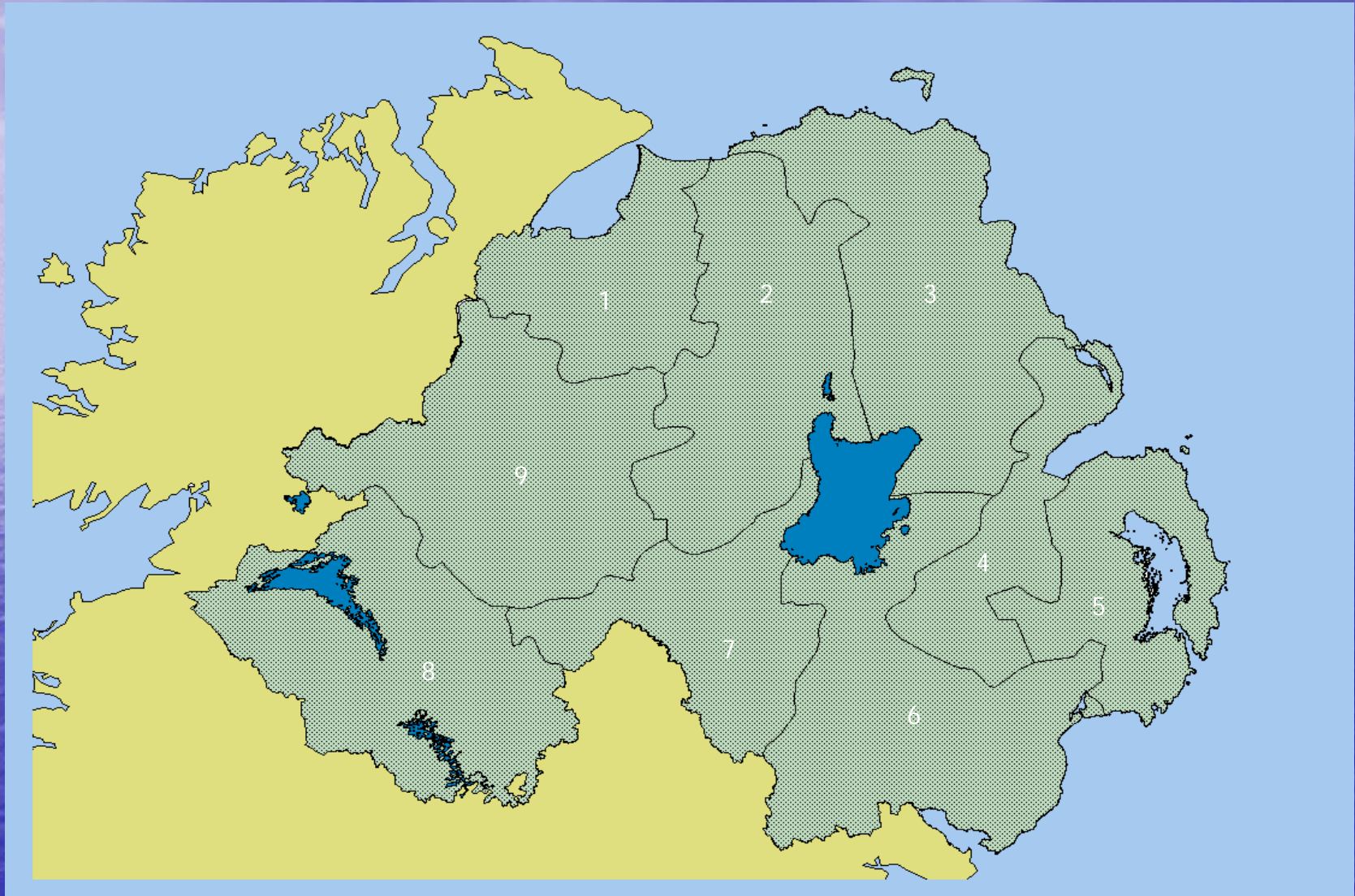
Last Meeting in this Format  
was April 3<sup>rd</sup> 2007

We also had the Significant Water  
Management Issues (SWMI)  
meeting on October 17<sup>th</sup> 2007

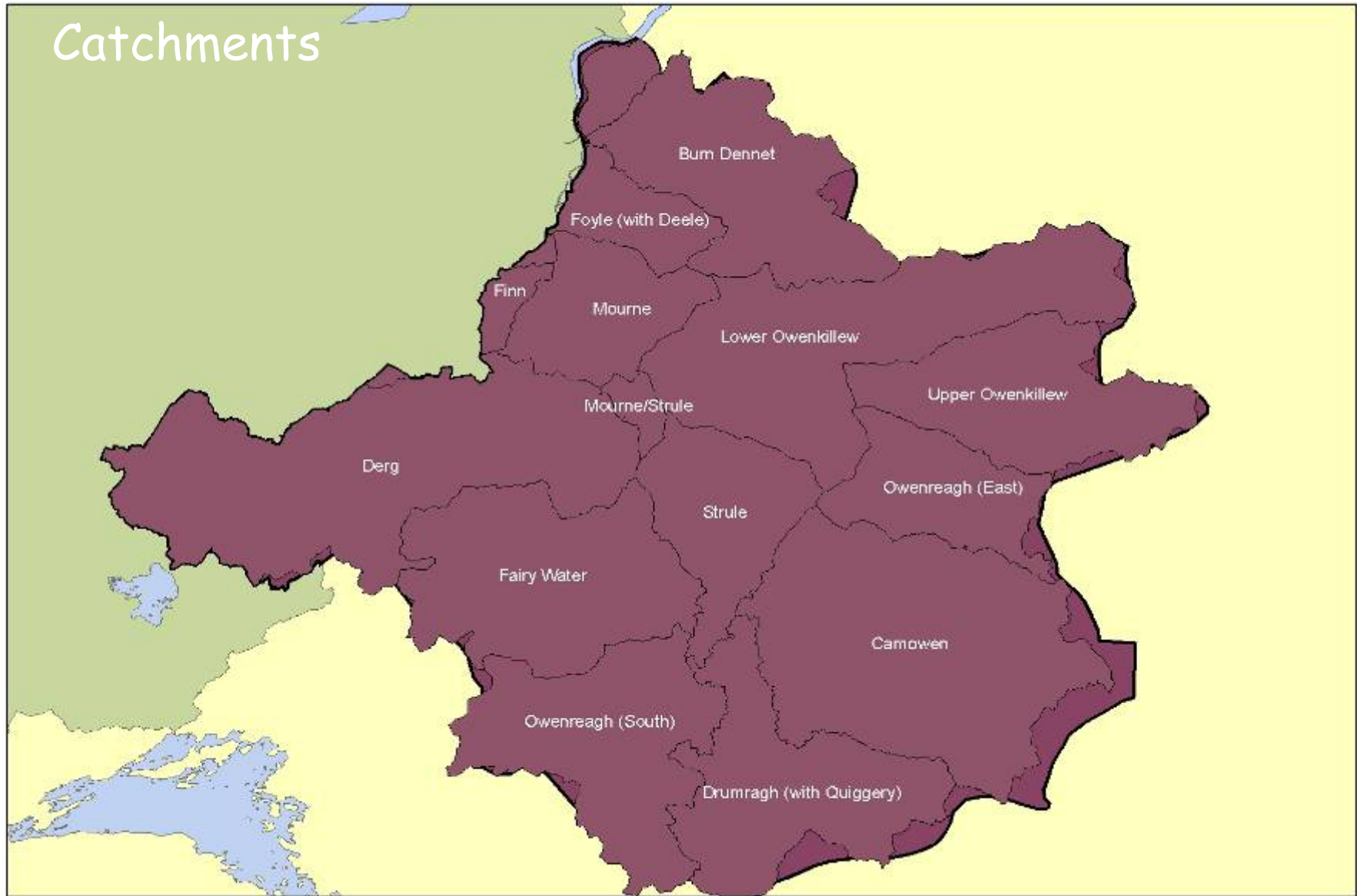
# Roles and Responsibilities

- Pollution investigation and response
- Pollution prevention
- Water Quality Monitoring
- Enforcement of Environmental Legislation
- Water (NI) Order Consents (domestic and Industrial)

# EHS Field Staff regions



# Catchments

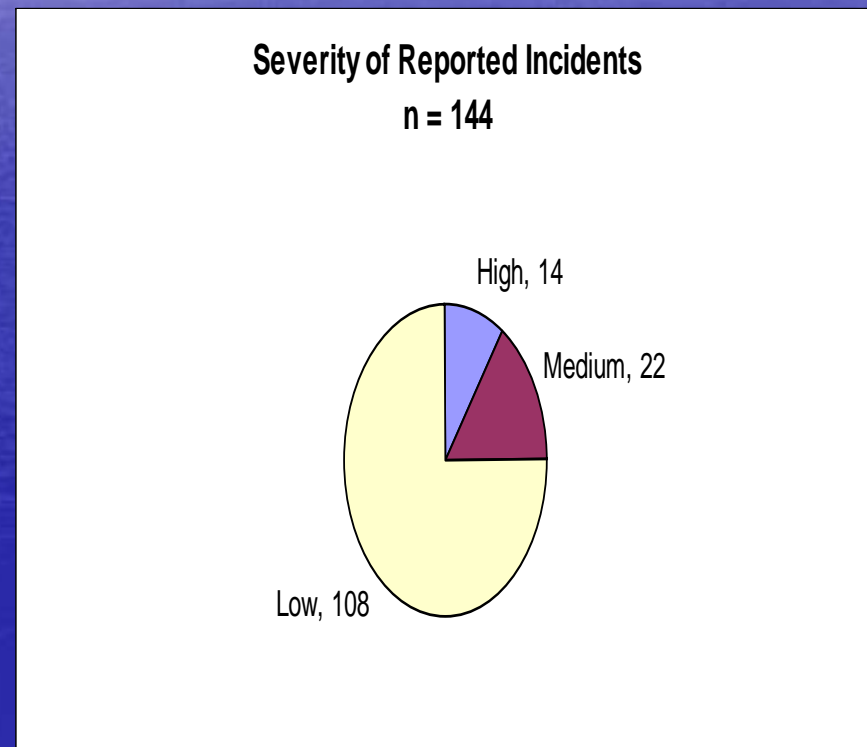


# Field Staff Structure in Upper Foyle

- 1 Senior Water Quality Inspector
- 4 Water Quality Inspectors (1 shared with Enniskillen)
- 2 Water Quality Samplers work in the area.

# EHS Water Pollution Incident Statistics

- April 1<sup>st</sup> 2007 – March 31<sup>st</sup> 2008.
- 14 High Severity Incidents
- 22 Medium Severity Incidents
- 108 Low Severity Incidents

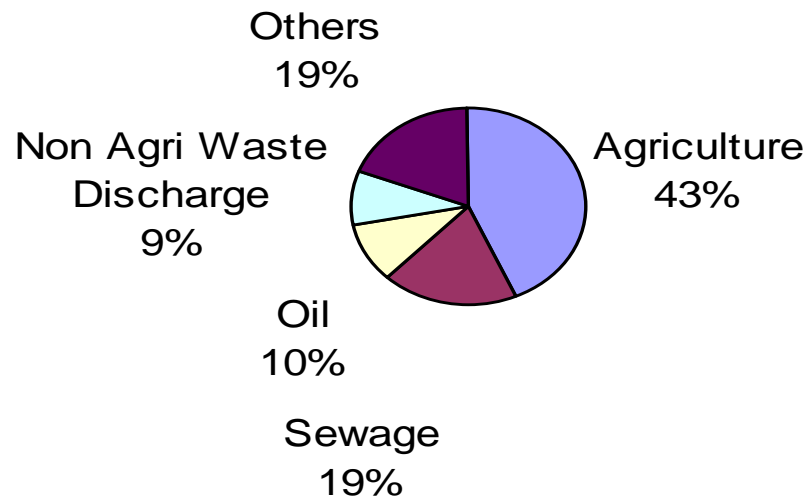


# EHS Water Pollution Incident Statistics

- April 1<sup>st</sup> 2007 – March 31<sup>st</sup> 2008.
- 144 Confirmed Incidents
- In addition there were a further 82 unconfirmed reports of water pollution.

# Upper Foyle Catchment. Reported pollution sources.

**Water Pollution Incidents by Category**  
**n=144**



# High Severity Incidents

- River Derg Ammonia Levels.
- Lough Lee.



# Medium Severity - example



- Oil in Drumragh River – 9<sup>th</sup> November 2007

# Caused by Oil Delivery to Town Centre Shop.

- Estimated loss of oil – 15 -25 litres.
- Spilt during delivery.
- Clean up paid for by company.
- Plan of action to prevent recurrence.
- Warning letter.

# Low Severity incidents



# Enforcement Issues.

- Water (NI) Order
- The Food and Environment Protection Act 1985
- SSAFO Regulations 2003
- Groundwater Regulations (NI)
- The Sludge (Use in Agriculture) Regulations (NI) 1990
- The CAP Single Payment and Support Schemes (Cross Compliance) Regulations.

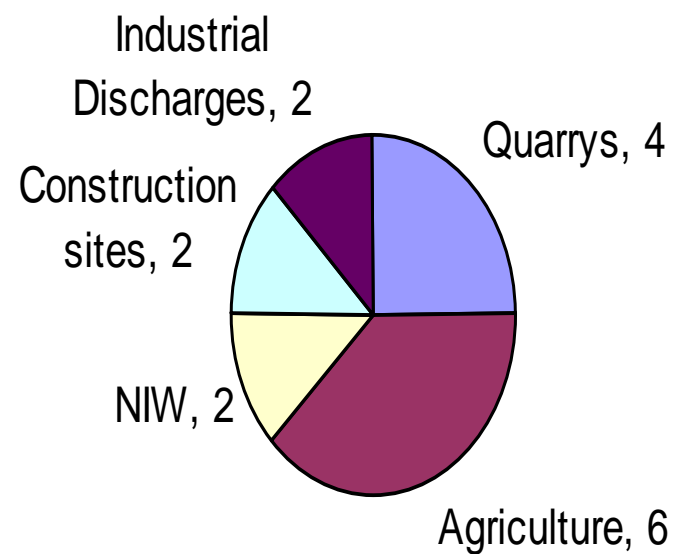
# Enforcement Issues cont...

- Primary Statutory Instrument is the Water (Northern Ireland) Order 1999.
- In the period 1<sup>st</sup> April 2007 – 31<sup>st</sup> March 2008
- 16 water pollution incidents involved the collection of statutory samples.
- 14 Warning letters issued so far.

# Water Order Prosecutions



## Statutory Samples Collected 1/4/07 - 31/3/08



# Pollution Prevention

- Pollution Prevention team in EHS liaise with local field staff.
- Advise on water pollution prevention issues.
- Assess sites that potentially may be high risk.



# Pollution Prevention cont...

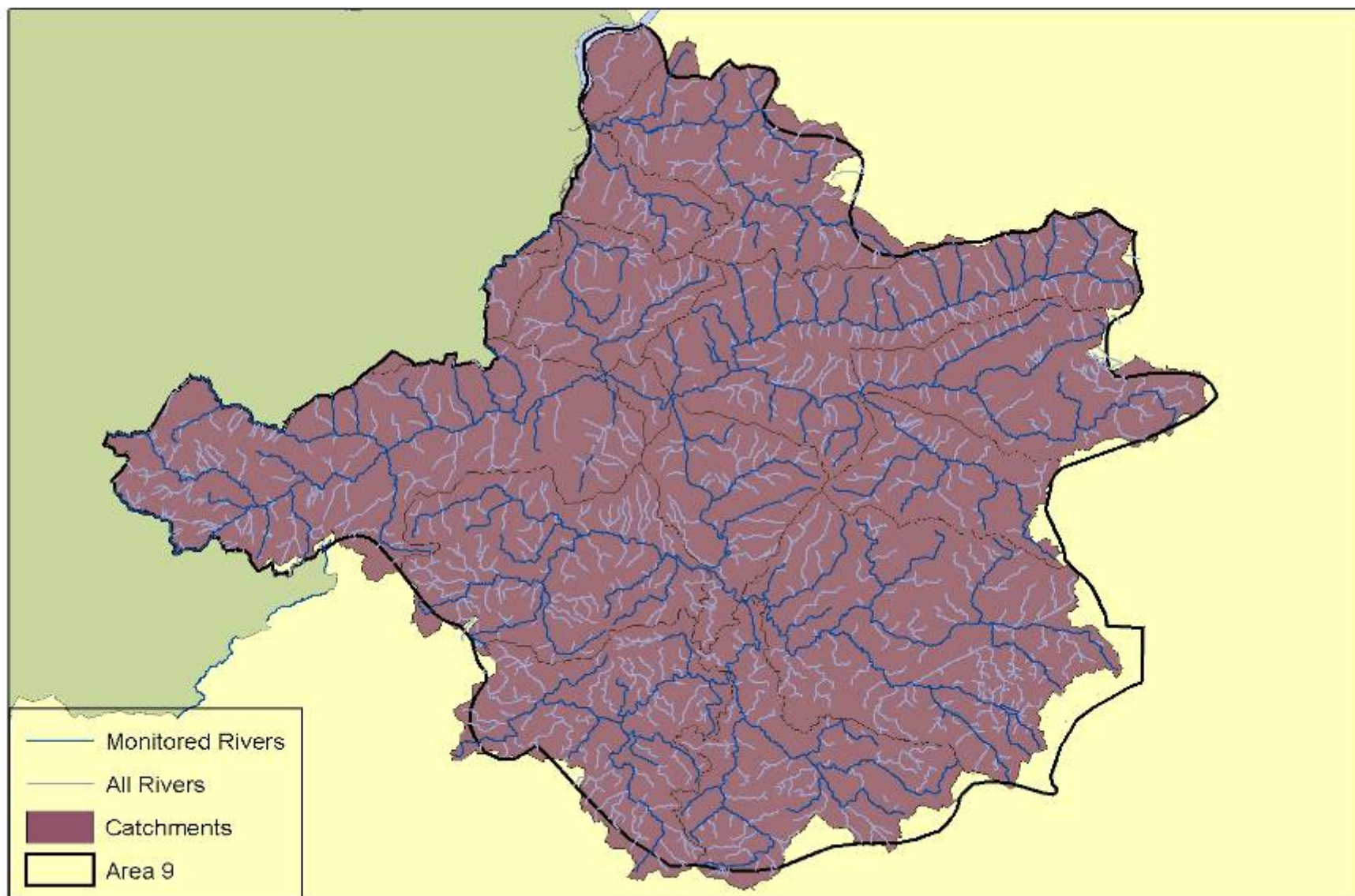
- Used in River Derg Survey.
- Pollution Incident Follow up visits.
- Also used to assess water pollution hazards associated with potential high risk sites e.g. old Nestle Site.

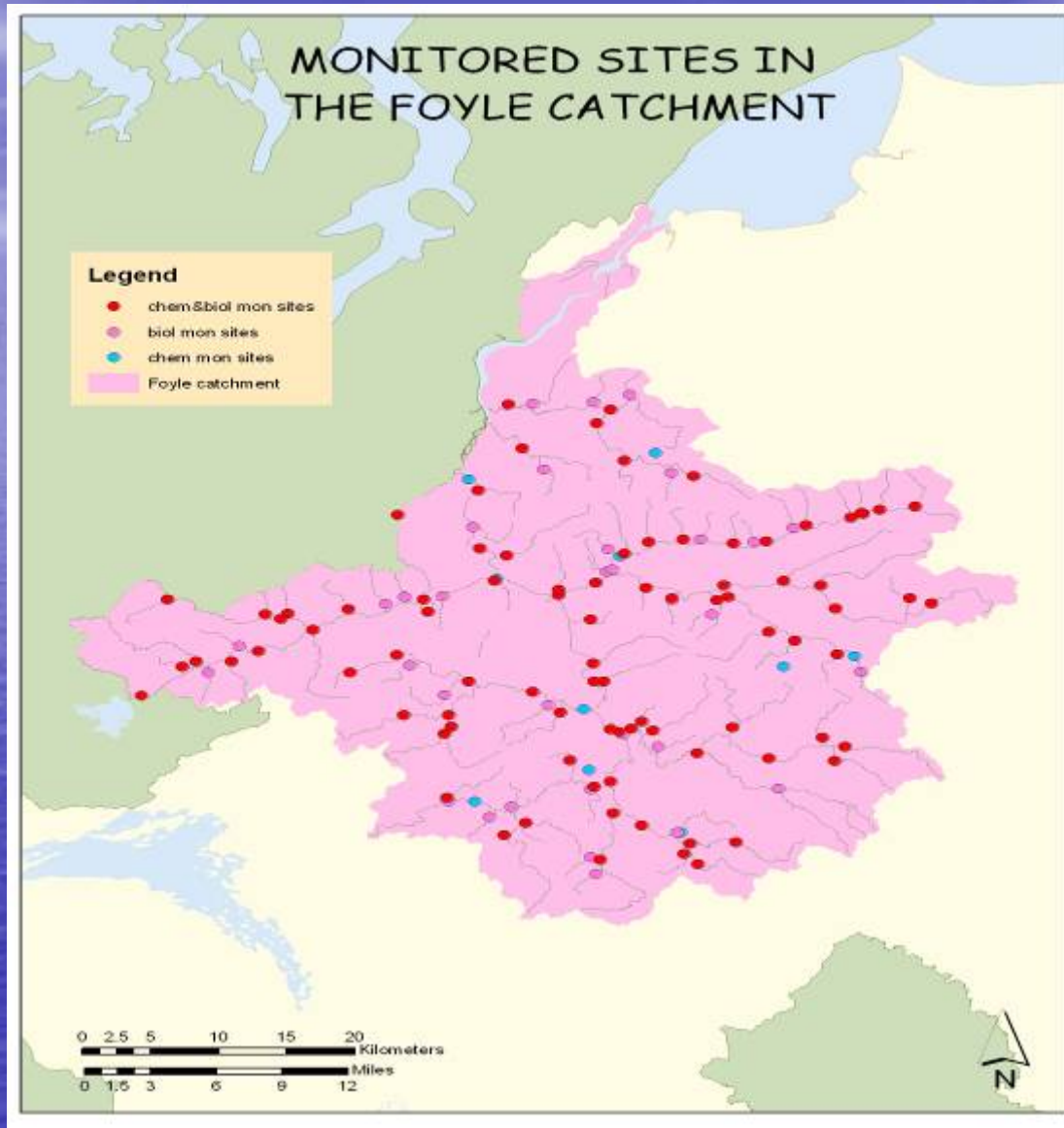


# Monitoring

- EC Water Framework Directive
- All surface and groundwater to achieve Good Status by 2015
- Team of trained Water Quality Samplers out collecting samples routinely.

## Monitored River Network





# Monitoring - Chemical

- 90 sites in Upper Foyle area
- Dissolved Oxygen content  $< 6\text{mg/l}$
- Protocol in place to begin investigation.

# Standards for the chemical GQA

STANDARDS FOR THE CHEMICAL GQA			
GQA Class	Dissolved Oxygen (% sat)	BOD Mg/l	Ammonia mgN/l
	10 percentile	90 percentile	90 percentile
A (Very good)	80	2.5	0.25
B (Good)	70	4	0.6
C (Fairly good)	60	6	1.3
D (Fair)	50	8	2.5
E (Poor)	20	15	9
F (Bad)	less than 20		

# Monitoring - Biological

- Carried out by trained biologists.
- If biotic scores fall by 25% an investigation is initiated by field staff.



# Other Routine Work

- Industrial Premises = 167
- 63 are routinely sampled every month or every quarter

# Agricultural Regulations

- Local field staff are involved in Agricultural Regulation visits to farms with EHS team.
- Cross Compliance visits
- SSAFO visits
- 64 visits this year



# Wastewater Treatment Works

- Inspections of small WWTW's
- <250 population equivalent
- 50 inspections.
  
- Larger works also inspected



# Water Order Consents – Domestic.

- Single Domestic Dwellings
- 484 Applications Received in the period March 31 2007 – April 1<sup>st</sup> 2008.
- Each application requires a site assessment by field staff.

# Domestic Consents





Thank you!

Any Questions?