

Draft River Basin Management Plans

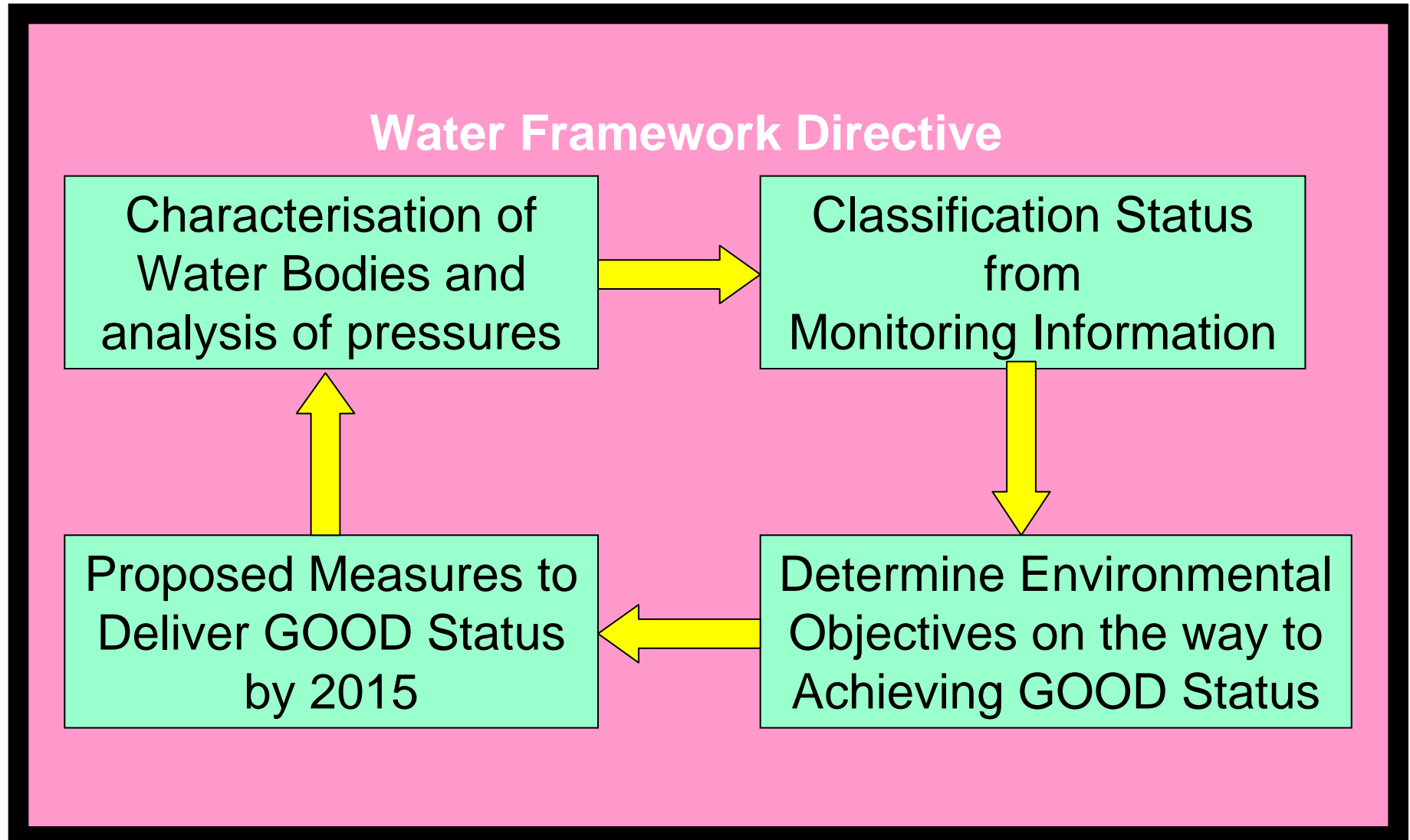
Belfast Lough & Lagan Catchment
Stakeholder Group

Bridgeen Magorrian

Overview

- Background of the overall river basin planning process and how it fits into the Directive
- Classification results for Belfast Lough & Lagan Catchment Stakeholder Group Area
- What is likely to appear in the draft plans
- What is the time line for the plans
- How people can become involved
- What will happen between the draft and final Plans

Water Framework Directive Steps



What is a River Basin Management Plan?



The plans cover:

- groundwater
- wetlands
- rivers
- lochs/lakes/loughs
- transitional waters (eg estuaries)
- coastal waters

Set out the objectives to be achieved and the actions required.

Draft River Basin Management Plans

- 1 NI only draft plan - North Eastern
- 3 shared plans with NI & RoI - North Western, Neagh Bann and Shannon International River Basin Districts
- Tiered approach - combination of published summary document and technical appendices available on-line
- Will include information on classification status results, objectives and measures

Draft River Basin Management Plans

Tiered approach;

- NI/RoI Coordination & Summary Statistics for International River Basin Districts
- Summary of draft River Basin Management Plans
- interactive web map
- supporting technical documents

NIEA Map Viewer

File Edit View Favorites Tools Help

Google | Go | Bookmarks | 3 blocked | Check | AutoLink | AutoFill | Send to | Settings

NIEA Northern Ireland Environment Agency

DOE An Agency within

Comments - Terms and Conditions

Quick Start Guide

Map View

Surface Water Data

Groundwater data

High
Good
Moderate
Poor
Bad

0 10 20 Kilometers

Done

Internet 100%

start | Yahoo - Microsoft | NIEA Map Viewer ...

NIEA Map Viewer

File Edit View Favorites Tools Help

Google | Go | Bookmarks | 3 blocked | Check | AutoLink | AutoFit | Send to | Settings

NIEA Map Viewer

NIEA Northern Ireland Environment Agency
www.niea-environment.gov.uk

An Agency within **DOE**

[Comments](#) - [Terms and Conditions](#)

Quick Start Guide

Map View

Surface Water Data

Groundwater data

Blue	High
Green	Good
Yellow	Moderate
Orange	Poor
Red	Bad

Done


start | Inbox - Microsoft | NIEA Map Viewer ... | Internet | 100% | 15:19

NIEA Map Viewer


File Edit View Favorites Tools Help

Google Go Bookmarks 3 blocked Check AutLink AutoFill Send to Settings

NIEA Map Viewer

NIEA Northern Ireland Environment Agency  An Agency within DOE

[Comments](#) - [Terms and Conditions](#)



High
Good
Moderate
Poor
Bad

Quick Start Guide

Map View

Surface Water Data

Waterbody name:
River Lagan

Classification:
Moderate (Low confidence)

2015 target classification: Moderate
2021 target classification: Good
2027 target classification: Good
Risk: 1a

Groundwater data

Done Internet 100% 15:19

start Inbox - Microsoft ... NIEA Map Viewer ...

NIEA Map Viewer

File Edit View Favorites Tools Help

Google | Go | Bookmarks | 3 blocked | Check | AutoLink | AutoFit | Send to | Settings

NIEA Map Viewer

NIEA Northern Ireland Environment Agency
www.niea-environment.gov.uk

An Agency within **DOE**

[Comments](#) - [Terms and Conditions](#)

Quick Start Guide

Map View

Surface Water Data

Groundwater data

Done

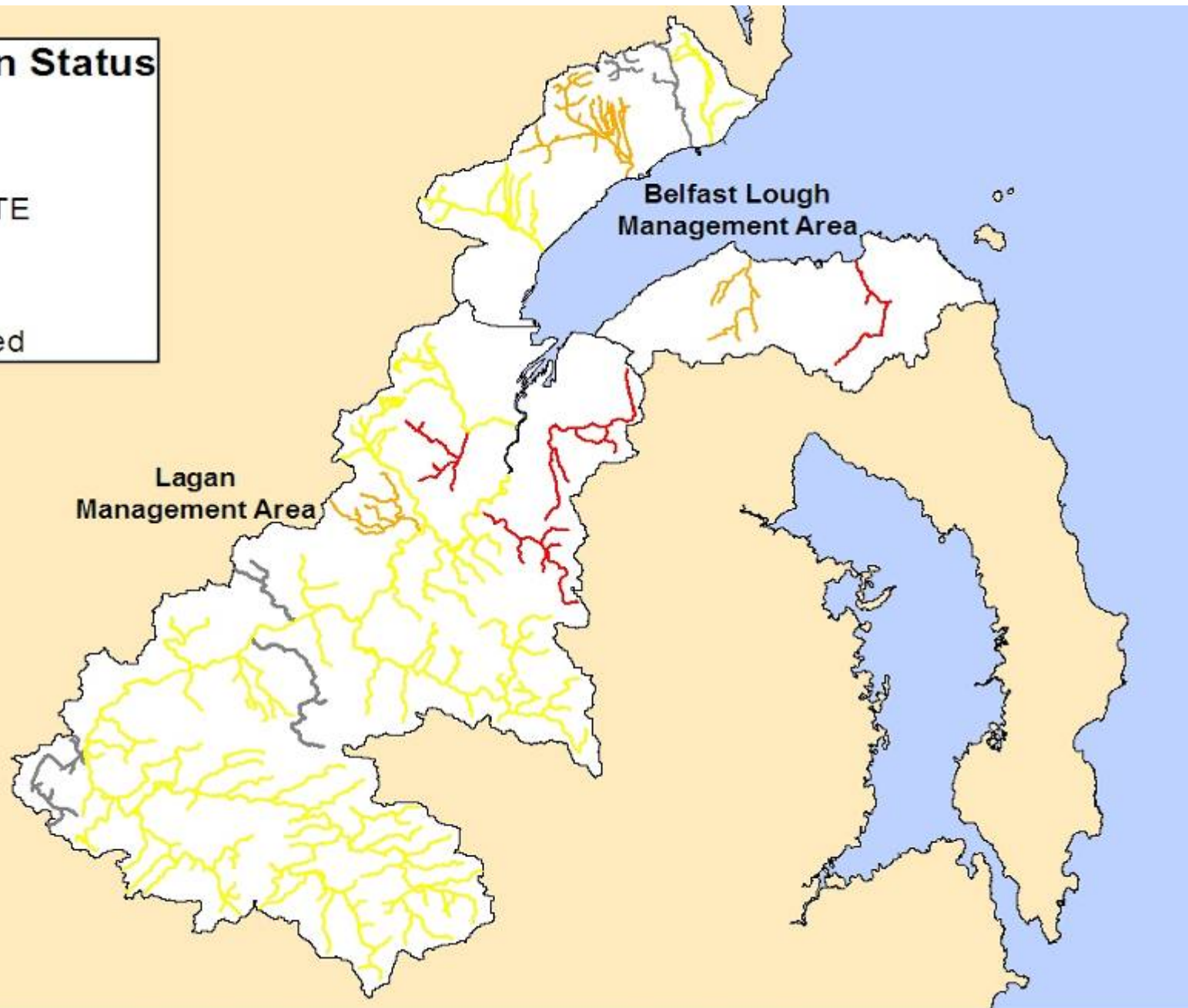
start | Inbox - Microsoft | NIEA Map Viewer ... | Internet | 100% | 15:19

Status Classification for Belfast Lough & Lagan Catchment Stakeholder Group Area

- Rivers
- Lakes
- Coastal and Transitional waters (estuaries)
- Groundwaters

Classification Status

- HIGH
- GOOD
- MODERATE
- POOR
- BAD
- Unclassified

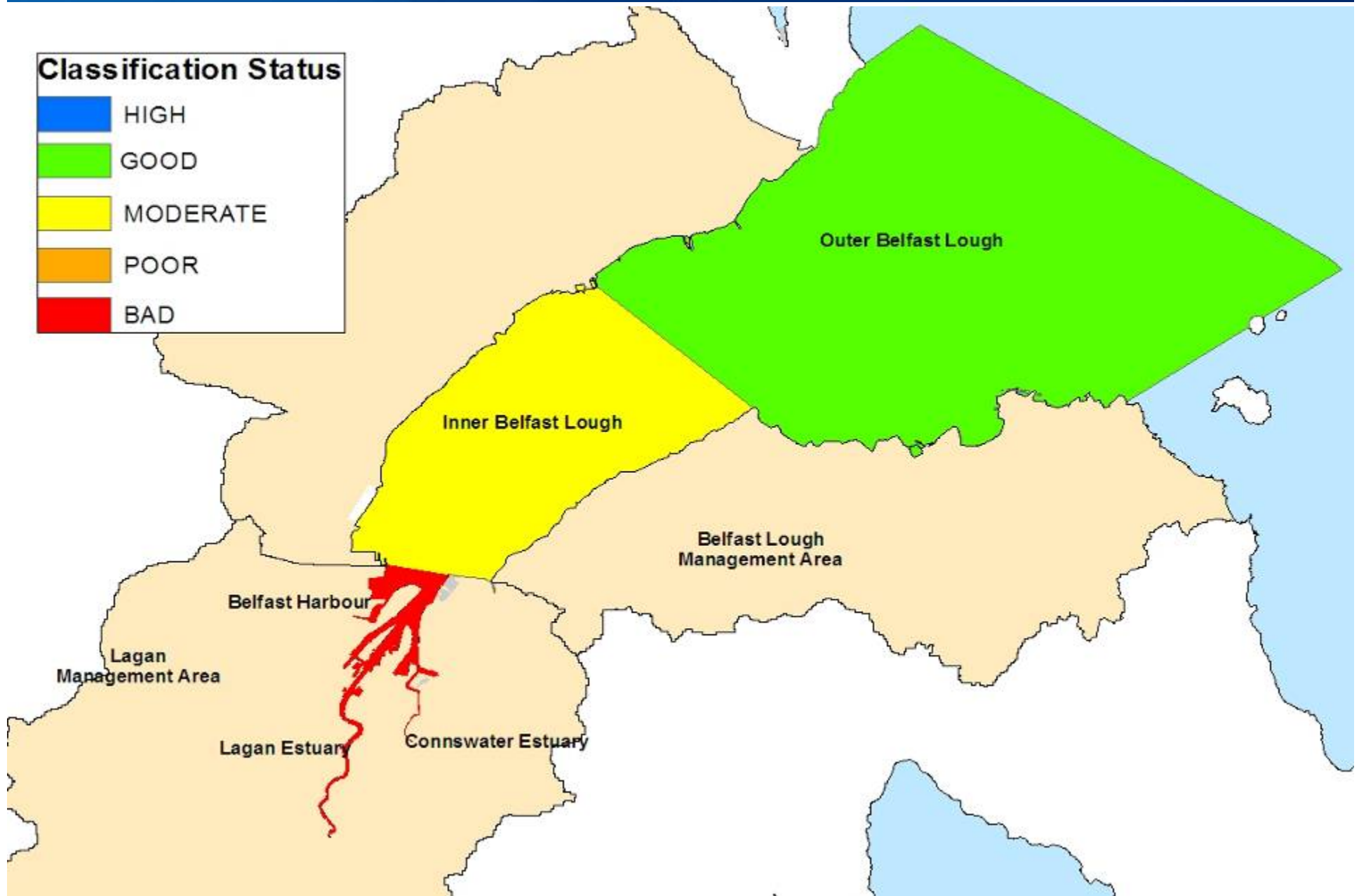


Summary of River Water Body Status

River Status as % of Total River Length (28 water bodies)							
Management Area	High	Good	Moderate	Poor	Bad	Not Yet Assessed	% Total
Belfast Lough	-	-	35	45	8	12	100
Lagan	-	-	80	4	10	6	100

Classification Status

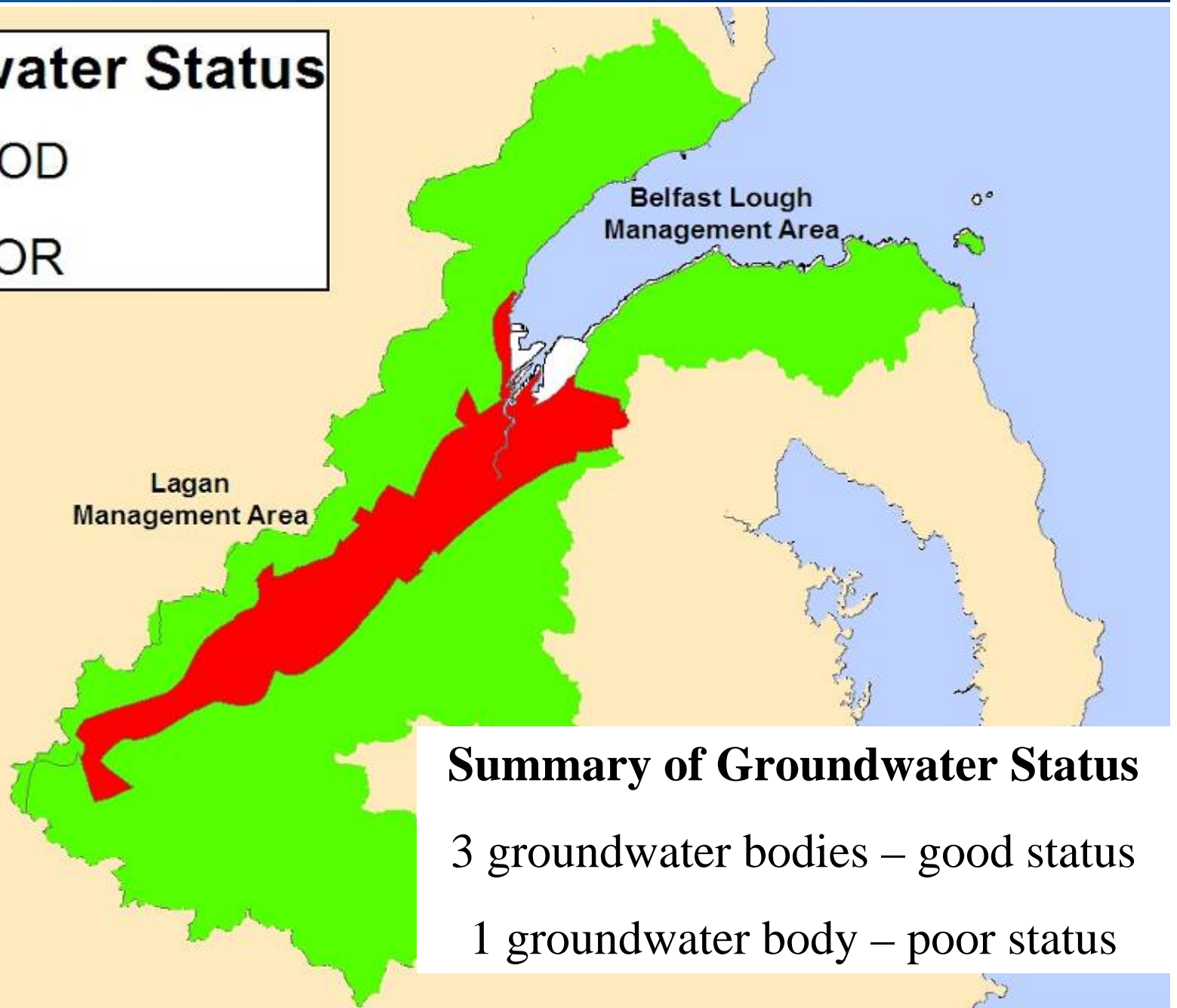
	HIGH
	GOOD
	MODERATE
	POOR
	BAD



Summary of Coastal and Transitional Water Status

Coastal and Transitional Water Status as % of Total Area (5 water bodies)					
Management Area	High	Good	Moderate	Poor	Bad
Coastal Waters					
Outer Belfast Lough		72			
Inner Belfast Lough			26		
Belfast Harbour					2
Transitional Waters					
Lagan Estuary					75
Connswater Estuary					25

Groundwater Status



Summary of Groundwater Status

3 groundwater bodies – good status

1 groundwater body – poor status

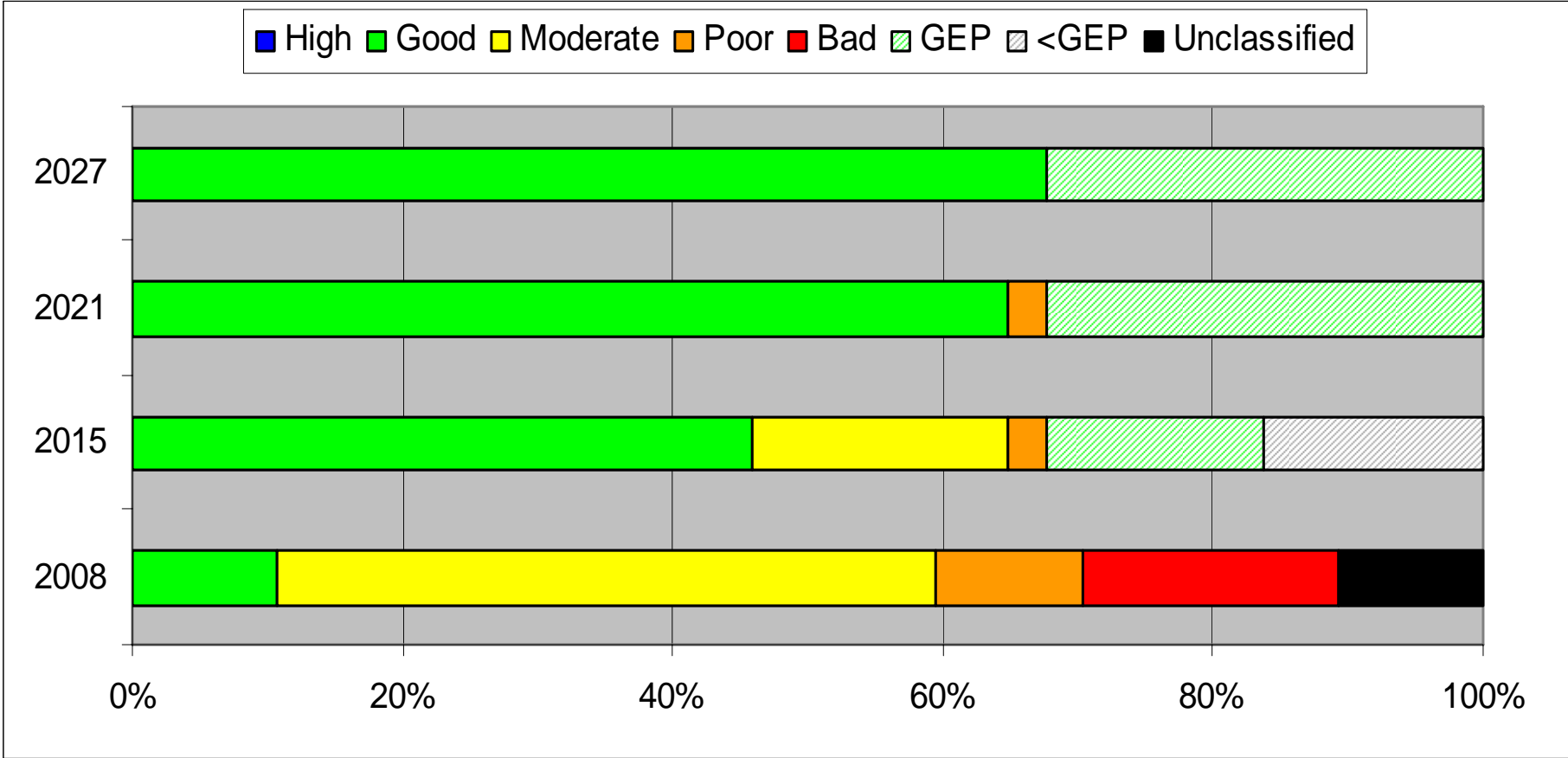
Overall status classification for Belfast Lough & Lagan

- **10.8% good or better**
- **78.4% not good**

Rules for Prioritising Provisional Objective Setting

- Rule 1: Where a water body is at **moderate** status in **2008** the objective for **2015** is **good** status.
- Rule 2: Where a water body is at **poor** status in **2008** the objective for **2015** is **moderate** status and the objective for **2021** is **good** status.
- Rule 3: Where a water body is at **bad** status in **2008**, the objective for **2015** is **moderate** status and the objective for **2021** is **good** status

Objectives for Belfast Lough & Lagan



Programme of Measures

**Pre-WFD national and EU
measures**

UWWTD; Habitats Directive; etc

Existing local initiatives

**Fisheries management projects;
etc**

Programme of Measures

- actions funded / legislation in place and timetabled for 2008-11 Programme for Government
- actions not funded/new legislation for 2011-14 Programme for Government

Types of Measures

- Northern Ireland Water Capital Investment Programme
[2007 - 2010] [2010 -2012] [2012 - 2017]
- Review polluting impact of septic tanks and develop best practice guidance
- Low/zero phosphorus detergents

Types of Measures

- Improved education and awareness campaigns
- Targeted advisory visits and inspections
- Develop Catchment models
- Promotion and adoption of Sustainable Urban Drainage Systems
- Installation of fish passes / river restoration programme

Timeline

Dec 2008	Publish draft River Basin Management Plan for 6 month consultation
Dec 2009	Publish 1st River Basin Management Plan
Dec 2010	Pricing policies for cost recovery of water services
Dec 2012	Programme of measures operational
Dec 2013	Prepare for 2nd River Basin Management Plan
Dec 2015	Achieve Environmental Objectives – 1st River Basin Management Plan

HOW TO GET INVOLVED

- Northern Ireland Stakeholder Forum / 9 Catchment Stakeholder Groups
- News paper adverts and wide distribution of hardcopy summary draft Plan
- www.ni-environment.gov.uk/wfd
- Launch in Jan 09
- Next round of Catchment Stakeholder Group meetings. Proposed series of information days – Feb/Mar 09 ?

From draft to final Plan

- Public consultation on draft Plans
[Dec 2008 to Jun 2009]
- Status classification results updated - new tools still under development and trialling
- Objectives updated
- Programmes of measures updated
- Consultation responses considered

Our aim is to protect, conserve
and promote our natural and built
environment for the benefit of
present and future generations.

