



Delivering action for the Ballinderry River through partnership working

Mark Horton BSc(Hons) MSc

Upper Neagh Bann CSG – May 2011



25 years on the Ballinderry River 1984 – 2009

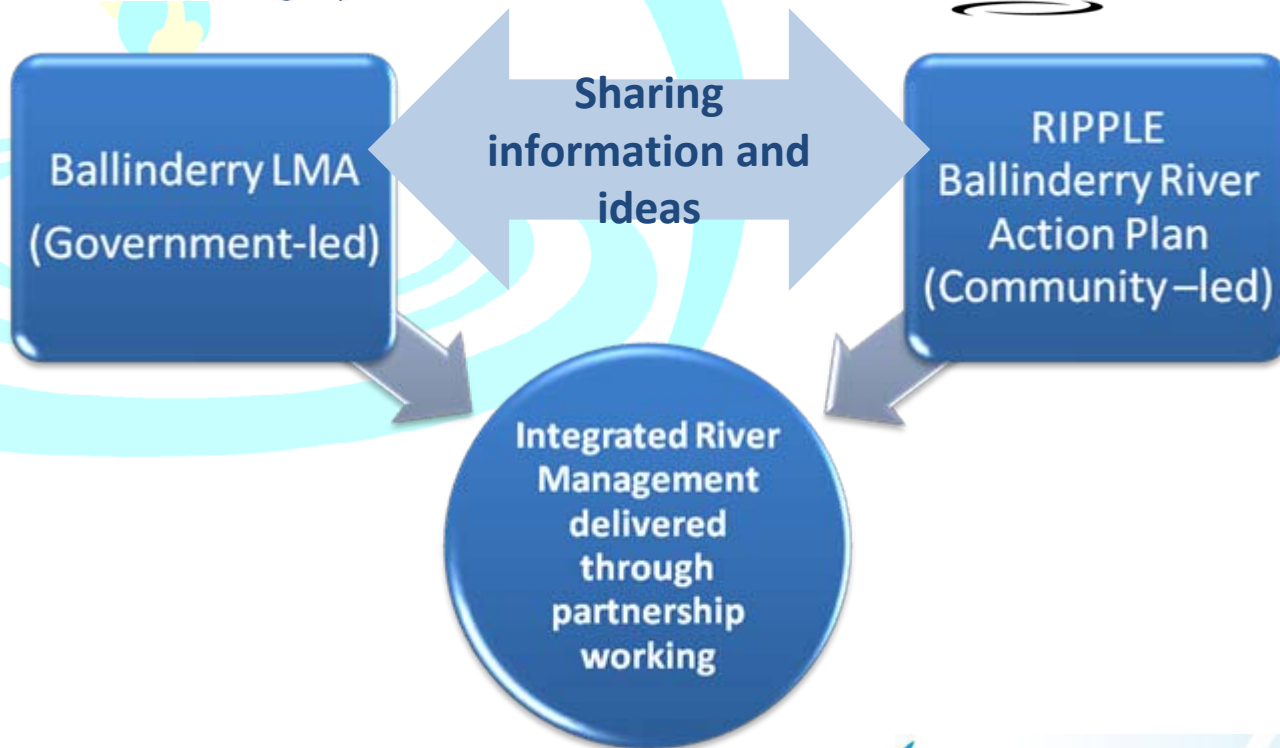
ballinderry
river enhancement

association

Planning for a better Ballinderry River



Ripple



25 years on the Ballinderry River 1984 – 2009

ballinderry
river enhancement

association

The Ballinderry Riverfly Project



25 years on the Ballinderry River 1984 – 2009

ballinderry
river enhancement
association

Why the need for this project on the Ballinderry?

- Ongoing intermittent and persistent pollution pressures in the catchment – AMI means more eyes on the river
- Identified the need for a 'local' water quality monitoring group through a community-led river action plan (RIPPLE)
- NIEA operational monitoring is being reduced from annual to 3-year rolling programme due to resource constraints



25 years on the Ballinderry River 1984 – 2009

ballinderry
river enhancement

association

Setting up NI's first River fly monitoring project

- January 2010 – BREA/RP/NIEA initial meeting
 - Pilot project agreed
 - Pilot project is supporting WFD Local Management Area Plan for Ballinderry
 - June 2010 – BREA secures funding - National Lottery's Big Lottery Fund
 - Equipment/training for 24 volunteers
 - GIS to pilot recording of data spatially – first for AMI
-
- Former Minister for the Environment, Mr Edwin Poots MLA, announces at Stormont that his Department is supporting the pilot



25 years on the Ballinderry River 1984 – 2009

ballinderry
river enhancement

association

Training the volunteers

October 2010 - First 12 volunteers trained by the RP

NIEA representatives invited observe training

Volunteers identify potential sampling points - visited by the AMI Coordinator

Approved sites' details sent to NIEA for Trigger Levels to be set

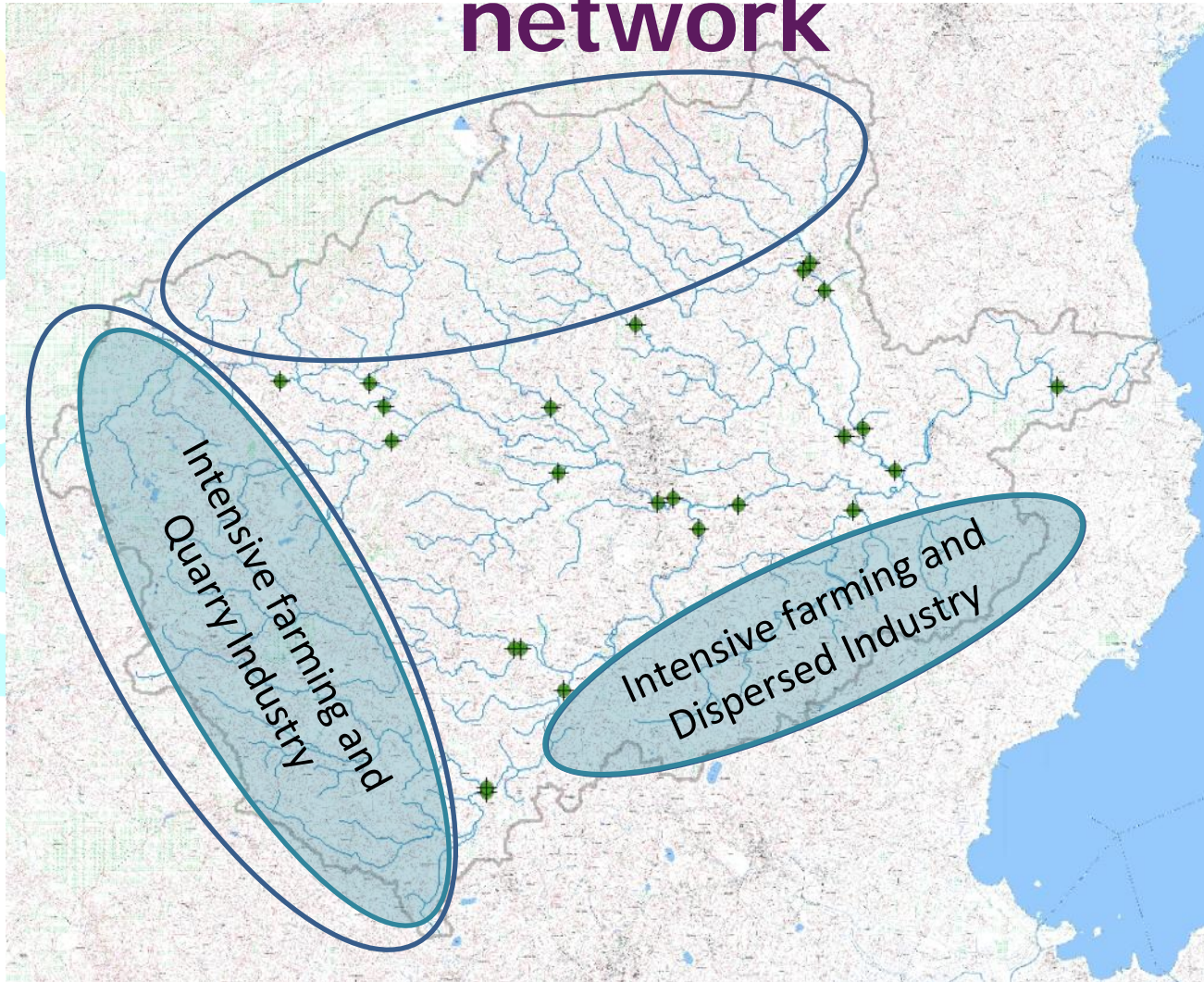
Last 12 volunteers to be trained by RP July 2011



ballinderry
river enhancement

25 years on the Ballinderry River 1984 - 2009 association

NIEA's regular statutory monitoring network



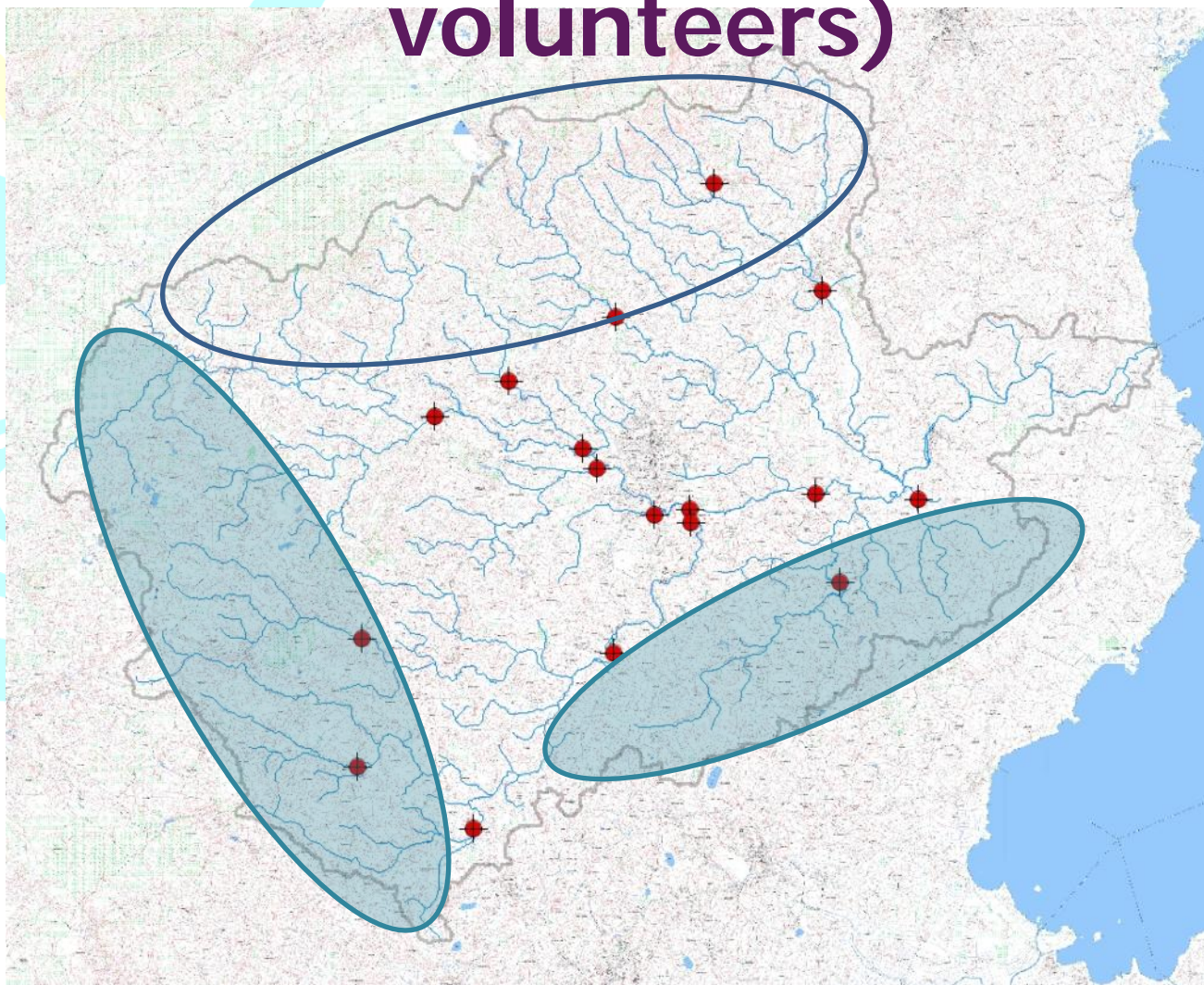
OSNI map



25 years on the Ballinderry River 1984 – 2009

ballinderry
river enhancement
association

Ballinderry AMI sites so far (first 12 volunteers)



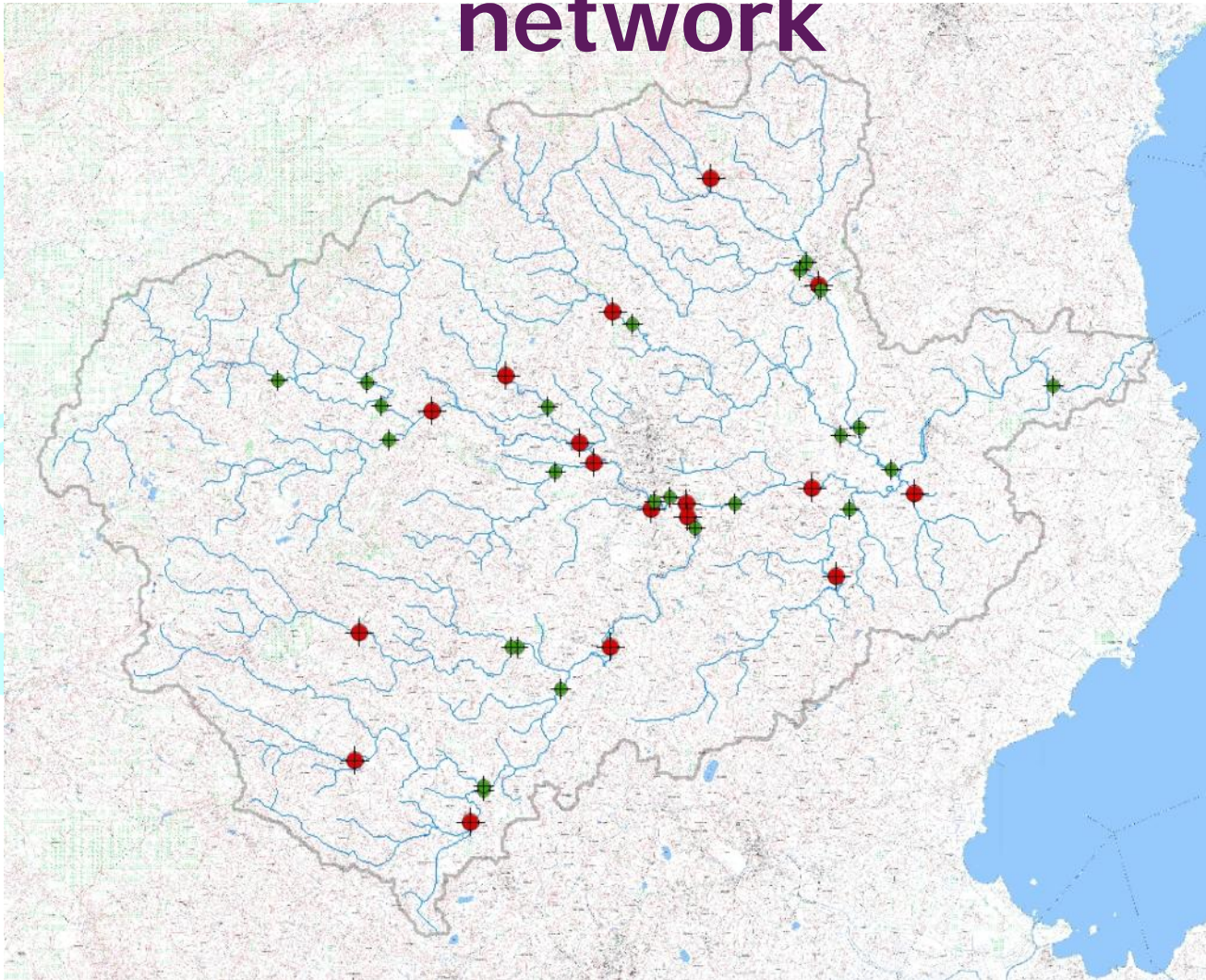
OSNI map



25 years on the Ballinderry River 1984 – 2009

ballinderry
river enhancement
association

Combined NIEA/AMI monitoring network



OSNI map



25 years on the Ballinderry River 1984 – 2009

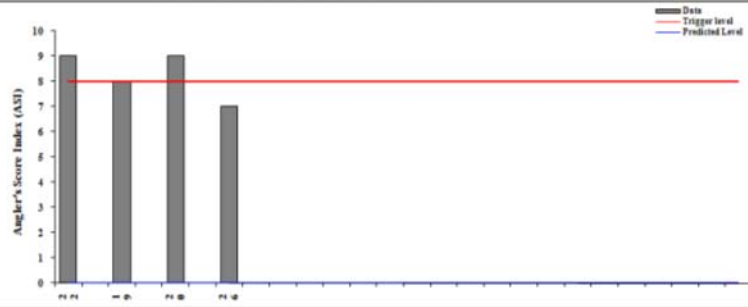
ballinderry
river enhancement

association

January 2011 Data starts to come in...



Angler's Monitoring Initiative (AMI)
Rock River - Slatequarry Bridge 2011



Predicted level
EA - Trigger level

8
8

* Estimated number is optional

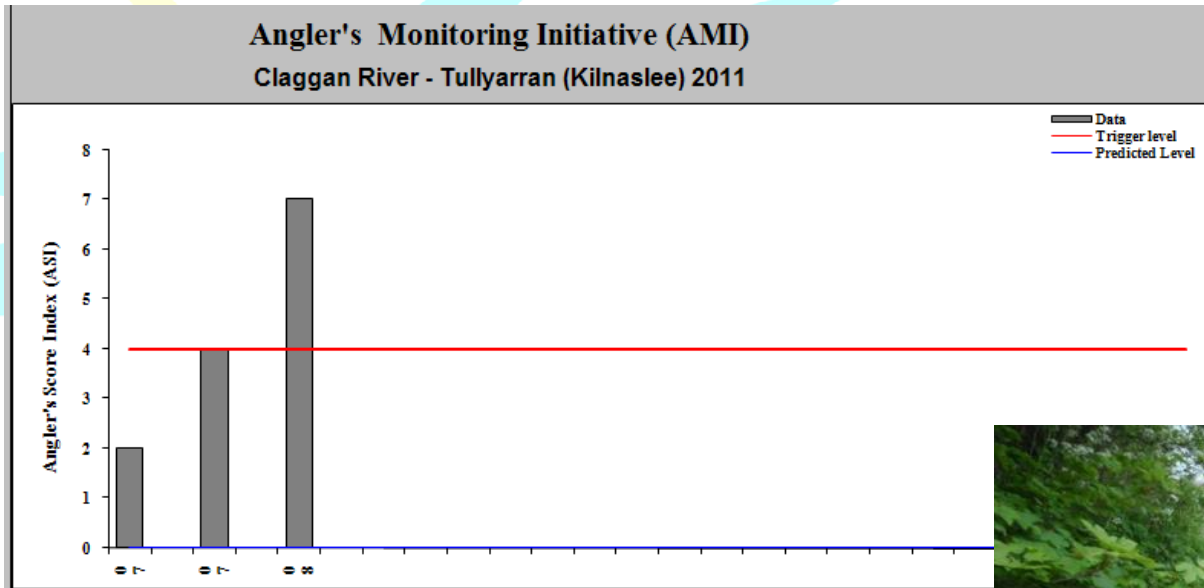
Date	22.01.11		19.02.11		20.03.11		26.04.11					
	Category (A-D)	Estimated Number	Category (A-D)	Estimated Number	Category (A-D)	Estimated Number	Category (A-D)	Estimated Number	Category (A-D)	Estimated Number	Category (A-D)	Estimated Number
Target Groups:												
Cased caddis	A	4	A	5	A	1	B	10				
Caseless caddis	A	1	A	2	A	1						
Mayfly (Ephemeridae)												
BWO (Ephemerellidae)												
Flat bodied (Heptageniidae)	B	50	B	40	B	50	B	20				
Olives (Baetidae)	B	50	B	30	B	30						
Stoneflies	A	6	A	5	B	20	A	5				
Freshwater shrimp	B	50	A	8	A	5	B	20				
Total		9		8		9		7		0		0
Predicted Level		0		0		0		0		0		0



ballinderry
river enhancement

25 years on the Ballinderry River 1984 - 2009 association

The river starts to improve...



...and a closer
eye is kept on
problems



25 years on the Ballinderry River 1984 - 2009

ballinderry
river enhancement

association



Banks of the Ballinderry FAIR

Saturday 28 May 2011
12pm-5pm
Wellbrook Beetling Mill, Cookstown

FREE Entry to the Fair
All activities are FREE

(Entry fee for Mill tours/Free to National Trust members)

This is your chance to get up close and personal with your local river. Join us for fun and games for all the family including:

- Riverbank games & crafts
- The 'Beneath the ripples' Aquarium
- Watery mini-beasts hunt
- Duck race
- Tours of the Mill

...and much more



Ripple

The Banks of the Ballinderry Fair is part of the RIPPLE programme of events. RIPPLE is a WWF project run in partnership with Ballinderry Fish Hatchery Ltd.

www.wwf.org.uk/ripple



ballinderry river enhancement association

25 years on the Ballinderry River 1984 - 2009