

Bush and Glens Catchment Stakeholder Meeting

19th April 2011

Update on our Work
Since October 2010

Conor Symington
Senior Water Quality Inspector

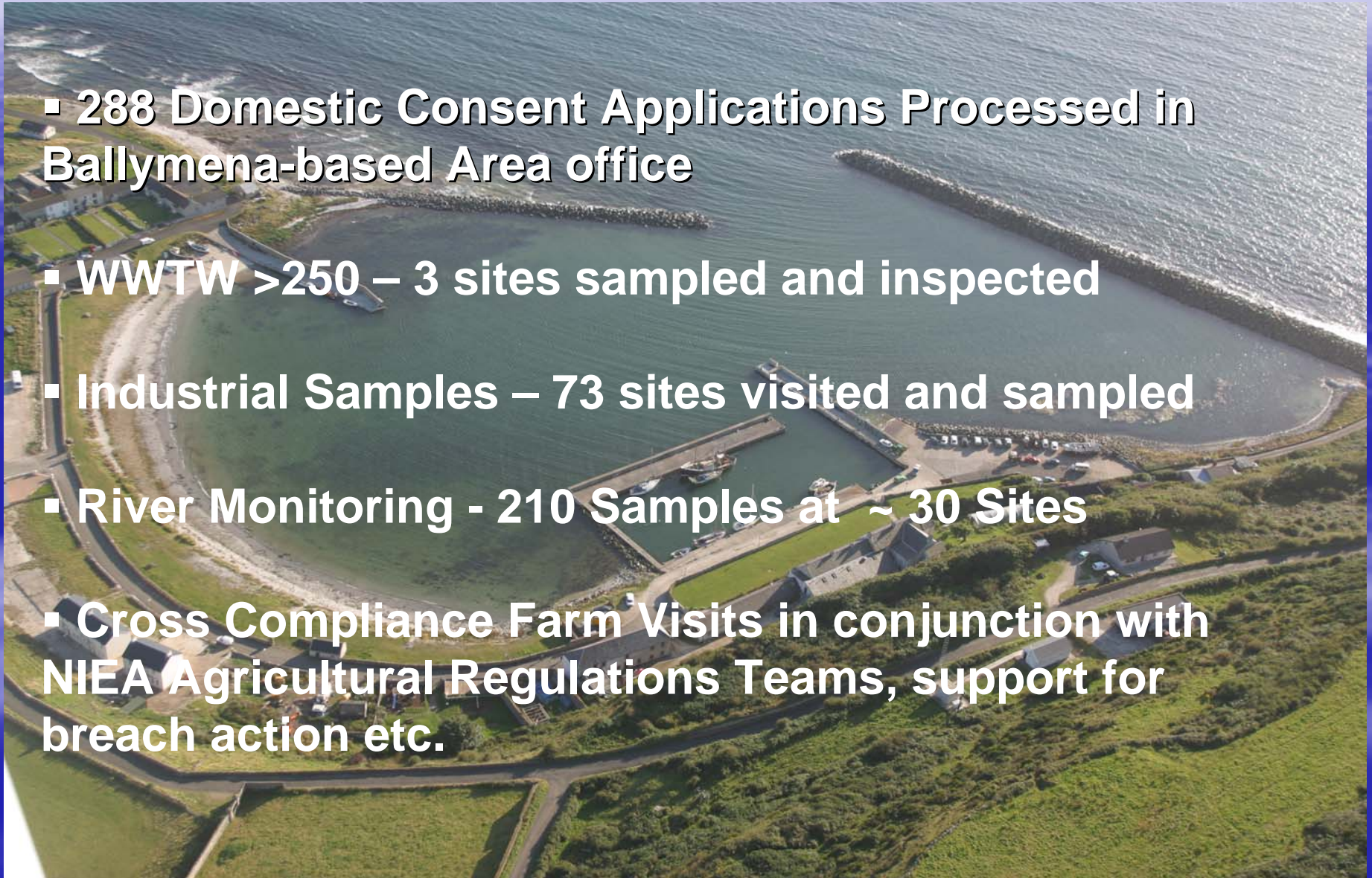
Pollution Hotline

0800 80 70 60



Work Statistics

- 288 Domestic Consent Applications Processed in Ballymena-based Area office
- WWTW >250 – 3 sites sampled and inspected
- Industrial Samples – 73 sites visited and sampled
- River Monitoring - 210 Samples at ~ 30 Sites
- Cross Compliance Farm Visits in conjunction with NIEA Agricultural Regulations Teams, support for breach action etc.



Pollution Incident Statistics

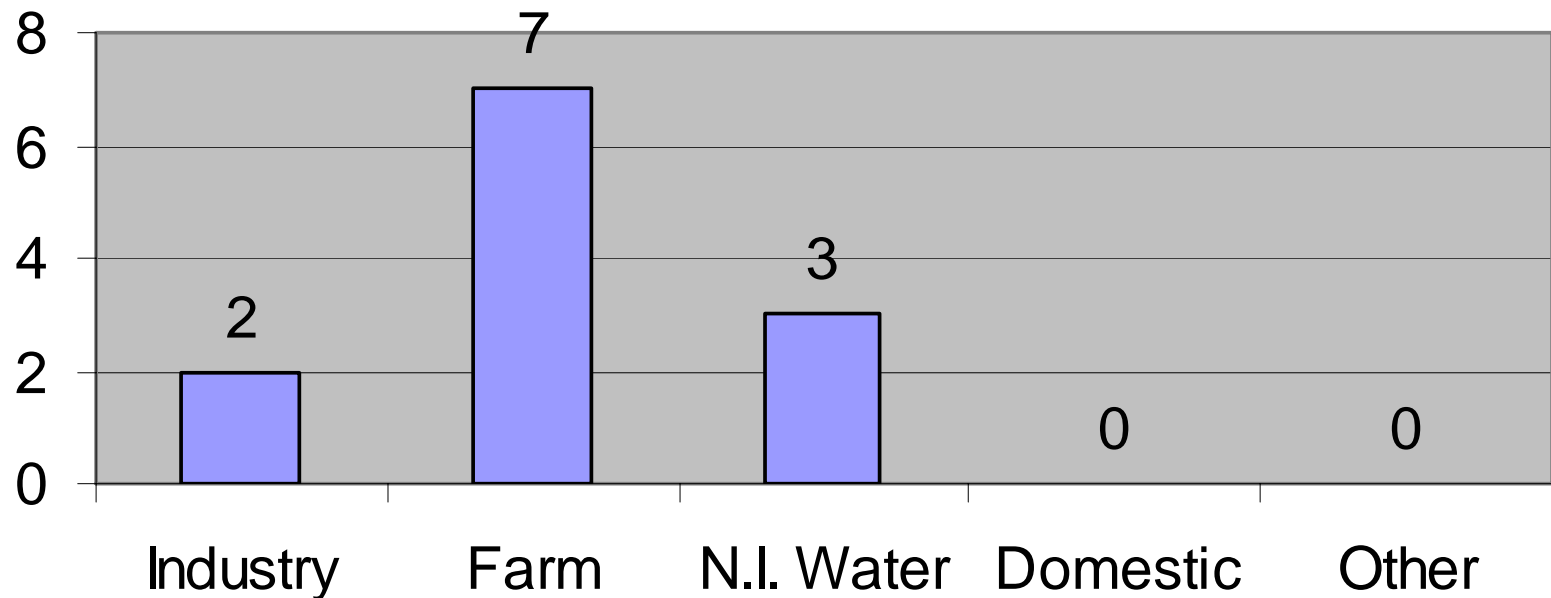
Oct 2010 – April 2011

- 25 Incidents Received
- 12 Substantiated, 13 NPF

Pollution Hotline

0800 80 70 60

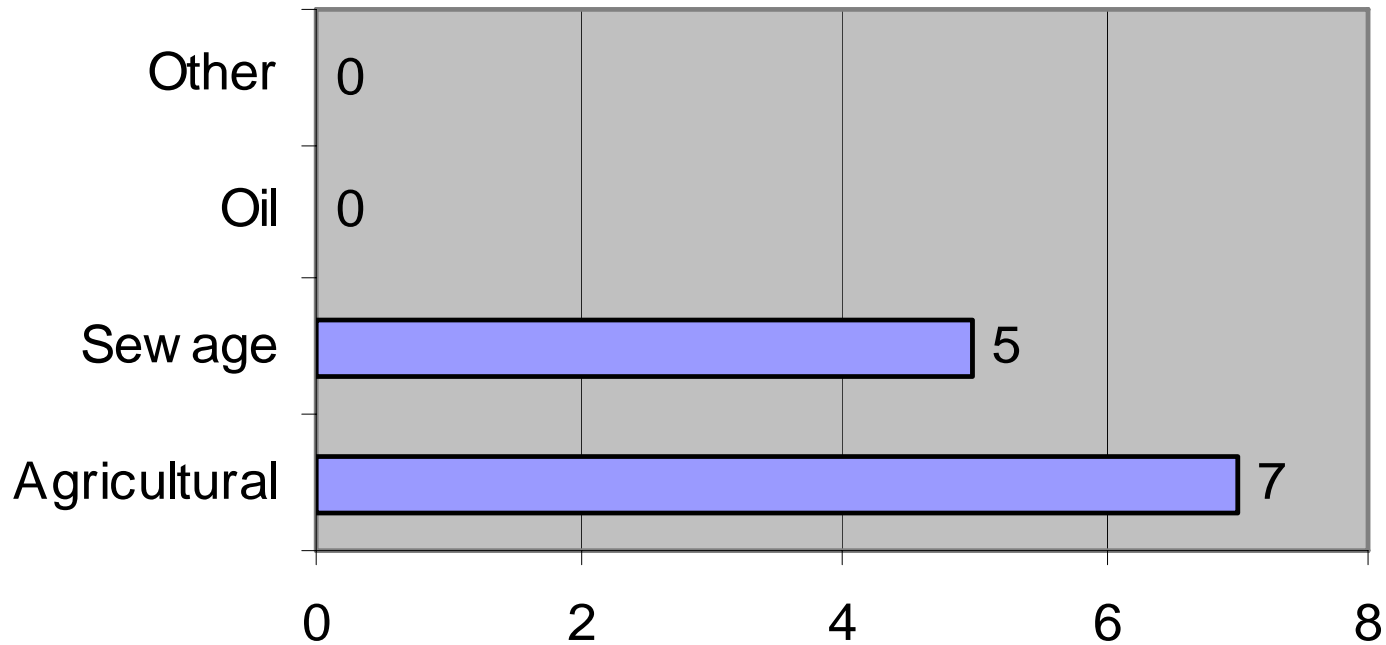
SOURCES OF POLLUTION - Bush And Glens Oct 2010 - April 2011



Pollution Hotline

0800 80 70 60

CATEGORIES OF POLLUTION - Bush and Glens Oct 2010 - April 2011



Pollution Hotline

0800 80 70 60

Incident Severity

- 2x Medium Severity Incidents – Both Agricultural
 - 3 NIWL (Low Sev) :
Sewage-related in Larne, Stranocum (CSO) and
Glendun (Blocked sewer).

All Medium+ Severity Incidents are Cost recoverable where we can identify the polluter – Costs can be many £000s in e.g. a severe oil spill

Pollution Hotline

0800 80 70 60

Recent and Ongoing Enforcement Action

- 4x Prosecution Files sent to HQ for possible court action:
 - 1 Slurry spreading - Glenarm area
 - 1 Silage effluent – Doughery Water
 - 1 Slurry/Dirty water – near Ballycastle
 - 1 Oil spill - Ballycastle
- 1 Warning letter sent to a farmer as a result of problems uncovered in LMA River walking on a tributary of the Walkmill Burn. Checked regularly – no further issues

Pollution Hotline

0800 80 70 60

Types of pollution we deal with: Case of Pollution near Ballycastle





Pollution Hotline

0800 80 70 60



Northern Ireland
Environment
Agency

www.ni-environment.gov.uk

LMA Walking on the Walkmill Burn





Any issues involving other Agencies will be raised with them. CMO also advised.

Pollution Hotline

0800 80 70 60

What's Ahead

- Ongoing training events and exercises for all staff
- Continued programme of Sampling, including the upcoming 2011 Bathing Water season in May
- Proactive visits, Surveys as required
- Continue with LMA River Walking and any subsequent enforcement action – Glens and Rathlin in focus for 2011
- Continued liaison with all stakeholders – CSG Meetings, LMA Work and others

Pollution Hotline

0800 80 70 60



Thanks for your attention

Pollution Hotline

0800 80 70 60

