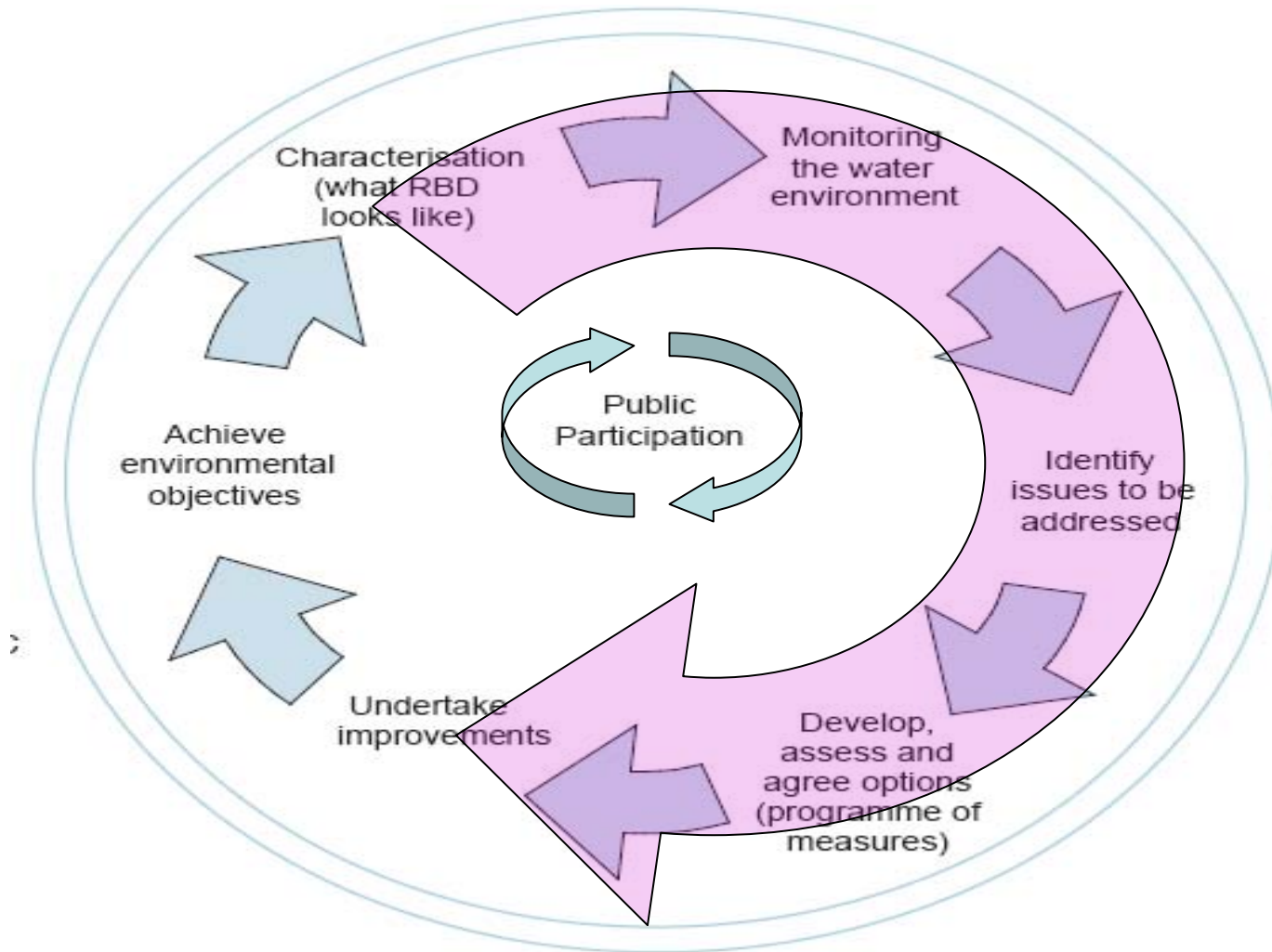


Bush Local Management Area Action Plan

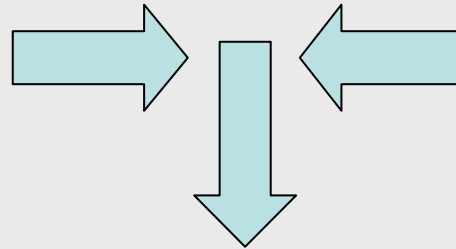
The WFD / River Basin Planning Process



River Basin Management Plan Implementation

Stakeholder Engagement & Participation

- CSG meetings
- Bilateral meetings
- Other plans & programmes
- Gov Departments & Agencies



Investigation and analysis

LMA Action Plan

WFD Objectives

Evidence Base

- Classification data (2007-2009)
- LMA assessment (2010)
- Biological data (2000 – 2010)
- Water body pressure maps
- WFD database
- Stakeholder data
- Gov Departments & Agencies

Development of the Plan

NGOs – Freshwater Task Force, RSPB, WWF, National Trust etc

NI Water

Angling clubs and organisations

Government bodies: NIEA, DARD, DCAL etc

General Public

Local Councils

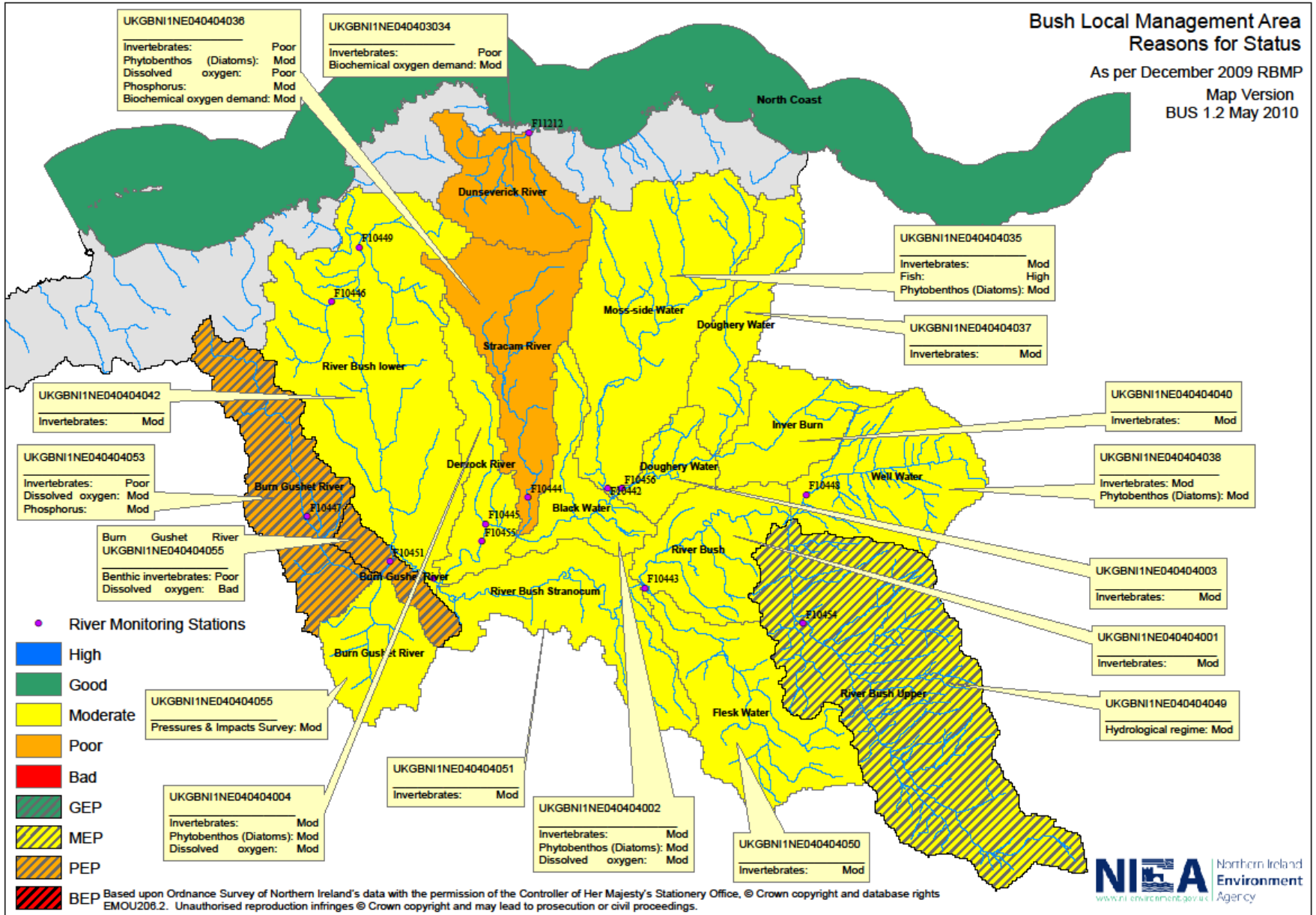
Research bodies, Universities, AFBI etc



Bush Local Management Area Reasons for Status

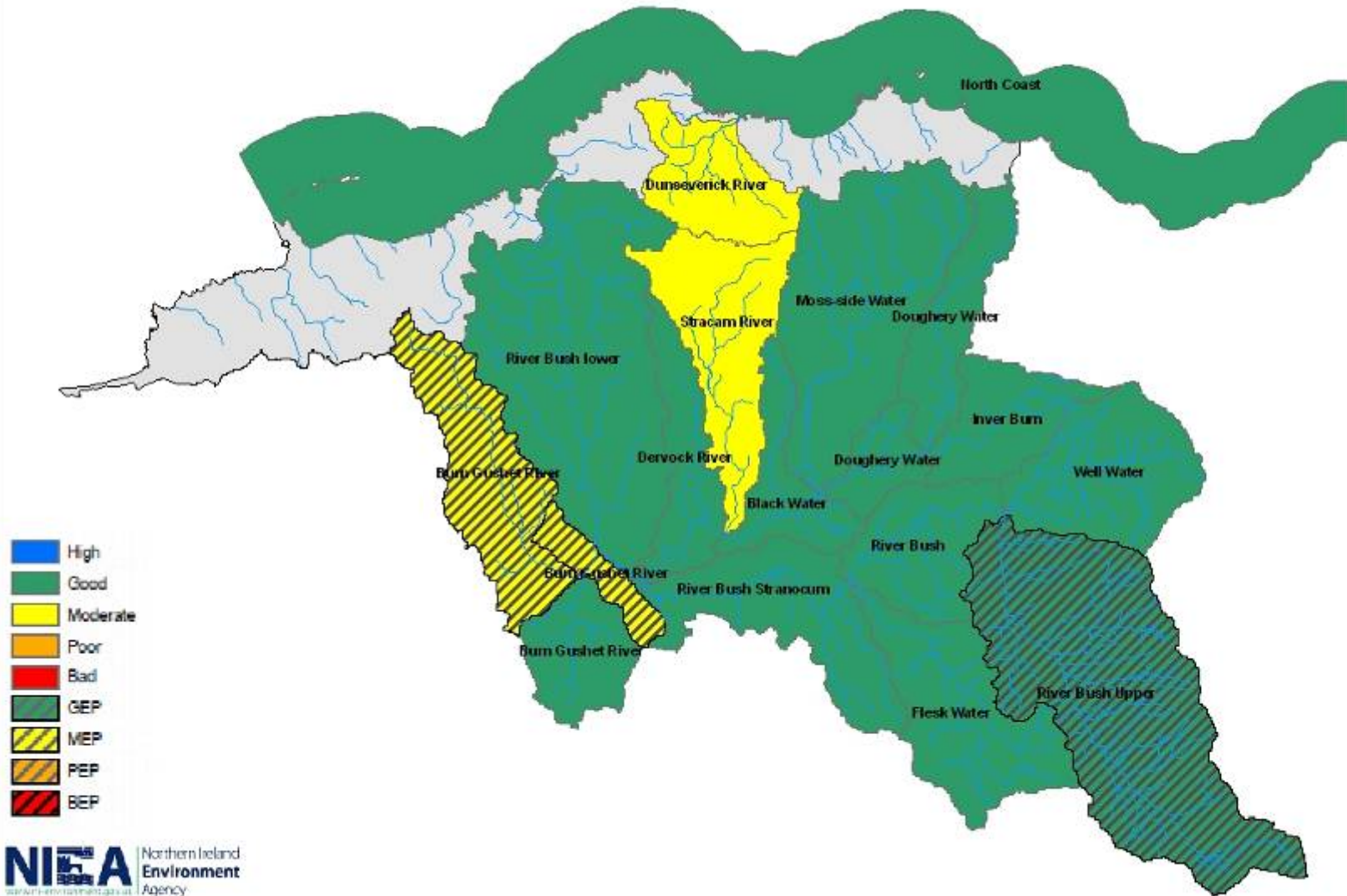
As per December 2009 RBMP

Map Version
BUS 1.2 May 2010



Invertebrates	Dissolved Oxygen	Diatoms	Phosphorus	Morphological Condition	Hydrological Regime
88%	29%	29%	12%	6%	5.6%

Bush Local Management Area - 2015 Objectives



Bush LMA Action Plan

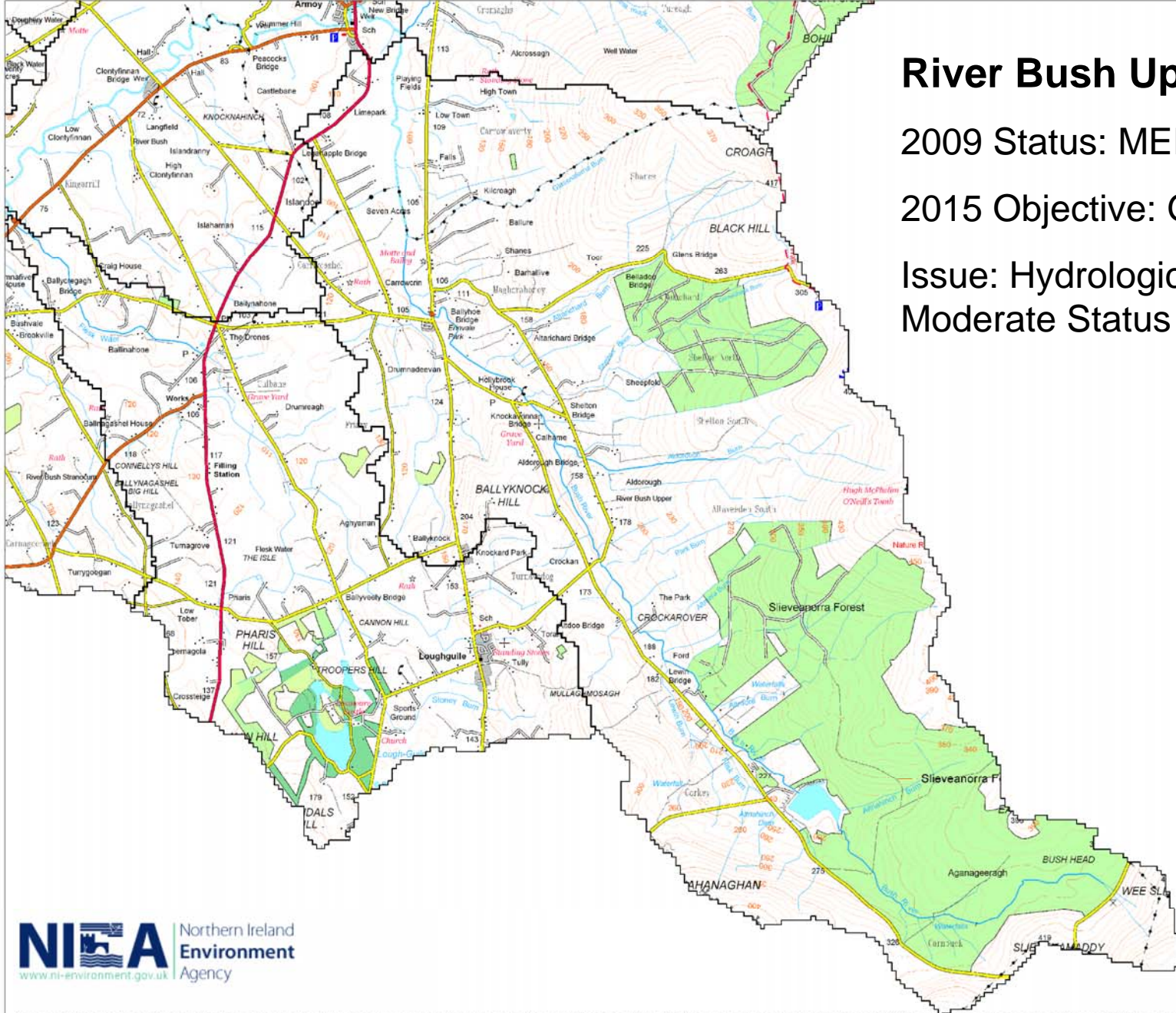
- Tailored to address a range of specific local issues that are impacting the local water environment.
- Focuses on the actions and outcomes.
- Results are coordinated to achieve effective and efficient outcomes.

River Bush Upper

2009 Status: MEP

2015 Objective: GEP

Issue: Hydrological Regime at Moderate Status



River Bush Upper

Action	Lead	Support	Delivery Deadline
Review the compensation flows and sediment management plan for drinking water abstraction at Altnahinch	NIEA	NIW DRD	On-going
Review abstraction licence, monitor actual abstraction and compensation flows	NIEA	NIW DRD	On-going
Evaluate spawning habitat	AFBI	DCAL	On-going - 2013
Evaluate and mitigate against potential impacts due to forestry operations in Slieveanorra Forest	Forest Service	NIEA	On-going



Stracam River

2009 Status: Poor

2015 Objective: Moderate

Issues:

Invertebrates: Poor

Phytobenthos: Moderate

Dissolved Oxygen: Poor

Phosphorus: Moderate

(BOD): Moderate

Stracam River

Action	Lead	Support	Delivery Deadline
Assess sources of organic pollution, including agriculture, wastewater treatment works (Deffrick, Liscolman, Toberkeagh), IPPC sites and septic tanks	NIEA		March 2011
Investigate agricultural practices, analyse frequency/nature of agricultural pollution incidents. Use to target on-farm pollution investigation	NIEA		March 2011
Carry out river walk to determine causes of low biotic scores	NIEA		March 2001

River Bush Lower

Action	Lead	Support	Delivery Deadline
Investigate sheep dip usage	NIEA	DARD	Mar 2011
Determine other sources of diazinon and establish a pollution inventory	NIEA		Mar 2012
Upgrade Bushmills WWTW	NIW		Mar 2013
Carry out river walk on Walk Mill tributary to determine sources of organic pollution	NIEA		Mar 2011
Investigate agricultural practices, analyse frequency/nature of agricultural pollution incidents. Use to target on-farm pollution investigation	NIEA		Mar 2011

Further Actions

1. Government actions

- Agriculture - awareness
- visits

2. Working With Stakeholders

- Signage project

Pollution Hotline Signage

- Raise public awareness
- Improve coverage of incident reporting
- Act as deterrent to polluters



3. Raising Public Awareness

- Publish article in ‘Moyle Matters’

Moyle Matters
Issue 17
Summer 2010

Be a Tourist at Home
Explore the places that make Moyle magic!

Moyle is home to some of the most breathtaking scenery ever known. From the spectacular view, Glens of Antrim to the Giant's Causeway World Heritage site and the Carrick-a-Brede Rope Bridge, from the rugged coastline of Torr Head and Malinbeg Bay to the unspoiled beauty of Rathlin Island, from the quiet charm of sleepy villages such as Bushmills, Ballynahinch and Cushendun to the beauty of Ballycastle. Moyle is famous the world over for its history, its legends and the genuine warmth of its hospitality. Here, we enjoy a world of lush green forests, sweeping glens, rugged seascapes and sleepy villages.

When was the last time you visited Ballycastle Museum? An somewhere local? Bought a unique gift locally rather than from a national chain? Visited an historical site that truly makes Moyle unique? Often the only time we venture into such venues is when we have visitors. It is important that residents of Moyle remind themselves what makes this place so special. So this summer 'be a tourist at home'. Visit the best places to eat, shop in local gift shops for that something special and visit our many quirky historic sites.

Why not take the kids to Rathlin Island and let them enjoy nature at its best with a visit to the puffins or the Bird Sanctuary and a walk to see the seals? You could also take them to the world famous Giant's Causeway and let them hear the story of our very own mythical giant, Finn McCool. Or even, pack a picnic and have fun exploring Ballypanick Forest.

There's so much to see and do, so contact Ballycastle Tourist Information Centre on 3076 2024 or Cushendun Local Information Office 3177 1180 for more information or visit www.moylecouncil.org

Giant's Causeway Visitor Centre

A reception was hosted by the Chairperson, Councillor Cara McShane for the staff from the Giant's Causeway Visitor Centre. Councillor McShane wanted to mark Council's appreciation for the staff's dedicated service, as they transfer to become National Trust employees.

Cllr Cara McShane stated "On behalf of Moyle District Council, I wish to recognise the hard work and dedication shown by the staff from the Visitor Centre. The many months over the years is testament to this. I would like to take this opportunity to thank the staff and to extend my good wishes to them for the future".

The Giant's Causeway Visitor Centre officially transferred to the National Trust in April this year.

Staff of the Giant's Causeway Visitor Centre joined with representatives from National Trust

4. Commenting on the Action Plans

- Plans will be available on the website.
- Comments can be emailed via the website.

NIEA National Rivers and Waterways Agency

Exploring the Water Framework Directive 2000-2015

RIVER BASIN MANAGEMENT PLANS
"WATER IS NOT A COMMERCE, BUT A RESOURCE WHICH MUST BE PROTECTED, ENHANCED AND TRUSTED AS SUCH"

Navigation: Home, About NIEA, Publications, Funding, Press & Media, Contact Us, Site Map, Other websites

Business & Industry, Transport & Logistics, Recreational & Conservation

E - Newsletter



LMA Community Project Award Scheme

- £1000 award for the project which works to:
 - ❖ Encourage interest in protecting the water environment
 - ❖ Promote community involvement in caring for and enjoying our waterways.

2011



2011

**Glens & Rathlin
Local
Management
Area**



Robert Thompson Copyright

Our aim is to protect, conserve
and promote our natural and built
environment for the benefit of
present and future generations.

