

COASTAL DEFENCES

Roles and Responsibilities

The Bateman Formula

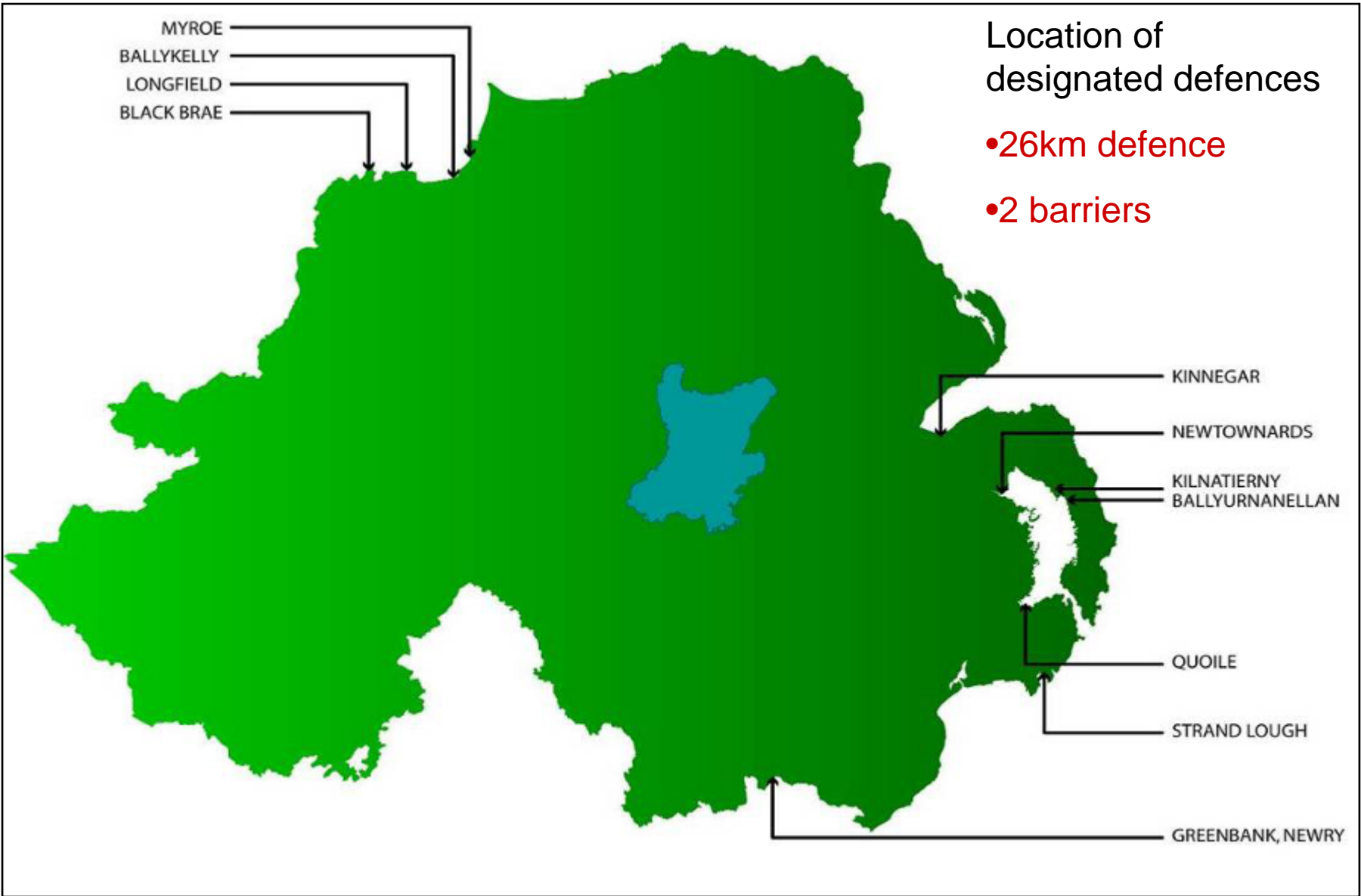
- Harbours – NI Harbour Commissioners /local councils
- Roads - Roads Service
- Designated Sea Defences – Rivers Agency

MYROE
BALLYKELLY
LONGFIELD
BLACK BRAE

Location of designated defences

- 26km defence
- 2 barriers

KINNEGAR
NEWTOWNARDS
KILNATIERNY
BALLYURNANELLAN
QUOILE
STRAND LOUGH
GREENBANK, NEWRY





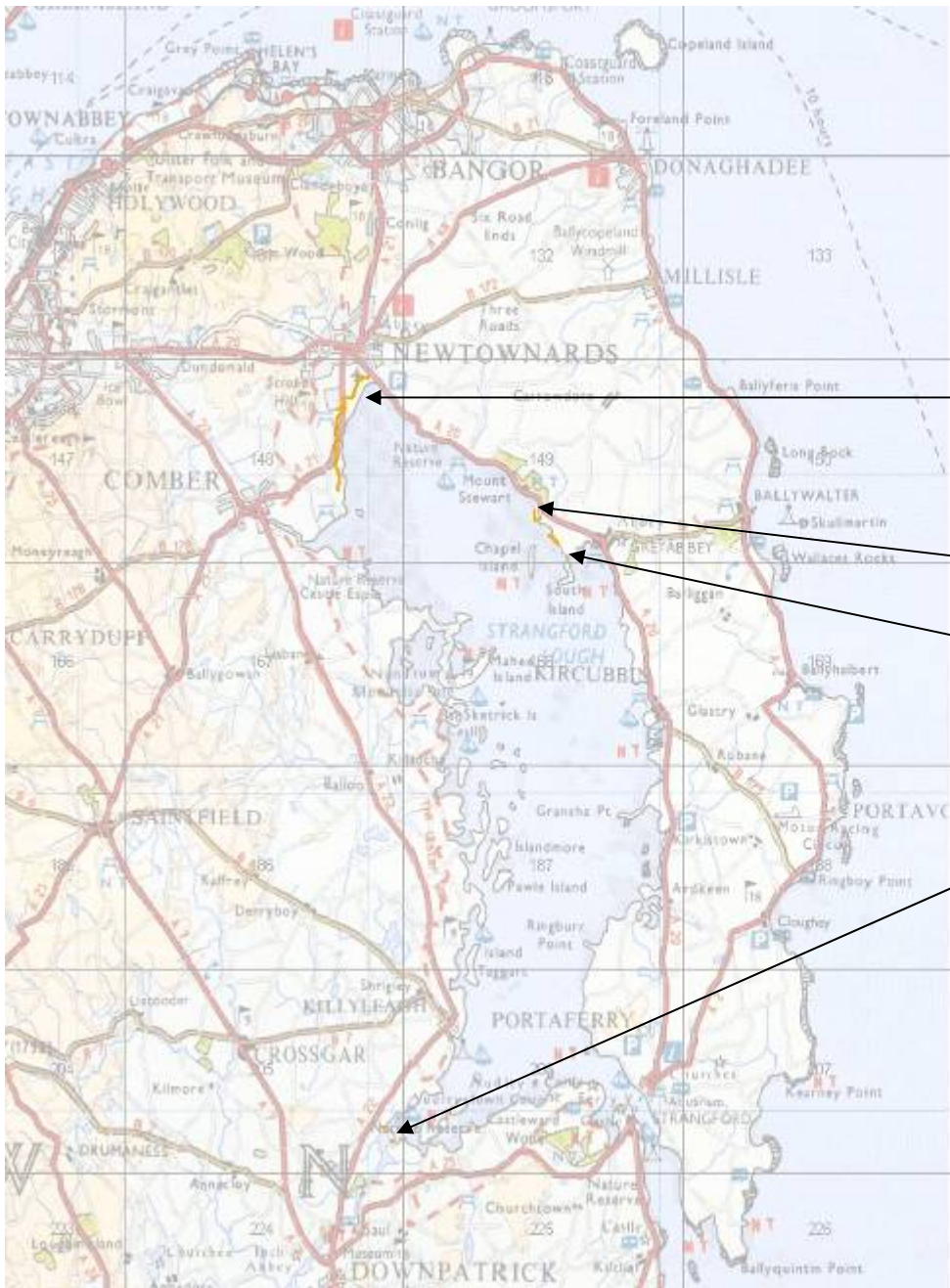
Myroe Sea Defence



Foyle Sea Defences

Typical Armour Stone Placement





**Sea Defences –
Strangford Lough**

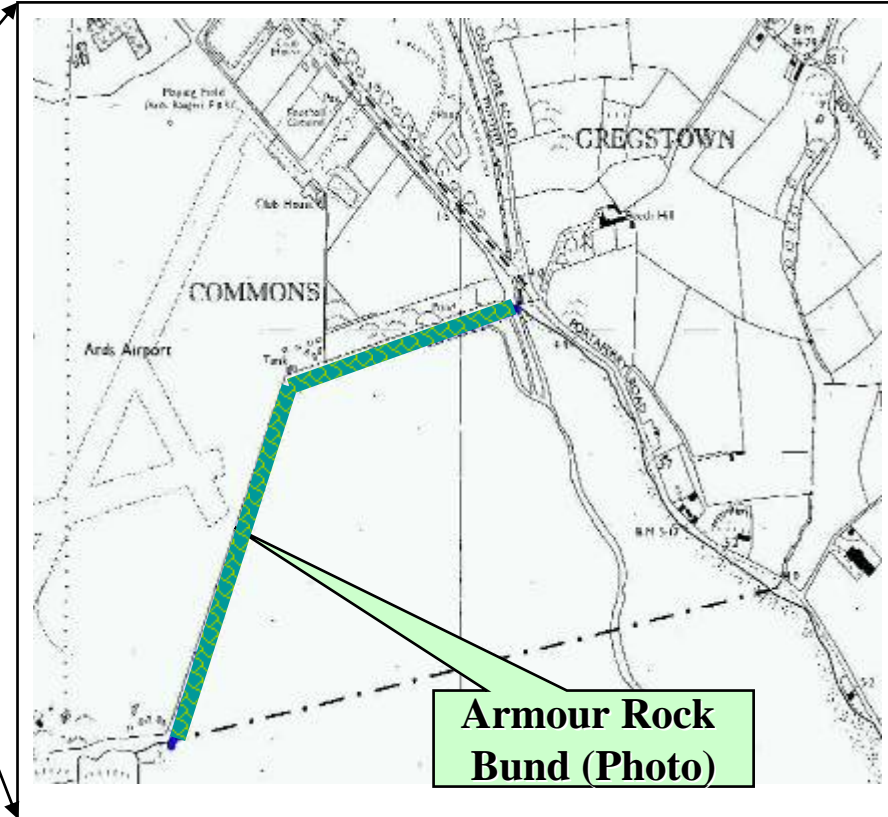
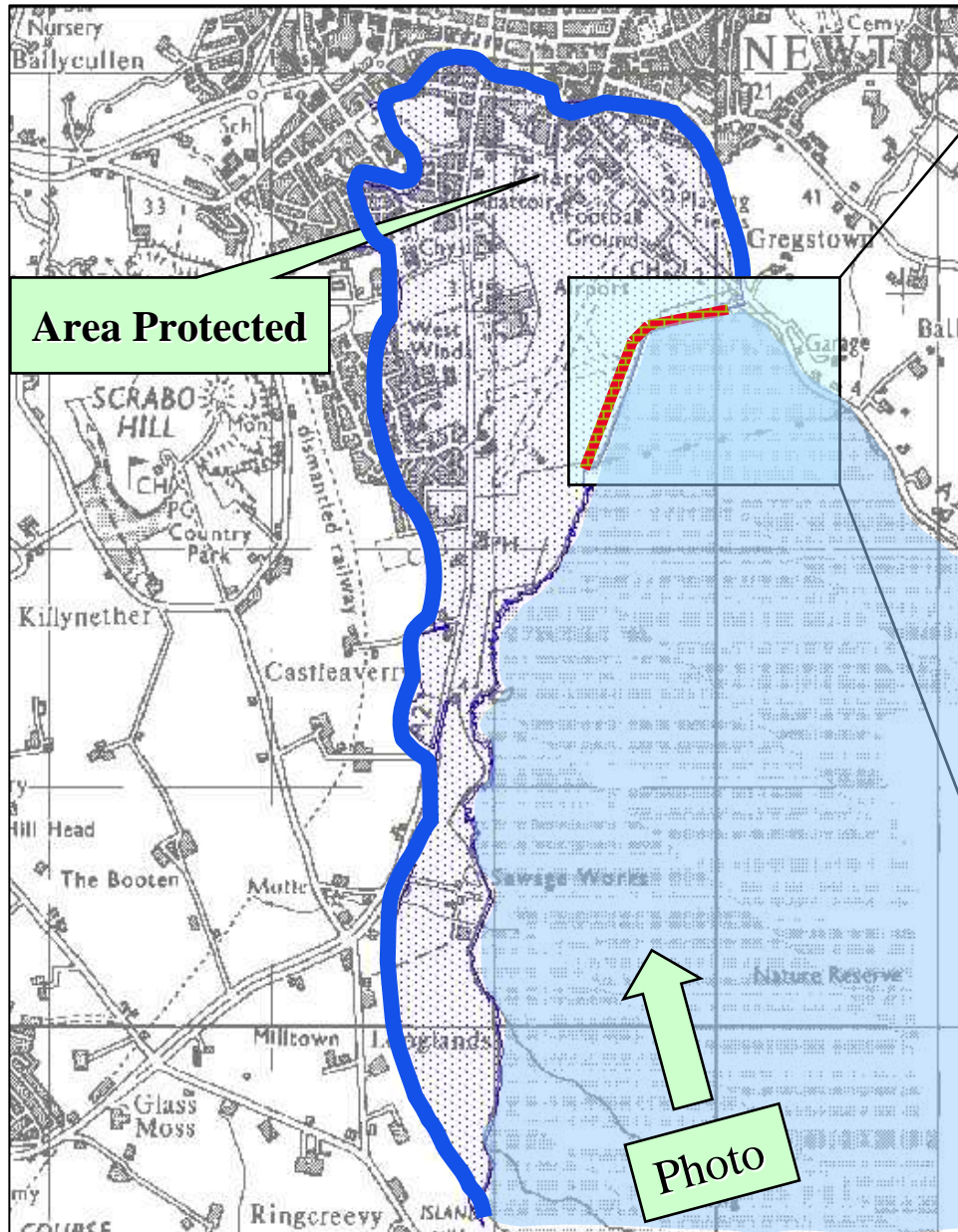
Ards Comber Dyke

Kilnatieerney

Ballurnanellan

Quoile barrage and
causeway

Strangford Sea Defences - Area Protected (Armour Stone Defence location)



Property Protected by Newtownards Sea Defences



Newtownards

Ards Air strip

Comber Road

Sea Defence

Sewage Treatment Works

Strangford Sea Defence



Sea Defences - barrages



Strand Lough Barrage

Quoile Barrier





Brick Works

242

Flaps

Other Controls:

1. Food and Environmental Protection Act 1985

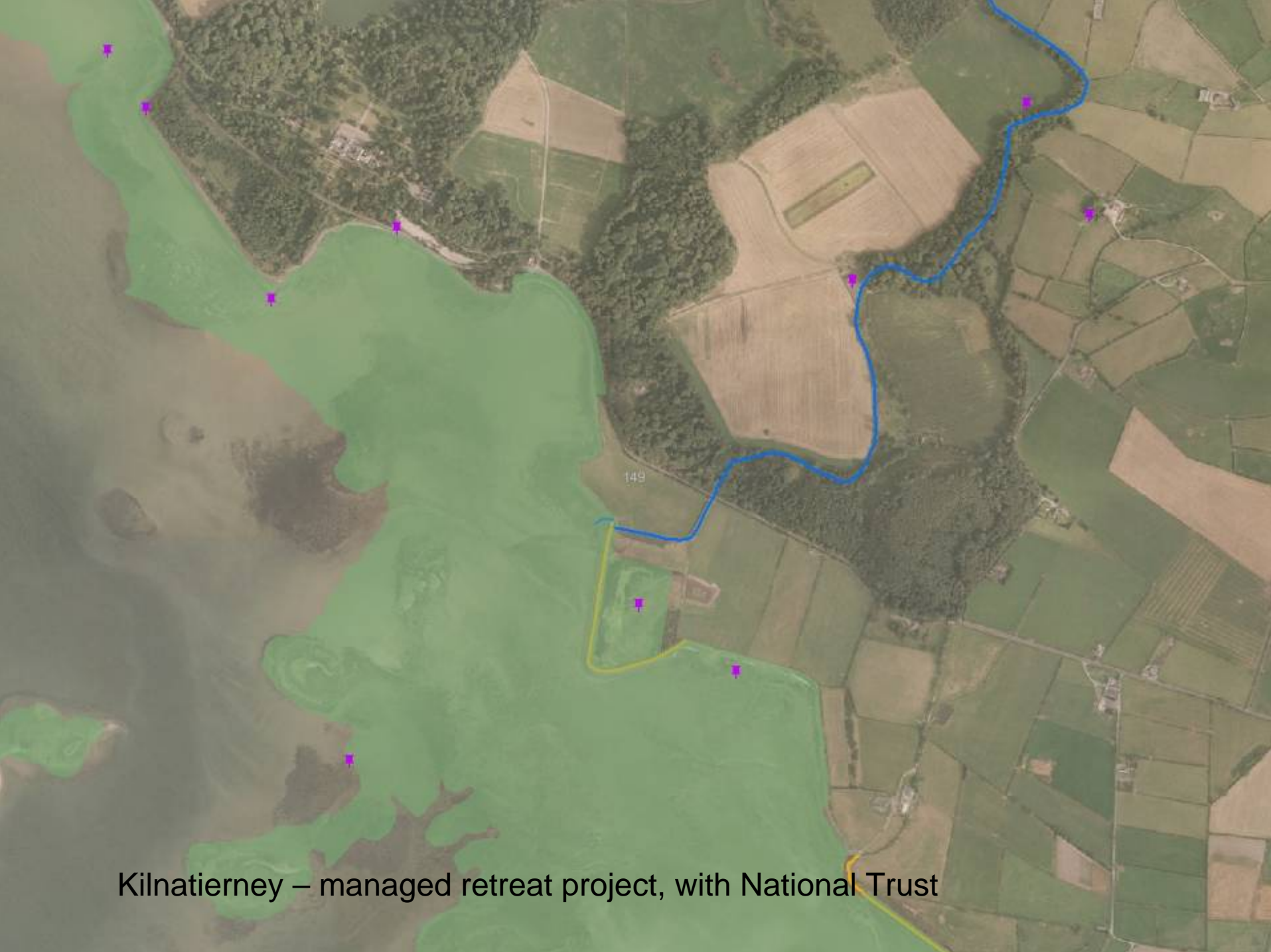
- Part II covers control of deposits into sea up to the High Water Mean Spring tidemark.
- Department of the Environment (Water Management Unit) is the controlling body.
- Covers activities including construction works such as jetties, harbours, hard and soft sea defence options.

2. NIEA Conservation Designations (ASSI and Natura 2000)

- Consent/assent required for ASSIs.
- Article 6 Test of Significance (minimum) for Natura 2000s.







Kilnatieerney – managed retreat project, with National Trust



09/07/2009



15/07/2009



17/07/2009



25/07/2009