

Erne Melvin Catchment Stakeholders Meeting 13th May 2009

Michael Spillane

Water Quality Inspector

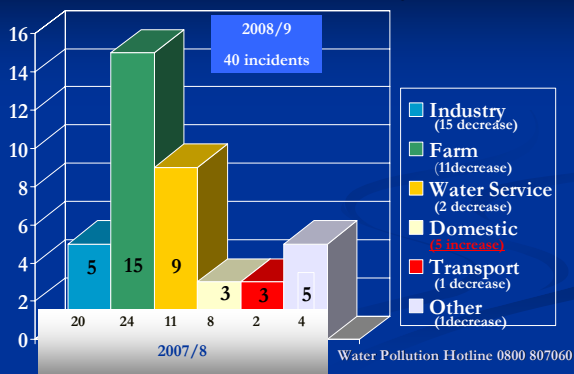
Water Pollution Hotline 0800 807060

Pollution Incidents Investigated 1st October 2008 to 13th May 2009

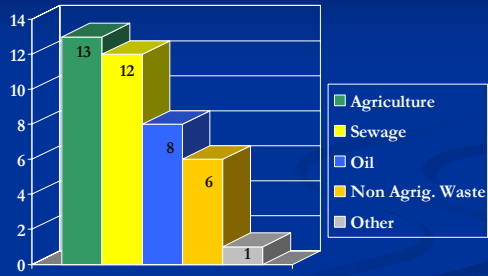
- 72 Investigated 112 Same period previous year
- 40 confirmed as pollution 69 Same period previous year
- 13 incidents:(32.5%) detected by NIEA Field Staff
 - 0 High Severity
 - 2 Medium Severity
 - 38 Low Severity

Water Pollution Hotline 0800 807060

Pollution Incidents by Source



Pollution Incidents by Category

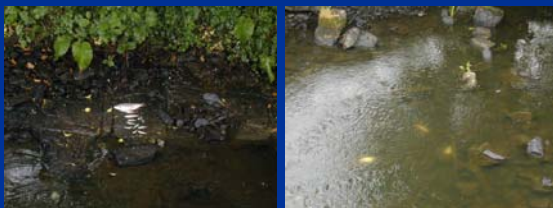


Water Pollution Hotline 0800 807060

Over application of slurry



Fish Kill due to Silage Effluent



Pumping Station Overflow



Water Pollution Hotline 0800 807060

Poorly maintained septic tank



Oil pollution due to fire



How not to store oil



Other sources of pollution

- Quarries
- Road Traffic Accidents (Transport)
- Domestic (oil and sewage)
- Non Agricultural waste.



Enforcement October 1st – May 13th

- Statutory samples – 3 taken.
- 6 warning letters issued
- 8 breaches of SMR 5 (Nitrate Pollution)
- 1 Court case heard (£5000 fine)



Water Pollution Hotline 0800 807060

Scheduled Work

1st October 2008 to 13th May 2009

- 212 Domestic Consent applications
- 173 Industrial Effluent Samples
- WWTW Inspections ongoing
- 30 Cross Compliance Visits
- 776 Surface Water Samples

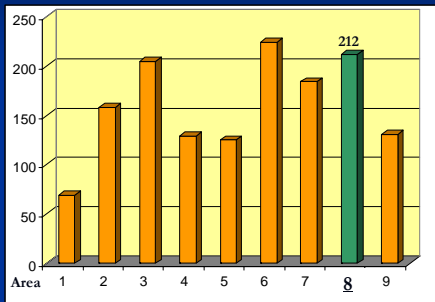
Water Pollution Hotline 0800 807060

Inspect WWTWs

To the largest



Domestic Consent Applications



Water Pollution Hotline 0800 807060

Targeted catchments

- Bannagh River
- Finn River
- Moher River

Field staff will be surveying catchments that have been targeted based on previous monitoring results and reported pollution incidents.

Current Issues

Mill Lough Bellanaleck

Algal Bloom



nc 0800 807060

Thank You

Water Pollution Hotline

0800 80 70 60



END
