

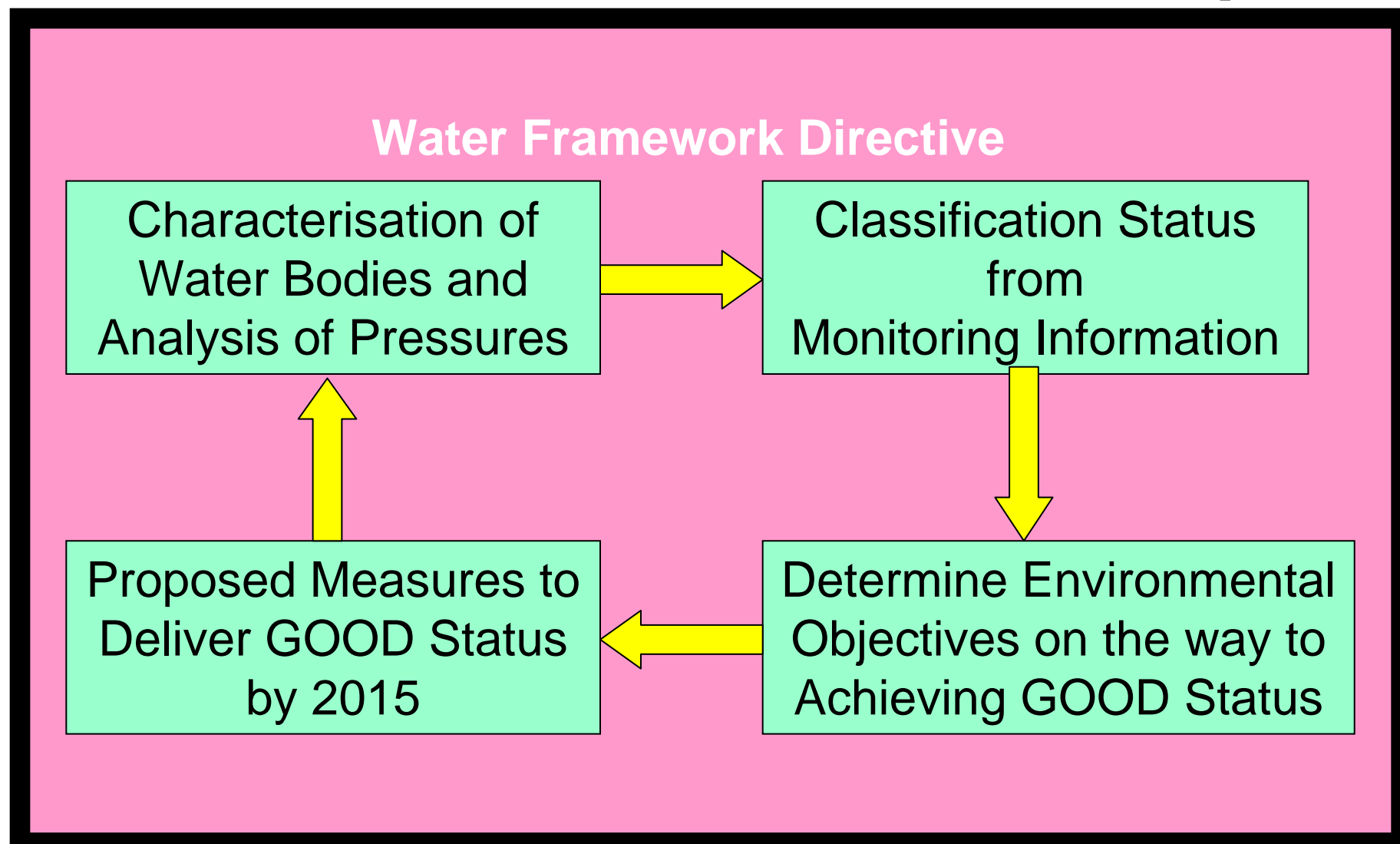
# Draft River Basin Plans – Erne & Melvin

Gabriel Nelson – NIEA

# Introduction

- Background of the overall process and how it fits into the logic of the Directive
- Classification Results for the Erne & Melvin
- What is likely to appear in the draft plans
- What is the time line for the plans
- How people should become involved
- What will happen between the draft and final plans

# Water Framework Directive Steps



# What is a RBMP ?



The plans cover:

groundwater

wetlands

rivers

lochs/lakes/loughs

transitional waters (eg estuaries)

coastal waters

Set out the objectives to be achieved  
and the actions required.

River Basin Districts

# Draft River Basin Management Plans

- 1 Northern Ireland only draft plan
- 3 shared plans with NI & RoI – North Western Neagh Bann and Shannon IRBDs
- Tiered approach – combination of published summary document and technical appendices available on-line
- Will include information on classification status results, objectives and measures

# Draft River Basin Management Plans

- Tier 1- NI/RoI Coordination/Summary Statistics for IRBD
- Tier 2 – Summary of draft River Basin Management Plans
- Tier 3- interactive web map
- Tier 4 – background documents

NIEA Map Viewer

File Edit View Favorites Tools Help

Google G- Go - Bookmarks - 3 blocked - Check - AutoLink - AutoFill - Send to - Settings -

NIEA Map Viewer

**NIEA** Northern Ireland Environment Agency  
www.ni-environment.gov.uk

**DOE** An Agency within

Comments - Terms and Conditions

Quick Start Guide

Map View

Surface Water Data

Groundwater data

Done

Internet 100%

start | Inbox - Microsoft ... | NIEA Map Viewer ... | 15:19

NIEA Map Viewer

File Edit View Favorites Tools Help

Google Chrome

NIEA Northern Ireland Environment Agency

DOE An Agency within

Comments - Terms and Conditions

Quick Start Guide

Map View

Surface Water Data

Groundwater data

High

Good

Moderate

Poor

Bad

20 10 0 20 Kilometers

Done

Internet 100%

start Inbox - Microsoft ... NIEA Map Viewer ...

NIEA Map Viewer

File Edit View Favorites Tools Help

Google Chrome

NIEA Map Viewer

NIEA Northern Ireland Environment Agency

DOE An Agency within

Comments Terms and Conditions

Quick Start Guide

Map View

Surface Water Data

Waterbody name:  
Ballycassidy River Upper

Classification:  
Poor

2015 target classification: Moderate  
2021 target classification: Good  
2027 target classification: Good  
Risk: 1a

Groundwater data

Done

Internet 100%

start | Inbail - Microsoft ... | NIEA Map Viewer ...

NIEA Map Viewer

File Edit View Favorites Tools Help

Google  Go  Bookmarks 3 blocked Check AutoLink AutoFill Send to Settings

NIEA Map Viewer

**NIEA** Northern Ireland Environment Agency  
www.ni-environment.gov.uk

An Agency within **DOE**

Comments - Terms and Conditions

Quick Start Guide

Map View

Surface Water Data

Groundwater data

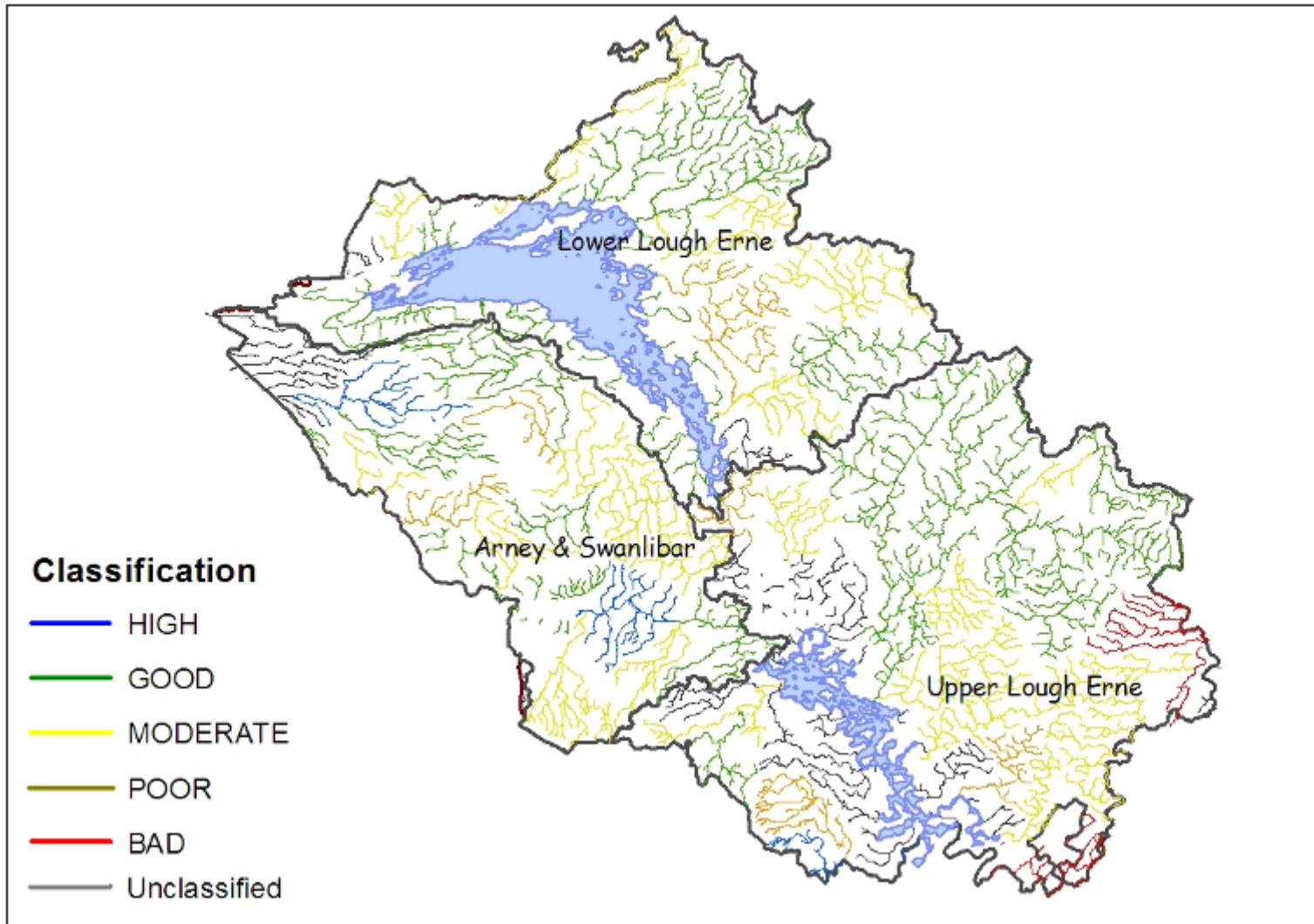
Done Internet 100%

start Inbox - Microsoft ... NIEA Map Viewer ... 15:19

# Status Classification for Erne/Melvin

- Rivers
- Lakes
- Groundwaters

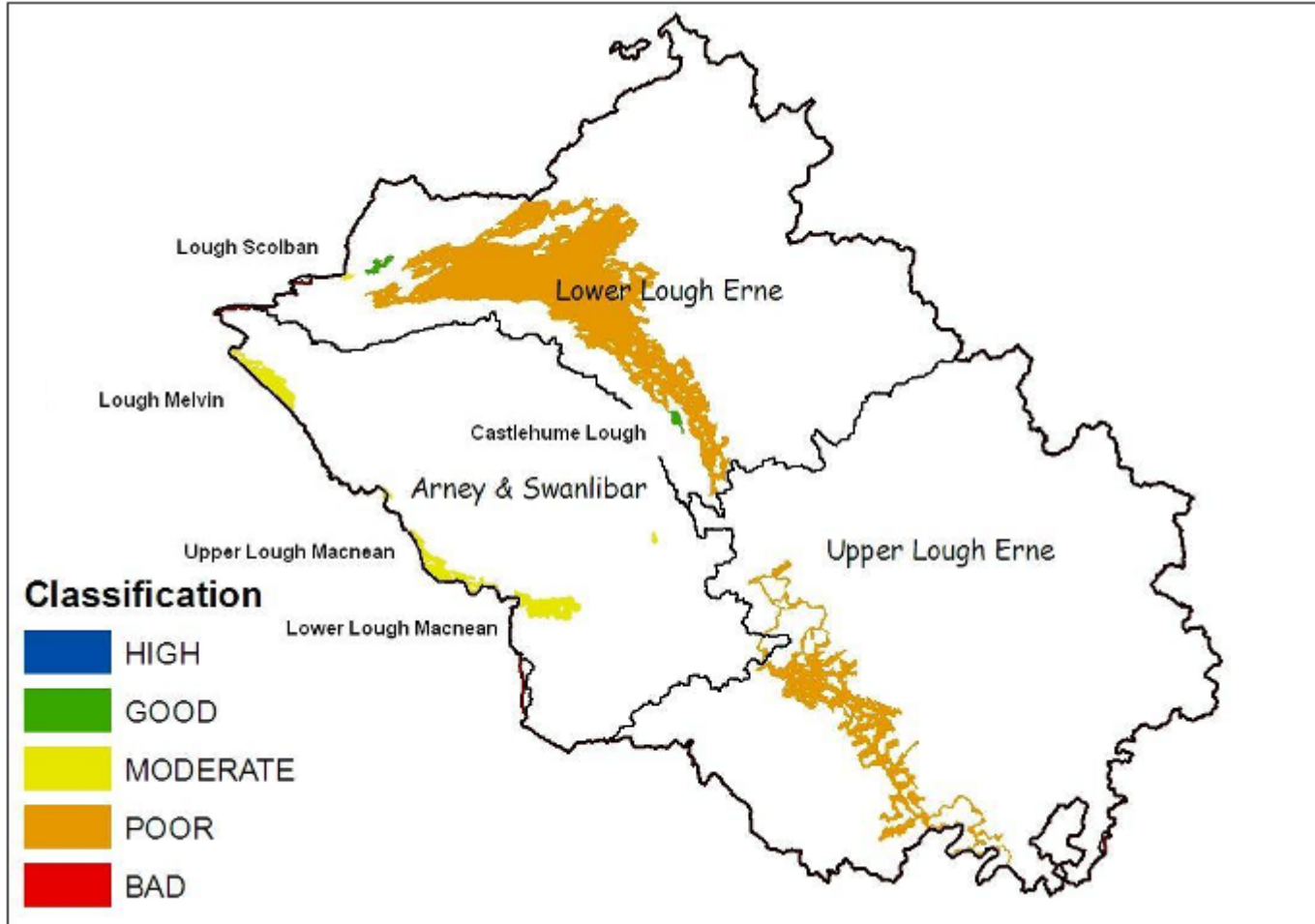
# Summary of River Water Body Status



# Summary of River Water Body Status

River Status as % of Total River Length for 81 WBs							
Management Area	High	Good	Moderate	Poor	Bad	Not Yet Assessed	% Total
Lower Lough Erne		58	28	10		4	100
Upper Lough Erne	2	35	27	7	8	21	100
Arney & Swanlinbar	15	39	38	8	-	-	100

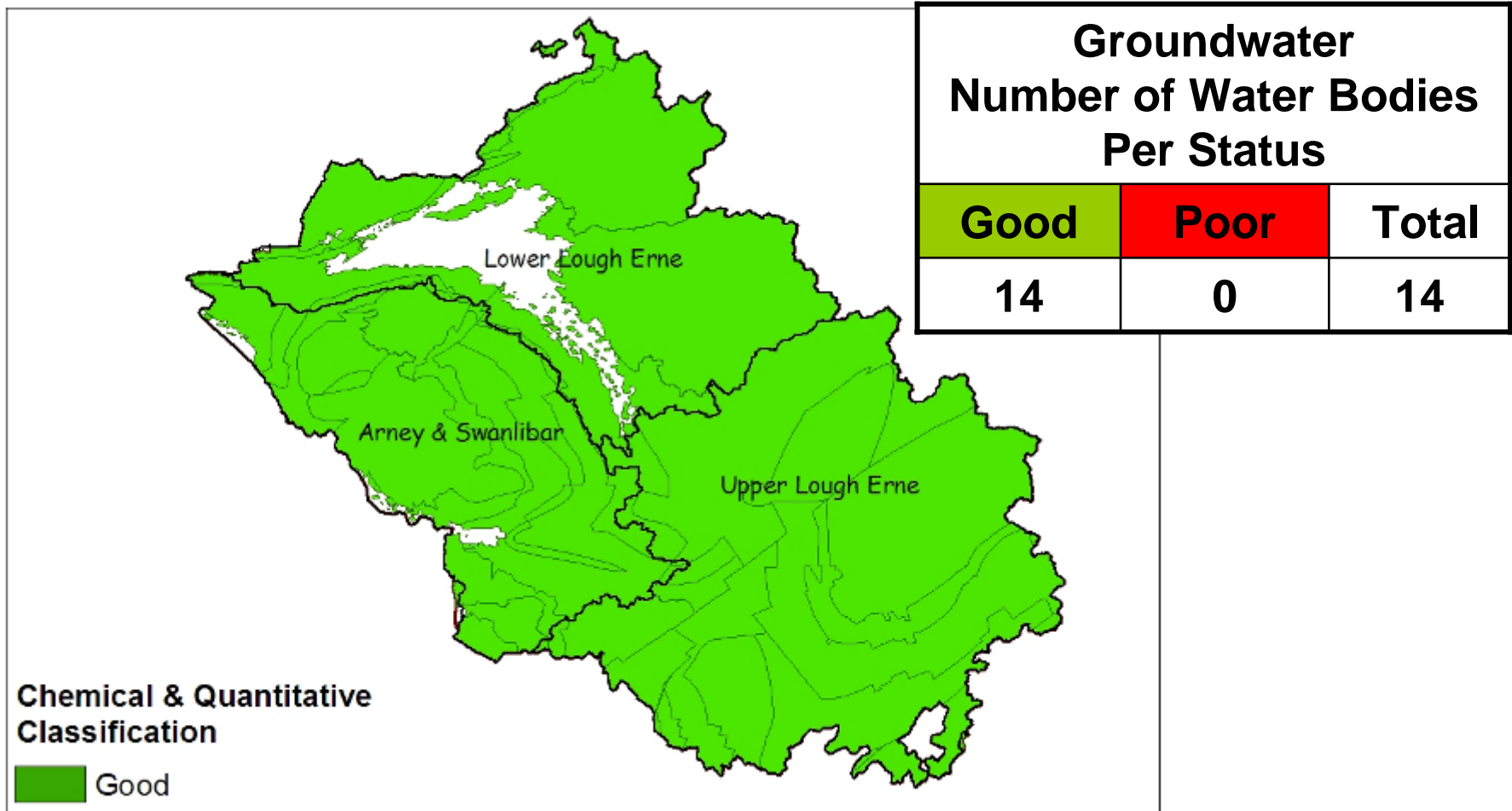
# Summary Lake Water Body Status for Erne/Melvin



# Summary Lake Water Bodies (8) Status for Erne/Melvin as % of Area

Management Area	Lake	High	Good	Moderate	Poor	Bad
Lower Lough Erne	Lower Lough Erne			69.5		
	Lough Scolban		0.5			
	Castlehume Lough		0.5			
Upper Lough Erne	Upper Lough Erne			21.0		
Arney and Swanlinbar	Lough Melvin (Central)			2.0		
	Lough Melvin (East)			1.0		
	Lower Lough MacNea			3.0		
	Upper Lough MacNea			2.5		

# Groundwater Status for Erne/Melvin



# Overall status classification for Erne/Melvin as a % of Total Number of Water Bodies (103)

- % good or better                      **50.5**
  
- % not good                                      **49.5**

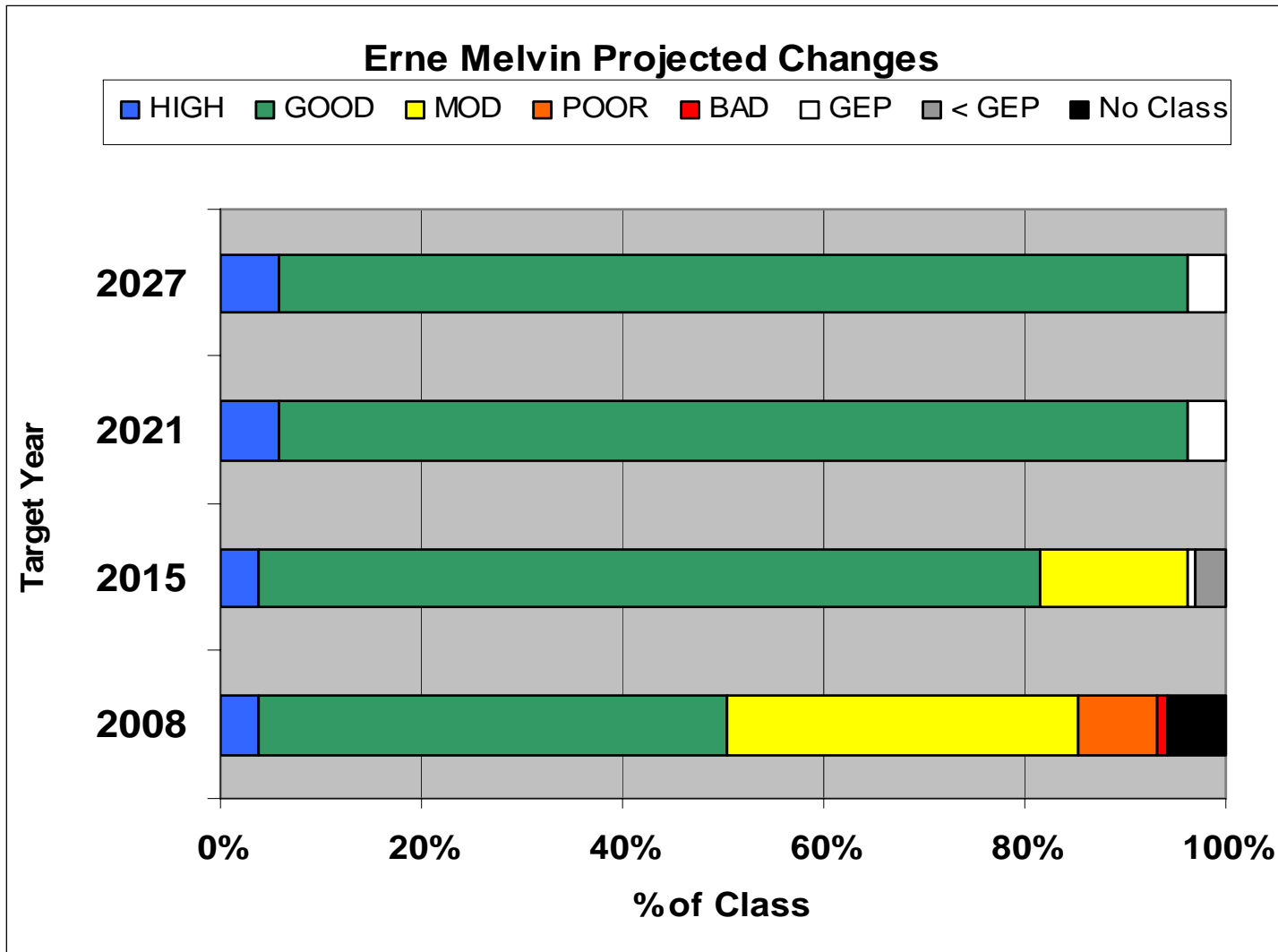
# Rules for Prioritising Provisional Objective Setting

- Rule 1: Where a water body is at **moderate** status in **2008** the provisional objective for **2015** is **good** status.
- Rule 2: Where a water body is at **poor** status in **2008** the provisional objective for **2015** is **moderate** status and the provisional objective for **2021** is **good** status.
- Rule 3: Where a water body is at **bad** status in **2008**, the provisional objective for **2015** is moderate status and the provisional objective for **2021** is **good** status

# SUMMARY OF OBJECTIVES FOR ERNE MELVIN as % of ALL WBs

STATUS	2008	2015	2021	2027
High	4.0	4.0	6.0	6.0
Good	46.5	77.5	90.0	90.0
Moderate	34.5	14.5	0.0	0.0
Poor	8.0	0.0	0.0	0.0
Bad	1.0	0.0	0.0	0.0
GEP	0.0	1.0	4.0	4.0
Less than GEP	0.0	3.0	0.0	0.0
Unclassified	6.0	0.0	0.0	0.0
Totals	100%	100%	100%	100%

# Objectives for Erne/Melvin

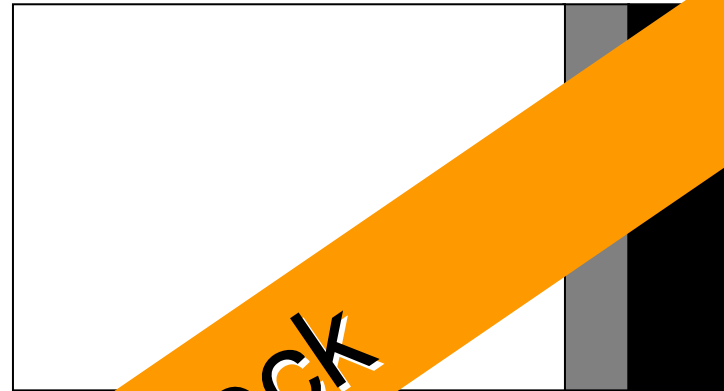


---

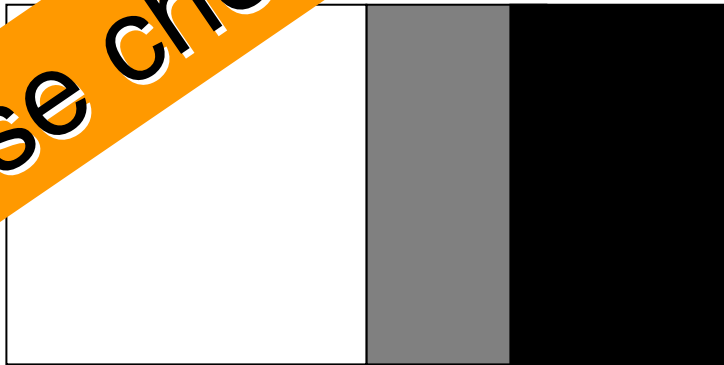
# Programme of Measures

# Break down the problem

Water quality



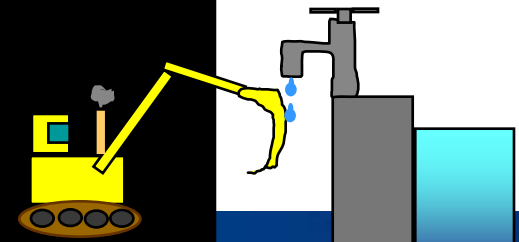
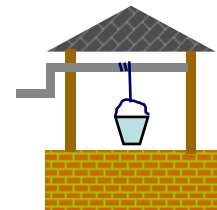
Water resources



Biological



Sense check



Work out what improvements will be delivered by existing measures – before spending time on exemptions

# Process of filling the gap between current status and target status for each pressure/status component

- Target Status

Measures that may happen as a result of the River Basin District Planning process

Measures and trends that will happen

- Current Status

**Pre-WFD national and EU  
measures**

**UWWTD; Habitats Directive;  
CAP; etc**

**Existing local initiatives**

**Fisheries management projects;  
etc**

# Planning Assumptions

- Point Source Pollution
- Diffuse Source Pollution
- Chemical pollution
- Water resources
- Physical modifications

# Programme of Measures

Two scenarios for measures:

- actions funded/legislation in place and timetabled – 2008/11 – Programme for Government
- actions not funded/new legislation – 2011/14 – Programme for Government

# Types of Measures

- Point Source – 2007 – 2010 NIW Capital Investment Programme
- 2010 -2012 and 2012 – 2017 Capital Investment Programme
- Review polluting impact of septic tanks and develop best practice guidance

# Types of Measures

- Low/zero phosphorus (P) detergents
- Improved education and awareness campaigns
- Targeted advisory visits and inspections
- Develop Catchment models
- Further investigate sources and options for further removal of P from point discharges and diffuse sources

# Types of Measures

- Working with Sector Groups to develop and promote Good Practice Guidance
- Promotion and adoption of Sustainable Urban Drainage Systems
- Installation of fish passes/river restoration programme

# Timeline

<b>Dec 2008</b>	<b>Publish draft RBMP for 6 month consultation</b>
<b>Dec 2009</b>	<b>Publish 1<sup>st</sup> RBMP</b>
<b>Dec 2010</b>	<b>Pricing policies for cost recovery of water services</b>
<b>Dec 2012</b>	<b>Programme of measures operational</b>
<b>Dec 2013</b>	<b>Prepare for 2<sup>nd</sup> RBMP</b>
<b>Dec 2015</b>	<b>Achieve Environmental Objectives – 1<sup>st</sup> RBMP</b>

# HOW TO GET INVOLVED

- In Northern Ireland – Stakeholder Forum/ 9 Catchment Stakeholder Groups
- News paper adverts and wide distribution of Tier 2 hardcopy
- Web – [www.ni-environment.gov.uk/wfd](http://www.ni-environment.gov.uk/wfd)
- Launch in Jan 09
- Next round of CSG meetings - proposed series of information days– Feb/Mar 09

# From Draft to Final

- Public consultation on draft plans – December 2008 to June 2009
- Status classification results updated – new tools still under development and trialling
- Objectives updated
- Consultation responses considered
- Programmes of measures:
  - some better targeted
  - scenarios confirmed

Our aim is to protect, conserve  
and promote our natural and built  
environment for the benefit of  
present and future generations.

