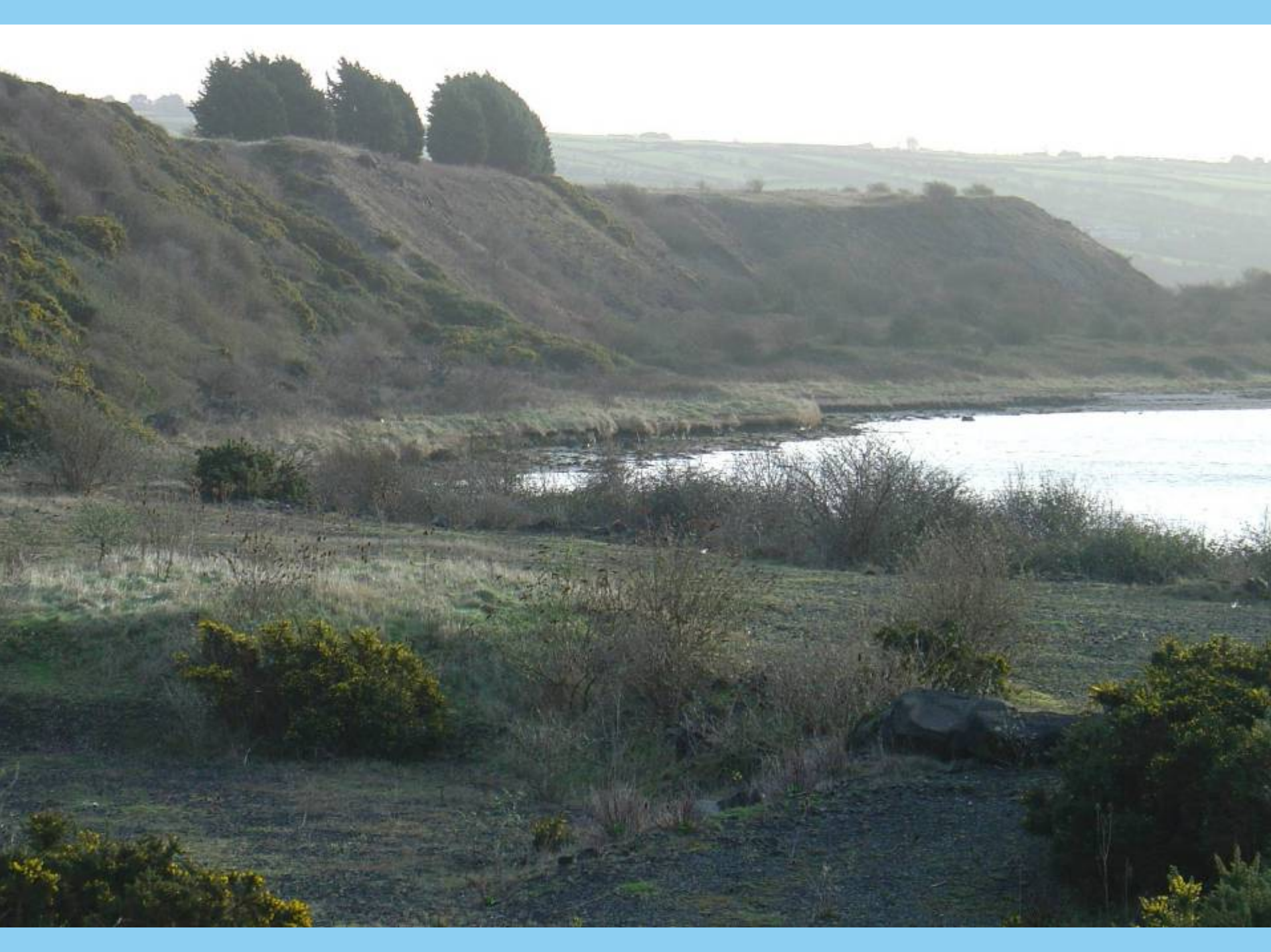


ENVIRONMENTAL MANAGEMENT OF LARNE LOUGH  
**MAGHERAMORNE UPDATE**

17 February 2010













'GREEN' HARBOUR VILLAGE

FILM STUDIOS

BIRDWATCHING TOWER  
AND FIELD CENTRE



INDUSTRIAL  
ARCHAEOLOGY  
PARK

HERITAGE RAILWAY AND  
VISITORS CENTRE

WORLD CYCLING CENTRE

ALL-IRELAND DIVING CENTRE

## Ten Guiding Principles of One Planet Living



# A SENSITIVE APPROACH TO THE LOUGH

- Master Plan – no physical intrusions into the lough
- Consultation – including discussion with shellfish farmers
- Construction Plan – including measures to avoid discharges into the lough
- Environmental Management Plan, including Ecological Plan, for each phase
- Event Management Plan – including speedy removal of waste to discourage gulls
- Harbour Management Plan – including control on speeds and mooring arrangements
- Blue Circle Island – working with RSPB on remediation and providing bird boxes

# CONDITION NO.42: SEWAGE TREATEMENT

“The buildings associated with this planning application shall not be occupied unless the necessary sewage infrastructure is in place to transfer foul sewage to a Northern Ireland Water Limited (NIW) sewer in an appropriate manner or a private wastewater treatment facility consented by NIEA.”

