

# Bush and Glens Catchment Stakeholder Meeting

*18th November 2011*

Update on our Work  
Since April 2011

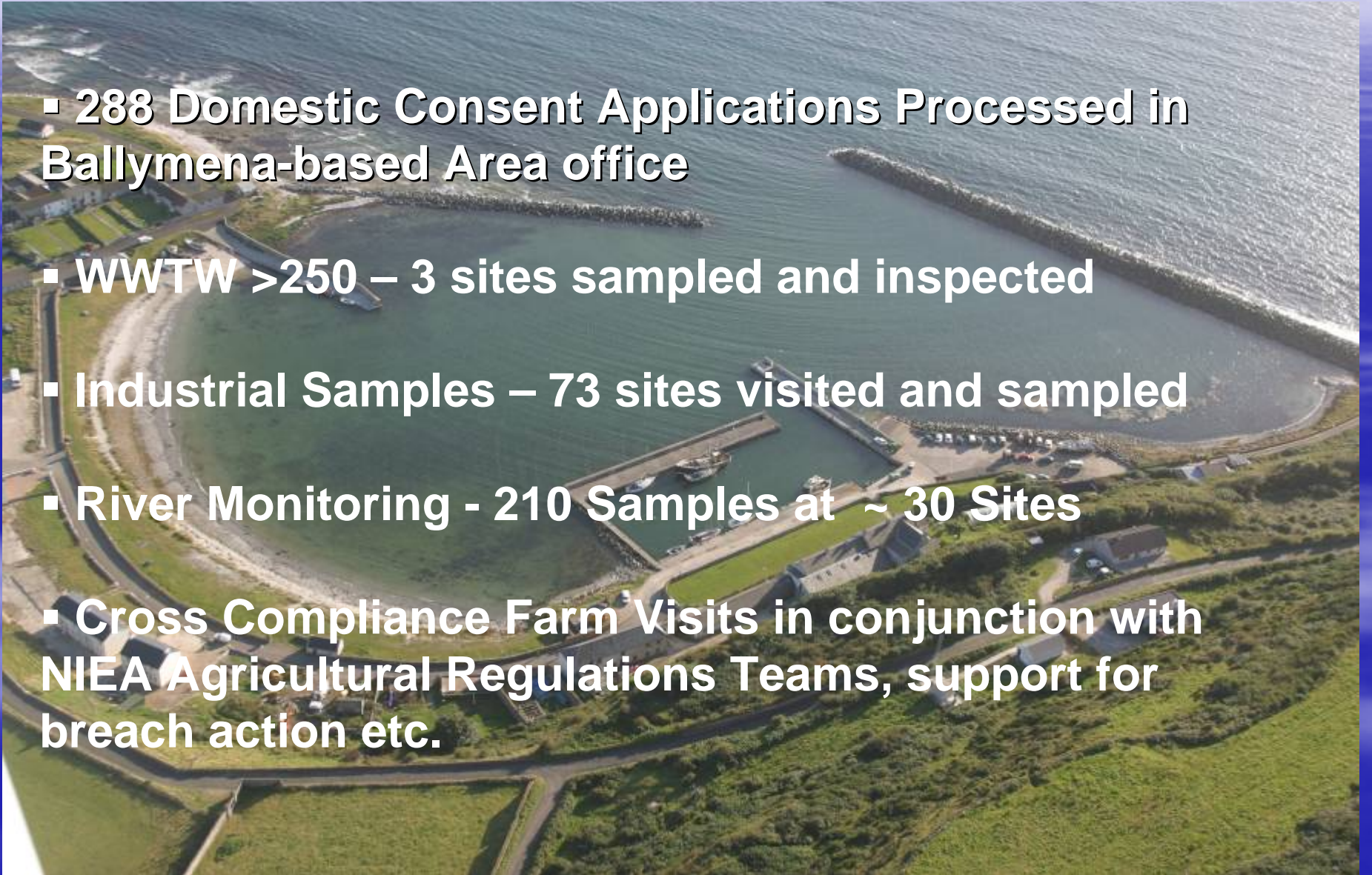
Conor Symington  
Senior Water Quality Inspector

Pollution Hotline  
0800 80 70 60



# Work Statistics

- 288 Domestic Consent Applications Processed in Ballymena-based Area office
- WWTW >250 – 3 sites sampled and inspected
- Industrial Samples – 73 sites visited and sampled
- River Monitoring - 210 Samples at ~ 30 Sites
- Cross Compliance Farm Visits in conjunction with NIEA Agricultural Regulations Teams, support for breach action etc.



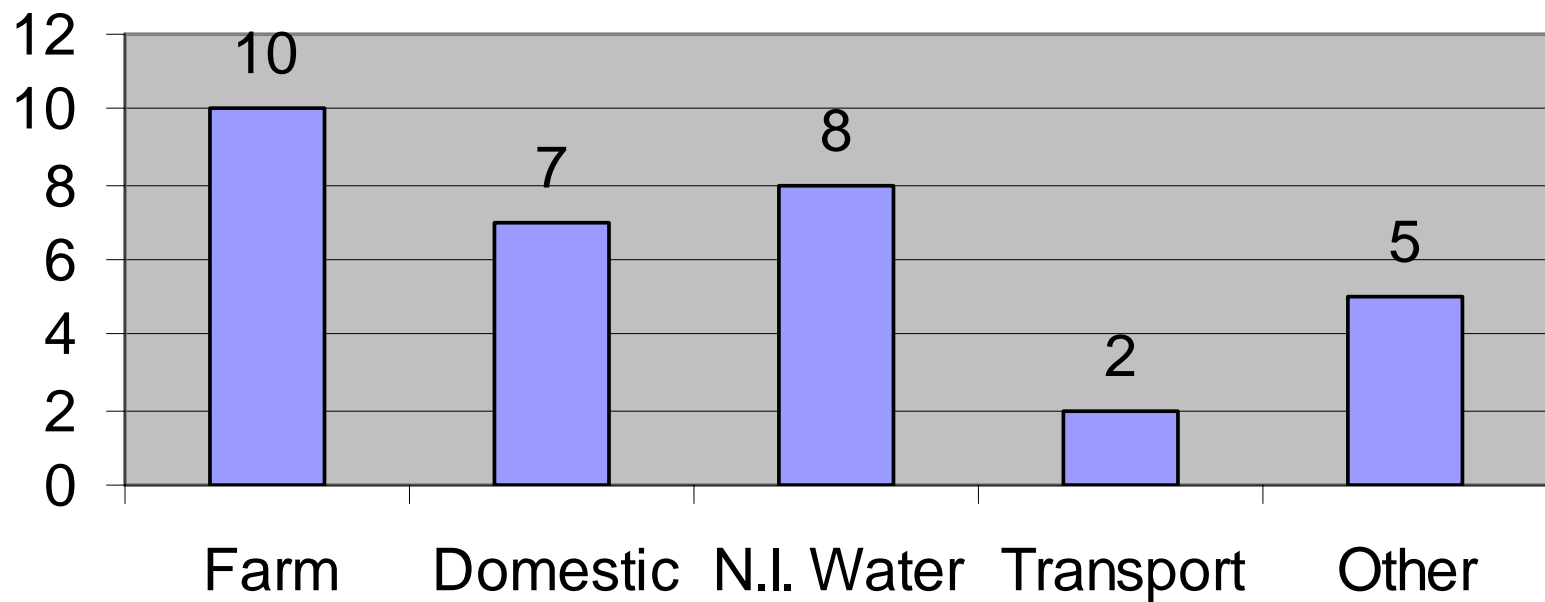
# Pollution Incident Statistics

- 40 Incidents Received
- 32 Substantiated, 8 NPF

Pollution Hotline

0800 80 70 60

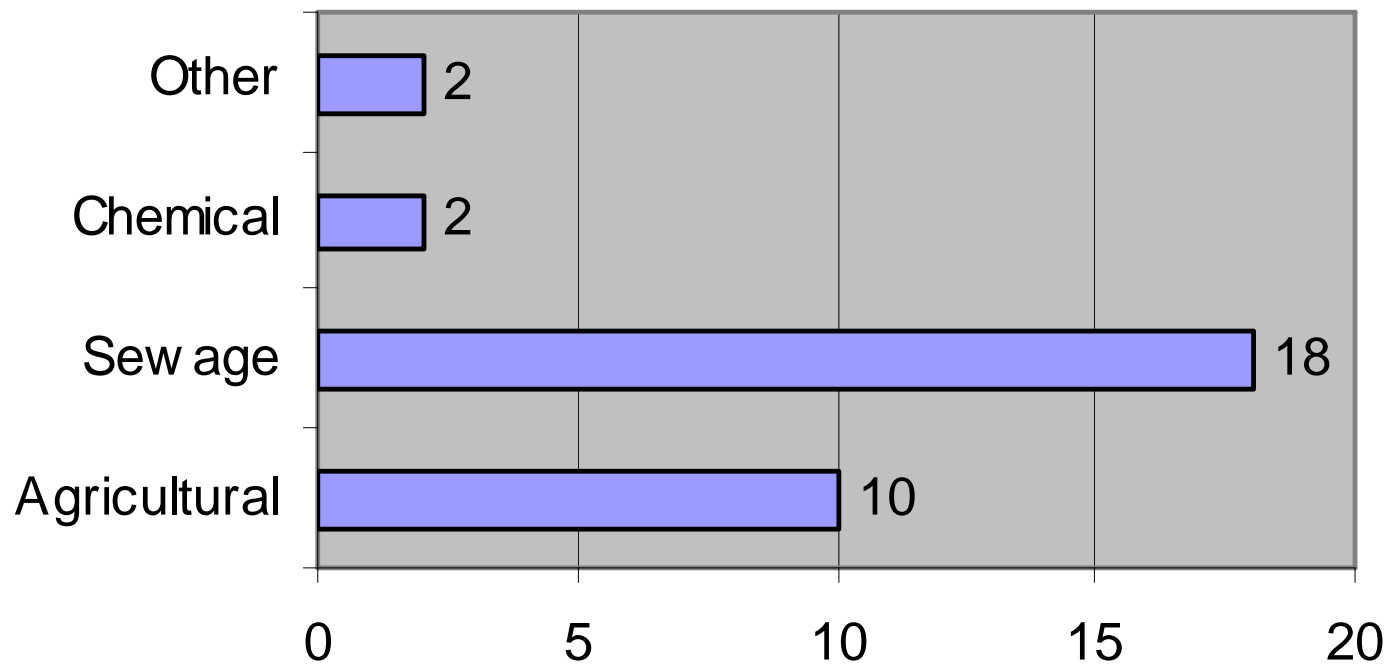
## SOURCES OF POLLUTION - Bush And Glens



Pollution Hotline

0800 80 70 60

# CATEGORIES OF POLLUTION - Bush and Glens Oct 2010 - April 2011



Pollution Hotline  
0800 80 70 60

# Incident Severity

4 x Medium Severity Incidents:

3 Agricultural (2 x Silage, 1 x Cattle Slurry) – Warning Letters and Breaches

1 Transport (Chemical)  
- Cost recovery

1 High Severity Incident:

1 x Statutory sample taken at a sewerage asset in Ballygalley with a view to prosecution

**All** Medium+ Severity Incidents are Cost recoverable where we can identify the polluter – Costs can be many £000s in e.g. a severe oil spill

Pollution Hotline

0800 80 70 60

# Recent and Ongoing Enforcement Action and Outcomes

- Food Processing Company in the Bushmills Area: fined 2x £300 in October 2011. Costs recovered
- Farmer fined in August 2011 for silage pollution in 2009 of the Doughery Water - £350 plus costs.
- Quarry in Ballycastle – Statutory Sample taken to ensure compliance with an enforcement notice - Compliant

Pollution Hotline  
0800 80 70 60



# Types of incident we deal with: Chemical Spill, Larne

21 Sept 2011. Police, DRD Roads and  
NIEA.



# Why is Red Bay so-called?



Pollution Hotline  
0800 80 70 60



Pink colour



- Report received: 0930 hours, 14 Sept 2011
- 1000 hours Incident Investigated, sample taken, delivered to Lisburn at 1230
- Examined by NIEA experts
- Contains fine red seaweed *Aglaothamnions*
- Linked to storms following ex hurricane *Katia*
- Local fishermen alerted

Pollution Hotline  
0800 80 70 60



Glenariff  
Waterfoot Bathing  
Water  
investigations,  
Sept/Oct 2011

0800 80 70 60

# River Bush Catchment

## LMA Work – River Walks

- Walkmill – Walked
- Moss-side Water- Walked
- Well Water - Walked

A number of XC Breaches made at farms where problems were found

Advisory visits

4 x Septic Tank issues identified – will be followed up through WMU HQ liaison

Pollution Hotline


0800 80 70 60



## What's Ahead

- Ongoing training events and exercises for all staff
- Continued programme of Sampling, as well as, e.g. Investigations at Ballygalley and Waterfoot
- Proactive visits, Surveys as required
- Beach Summits and work programmes
- Continue with LMA River Walking and any subsequent enforcement action
- Continued liaison with all stakeholders – CSG Meetings, LMA Work and others

Pollution Hotline  
0800 80 70 60



Thanks for your attention

[conor.symington@doeni.gov.uk](mailto:conor.symington@doeni.gov.uk)

Pollution Hotline

0800 80 70 60

