

RIPPLE

a community led river basin management plan

Mark Horton BSc(Hons) MSc

BREA's Ballinderry Fish Hatchery Ltd
Cookstown, Northern Ireland



Ripple

What is RIPPLE?

- Rivers Involving People, Places and Leading by Example
- Community led River Basin Management Plan
- Getting people involved with rivers through their own interests
- Realising the capacity of our community to help manage the river
 - Sharing ideas
 - Seeing rivers from others' points of view
 - Empowering people to make a difference



Ripple

Who's involved?

- WWF N Ireland Project
- Managed by BREA's Ballinderry Fish Hatchery Ltd
- Funded by Heritage Lottery Fund



Supported by
The National Lottery[®]
through the Heritage Lottery Fund



- The RIPPLE Advisory Network
 - Government Departments
 - Local Council
 - Non-Government Orgs.

Providing support to the project and the community

Ripple



RIPPLE's Aims

- *RIPPLE aims to encourage local people to reconnect with their river and act as a community to preserve and celebrate the heritage of the Ballinderry*
- *RIPPLE aims to act as a demonstration to decision makers and government showing that, if given the opportunity, local people can make the right decisions about local river management issues and contribute to national and international conservation objectives*



Ripple

Ripple

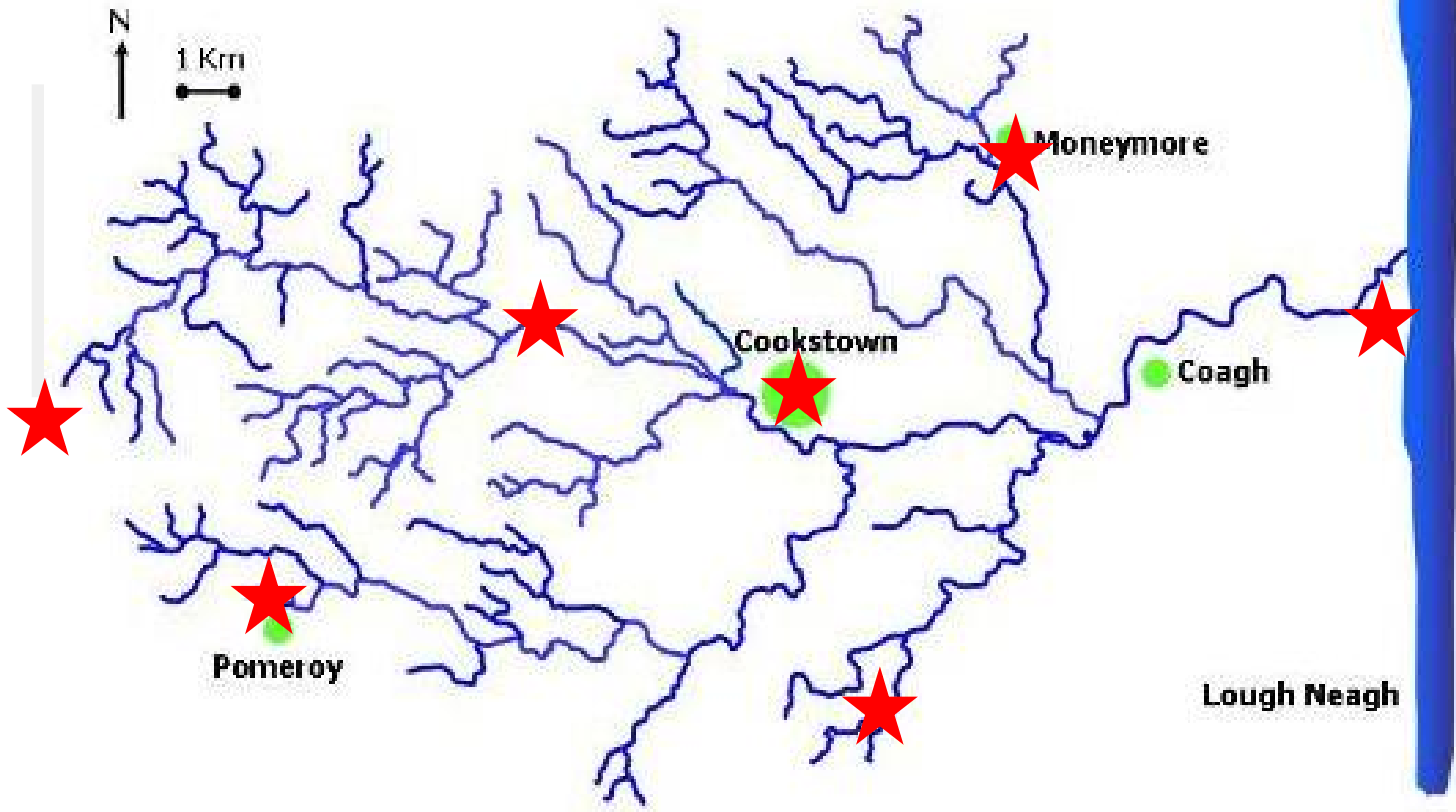
Step 1

CREATING THE PLAN



Ripple

Creating Visions for the Ballinderry River



Ripple



Community Planning

With the help of the Rural Community Network the community were encouraged to create visions for the river

Ripple

300 heads are better than 1...



Ripple



Our Visions

We want better access along the river

We want a better understanding of the river environment

We want a clean river

We want more wildlife in and along the river



Our plan of action



- Created an action plan to achieve the visions
- **115 actions** prioritised by the community
- Actions adopted by **RIPPLE Champions**



Ripple

Ripple

Step 2

**PUTTING THE PLAN
INTO ACTION**



Ripple

Ripple

Vision 1

**BETTER ACCESS
ALONG THE RIVER**



Ripple

ACTION: Audit existing access

13 river-side and lough-side access routes were audited and recommendations made.

The audit will be considered by Cookstown District Council for improvements to each route providing better access and educational opportunities.



Ripple

ACTION: Carry out a scoping study for new access opportunities

Local people helped scope out various possible new access routes.

Local knowledge was used to decide which routes would be most feasible and gain most support from the local community.



Ripple

ACTION: Work with landowners to agree new access

A new 3.5 km riverside path has been created by RIPPLE, Cookstown District Council, BREA, and the Woodland Trust using funds from the Heritage Lottery Fund, Landfill Community Fund and DCAL



Ripple

ACTION: Encourage more young people to use the river

A series of "taster days" will be organised, allowing young people to try out different water activities including:

- canoeing
- kayaking
- bouldering
- raft building
- fly fishing



Ripple

Ripple

Vision 2

**BETTER
UNDERSTANDING OF
THE RIVER
ENVIRONMENT**



Ripple

ACTION: Create a river newsletter providing information on events and points of interest

The newsletter is issued 3 times a year.

Stories are submitted by the community

Events are organised throughout the year providing a range of opportunities for people to get out onto the river

Ripple News
Ballinderry Park, River Clonally to Lurgan
Issue 2 Spring 2008

RIPPLE finds a CURE for the Ballinderry River
A new initiative to solve the problem of the Ballinderry River... The Ballinderry river catchment is a small but healthy group of 100% watercourse catchments... The Ballinderry river catchment is a small but healthy group of 100% watercourse catchments... The Ballinderry river catchment is a small but healthy group of 100% watercourse catchments...

ON THE RIVER THIS SEASON
This is the season of year life both of and along the river. The dragonfly and damselfly eggs that have laid beneath the ground of water will hatch... This is the season of year life both of and along the river. The dragonfly and damselfly eggs that have laid beneath the ground of water will hatch...

COMMUNITY vs THE RIVER ALIENS
More species are breeding, we are now and making the difficult for the locals. Small Invertebrates, Freshwater Annelids, 'Invertebrates' 'Invertebrates' 'Invertebrates'... More species are breeding, we are now and making the difficult for the locals. Small Invertebrates, Freshwater Annelids, 'Invertebrates' 'Invertebrates' 'Invertebrates'...

MAPPING THE WAY FOR RIVER WILDLIFE ATLAS
RIPPLE is looking for your help to create a new atlas of wildlife in Ballinderry and its tributaries... RIPPLE is looking for your help to create a new atlas of wildlife in Ballinderry and its tributaries... RIPPLE is looking for your help to create a new atlas of wildlife in Ballinderry and its tributaries...

River Events
All events are FREE of charge.

Wednesday 26 March 2008 Ballinderry River River walk to Ballinderry	The Ballinderry River is a beautiful river with many opportunities for walking and fishing. The walk will start at Ballinderry Park and go down to the river mouth. The walk will be led by a member of the Ballinderry River Catchment Group.
Thursday 16 & Sunday 19 March 2008 10.00 & 10.30 Ballinderry River to Lurgan	Join us for a day of walking and fishing on the Ballinderry River. The walk will start at Ballinderry Park and go down to the river mouth. The walk will be led by a member of the Ballinderry River Catchment Group.
Saturday 22 March 2008 Ballinderry River 10.00 - 11.00	Join us for a day of walking and fishing on the Ballinderry River. The walk will start at Ballinderry Park and go down to the river mouth. The walk will be led by a member of the Ballinderry River Catchment Group.
Wednesday 4 April 2008 Ballinderry River 10.00 - 11.00	Join us for a day of walking and fishing on the Ballinderry River. The walk will start at Ballinderry Park and go down to the river mouth. The walk will be led by a member of the Ballinderry River Catchment Group.
Saturday 2 May 2008 Ballinderry River 10.00 - 11.00	Join us for a day of walking and fishing on the Ballinderry River. The walk will start at Ballinderry Park and go down to the river mouth. The walk will be led by a member of the Ballinderry River Catchment Group.
Wednesday 4 July 2008 Ballinderry River 10.00 - 11.00	Join us for a day of walking and fishing on the Ballinderry River. The walk will start at Ballinderry Park and go down to the river mouth. The walk will be led by a member of the Ballinderry River Catchment Group.

www.wwf.org.uk/ripple

Ripple





Banks of the Ballinderry FAIR

ACTION: River day

The Banks of the Ballinderry Fair has become an annual event attracting a range of exhibitors including

- Community groups
- Governments orgs
- NGO's

The emphasis is on family fun around the theme of the river.

Education is a key part of the days activities.



some more examples...

Educate businesses and farmers on how to avoid polluting rivers and the impact pollution can have on water quality and wildlife

- Sign posting information for businesses
- Partnering with business on environmental projects
- Talks at farmer's Union meeting – in partnership with DARD CMB

Develop a website which educates people about the plants, animals, geology and history of the river

- Ballinderry River website being developed by BREA
- Local specialists will contribute to content



Ripple

Ripple

Vision 3

A CLEANER RIVER



Ripple

ACTION: Create river task groups to carry out tidy up days along the river (Litter picking, bush cutting etc)

Community members and local groups, such as the Scouts, have joined CURE to help clean up the river

CURE activities include:

- Litter picking
- Bush cutting
- Habitat creation
- Access creation
- Wildlife recording

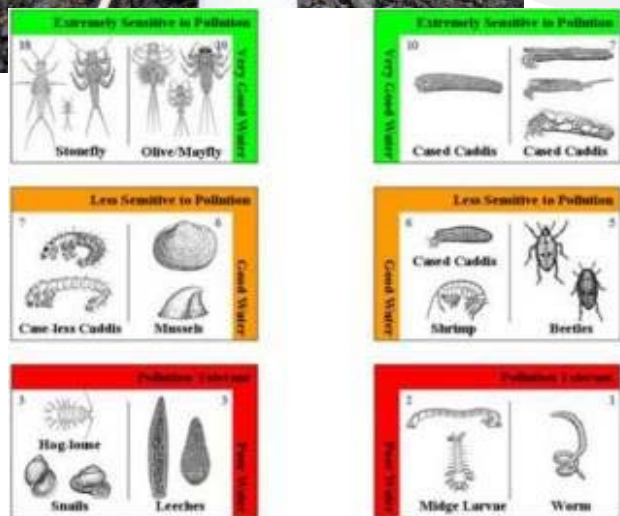


Ripple

ACTION: Establish a community water monitoring network

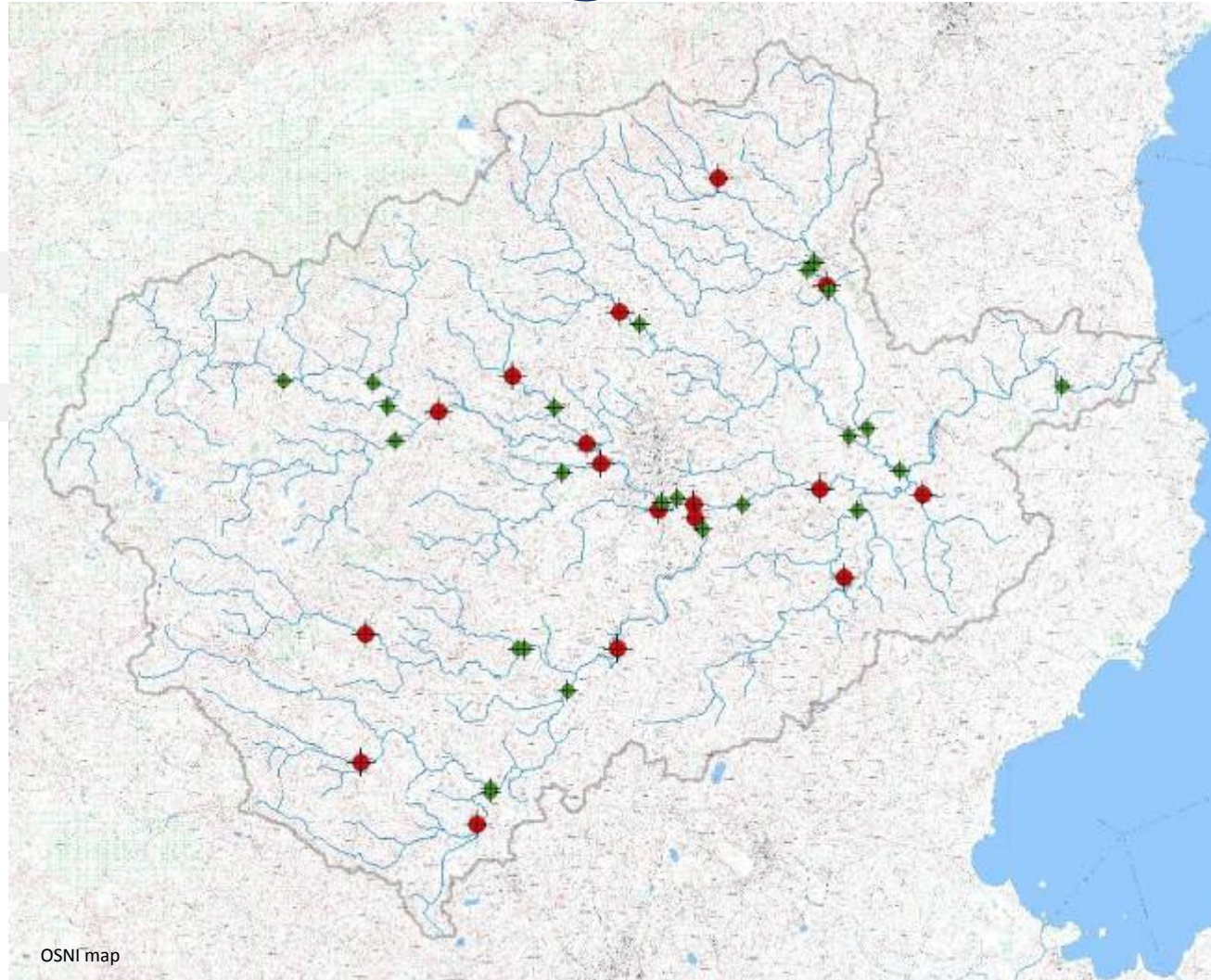
NI Environment Agency is support a NI pilot community monitoring project in the Ballinderry.

24 Volunteers will be trained through the RiverFly Partnership as part of the Anglers Monitoring Initiative.



Ripple

Combined NIEA/AMI monitoring network



Ripple

some more examples...

Identify the septic tank discharge carrying capacity of each watercourse in the river system

- It is hoped that NIEA will carry out a septic tank project in the Ballinderry River system

Clarify responsibility issues for removing fallen animals from watercourses

- Talks held with government stakeholders and local council have highlighted the complexity of the fallen animals problem
- Ballinderry is now contributing to a data gathering exercise to allow NIEA to quantify the problem and plan for effective action



Ripple

Vision 4

**MORE WILDLIFE IN
AND ALONG THE
RIVER**



Ripple

ACTION: Establish a community based non-native invasive plant eradication programme

12 volunteers have been trained to spray near water – more funding secured through Cookstown District Council to train more volunteers

A community-led invasive plant eradication programme is tackling hogweed on the Drumard tributary of the Ballinderry – the source of the hogweed.

Others are being encouraged to tackle the problem at locations downstream.



Ripple

ACTION: Improving habitat for fish

Spawning and nursery habitat is being created in the Ballinderry River system.

Ballinderry Fish Hatchery is currently undertaking a Ballinderry tributary survey to plan for habitat enhancement and creation

Public and school fry release days are held where the community help restock the river



Ripple

some more examples...

Provide training on non-native invasive plant and animal identification

- A pocket guide to assist the public in the identification of invasive plants has been created
- ID training days are being planned and invasives will feature on the new website

Collect all known information on river wildlife and habitats in the Ballinderry River system

- Information on wildlife surveys along the river has been collated and additional survey information is being added by local experts
- This information is being used to create a Biodiversity Atlas of the river



Step 3

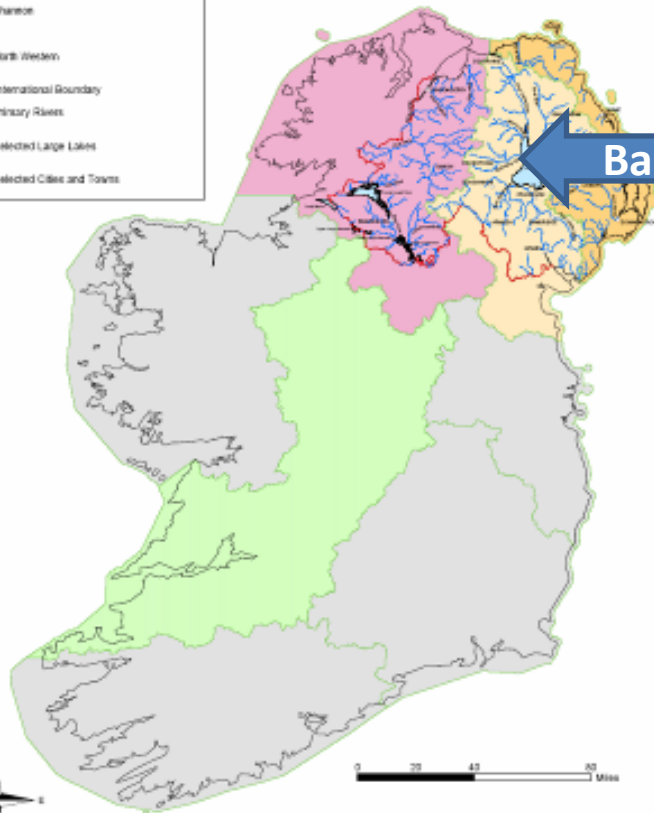
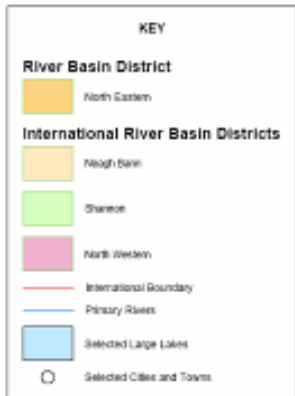
COMBINING THE COMMUNITY-LED PLAN WITH THE GOVERNMENT-LED WFD PLAN



Ripple

WFD and RIPPLE

**River Basin District and
International River Basin Districts
(Northern Ireland) 2003**



- Part of the Neagh Bann IRBD
- Ballinderry LMA plan being devised in partnership between NIEA/BREA/other stakeholders
- Huge potential for Gov-led LMA to incorporate Community-led RIPPLE plan



Ripple

© 2003 NIEA/BREA. All rights reserved. This document is the property of NIEA/BREA. It is not to be reproduced or transmitted in any form or by any means, electronic or mechanical, including photocopying, recording, or by any information storage and retrieval system. NIEA/BREA is not responsible for any errors or omissions in this document. The information in this document is for general information only. It is not intended to be used as a basis for any legal or other action. NIEA/BREA is not responsible for any loss or damage, including consequential loss or damage, arising from the use of this document. NIEA/BREA is not responsible for any loss or damage, including consequential loss or damage, arising from the use of this document. NIEA/BREA is not responsible for any loss or damage, including consequential loss or damage, arising from the use of this document.

Where top-down and bottom-up meet

- Lots of areas of overlap



- Other two visions are often a means to an end – engaging more people through their hobbies and interests



Continued...

- Meetings with Catchment Officer to identify overlap
- LMA now includes National and NI POM as well as RIPPLE Community actions
- Community helping government deliver WFD objectives
- Government helping community realise their visions for the river



Summary

- RIPPLE is *engaging people* in the development of an *action plan*
- That action plan will help achieve both *local and national objectives* – not least contribute to '*good ecological status*'
- RIPPLE is demonstrating that local people can get *involved*, be *inspired* and make *decisions* about their local water resources
- Realising the *value* of these resources is what helps people see the importance of *healthy river systems* and how this can benefit the community
- Never underestimate the *knowledge and will* of the community
- No-one knows the river better than the people who live and work next to it – see the *potential*, realise the *value* and act together to *achieve* the objectives



Ripple

If you want to learn more about RIPPLE...

Mark Horton

RIPPLE Project Coordinator

Ballinderry Fish Hatchery Ltd

Orritor Road

Cookstown

Co. Tyrone

BT80 9ND

Tel: 00 44 (0)28 867 61515

E-mail: mark@bfhtrust.org

Web: www.wwf.org.uk/ripple



Supported by

The National Lottery[®]
through the Heritage Lottery Fund



Ripple

