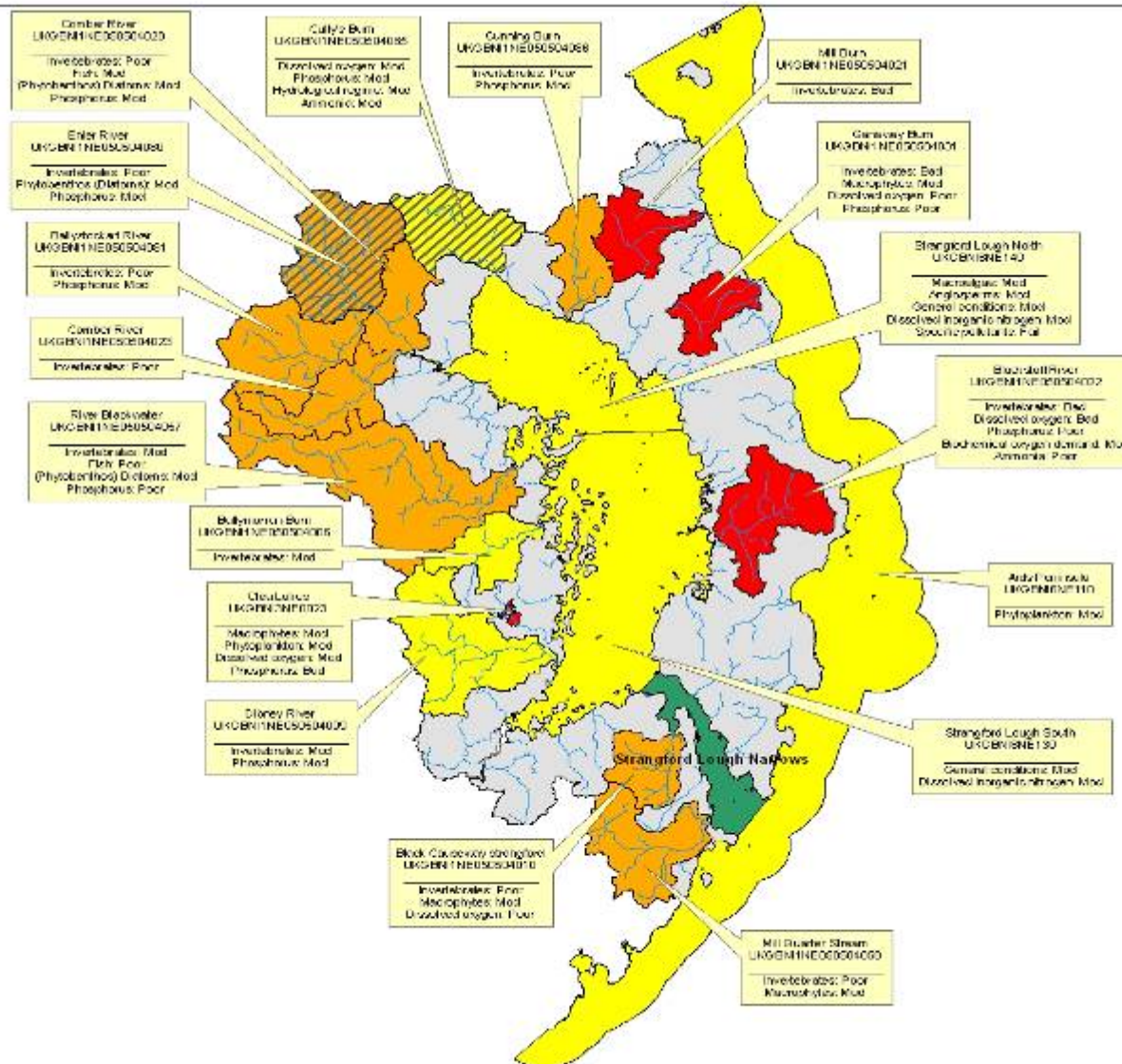


# Strangford Local Management Area Update

# 2009 status of water bodies in Strangford LMA



Based upon Ordnance Survey of Northern Ireland's data with the permission of the Controller of Her Majesty's Stationery Office. © Crown copyright and database rights EMOU2062. Unauthorised reproduction infringes © Crown copyright and may lead to prosecution or civil proceedings.

# Strangford Action Plan

- To deliver objectives
- Based on scientific monitoring & assessment data.
- Local knowledge – stakeholder meetings, update information leaflets
- Prioritise action, e.g. river walks, target monitoring & inspections
- Local action, e.g., removal of aliens, river clean-ups, fisheries enhancement
- Rolling programme

# Strangford LMA Update

- LMA Action Plan published to NIEA website
- Bathing Water Profiles for Ballywalter and Millisle published
- Phosphorus Nutrient Budget
- INTERREG IV a – To develop ecological monitoring tools for lake management to be completed

# Strangford Lough Update

- Spartina Control areas sprayed in 2010 and areas to be re-sprayed in 2011
- Rapid Hydro morphology Assessment (RHAT) surveys – 3 carried out in area and 1 desktop survey
- Pollution Hotline Signs to be launched 18<sup>th</sup> April

# Strangford LMA Update

- Inventory of Physical Structures
- Pollution Prevention Visits mainly to Industrial Estates
- In-channel fishery habitat enhancement for River Enler scheme designed by DCAL – need to secure funds

# Strangford LMA Update

- Carried out survey at 66 sites in 5 water bodies
- Agricultural Regulations Enforcement Team visited suspect farms
- Liaised with Rivers Agency to improve habitat after maintenance work
- Referred suspected pollution to Regional Operations for further investigation
- Referred details of suspected invasive species to Natural Heritage for confirmation



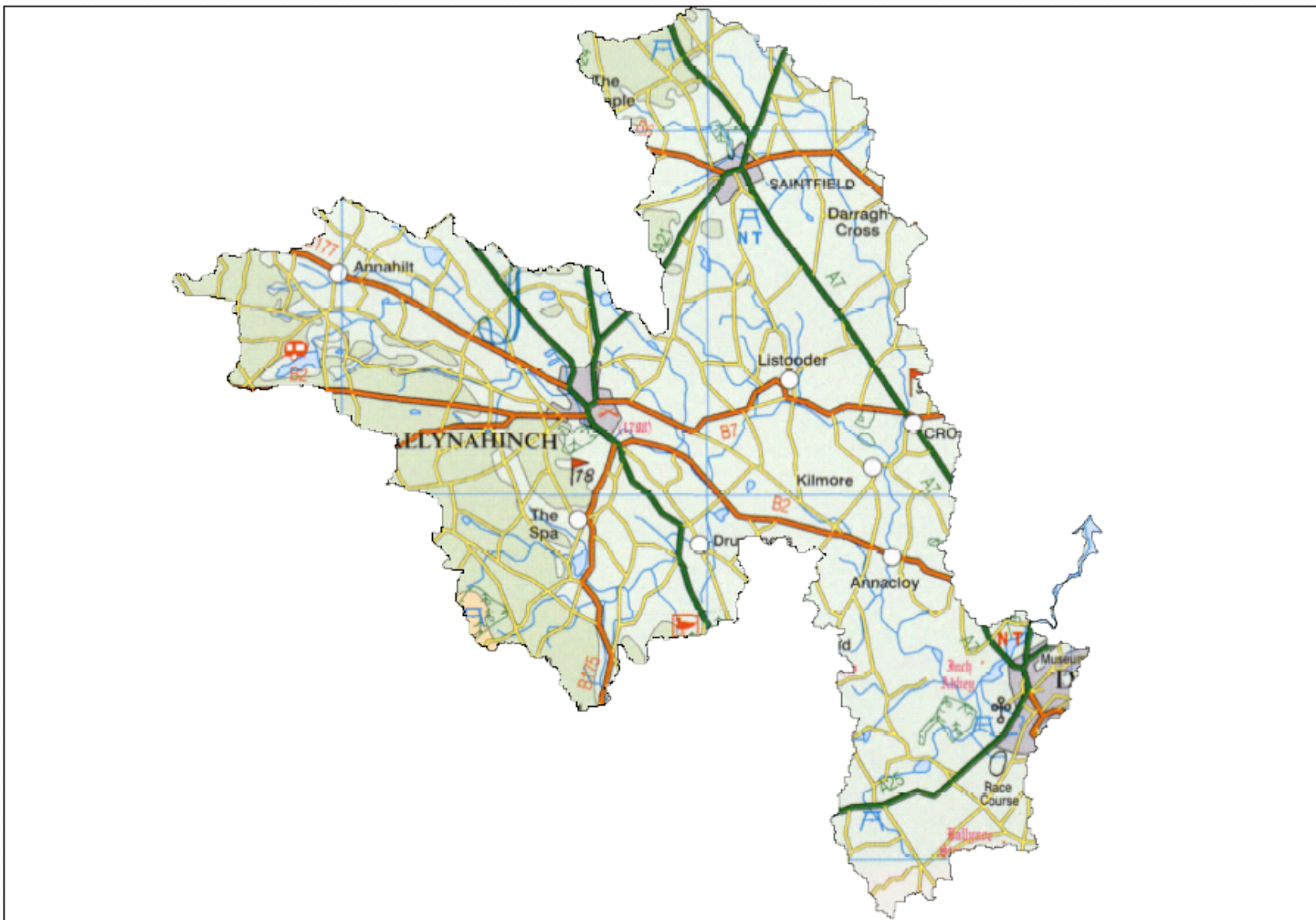


# Strangford in 2011?

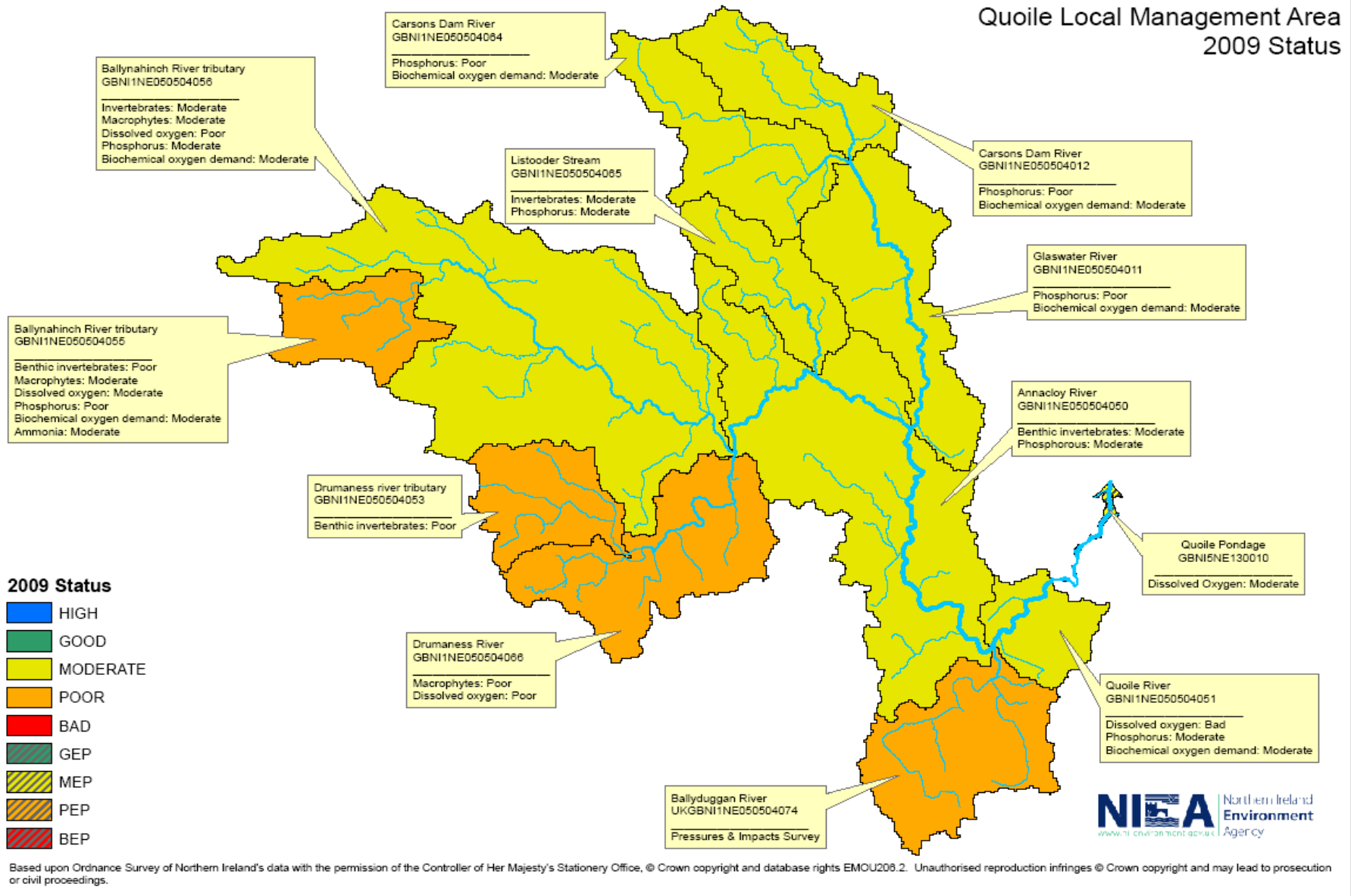
- Will continue to progress with actions
- Will continue to survey the area
- Will continue to update at next CSG meeting



# 2011 - Quoile Local Management Area

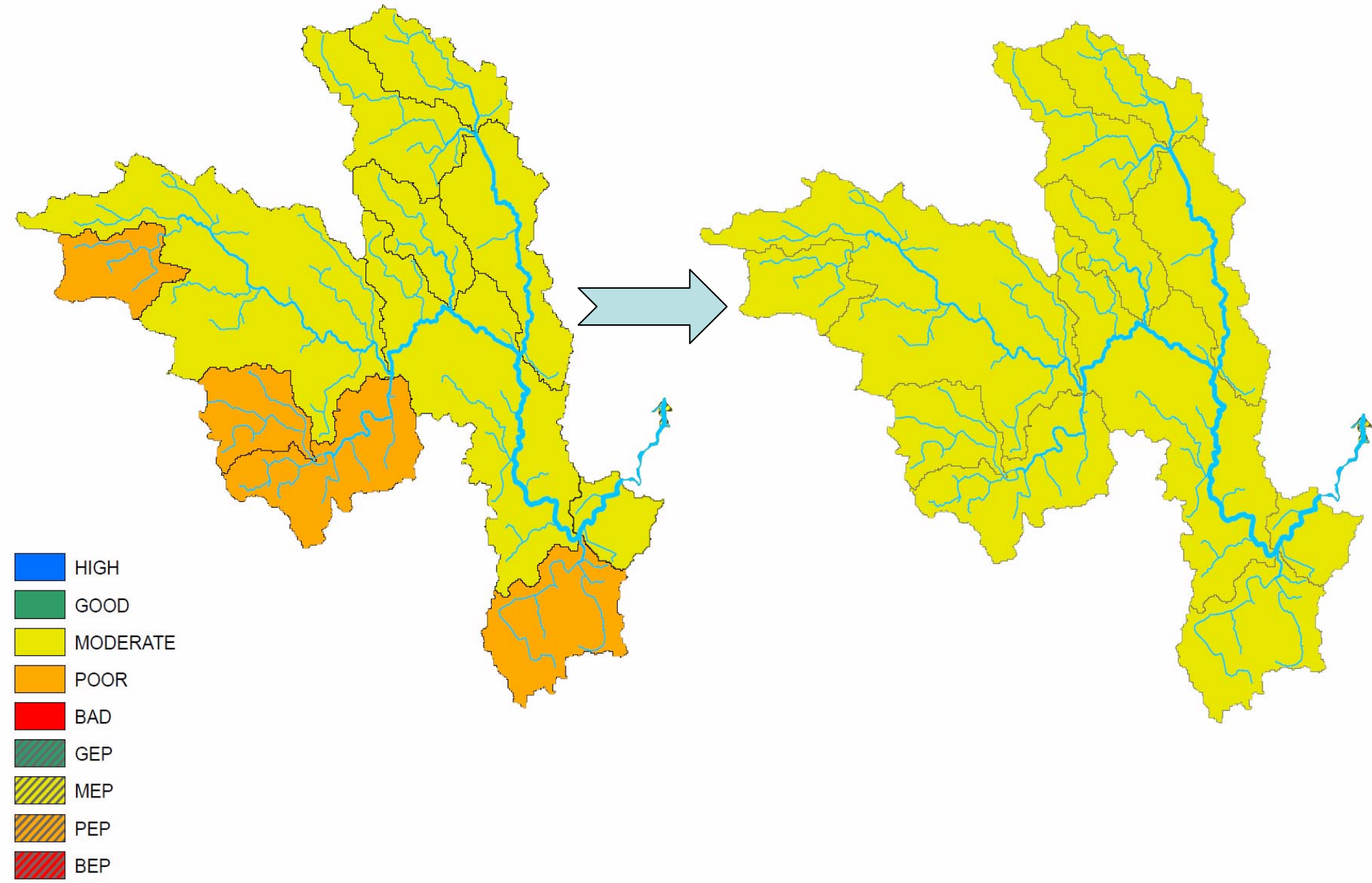


# Quoile Local Management Area 2009 Status



2009

2015



# Structure of Workshop

- Ordnance Survey Map
- Map showing water body status – also shows elements at less than good status.
- Identify on the map, locations where there are environmental issues or concerns that may be affecting status or actions/ improvements currently being carried out.
- Provide details on the back of the map and identify the location on the LMA map.
- Information will be used to inform the LMA action plan.

Our aim is to protect, conserve  
and promote our natural and built  
environment for the benefit of  
present and future generations.

