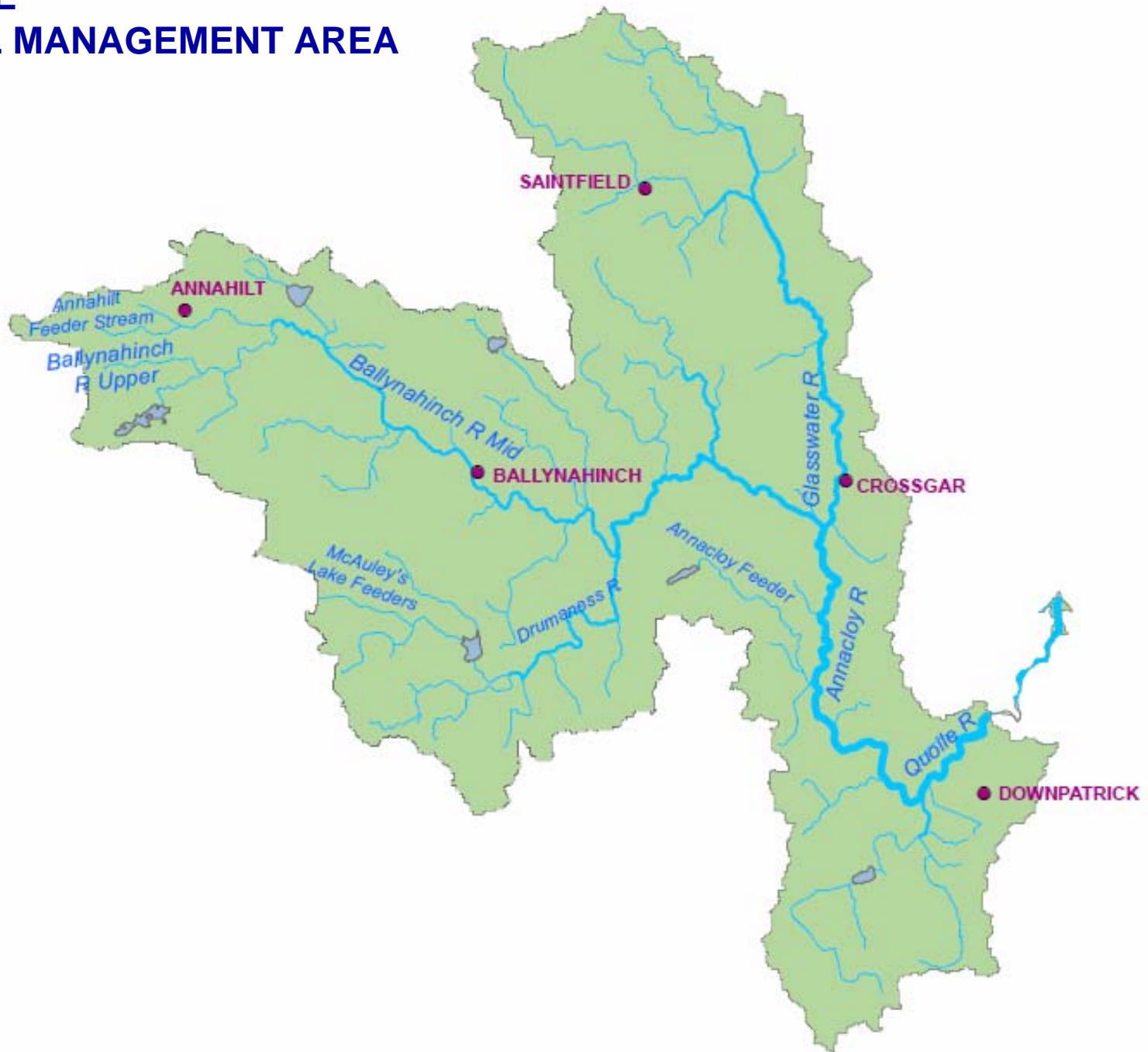


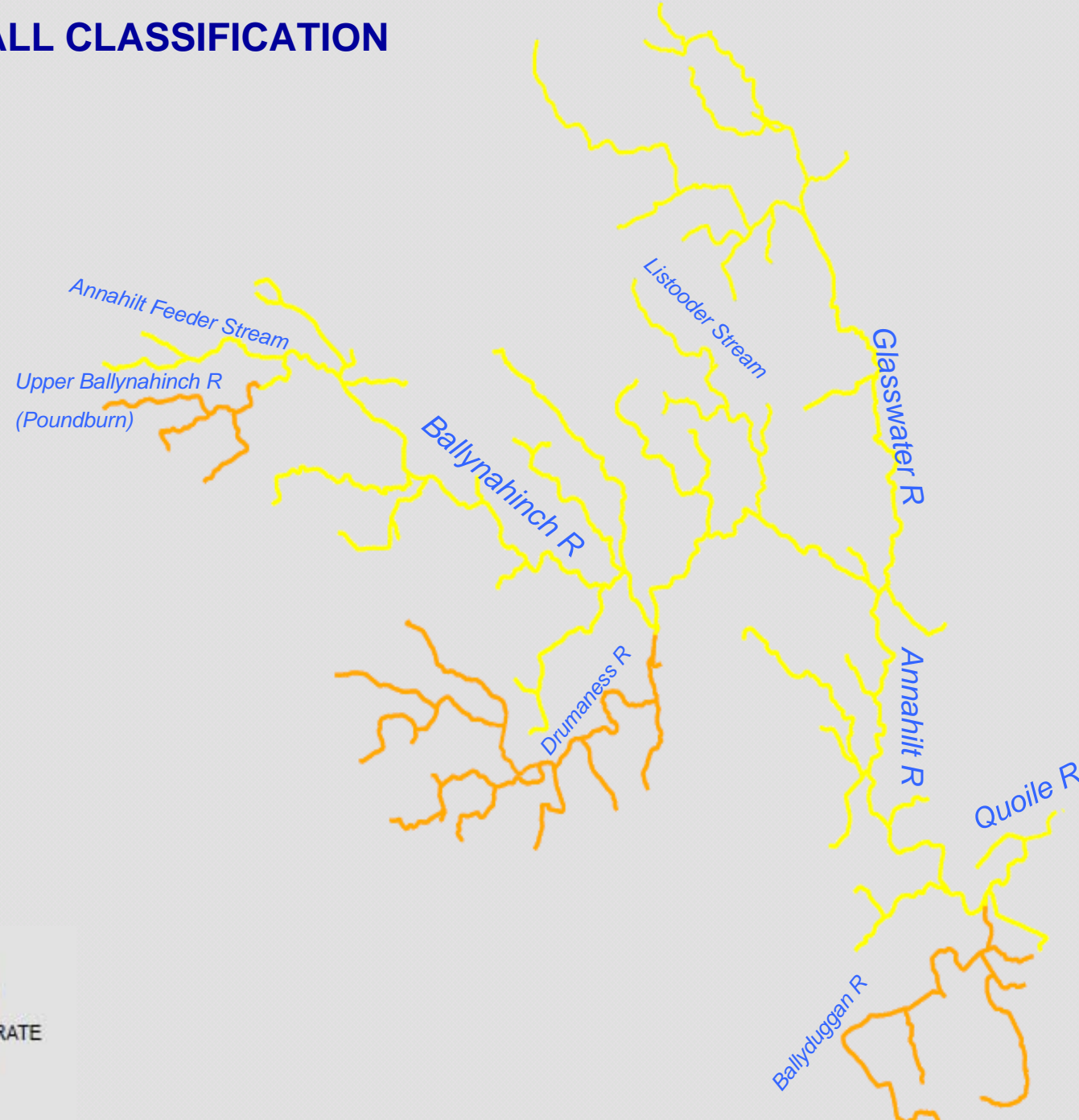


# Water Quality Planning in Quoile Local Management Area

# QUOILE LOCAL MANAGEMENT AREA



# OVERALL CLASSIFICATION



-  HIGH
-  GOOD
-  MODERATE
-  POOR
-  BAD

# LAND USE PRESSURES IN QUOILE LMA

Rural

Agriculture



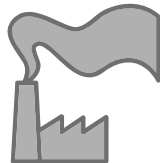
Waste Water Treatment Works



Septic Tanks



Industrial discharges



Urban

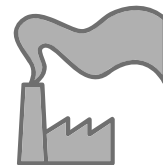
Waste Water Treatment Works



Combined and emergency sewage overflows



Industrial discharges

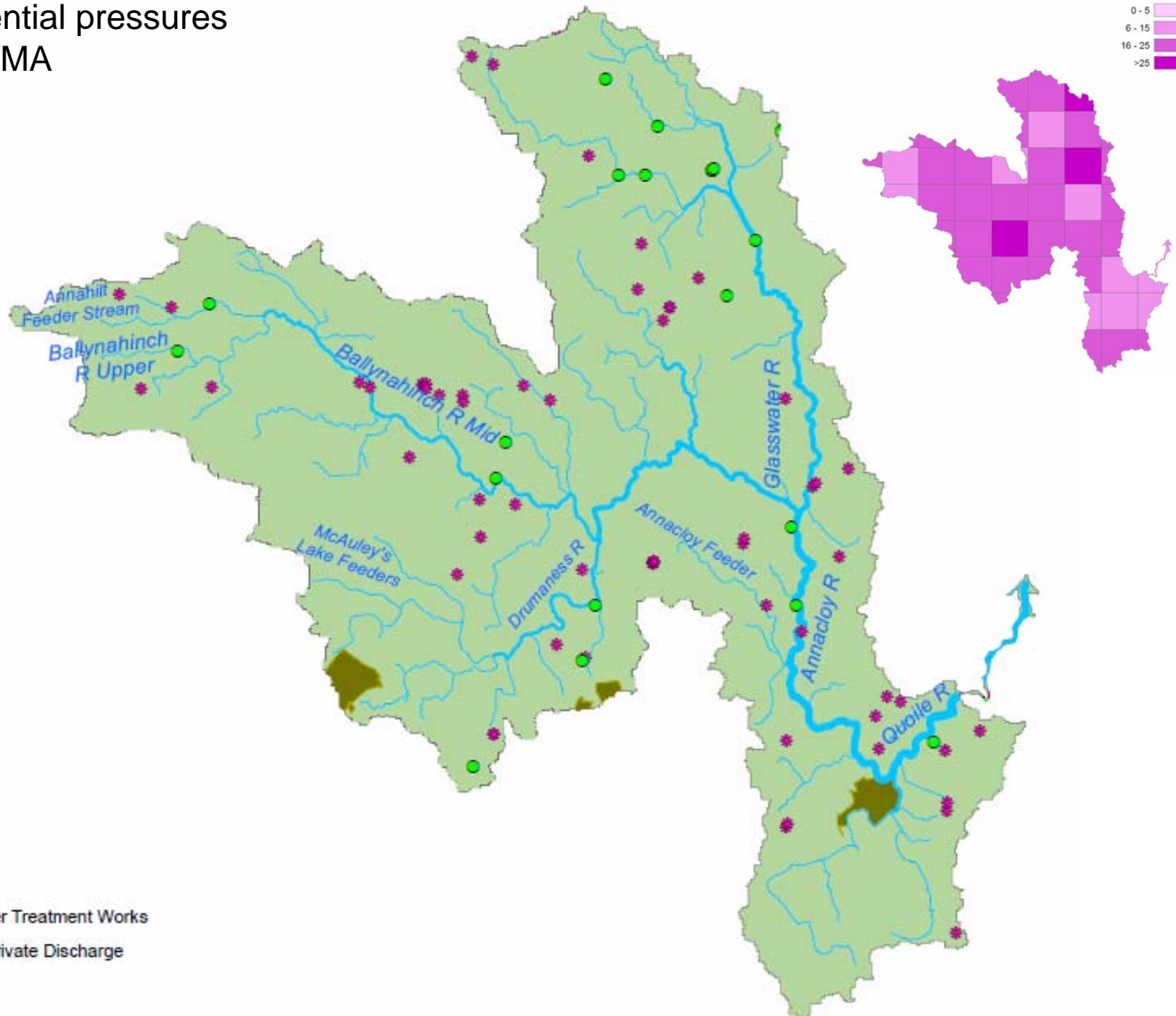


Domestic misconnections



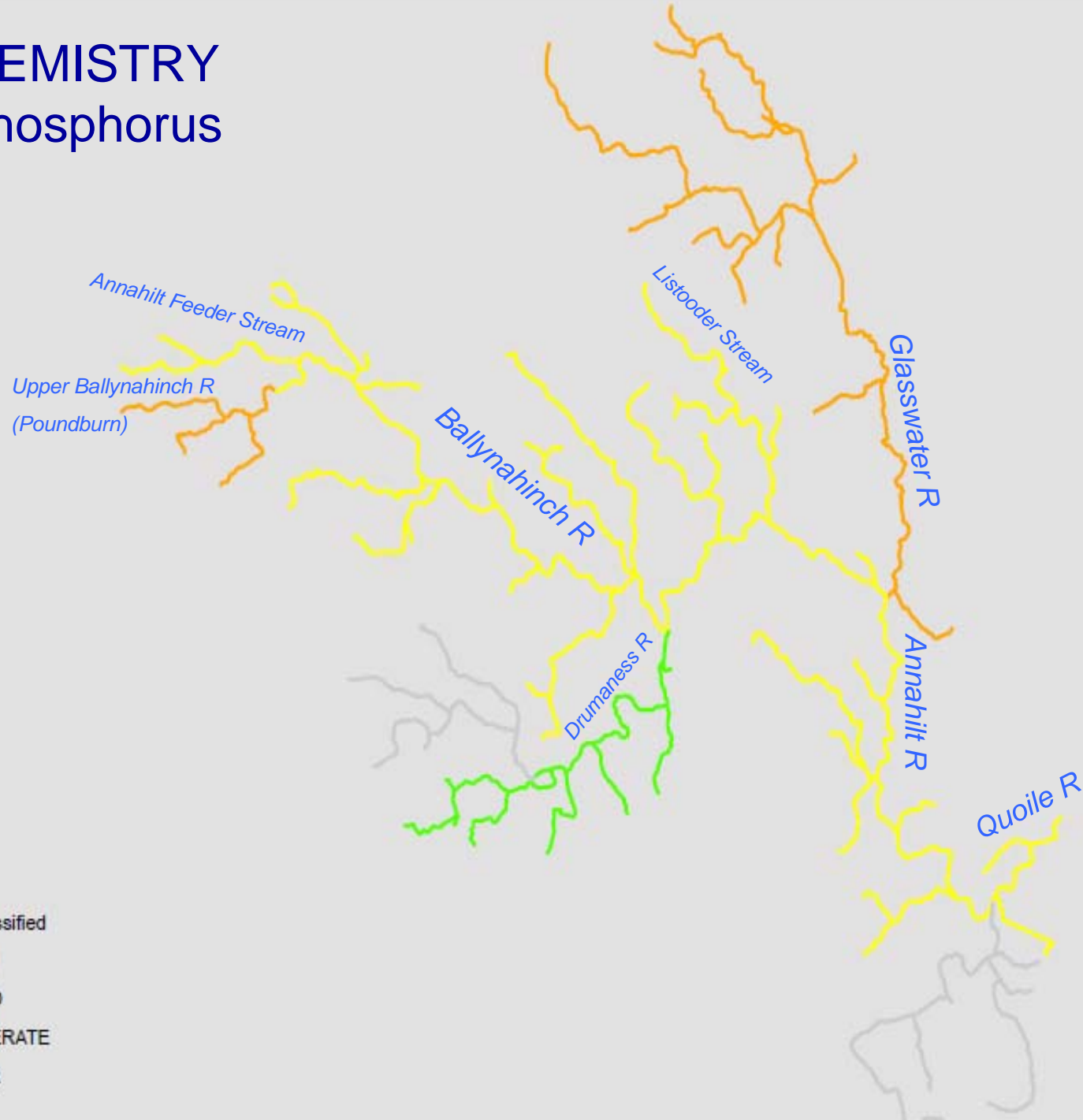
# Some potential pressures in Quoile LMA

- Waste Water Treatment Works
- ✳ Industrial/Private Discharge
- Forest



# CHEMISTRY

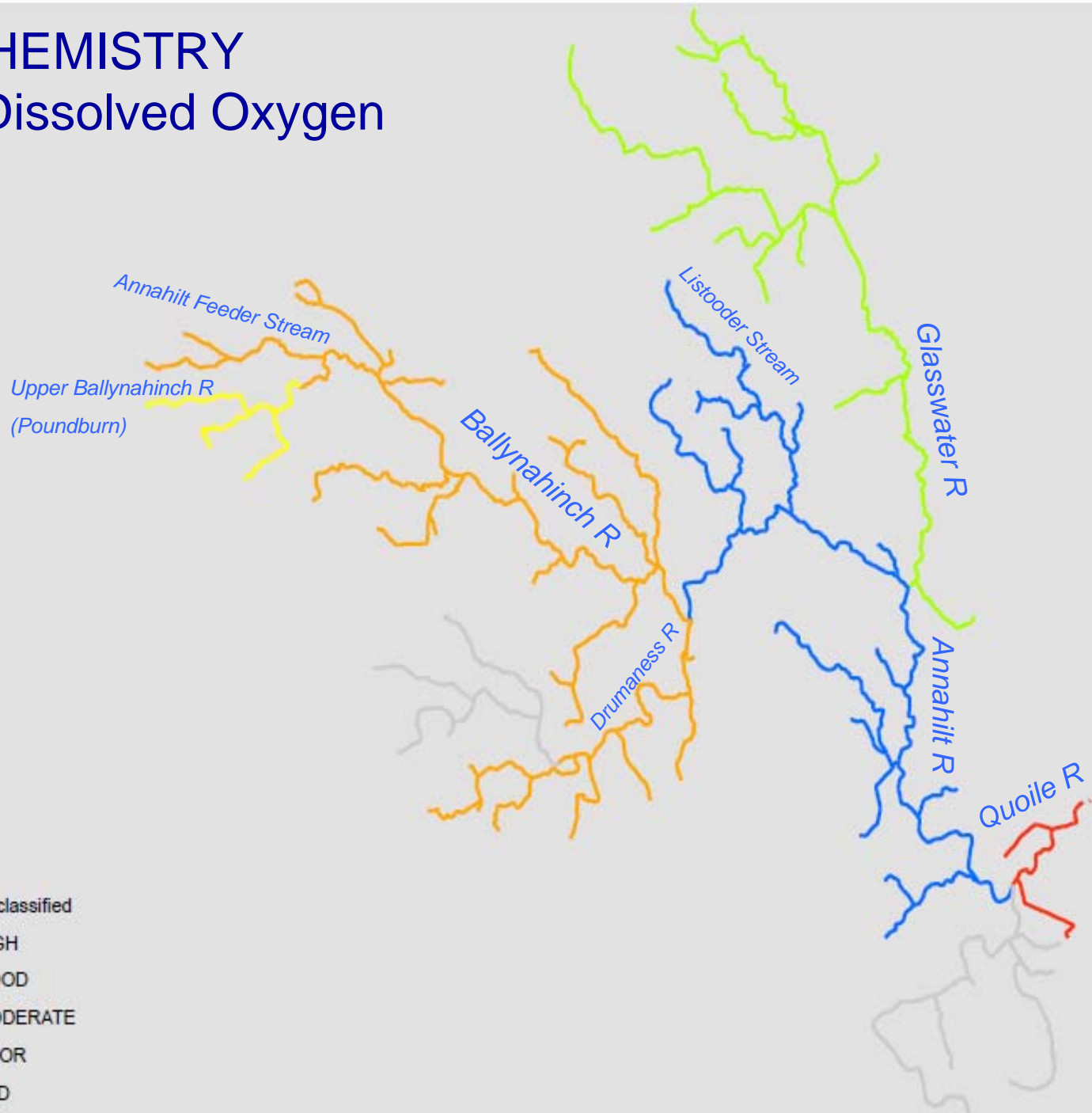
## - Phosphorus



- Unclassified
- HIGH
- GOOD
- MODERATE
- POOR
- BAD

# CHEMISTRY

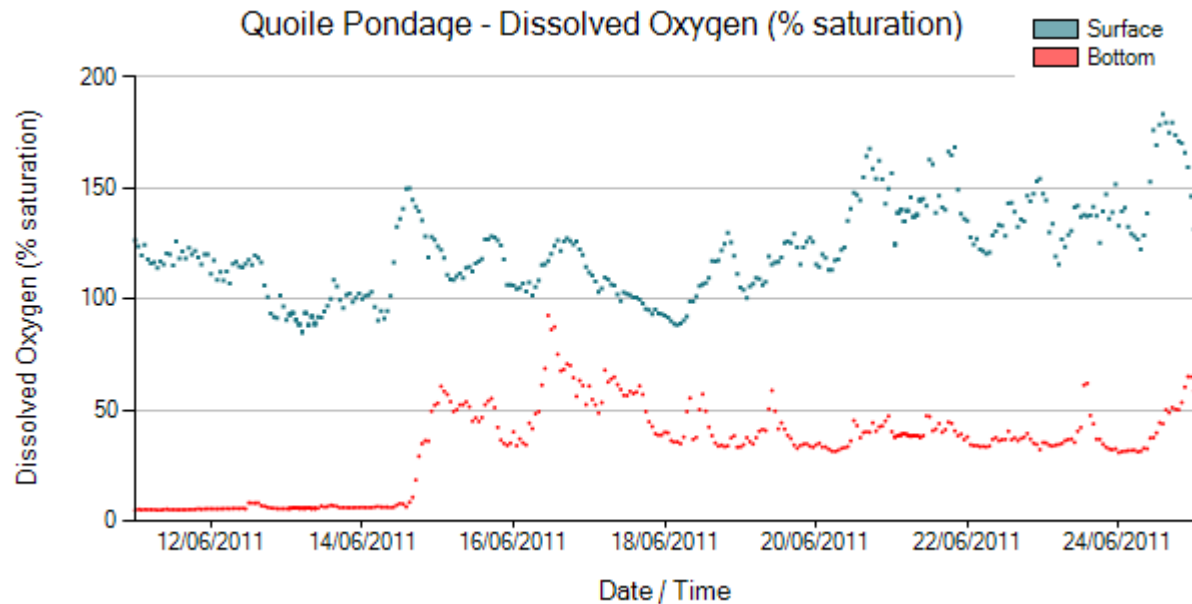
## - Dissolved Oxygen



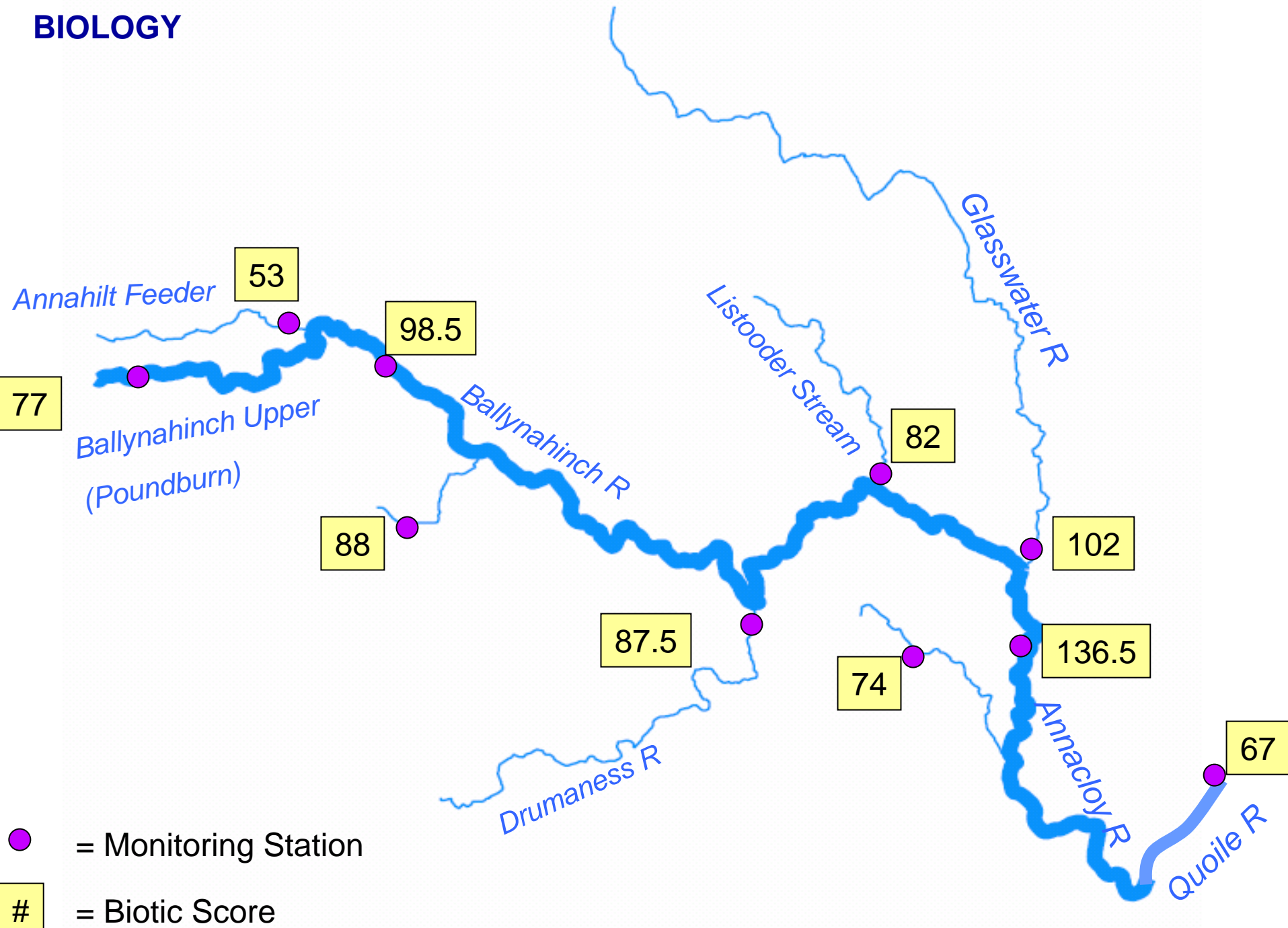
# Dissolved Oxygen in Quoile Pondage

Natural tidal fluctuations in the Quoile Pondage are modified by the tidal barrage located at the mouth of the river where it meets Strangford Lough.

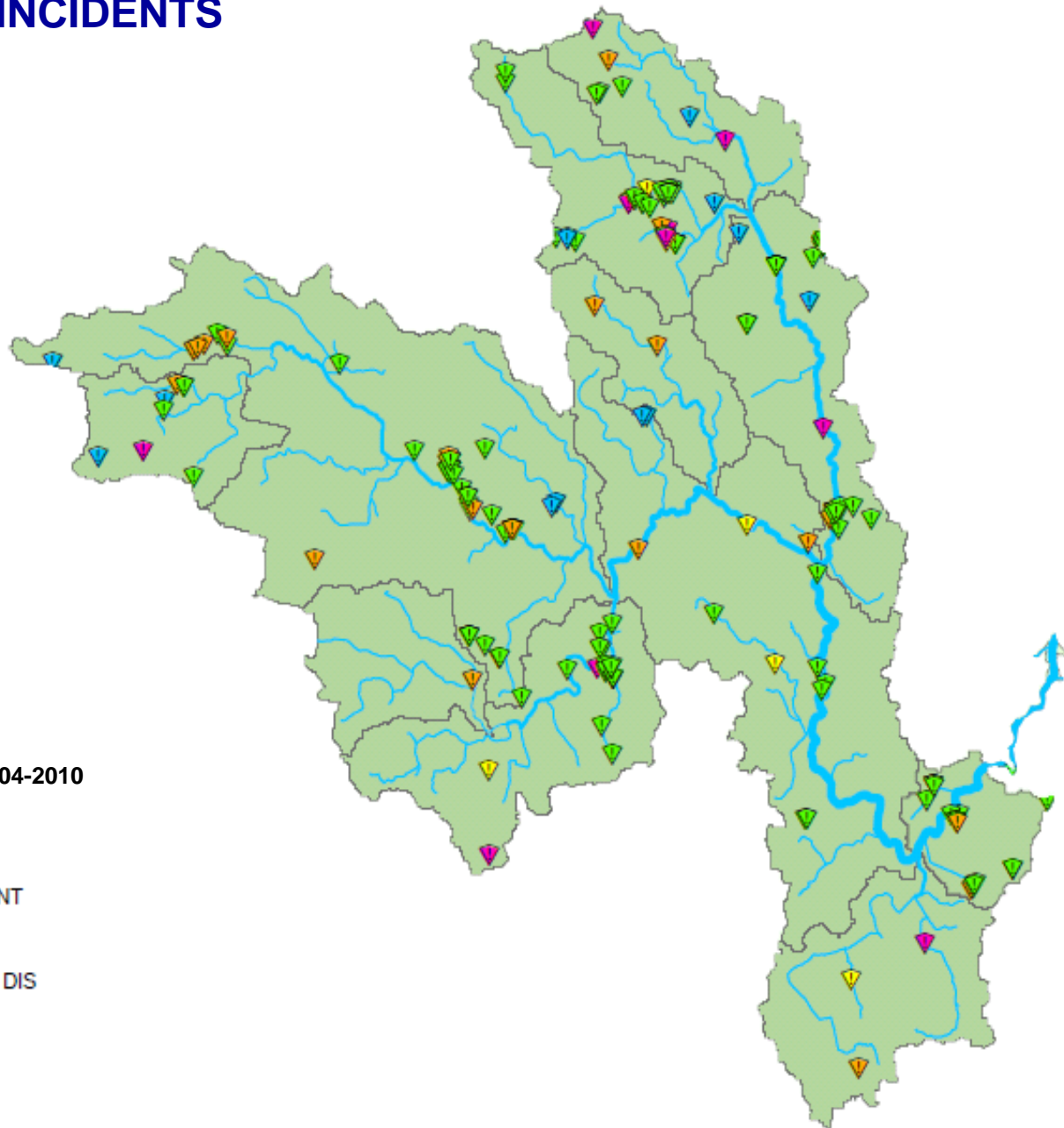
Two Valeport 606 monitoring instruments are located in the main basin of the pondage near to the barrage; one instrument is near surface whilst the other is near-bottom.



# BIOLOGY




# POLLUTION INCIDENTS



Confirmed incidents 2004-2010

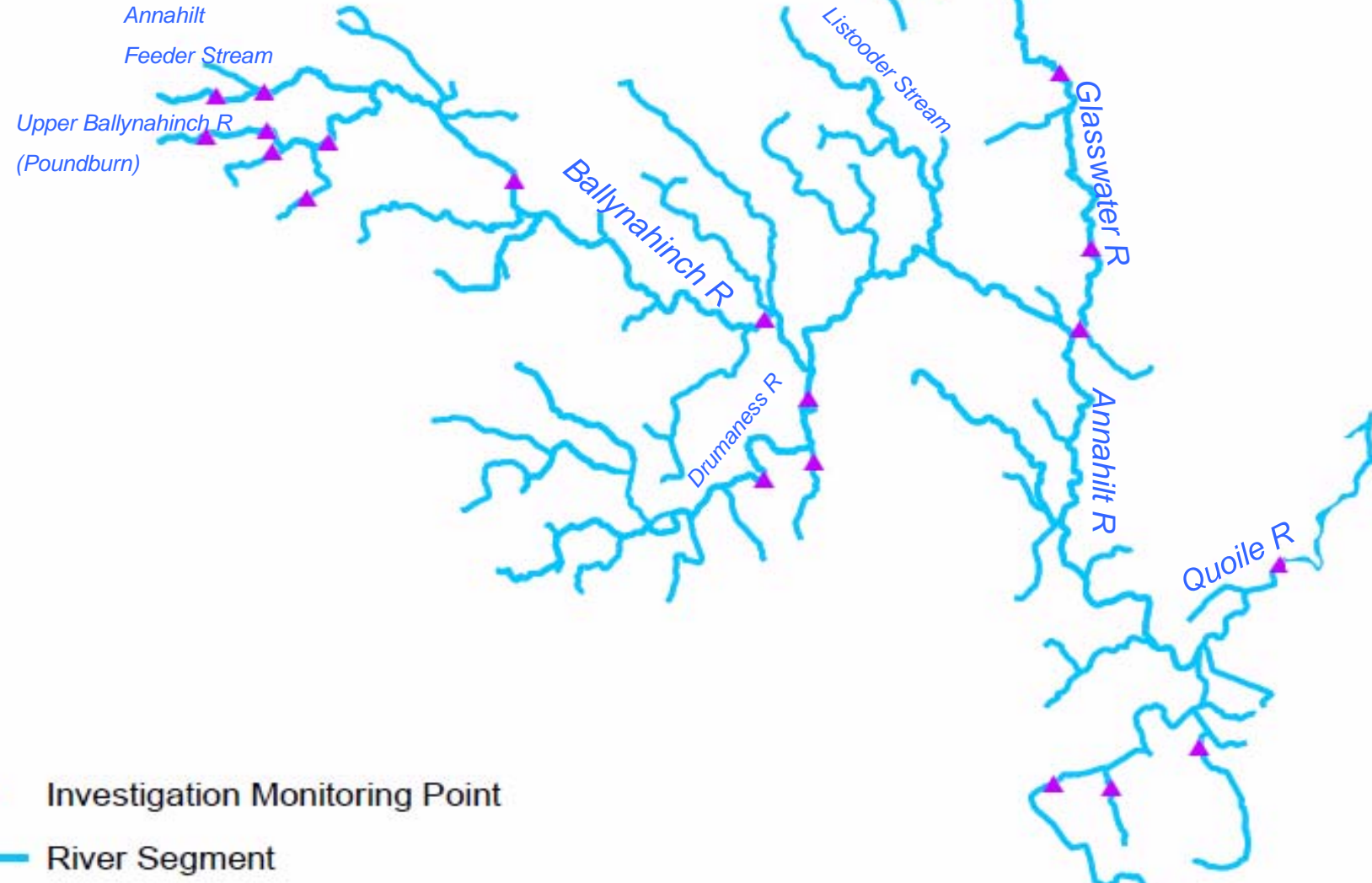
## CATEGORY

-  AGRICULTURE
-  BREACH OF CONSENT
-  CHEMICAL
-  NON AGRIG. WASTE DIS
-  OIL
-  OTHER
-  SEWAGE

 River Water Body



# Extra biological monitoring in Quoile LMA as a result of Water Quality Planning



▲ Investigation Monitoring Point

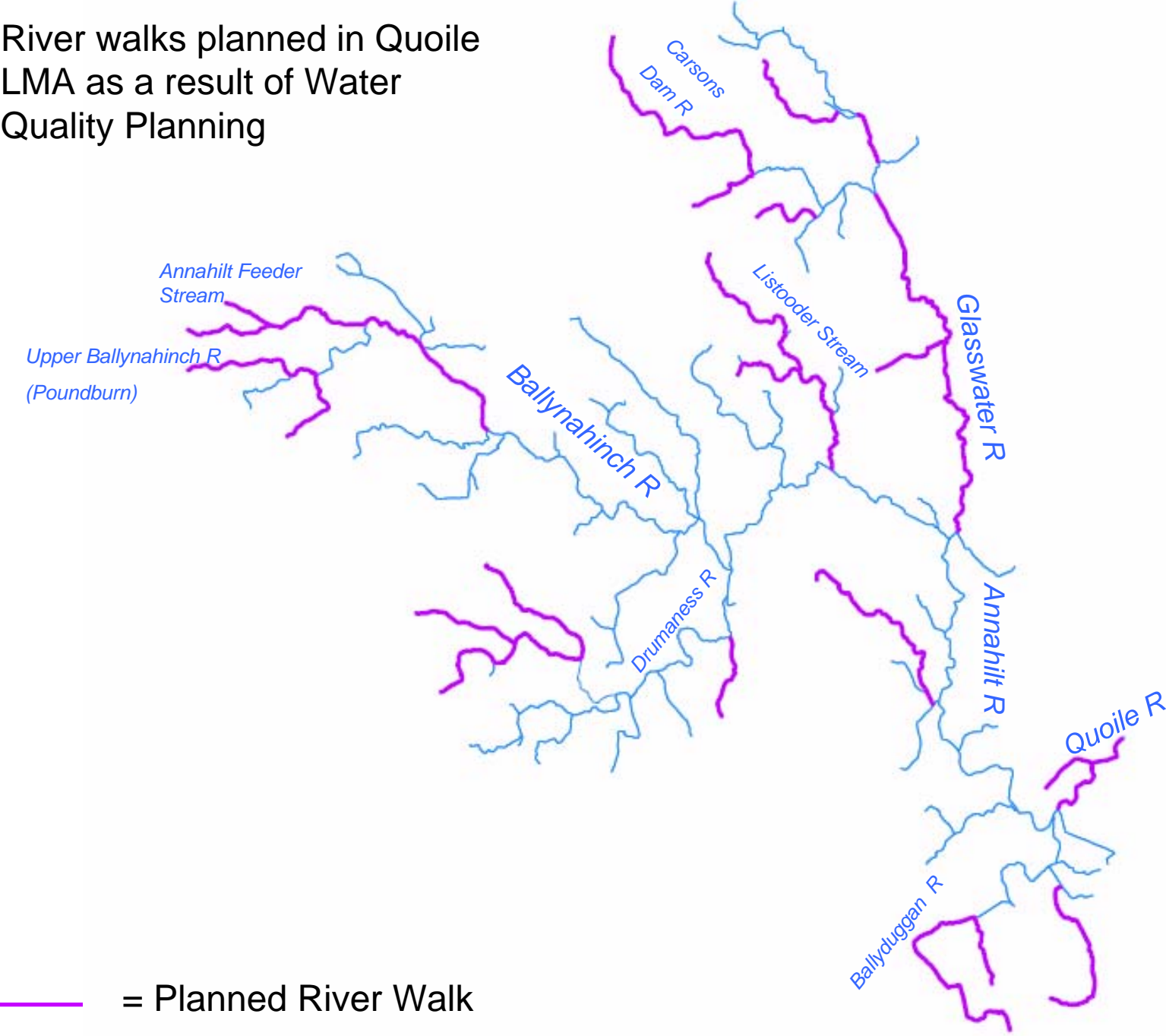
— River Segment

# River walks for heavily impacted areas

- Evidence of pollution e.g. discharges, sewage fungus
- Surrounding land use and buffer strips
- Morphology impacts
- Invasive alien species



# River walks planned in Quoile LMA as a result of Water Quality Planning



 = Planned River Walk

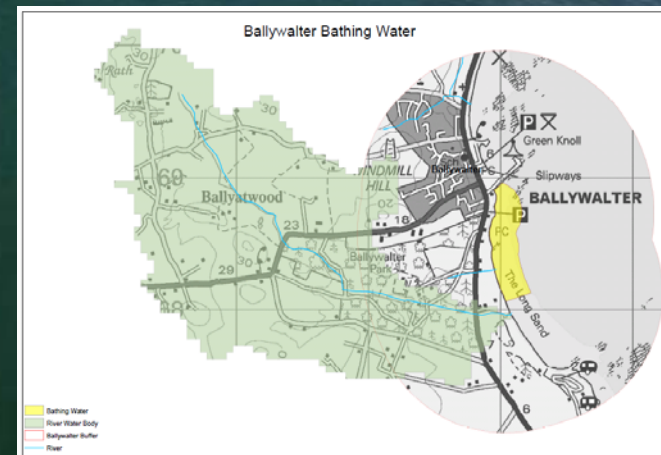
# STRANGFORD LMA







# Good Beach Summit



**Ballywalter Bathing Water Quality 2006-2010**

Bathing Water	2006	2007	2008	2009	2010
Ballywalter	Good	Good	Good	Good	Excellent

Key: ● Excellent ● Good ● Poor

Our aim is to protect, conserve  
and promote our natural and built  
environment for the benefit of  
present and future generations.

