



# NS SHARE

North South Shared Aquatic Resources

## Significant Water Management Issues (SWMI) Update

WFD Stakeholder Group - February 2007  
Grace Glasgow – RPS Consulting Engineers



## SWMI – What is it?

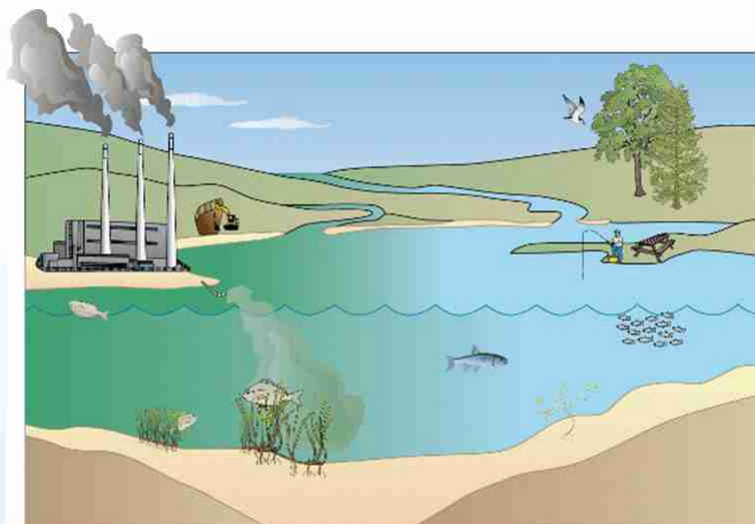


- Public information and consultation booklet to encourage active involvement of all interested parties in the Water Framework Directive
- Article 14 – *interim overview of the significant water management issues in the river basin, made available for public and users comment, 2 years before the beginning of the river basin management plan*
- A “local” document

## SWMI - What is it?



- SWMI = Significant Water Management Issues
  - Significant Water Issues
    - Management Issues
- How to identify priorities and focus efforts for the first river basin management plan?



# SWMI Group Discussions



## ***Water Issues***

What issues are the most significant?

What do you see as the main causes of these problems?

## ***Management Issues***

What are the management gaps?

Is there ownership of local problems?

What activities might help to deliver improvements?

## ***Other Input from Stakeholders***

Identify good practice examples in the RBD?

# SWMI Group Discussions



NS SHARE  
NB & NW IRBDs  
NE RBD

Implementation Working  
Group

Public Authorities  
Forum



Stakeholder & catchment  
forums

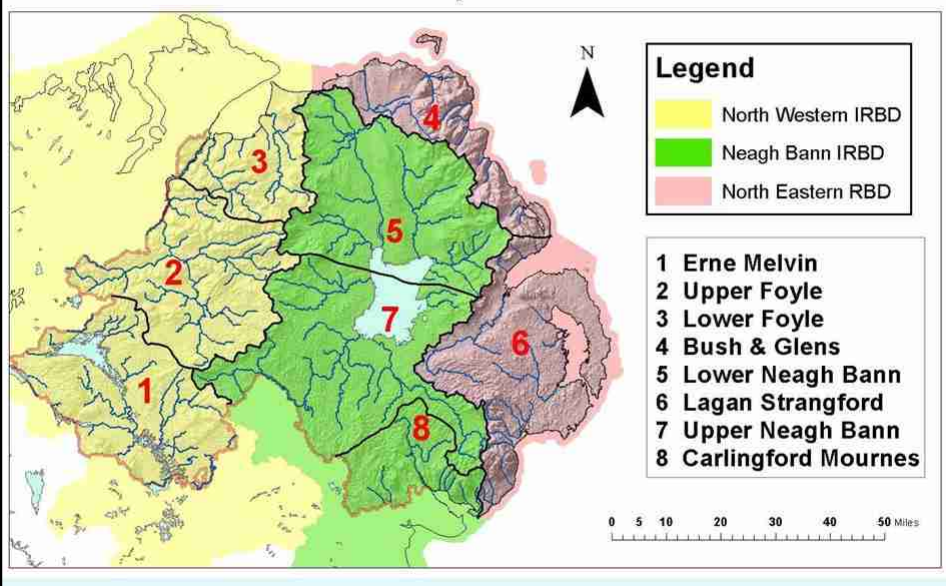
RBD Advisory  
Councils

# SWMI Group Discussions



- NI Stakeholders Workshop Oct 06
- NI Implementation Working Group Jan 07
- NB RDBAC Workshop Jan 07
- NW RBDAC Workshop Feb 07
- PAF Workshop Feb 07

# SWMI Group Discussions



## SWMI Group Discussions



### Water Issues

- **Pollution**
  - Point (eg STW, industry)
  - Diffuse (eg agriculture, septic tanks)
- **Poor use of water**
  - Inefficient use
  - Leakage
  - Over abstraction
  - Contamination of clean water
- **Drainage**
  - Water levels
  - Habitats
- **Non-native species**

### Management Issues

- **Enforcement**
  - Poor planning controls
  - Discharge consents
  - Water Service
- **Communication**
  - Lack of guidance (or lack of awareness of existing guidance)
  - Poor liaison between interested parties
  - Joined-up Government

## SWMI Group Discussions



### NI Stakeholders Feedback – All groups (to date)

- Diffuse pollution – agriculture & un-consented discharges (septic tanks)
- Sewage treatment plant & pumping station discharges
- Planning control – urbanisation, bungalow blight & flood plain development
- Industrial pollution
- Road-runoff
- Protected sites – habitat loss
- Alien species
- Morphology
- Abstraction
- Forestry
- Flooding & climate change

# SWMI Group Discussions



## NI Stakeholders Feedback – All groups (to date)

- Need to raise awareness of the value of water – promote good water use
  - Need for commitment
  - Need for resources
  - Education
  - Communication
- 
- Local issues – oil spills, tourism, border issues - illegal landfills
  - Generally the issues raised were a local manifestation of a national issue
  - Suggested two tier approach – national and local issues and solutions
  - SWMI to accommodate a means for local issues to be identified and addressed at the catchment group level

# North Western RBD



- International RBD
- Area 12,300 km<sup>2</sup>
- 7,400 km<sup>2</sup> within RoI & 4,900 km<sup>2</sup> within NI
- Counties Donegal, Fermanagh, Cavan, Derry, Monaghan, Tyrone, Leitrim, Longford and Sligo

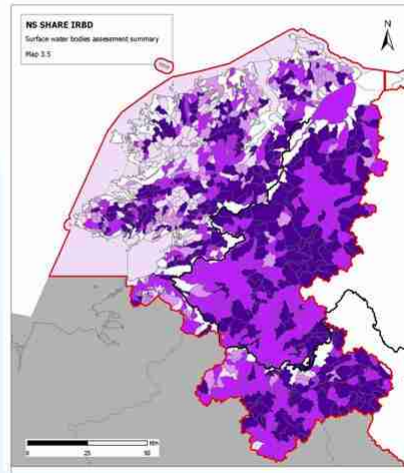
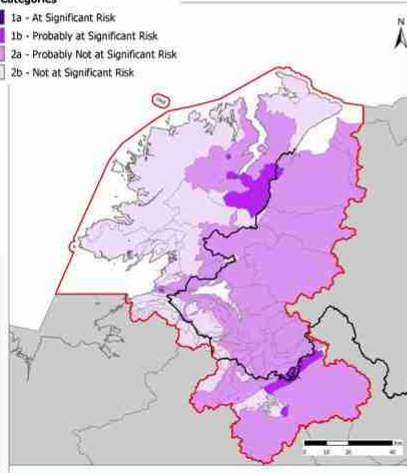


# North Western RBD

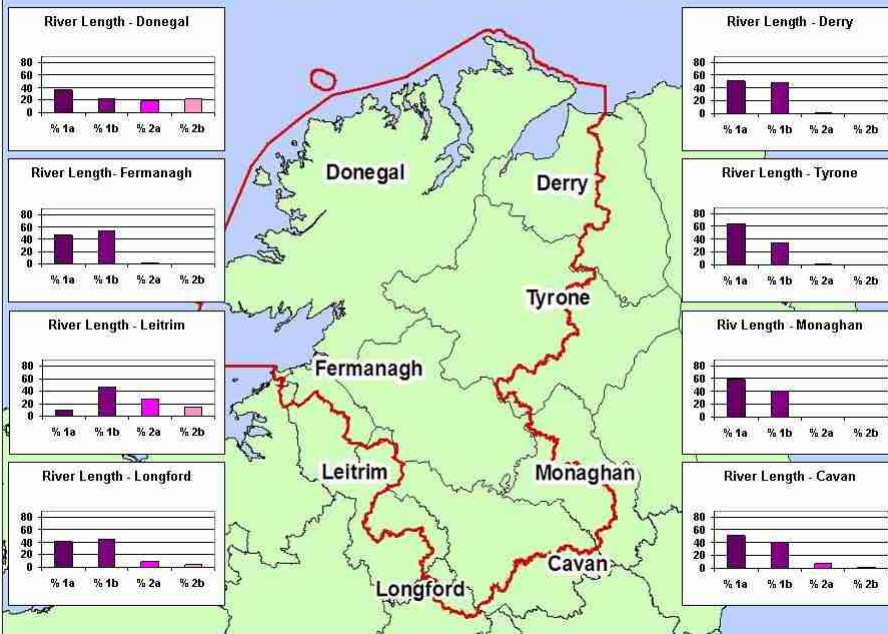


## Risk Categories

- 1a - At Significant Risk
- 1b - Probably at Significant Risk
- 2a - Probably Not at Significant Risk
- 2b - Not at Significant Risk



## NWRBD Counties - Percentage Length of Rivers at Risk



## North Western RBD



### ***Water Issues***

- Planning demand – floodplain infilling – tourism
- Agriculture
- Point discharges – WWTP, industries
- Septic tanks
- Physical changes – channel maintenance, shoreline management
- Abstractions
- Forestry
- Urbanisation – road drainage
- Product usage – bleaches
- Fishery – aquaculture and inland
- Alien species

## North Western RBD



### ***Management Issues***

- Lack of ownership of the problems – local authority level
- Need for joined up development control
- Lack of resources
- Lack of consistency in policies & transparency
- Economics – incentives
- Investment
- Enforcement
- Education & awareness campaigns
- Advisory council/stakeholder proactive awareness role
- Nitrates Regs
- IAE - alternative treatments
- SuDS & river restoration
- Septic tank – certification and levy relief
- Joint reports – shared waters



## North Western RBD

### *Other Input from Stakeholders- good practice*

- Digester technology development
- Sludge treatment – septic tanks
- Septic tank Bye-laws
- CFB – education programmes
- IPPC licensing
- Forestry code of practice
- Holistic fisheries management approach
- Lough Melvin catchment project
- Loughs Agency programmes



## North Western RBD Issues

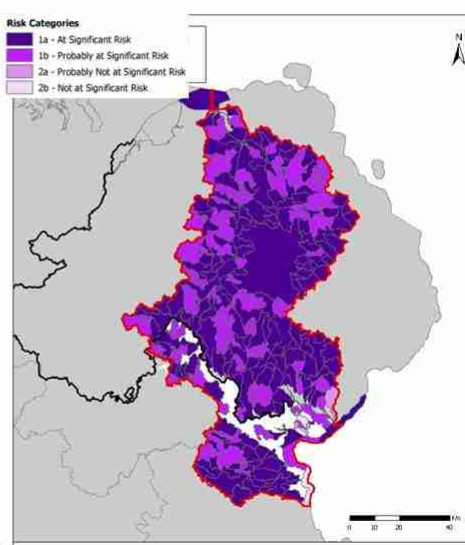
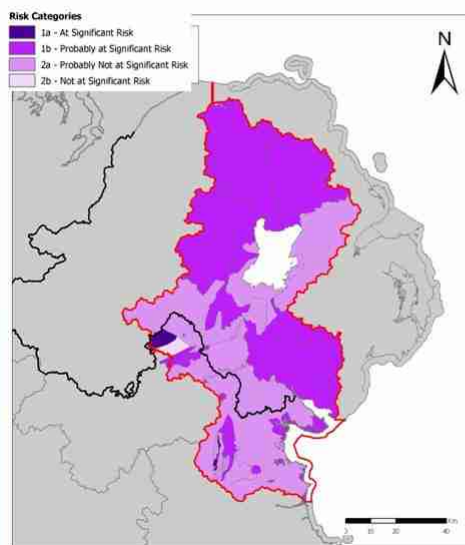
Point Sources	Municipal & industrial discharges – treatment plants, industries, WTP
	Quarries and landfills
Diffuse Sources	Agriculture
	On-site wastewater treatment systems
	Forestry
	Urban areas - Combined sewer overflows, sewer leakage, road drainage
	Usage and discharge of products – P-free detergents
Physical Changes	Direct pressures – channel management, boat movements
	Indirect pressures – floodplain and shoreline development, drainage of wetlands
Abstractions	Water shortages
Other issues	Alien species/biodiversity
	Protection of sensitive areas – aquaculture eg Mulroy Bay
	Shared waters issues
Future Risks	Pressure and climate changes

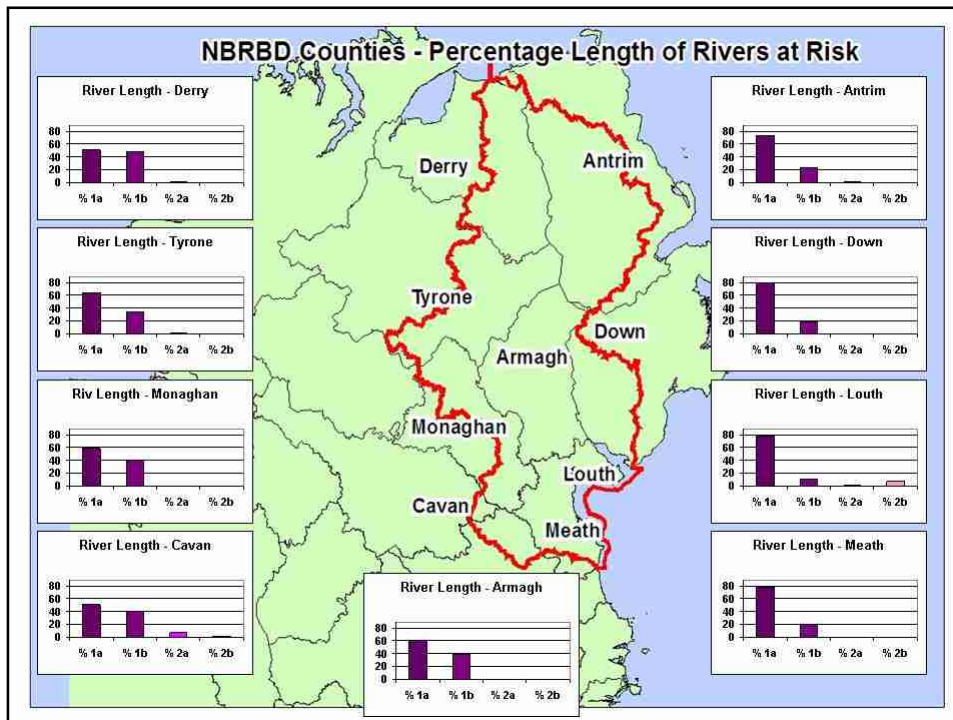
# Neagh Bann RBD

- International RBD
- Area 7,900 km<sup>2</sup>
- 5,740 km<sup>2</sup> within NI & 2,160 km<sup>2</sup> within RoI
- Counties Antrim, Armagh, Louth, Down, Monaghan, Cavan, Londonderry, Meath Tyrone and Fermanagh



# Neagh Bann RBD





## Neagh Bann RBD



### *Water Issues*

- Planning demand and control – infrastructure planning & floodplain demand
- Climate change & flooding
- Agriculture – intensive enterprises (IAE dependence)
- Point discharges – WWTP, industries
- Point discharges – landfills & quarries (illegal dumping)
- Rural housing/septic tanks
- Drainage schemes – channel maintenance
- Abstractions
- Forestry
- Urbanisation – sewer overflows, leakage, road construction
- Product usage – P free detergents
- Invasive species – loss of biodiversity



## Neagh Bann RBD

### *Management Issues*

- Lack of ownership of the problems - watchdog
- Need for joined up development control
- Lack of resources
- Lack of consistency in policies
- Inappropriate licensing
- Economics – incentives & fines
- Enforcement – slow response
- Education & awareness campaigns & communication
- Positive messages – achievable objectives
- Wise water use – businesses, domestic & agricultural usage
- SuDS
- CAP reform & Nitrates Regs – storage
- IAE - alternative treatments
- Reedbeds, willow crops
- Septic tank – certification and levy relief



## Neagh Bann RBD

### *Other Input from Stakeholders- good practice*

- Digester technology development
- Tertiary treatment & plant upgrades – Monaghan
- Small community projects
- Angling group – habitat schemes
- SuDS – Toome By-pass
- Salmon nets removal
- Peace money dividends
- Loughs Agency programmes

## Neagh Bann RBD Issues



Point Sources	Municipal & industrial discharges – treatment plants & industries
	Quarries and landfills
Diffuse Sources	Agriculture – intensive enterprises
	On-site wastewater treatment systems
	Forestry
	Urban areas - road drainage
	Usage and discharge of products – bleaches
Physical Changes	Direct pressures – channel management, boat movements Indirect pressures – floodplain and shoreline development, drainage of wetlands, peatlands
Abstractions	Water shortages
Other issues	Alien species/biodiversity
	Protection of sensitive areas – fisheries & aquaculture eg Dundalk Bay
	Shared waters issues
Future Risks	Pressure and climate changes

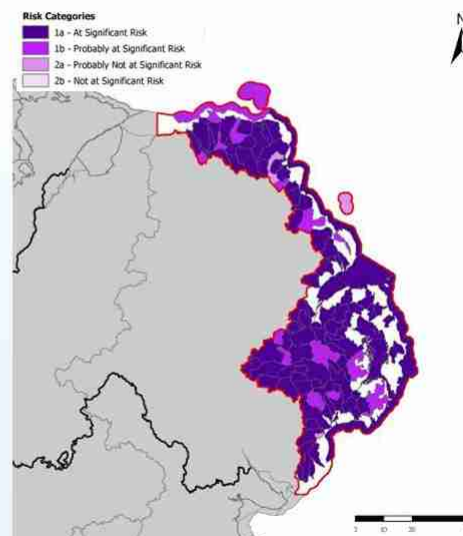
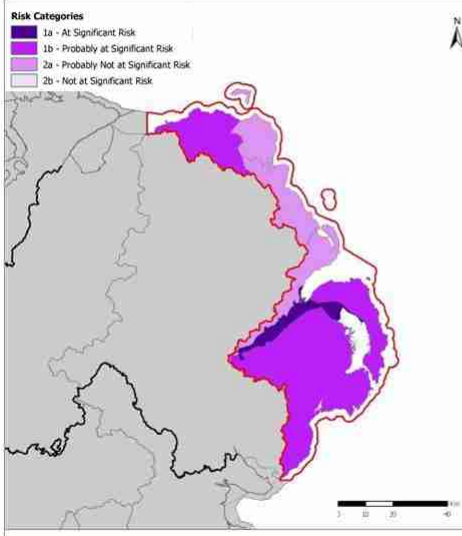
## North Eastern RBD



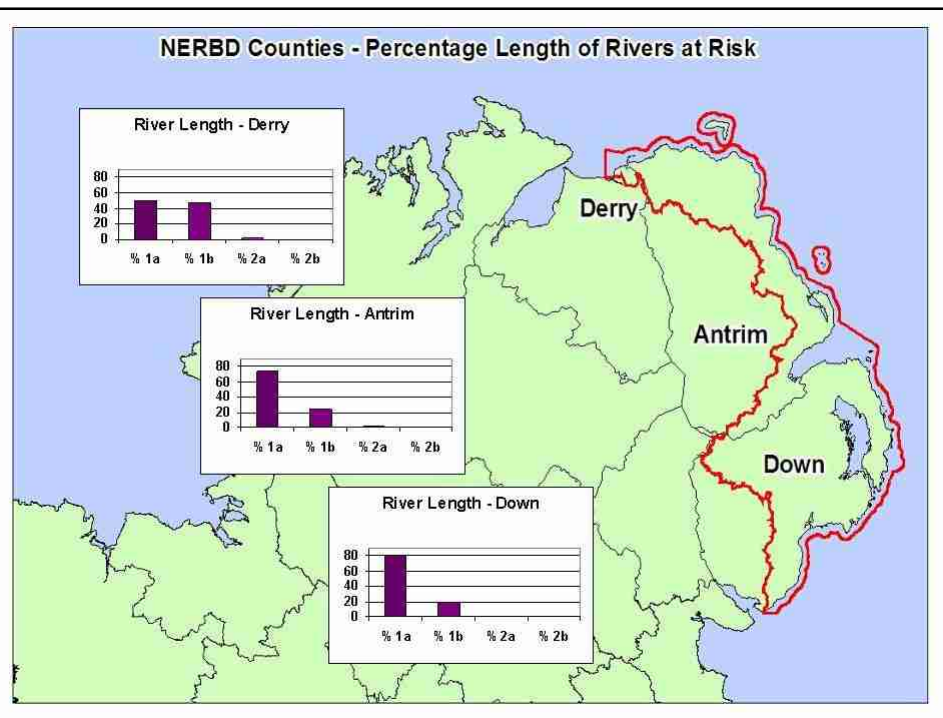
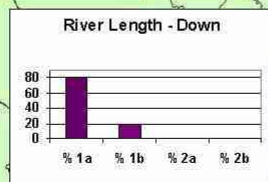
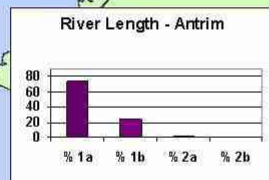
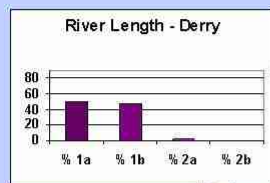
- Area 4,081 km<sup>2</sup>
- Counties Antrim & Down and Derry
- Includes Rathlin Island and the Maiden Islands



# North Eastern RBD



## NERBD Counties - Percentage Length of Rivers at Risk



## North Eastern RBD



### **Water Issues**

- Development
- Agriculture – sheep dips – pesticide disposal
- Sewage works
- Septic tanks
- Illegal/old landfills
- Dangerous substances discharges
- Forestry
- Water abstractions
- Oil spills – road scheme
- Bathing Waters – marine viruses
- Tourism
- Rural dwellings

## North Eastern RBD



### **Management Issues**

- Enforcement – eg discharge consents
- Joined up government – eg planning policies PPS14 and PPS15
- Cross compliance
- Politics & Economics
  - Political funding declaration needed
  - Accountability – developers & their political influence
  - No votes for the environment – political will
- WFD new issues – many EU complaints from groups on the horizon
- Local issues ownership – can the catchment groups become “trusts” dealing with the local issues – needs the right membership & commitment
- Consultee Reservations
  - The key issues are already known – why produce a report
  - Government organisations focus on legislative targets & won't do more than statutory requirements – raising false expectations
  - Will the local issues of interest groups be allowed into the plan
  - Difficulty in getting the public engaged



# North Eastern RBD

*Other Input from Stakeholders- good practice*

- ?

The slide contains a large light blue rectangular area below the text, which appears to be a placeholder for content that is not present.



# North Eastern RBD Issues

Point Sources	Municipal & industrial discharges – treatment plants & industries
	Quarries and landfills
Diffuse Sources	Agriculture – sheep farming
	On-site wastewater treatment systems
	Forestry
	Urban areas - road drainage
	Usage and discharge of products
Physical Changes	Direct pressures – channel management
	Indirect pressures –drainage of wetlands
Abstractions	Water shortages
Other issues	Alien species/biodiversity
	Protection of sensitive areas – fisheries & aquaculture
	Shared waters issues
Future Risks	Pressure and climate changes

## Example Solutions?



- License and consent review
- Substance authorisation review
- Planning legislation restricting activities – eg septic tanks
- Codes of Practice modification or new guidance – eg forestry, river maintenance, agriculture
- Sustainable Drainage Systems
- New regulations – eg river engineering, abstractions
- River and marine restoration schemes
- Emergency response plans
- Monitoring, modelling and studies
- Education and awareness schemes
- Alien species control programmes
- Where appropriate - identification of alternative objectives