

**PROGRAMME AND TIMETABLE  
FOR THE PRODUCTION OF  
RIVER BASIN MANAGEMENT PLANS**

**WATER FRAMEWORK DIRECTIVE**

**15 DECEMBER 2006**



## How to Respond

Comments on this document can be made in writing for up to six months from the date of its publication (15 December 2006 to 15 June 2007). Please ensure that your response reaches us by the closing date. DOE would prefer responses to this consultation to be sent by e-mail to [brenda.cunning@doeni.gov.uk](mailto:brenda.cunning@doeni.gov.uk). Anyone unable to respond by e-mail should post responses to the below address.

Brenda Cunning	Telephone:	(028) 90 547 698
<b>WFD Co-ordination Unit</b>	Fax:	(028) 90 257 300
Environmental Policy Division	Textphone:	(028) 90 540 642
River House	Email:	<a href="mailto:brenda.cunning@doeni.gov.uk">brenda.cunning@doeni.gov.uk</a>
48 High Street		
Belfast		
BT1 2AW		

When responding, please state whether you are responding as an individual or representing the views of an organisation. If you are responding on behalf of a larger organisation, please make it clear who the organisation represents, and where relevant, how members' views were identified. Please identify the section of the document you are commenting on, referring to paragraph numbers where relevant, and highlight the priority of your comment (high, medium or low).

## Further information

Hard-copies of this document are available on request, (please use the above contact address / numbers) and an electronic copy of this document can be found at [www.doeni.gov.uk/index/protect\\_the\\_environment/water](http://www.doeni.gov.uk/index/protect_the_environment/water). Should you require a copy of this document in an alternative format, it can be made available on request in large print, disk, Braille, audio cassette or textphone for the hearing impaired. It may also be made available on request in minority languages for those who are not proficient in English.

## Freedom of Information Act 2000 – Confidentiality of responses

The Department will publish a summary of responses following the closing date for receipt of comments. Your response, and all other responses to this publication, may be disclosed on request. The Department can only refuse to disclose information in exceptional circumstances. Before you submit your response, please read the

paragraphs below on the confidentiality of responses and they will give you guidance on the legal position about any information given by you in response to this publication.

The Freedom of Information Act gives the public a right of access to any information held by a public authority, namely, the Department in this case. This right of access to information includes information provided in response to a consultation. The Department cannot automatically consider as confidential information supplied to it in response to a consultation. However, it does have the responsibility to decide whether any information provided by you in response to this publication, including information about your identity, should be made public or treated as confidential.

This means that information provided by you in response to the publication is unlikely to be treated as confidential, except in very particular circumstances. The Lord Chancellor's Code of Practice on the Freedom of Information Act provides that:

- The Department should only accept information from third parties in confidence if it is necessary to obtain that information in connection with the exercise of any of the Department's functions and it would not otherwise be provided.
- The Department should not agree to hold information received from third parties 'in confidence' which is not confidential in nature.
- Acceptance by the Department of confidentiality provisions must be for good reasons, capable of being justified to the Information Commissioner.

For further information about confidentiality of responses please contact the Information Commissioner's Office (or see the website at: [www.informationcommissioner.gov.uk](http://www.informationcommissioner.gov.uk))

### **What will happen next?**

A summary of responses will be published on the DoE website ([www.doeni.gov.uk/index/protect\\_the\\_environment/water](http://www.doeni.gov.uk/index/protect_the_environment/water)) after the closing date for receipt of comments. Paper copies of this summary will be available on request.

## 1. INTRODUCTION

- 1.1 A new holistic approach to the management of water quality is being established under the *Water Framework Directive* (WFD) which introduces a new system for the **protection and improvement of all aspects of the water environment**, including groundwaters, estuaries, coastal waters, rivers, lakes and loughs, and other wetlands.
- 1.2 The Water Framework Directive (2000/60/EC) was adopted in 2000 by all Member States of the European Union (EU) and established in law in Northern Ireland on 22 December 2003 through [The Water Environment \(WFD\) Regulations \(Northern Ireland\) 2003](#) (SR 2003 No. 544).
- 1.3 The WFD requires that the water environment is managed through an “integrated catchment” approach, to achieve an appropriate level of “biological quality” status in all waterbodies. Biological quality (a general term for the living organisms in the waterbodies) is supported by addressing:
- The **quality of water** – impacts from human activities can affect the quality of our water. Impacts include pollution from industrial and agricultural activities, wastewater from urban areas, or cooling water from power stations and other processes.
  - The **quantity of water** – this may be affected by water being abstracted or drained, or by waterways being physically obstructed.
  - The **physical condition or structure of a waterway**. These can be changed, for example by dredging, by pressures due to intensive land use, or by soil erosion. This can impact on the wildlife supported by the waterway.
- 1.4 Putting this new approach to protecting our water environment into practice is being co-ordinated by the Department of the Environment (DOE) and will require the active involvement of not only the Department’s Environmental Policy Division (EPD) and Environment & Heritage Service (EHS), but also other Government Departments, businesses, rural communities, voluntary bodies and other stakeholders.

1.5 DOE has established two inter-departmental groups (the WFD Implementation Board and the Implementation Working Group) which meet regularly to ensure co-ordinated implementation of the Directive within and between the various Departments and agencies which have joint responsibility for implementation of the Directive in Northern Ireland. The role and involvement of other stakeholder sectors is covered in Section 7 below.

## 2. PURPOSE

2.1 The purpose of this document is to outline the proposed work programme, key deliverables and deadlines, and a statement of the consultation measures to be taken in relation to stakeholders and members of the public as required under Article 14.1.a. of the Water Framework Directive (2000/60/EC).

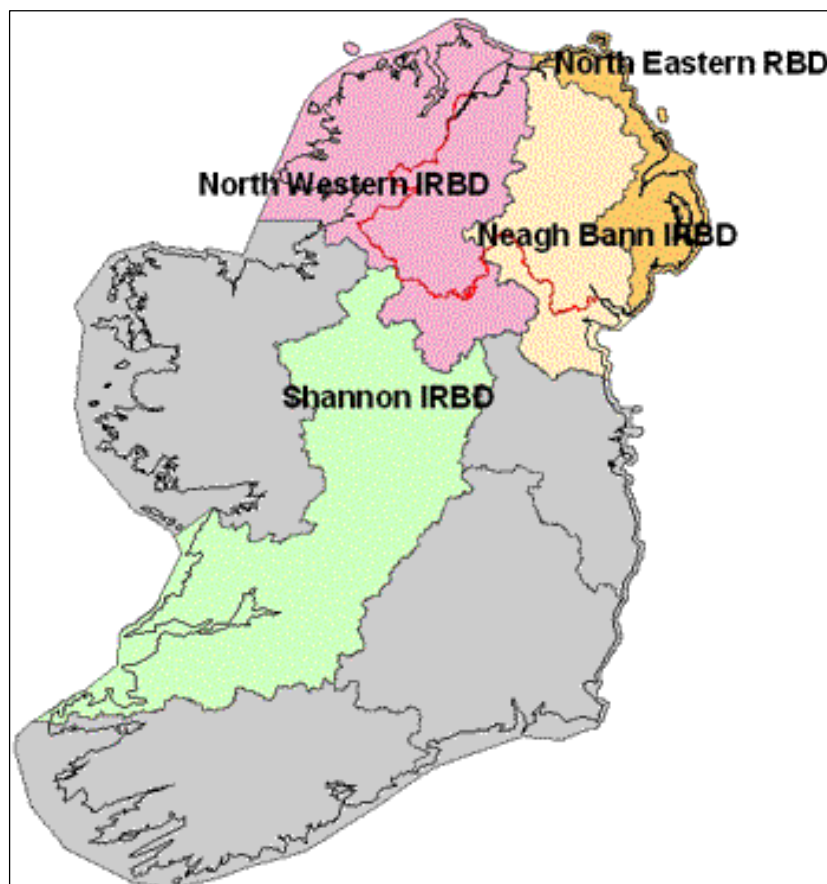
## 3. OBJECTIVES

3.1 The main targets of the WFD are to prevent deterioration of ecological status of surface water bodies and to achieve at least Good Ecological Status (GES) or Good Ecological Potential (GEP) for all surface water bodies by 2015. Similar objectives are included for groundwaters.

3.2 These objectives will be achieved through the implementation of **River Basin Management Plans** (RBMPs). A RBMP is a strategic plan that will provide everyone concerned with a measure of certainty about future water management in that river basin district and set the policy framework within which future regulatory decisions will be made. Once the final versions of Northern Ireland River Basin Management Plans are submitted to the European Commission, an ongoing six year cycle of review, reassessment and revision will commence.

3.3 Participation is key to the identification and management of the various pressures on water bodies. Engagement with stakeholders and the public will for example help to identify the Significant Water Management Issues (SWMI) affecting each individual catchment area. The SWMI reports which will be published for each RBD in June 2007 will form an important part of the draft RBMPs to be published by 2008.

- 3.4 The first RBMP of the 6 yearly river basin planning cycle must be published in 2009 and must include **objectives** (to be attained by 2015, 2021 or 2027) for all water bodies in that river basin district and the measures proposed to achieve them.
- 3.5 Northern Ireland has 4 **River Basin Districts**, each of which will require a RBMP: North Western, North Eastern, Neagh Bann and Shannon. Three of these are cross-border International River Basin Districts (IRBDs), shared with the Republic of Ireland. Only the North-Eastern RBD is completely contained within Northern Ireland.



**Figure 1. River Basin Districts, Northern Ireland**

- 3.6 The required contents of a river basin management plan are set out in an annex to the Water Framework Directive and have been summarised at Appendix 1 for convenience.

#### 4. HARMONISATION WITHIN IRBDs

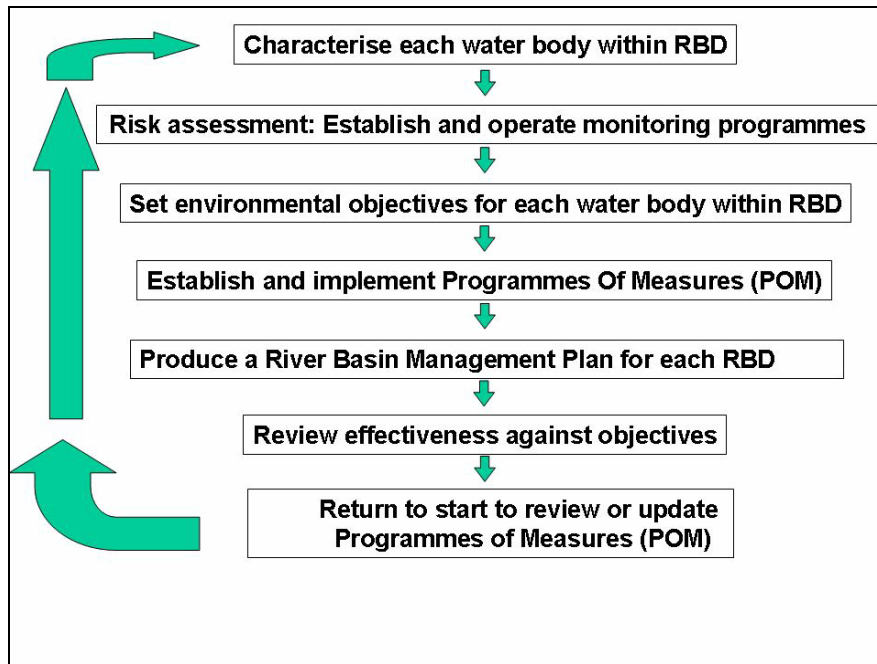
- 4.1 The WFD requires Northern Ireland to harmonise plans for the three cross-border IRBDs with competent authorities in the Republic of Ireland. To help facilitate this, DOE in Northern Ireland and the Department of Environment, Heritage and Local Government (DEHLG) in RoI have established a North South Water Framework Directive Coordination Group which also includes officials from the environment agencies in both jurisdictions and the relevant lead County Councils from RoI. The Group is supported by the North South Technical Advisory Group on the WFD (NS TAG). Further information on cross border implementation of the Directive can be found in the joint publication “Managing our Shared waters” published in 2003 ([http://www.ehsni.gov.uk/waters\\_inside.pdf](http://www.ehsni.gov.uk/waters_inside.pdf)).
- 4.2 The Departments have also jointly supported the establishment of a cross border project, **N**orth **S**outh **S**hared **A**quatic **R**esource or NS SHARE ([www.nsshare.com](http://www.nsshare.com)). NS SHARE is partially funded through the EU’s INTERREG 3A Programme and is managed by Donegal County Council on behalf of all the project partners. The project is making a significant contribution to harmonisation of the technical implementation of the WFD in the INTERREG area which includes all of NI and 6 border counties in RoI.

#### 5. WORKING WITHIN EUROPE

- 5.1 The UK and Ireland are also closely involved with work being undertaken in Europe under the banner of the Common Implementation Strategy (CIS), and in technical work - “intercalibration”- which will set the boundaries of Good Ecological Status by mid-2007. A series of EU wide projects have been undertaken to support and ensure consistent understanding of GES and to ensure, as far as possible, coherent and harmonious implementation of the Directive across Europe.
- 5.2 Most of the challenges and difficulties arising will be common to many Member States as many of the European river basins are shared, crossing administrative and territorial borders. A common understanding and approach is crucial to successful and effective implementation.

## 6. RIVER BASIN MANAGEMENT PLANNING CYCLE

6.1 There are a number of steps involved in producing a management plan for each River Basin District. Once the plans have been constructed and are operational they must be reviewed and updated at least once every 6 years. Figure 2 illustrates in flowchart form the sequence of activities that form this river basin management planning cycle.



**Figure 2: Steps in RBMP Planning Cycle**

## 7. CONSULTATION PROCESS

7.1 Publication of this document is part of the wider process of engagement in the development of the Department's approach towards river basin planning. A short list of references and links to useful websites is included at Appendix 2.

7.2 It is important that everyone who may be affected has the opportunity to contribute to the development of RBMPs and influence the prioritisation of measures and work programmes, to ensure that Northern Ireland meets the agreed targets of the WFD. Stakeholder and public participation has a crucial role in the WFD planning cycle.

7.3 Following stakeholder meetings in 2004 and 2005, DOE established a WFD Stakeholder Forum of invited representatives from non-governmental organisations

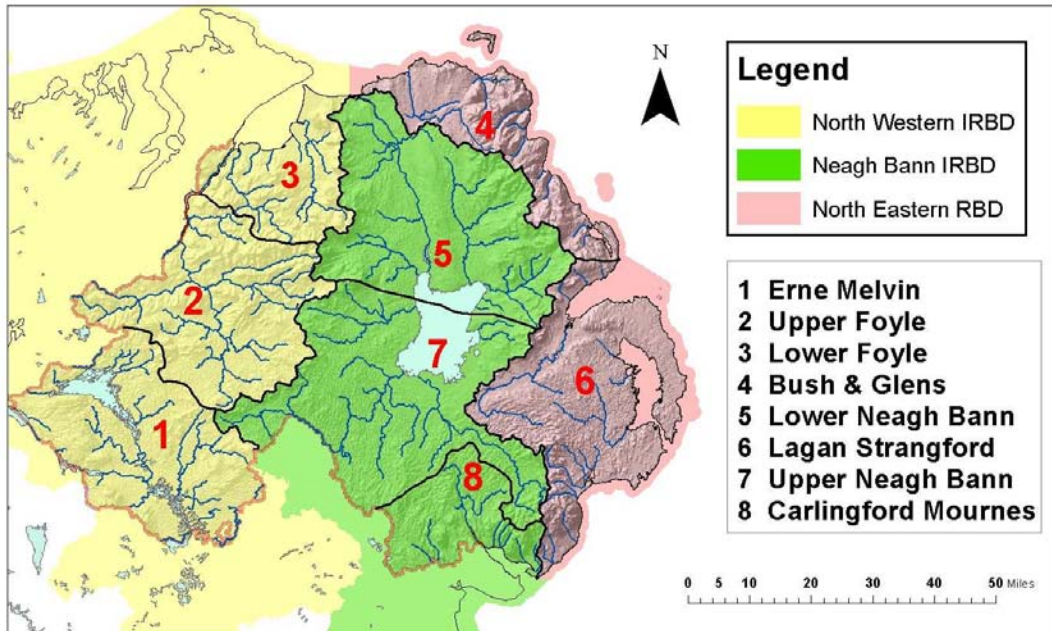
to advise on implementation of WFD in NI. DOE will, for the foreseeable future, also support an annual event for all stakeholders. Led by EHS, DOE will also facilitate engagement at a local level so that everyone has a convenient opportunity to participate in the river basin planning process. Participation will be sought across a wide range of interested parties such as:

- Local communities
- Land managers
- Agriculture and aquaculture
- River users
- Academic institutions
- Industry
- Public Utility Providers (water, power, waste etc.)
- Non-Government Organisations (NGOs).
- Representative organisations
- Interested individuals

7.4 Although there are already some locally focused groups, outputs from stakeholder workshops have supported the EHS plan to create approximately eight catchment based units within Northern Ireland. These will be known as Catchment Stakeholder Groups (CSGs). It is intended that the creation of these groups will enable improved local level participation both in the day to day business of protecting the status of our water bodies and in the longer term implementation of WFD. The proposed catchment stakeholder groups are tabulated below and illustrated in figure 3.

<b>River Basin District</b>	<b>Catchment Group</b>
Neagh Bann	Upper Neagh Bann Lower Neagh Bann Carlingford – Mournes
North Eastern	Bush and Glens Lagan – Strangford
North Western	Erne – Melvin Upper Foyle Lower Foyle

**Table 1. Proposed NI Stakeholder Catchment Groups**



**Figure 3. Location of Proposed Catchment Stakeholder Groups (CSGs).**  
**(NB: Group titles and boundaries may be subject to change)**

7.5 EHS will support regular local Northern Ireland Catchment Stakeholder Group (CSG) meetings in each of these areas. It is possible that some pre-existing, Department sponsored committees will be able to modify their business remits to accommodate WFD requirements, thus avoiding the creation of unnecessary additional committee structures. **The aim is that interested parties from all areas of NI, including those who are interested in the management of coastal waters, will have a Catchment Group within which to express their views.** These groups will be established on a rolling basis until all are in place by July 2007.

## 8. PROPOSED TIMETABLE

8.1 There are deadlines for key activities to enable implementation of the Water Framework Directive and the production of RBMPs. Some of these are given in the table below, although there are many more interim deliverables:

<b>KEY ACTIVITY</b>	<b>DEADLINE</b>
Publication of Work Programme and Timetable to establish RBMPs (Article 14) i.e. this document	Dec 2006
Environmental monitoring programmes in place	Dec 2006
Interim progress report on monitoring to European Commission	Mar 2007
Consultation on proposals for Environmental Quality Standards and conditions	June 2007
Publication of Significant Water Management Issues (SWMI) Reports	June 2007
Publication of draft RBMPs	Dec 2008
RBMPs finalised and published	Dec 2009
Submission of RBMPs to European Commission	Mar 2010
All measures operational	Dec 2012

**Table 2. Timetable for implementation of key deliverables and milestones**

## 9. KEY DELIVERABLES OF THE DIRECTIVE

- 9.1 Publication of Work Programme and Timetable for producing the first RBMPs – This document is intended to summarise and clarify for public consultation, the key deadlines and consultation measures required to create the River Basin Management Plans for Northern Ireland. Published in December 2006, it will be followed by a 6 month period during which comments may be made in writing (ending in June 2007).
- 9.2 Environmental monitoring programmes – EHS is currently undertaking a review of its existing monitoring programmes to ensure they meet WFD requirements. It will ensure the establishment of monitoring programmes covering, for instance, flow rates, volumes, levels, and the ecological status of surface waters, in addition to monitoring the chemical status of groundwaters. This programme of monitoring will be designed and operational by 22 December 2006.
- 9.3 Summary report on monitoring programmes – The Directive requires that Member States submit a summary report of the monitoring programmes designed for each

river basin management plan. The first of these has to be reported to the Commission in March 2007.

- 9.4 Environmental quality standards for priority substances – The UK is developing environmental standards (for oxygen, nutrients, light conditions etc.) that support the biology (living organisms) within water bodies. These will enable the review of regulatory standards for discharges to the water environment where necessary with a view to delivering good status.
- 9.5 The setting of environmental standards includes the setting of environmental quality standards (EQSs) for specific pollutants. This is partly being fulfilled within the current programme of standard setting for the UK. An expert group has been set up for Northern Ireland, including representatives from other departments e.g. Department of Agriculture and Rural Development (DARD), Department for Regional Development (DRD) (including Water Service), to identify and prioritise the most harmful specific pollutants for Northern Ireland. These substances will then be considered within a wider UK programme of EQS development.
- 9.6 Classification Schemes for all Water Bodies – The WFD requires Member States to develop environmental objectives with the aim of meeting good status by 2015. Good status is defined by a ‘classification scheme’ outlined in the Directive. EHS is currently working through the UK Technical Advisory Group (UKTAG), NSTAG and the NS SHARE Project to deliver suitable classification schemes for WFD.
- 9.7 Significant Water Management Issues (SWMI) report – The Directive requires that an interim report on significant water management issues (SWMI) for each River Basin District (RBD) is produced by December 2007. The report will be a key element leading to the subsequent production of the River Basin Management Plans (RBMPs). A core format for the report has been devised for use across the UK and Ireland. It will identify the significant water quality issues in each RBD, the likely management measures that will be used to control them and possible combinations of measures that may be employed. Through engagement with stakeholders, local priorities will also be identified.
- 9.8 To help ensure harmonisation at future stages of the implementation process, a joint SWMI report will be produced for each IRBD shared by Northern Ireland and

the RoI by 22 June 2007 – six months before the stipulated deadline. This will allow the outcomes identified on the SWMI report to feed more effectively into the draft RBMP process which follows.

- 9.9 Draft RBMPs – Draft RBMPs must be published by late December 2008, and followed by a period of six months during which comments may be made in writing. On request, access shall be given to the background documents and information used for the development of the draft RBMPs.
- 9.10 Transmission of RBMPs to the European Commission (EC) – The final version of RBMPs for Northern Ireland including the NI portions of the River Basin Districts shared with the Republic of Ireland must be submitted to the EC within 3 months of their publication. The competent authorities in both jurisdictions must ensure that the cross-border RBMPs are submitted to the EC at the same time.
- 9.11 The Programme of Measures (POMs) – The measures to be taken in RBDs must be outlined in the RBMPs and become operational by 2012. An interim report on the progress of implementation for these plans must also be submitted at this time. If an RBMP is to be updated then the RBD management cycle and public consultation process must be repeated.

## 10. NEXT STEPS

10.1 DOE will seek public and stakeholder engagement on the following:

- on this document, the timetable and work programme for the development of RBMPs;
- SWMI report due for publication by June 2007;
- the draft RBMPs, due to be consulted upon from December 2008.

DOE will accomplish this through holding regular Stakeholder Forum meetings and specific stakeholder events, working with catchment stakeholder groups, and issuing WFD documents for public comment.

Stakeholders can expect additional engagement on a range of specific issues (e.g. environmental standards, flood control), through DoE or other Departments.

10.2 Comments on the above documents (including this one) will be accepted for a period of six months following publication. The publications will be advertised via:

- Local press advertisements
- Northern Ireland Stakeholder Forum and Catchment Stakeholder Group (CSG) meetings .
- Websites:
  - DOE [www.doeni.gov.uk](http://www.doeni.gov.uk)
  - EHS [www.ehsni.gov.uk/environment/waterManage/wfd/wfd.shtml](http://www.ehsni.gov.uk/environment/waterManage/wfd/wfd.shtml)
  - NS SHARE [www.nsshare.com](http://www.nsshare.com)
- Other public participation and advertising opportunities.
- Other possible suggestions from stakeholders in response to this document.

10.3 When commenting on this document, please refer to specific numbered paragraphs, where possible, and highlight the priority of each comment (high, medium, low). DOE would prefer responses to this consultation to be sent by E-mail to [brenda.cunning@doeni.gov.uk](mailto:brenda.cunning@doeni.gov.uk). Anyone unable to respond by e-mail should post responses to the below address.

10.4 Comments should be returned by **15 June 2007**.

**Brenda Cunning  
WFD Co-ordination Unit  
Environmental Policy Division  
River House  
48 High Street  
Belfast.  
BT1 2AW**

**Email:** [brenda.cunning@doeni.gov.uk](mailto:brenda.cunning@doeni.gov.uk)

**Tel:** (028) 90 547 698

**Fax:** (028) 90 257 300

**Textphone:** (028) 90 540 642

**Requirements for River Basin Management Plan**

Required content (WFD Annex VII)	Progress / Actions pending
<p><b>A1. General description of the characteristics of the RBD</b></p> <p>For surface waters:</p> <ul style="list-style-type: none"> <li>• mapping of location and boundaries of water bodies</li> <li>• mapping of ecoregions and surface water body types within the river basin</li> <li>• identification of reference conditions for the surface water types</li> </ul> <p>For groundwaters:</p> <ul style="list-style-type: none"> <li>• mapping of location and boundaries of groundwater bodies</li> </ul>	<p>Largely complete and published through the Water Framework Directive Article 5 report to the European Commission in 2005.  <a href="http://www.ehsni.gov.uk/water/wfd.htm">http://www.ehsni.gov.uk/water/wfd.htm</a></p> <p>Ongoing studies are refining the information through the process of “further characterisation”.</p>
<p><b>A2. Summary of significant pressures and impact of human activity on status of surface water and groundwater, including:</b></p> <ul style="list-style-type: none"> <li>• estimation of point source pollution</li> <li>• estimation of diffuse source pollution, including a summary of land use</li> <li>• estimation of pressures on the quantitative status of water including abstractions</li> <li>• analysis of other impacts of human activity on the status of water</li> </ul>	<p>Initial analyses were published through the “Article 5” report in 2005. Further refinements will be contained within the SWMI reports in June 2007.</p>
<p><b>A3. Identification and mapping of protected areas</b></p>	<p>Completed within the “Article 5” report of 2005 and published within the Register of Protected Areas.</p>
<p><b>A4. Map of monitoring networks and map presentation of the results of monitoring programme for the status of:</b></p> <ul style="list-style-type: none"> <li>• surface water (ecological and chemical)</li> <li>• groundwater (chemical and quantitative)</li> <li>• protected areas</li> </ul>	<p>The EHS published a monitoring strategy in June 2006 (available at the EHS website: <a href="http://www.ehsni.gov.uk">www.ehsni.gov.uk</a>) and a revised monitoring programme will be in place by 22 December 2006.</p> <p>The maps and presentations required by the WFD will be coordinated by EHS and delivered through collaborative programmes involving</p>

Required content (WFD Annex VII)	Progress / Actions pending
	several Departments and Agencies.
<p><b>A5. List of environmental objectives for surface waters, groundwaters and protected areas, including identification of use of:</b></p> <ul style="list-style-type: none"> <li>• deadline extensions</li> <li>• less stringent objectives</li> <li>• temporary deterioration</li> <li>• failure to achieve good status, or to prevent deterioration due to new modifications or new activities of overriding public interest</li> </ul>	<p>Ongoing work to develop classification schemes, to refine economic analysis tools and to set detailed objectives for all water bodies.</p> <p>Proposed environmental standards will be published as set out in table 2. Following stakeholder consultation, these components will be incorporated into the draft River Basin Management Plans which will be published for consultation in 2008.</p>
<p><b>A6. Summary of economic analysis of water use</b></p>	<p>Initial analyses were published in the “Article 5” report and these will be updated for the draft RBMPs in 2008.</p>
<p><b>A7. Summary of the programme of measures linked to environmental objectives</b></p> <ul style="list-style-type: none"> <li>• summary of measures required to implement Community legislation for the protection of water (Nitrates, IPPC, UWWT etc.)</li> <li>• report on the practical steps and measures taken to apply principle of recovery of costs of water services.</li> <li>• summary of measures in connection with bodies of water used for the abstraction of drinking water</li> <li>• summary of the controls on abstraction and impoundment of water, including reference to registers and exemptions made</li> <li>• summary of the controls adopted for point source discharges and other activities (including those impacting hydromorphological conditions)</li> <li>• identification of authorised direct discharges to groundwater</li> <li>• summary of measures taken in</li> </ul>	<p>Extensive water management and related measures are already being delivered by relevant Departments (DOE, DARD, DCAL, DRD) and their various statutory agencies, including several cross border bodies.</p> <p>New measures are under consideration or being introduced (including abstraction control by DOE, and fishery management arrangements in Lough Foyle and Carlingford Lough by DCAL).</p> <p>Co-ordination is effected through the WFD Interdepartmental Implementation Working Group led by EHS.</p>

Required content (WFD Annex VII)	Progress / Actions pending
<p>connection with priority substances</p> <ul style="list-style-type: none"> <li>• summary of measures taken to prevent or reduce impact of accidental pollution incidents</li> <li>• summary of measures taken for water bodies which are unlikely to achieve the required environmental objectives</li> <li>• details of supplementary measures</li> <li>• details of measures taken to avoid increase in pollution of marine waters</li> </ul>	
<p><b>A8. Register of any more detailed programmes and management plans for the RBD, including a contents summary</b></p>	<p>The Department will coordinate this as part of the river basin planning process. To be completed as a draft for consultation by 2008.</p>
<p><b>A9. Summary of the public information and consultation measures taken, their results and changes to the plan made as a consequence</b></p>	<p>The Department will compile this, summarising items such as responses received on WFD publications, feedback from stakeholder meetings, consultations etc.</p>
<p><b>A10. List of competent authorities</b></p>	<p>The Department of the Environment was identified as the competent authority for the purposes of the "Article 3 report". However, the WFD Regulations of 2003 place duties upon DOE, DCAL, DARD and DRD.</p>
<p><b>A11. Contact points and procedures for obtaining background documentation and information:</b></p> <ul style="list-style-type: none"> <li>• timetable and work programme for the production of RBMP (including statement of consultation measures)</li> <li>• interim overview of significant water management issues</li> <li>• draft river basin management plan</li> <li>• details of control measures for point source discharges and impacts on hydromorphological conditions</li> <li>• monitoring data gathered.</li> </ul>	<p>DOE's Environmental Policy Division and EHS will ensure that the required background documentation and information is available for each stage of the process.</p>

**REFERENCES AND USEFUL LINKS - MANY OF THESE WEBSITES CONTAIN LINKS TO OTHER SOURCES OF INFORMATION.**

**Northern Ireland**

- ENVIRONMENT AND HERITAGE SERVICE, WFD HOMEPAGE:  
<http://www.ehsni.gov.uk/environment/waterManage/wfd/wfd.shtml>
- DEPARTMENT OF ENVIRONMENT, WFD HOMEPAGE:  
[http://www.doeni.gov.uk/index/protect\\_the\\_environment/water/water\\_framework\\_directive\\_.htm](http://www.doeni.gov.uk/index/protect_the_environment/water/water_framework_directive_.htm)
- SCOTLAND AND NORTHERN IRELAND FORUM FOR ENVIRONMENTAL RESEARCH (SNIFFER): <http://www.sniffer.org.uk/>
- UK TECHNICAL ADVISORY GROUP (UKTAG): <http://www.wfduk.org>
- NI AND CROSS-BORDER RIVER BASIN DISTRICTS (WEBSITES MANAGED BY THE NORTH SOUTH SHARE PROJECT): <http://nsshare.com>
  - North Western IRBD <http://www.nwirbd.com>
  - Neagh Bann IRBD <http://www.nbirbd.com>
  - Shannon IRBD <http://www.shannonrbd.com>
  - North Eastern RBD <http://www.nerbd.com>
- NI ENVIRONMENTAL POLICY DIVISION JOINT CONSULTATION DOCUMENT ON IMPLEMENTATION OF THE WATER FRAMEWORK DIRECTIVE IN NORTHERN IRELAND "MANAGING OUR SHARED WATERS" [http://www.ehsni.gov.uk/waters\\_inside.pdf](http://www.ehsni.gov.uk/waters_inside.pdf)
- NORTHERN IRELAND WATER LEGISLATION (NETREGS WEBSITE):  
<http://www.netregs.gov.uk>

**Republic of Ireland**

- WATER FRAMEWORK DIRECTIVE, REPUBLIC OF IRELAND: <http://www.wfdireland.ie/>

**Explanation and background to technical terms used in the Water Framework Directive:**

- A USEFUL GLOSSARY OF TERMS USED IN THE WFD CAN BE FOUND ON THE EHS WEBSITE:  
<http://www.ehsni.gov.uk/environment/waterManage/wfd/wfd.shtml>
- THE FOUNDATION FOR WATER RESEARCH (FWR) IS A UK "NOT FOR PROFIT" ORGANISATION WHICH PROVIDES A INDEPENDENT SOURCE OF INFORMATION AT THE WATER FRAMEWORK DIRECTIVE INFORMATION CENTRE:  
<http://www.euwfd.com>